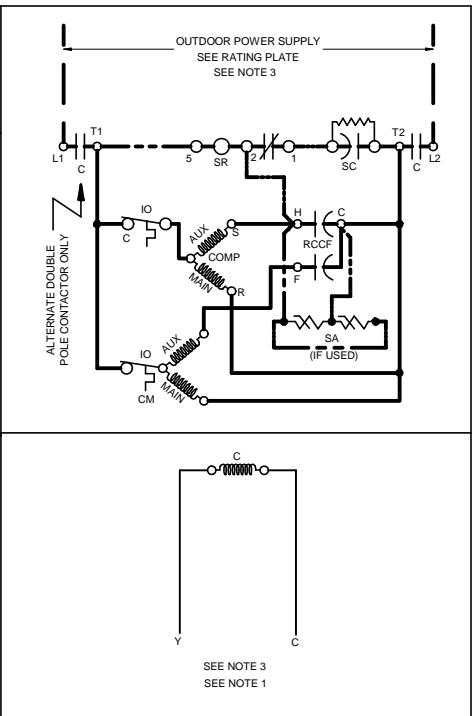


COLOR CODE
 BK ----- BLACK
 BL ----- BLUE
 BR ----- BROWN
 OR ----- ORANGE
 PU ----- PURPLE
 RD ----- RED
 WH ----- WHITE
 YL ----- YELLOW

WIRING CODE
FACTORY WIRING
 HIGH VOLTAGE —————
 LOW VOLTAGE —————
 OPTIONAL HIGH VOLTAGE - - - - -
FIELD WIRING
 HIGH VOLTAGE - - - - -

COMPONENT CODE
 C ----- CONTACTOR
 CM ----- OUTDOOR FAN MOTOR
 COMP ----- COMPRESSOR
 IO ----- INTERNAL OVERLOAD
 LVJB ----- LOW VOLTAGE JUNCTION BOX
 RCCF ----- RUN CAPACITOR FOR COMPRESSOR & FAN
 SA ----- START ASSIST
 SC ----- START CAPACITOR FOR COMPRESSOR (OPTIONAL)
 SR ----- START RELAY FOR COMPRESSOR (OPTIONAL)

CONTROLS SHOWN WITH THERMOSTAT IN 'OFF' POSITION.



NOTES:
 1) TO INDOOR UNIT LOW VOLTAGE TERMINAL BLOCK & INDOOR THERMOSTAT USE N.E.C. CLASS 2 WIRE.
 2) START ASSIST FACTORY EQUIPPED WHEN REQUIRED.
 3) USE COPPER CONDUCTORS ONLY.



0140R00602-A