

Drain Pan Metal Reinforcement Kit Installation Instructions

THIS KIT INSTRUCTION NOT INCLUDED WITH DPKT KITS, USE FOR REFERENCE ONLY. STEPS 6 THROUGH 10 DO NOT APPLY AS THE METAL REINFORCEMENT IS FACTORY INSTALLED ON THE DRAIN PAN.

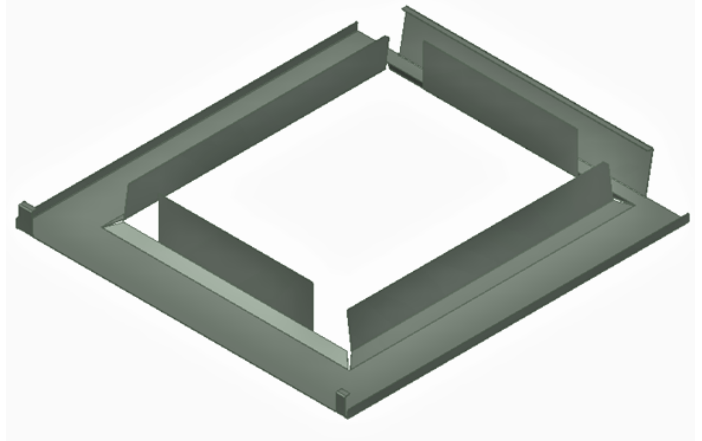
SAFETY CONSIDERATIONS

The following symbols and labels are used throughout this manual to indicate immediate or potential safety hazards. It is the owner's and installer's responsibility to read and comply with all safety information and instructions accompanying these symbols. Failure to heed safety information increases the risk of personal injury, property damage, and/or product damage.



WARNING

ONLY PERSONNEL THAT HAVE BEEN TRAINED TO INSTALL, ADJUST, SERVICE OR REPAIR (HEREINAFTER, "SERVICE") THE EQUIPMENT SPECIFIED IN THIS MANUAL SHOULD SERVICE THE EQUIPMENT. THE MANUFACTURER WILL NOT BE RESPONSIBLE FOR ANY INJURY OR PROPERTY DAMAGE ARISING FROM IMPROPER SERVICE OR SERVICE PROCEDURES. IF YOU SERVICE THIS UNIT, YOU ASSUME RESPONSIBILITY FOR ANY INJURY OR PROPERTY DAMAGE WHICH MAY RESULT. IN ADDITION, IN JURISDICTIONS THAT REQUIRE ONE OR MORE LICENSES TO SERVICE THE EQUIPMENT SPECIFIED IN THIS MANUAL, ONLY LICENSED PERSONNEL SHOULD SERVICE THE EQUIPMENT. IMPROPER INSTALLATION, ADJUSTMENT, SERVICING OR REPAIR OF THE EQUIPMENT SPECIFIED IN THIS MANUAL, OR ATTEMPTING TO INSTALL, ADJUST, SERVICE OR REPAIR THE EQUIPMENT SPECIFIED IN THIS MANUAL WITHOUT PROPER TRAINING MAY RESULT IN PRODUCT DAMAGE, PROPERTY DAMAGE, PERSONAL INJURY OR DEATH.



WARNING

DO NOT USE ANY PARTS THAT ARE NOT DESIGN CERTIFIED BY THE MANUFACTURER FOR USE WITH THIS UNIT. SERIOUS PROPERTY DAMAGE, PERSONAL INJURY, REDUCED UNIT PERFORMANCE AND/OR HAZARDOUS CONDITIONS MAY RESULT FROM THE USE OF SUCH NON-APPROVED PARTS.



CAUTION

WHEN INSTALLING OR SERVICING THIS EQUIPMENT, SAFETY CLOTHING, INCLUDING HAND AND EYE PROTECTION, IS STRONGLY RECOMMENDED. IF INSTALLING IN AN AREA THAT HAS SPECIAL REQUIREMENTS (HARD HATS, ETC) OBSERVE THESE REQUIREMENTS.



KIT CONTENTS

Coil Series	Cabinet size	Description	P/N	Qty
CAPF/CAUF/CAPT /CAPE/CXTQ SERIES	A	Drain Pan Metal Reinforcement	0121D01009	1
		FRPP Drain Pan	BT5076500DF	1
	B	Drain Pan Metal Reinforcement	0121D01010	1
		FRPP Drain Pan	BT5076501DF	1
	C	Drain Pan Metal Reinforcement	0121D01051	1
		FRPP Drain Pan	BT5076502DF	1
	D	Drain Pan Metal Reinforcement	0121D01012	1
		FRPP Drain Pan	0161D00089	1

CAPF/CAUF/CAPT/CAPE/ CXTQ SERIES

Note: The Drain Pan Metal Reinforcement is to be applied on Upflow orientation. This will require removal off evaporator coil from cabinet. Recover the refrigerant and un-braze the suction line from the ID unit in accordance with applicable installation/service instructions.

1. Remove all screws on the two door access panel to unhinge panel doors from the cabinet.
2. To slide the coil out of the cabinet, make sure to remove both screws indicate by Figure 1.
3. Remove and discard foam gasket off the drain pan.
4. Remove the two screws in the front of the coil/pan assembly that attach the two pieces together where the pan meets the coil. See Figure 2.
5. After performing step 4, remove the similar two screws in the rear of the coil/pan assembly that attach two pieces together where the pan meets the coil.

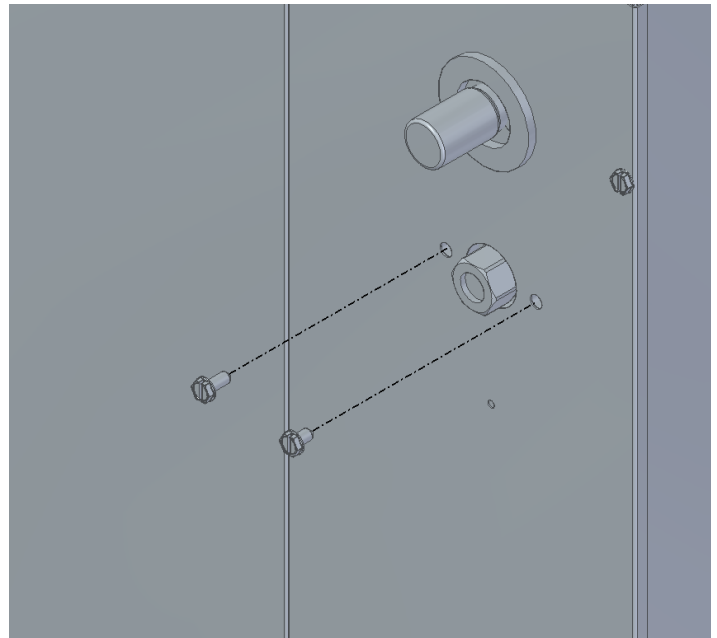


FIGURE 1

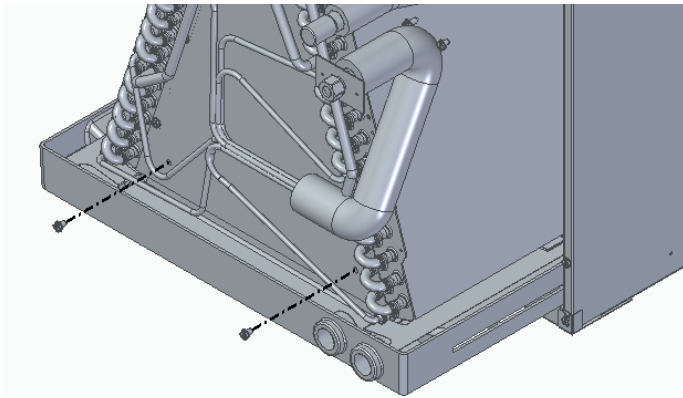


FIGURE 2

6. Place the Drain Pan Metal Reinforcement on a flat surface.

Note: The Drain Pan Metal Reinforcement can be installed without separating the evaporator coil and drain pan. Best practice is to install the metal reinforcement with drain pan only.

7. To install the drain pan metal reinforcement, lift your drain pan upwards and tilt it upwards 30-45 degree range as shown in Figure 3. Inserting the drain pan underneath the Drain Pan Metal Reinforcement lip.

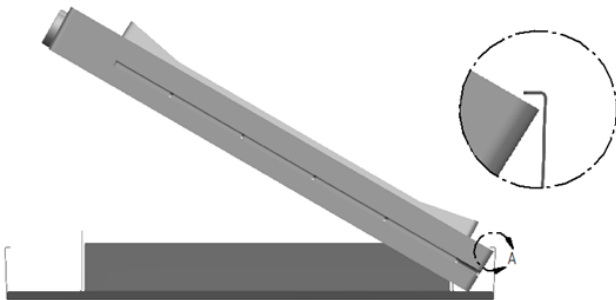


FIGURE 3

8. Pressing the back end of drain pan against the metal reinforcement drop it straight down. Drain pan will drop on top of the drain pan metal reinforcement tabs, Pull the front tabs of drain pan metal reinforcement out till the pan drops flat on top of the drain pan metal reinforcement.
9. Press the front tabs of drain pan metal reinforcement inwards in as shown in Figure 4.
10. To secure the metal reinforcement make sure to press the tabs inwards over the drain pan lip.

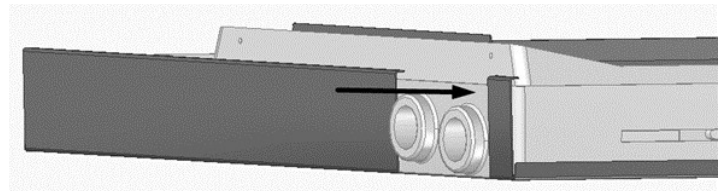


FIGURE 4

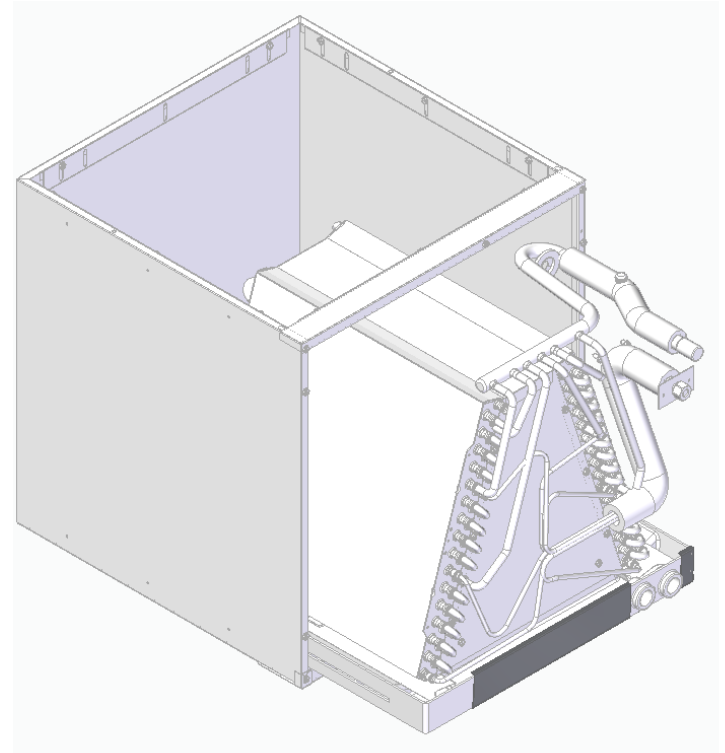


FIGURE 5

11. Place the evaporator coil back on top of the drain pan and fasten the coil/pan assembly, by using the same screws used in steps 4 and 5.
12. Install new foam gasket on the drain pan.
13. Slide the evaporator coil back inside the cabinet, ensuring the drain pan is resting on side rails of the cabinet.
14. Place the access panel door back on to the unit and screw in all required screws removed during step 1 and 2.

CUSTOMER FEEDBACK

We are very interested in all product comments.

Please fill out the feedback form on one of the following links:

Daikin Products: (<https://daikincomfort.com/contact-us>)

Goodman® Brand Products: (<http://www.goodmanmfg.com/about/contact-us>).

Amana® Brand Products: (<http://www.amana-hac.com/about-us/contact-us>).

You can also scan the QR code on the right for the product brand you purchased to be directed to the feedback page.



DAIKIN



GOODMAN® BRAND



AMANA® BRAND

19001 Kermier Rd. Waller, TX 77484
© 2021 Goodman Manufacturing Company, L.P.

Amana is a registered trademark of Maytag Corporation or its related companies and is used under license to Goodman Company, L.P., Houston, TX, USA. All rights reserved.