
VRV and SkyAir Wall Mount Unit

FAA18AAVJU
FAA24AAVJU
FXAA05AAVJU
FXAA07AAVJU
FXAA09AAVJU
FXAA12AAVJU
FXAA18AAVJU
FXAA24AAVJU

This manual is to be used by qualified technicians only.

Important Information

Index

| | |
|------------------------------|-------|
| Functional Parts List | 3 |
| Illustration and Parts | 4 - 7 |

Views shown are for parts illustrations only, not servicing procedures.

Text Codes:

AR - As Required

NA - Not Available

NS - Not Shown

00000000 - See Note

QTY - Quantity Example (QTY 3) (If Quantity not shown, Quantity = 1)

M - Model Example (M1) (If M Code not shown, then part is used on all Models)

Expanded Model Nomenclature:

| |
|--------------|
| Example |
| M1 - Model#1 |
| M2 - Model#2 |
| M3 - Model#3 |

Daikin Comfort Technologies Manufacturing , Inc. is not responsible for personal injury or property damage resulting from improper service. Review all service information before beginning repairs.

Warranty service must be performed by an authorized technician, using authorized factory parts. If service is required after the warranty expires, Daikin Comfort Technologies Manufacturing , Inc. also recommends contacting an authorized technician and using authorized factory parts.

Daikin Comfort Technologies Manufacturing , Inc. reserves the right to discontinue, or change at any time, specifications or designs without notice or without incurring obligations.

For assistance within the U.S.A. contact:
Homeowner Support
Daikin Comfort Technologies Manufacturing , Inc.
19001 Kermier Road
Waller, Texas 77484
855-770-5678-Telephone
713-863-2382-Facsimile

For assistance outside the U.S.A. contact:
International Division
Daikin Comfort Technologies Manufacturing , Inc.
19001 Kermier Road
Waller, Texas 77484
713-861-2500-Telephone
713-863-2382-Facsimile

Functional Parts

Part

No: Description:

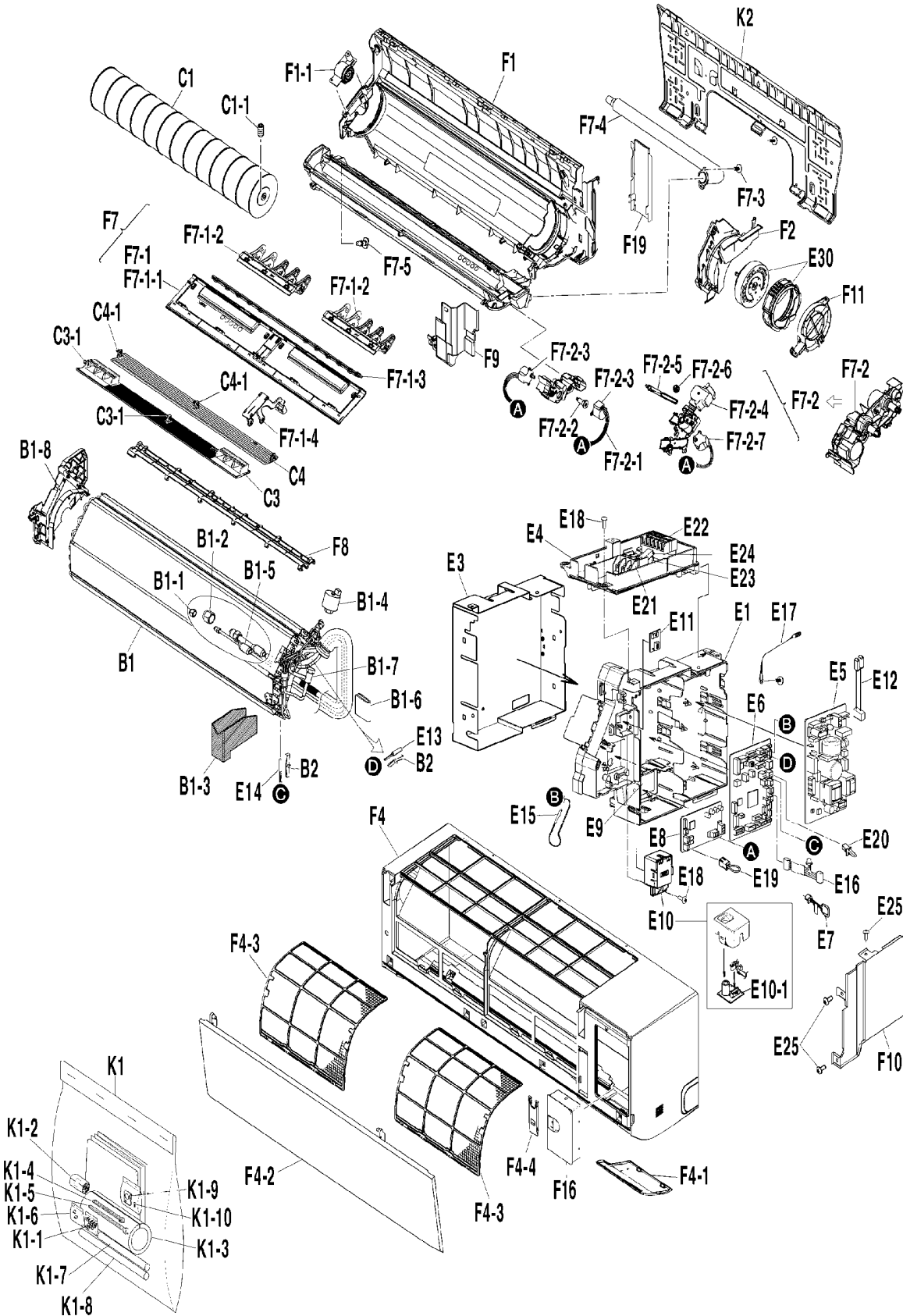
| | |
|---------|---|
| 066963J | CAPACITY SETTING ADAPTOR (M3, M4) |
| 065336J | CAPACITY SETTING ADAPTOR (M2, M8) |
| 065331J | CAPACITY SETTING ADAPTOR (M6) |
| 064060J | CAPACITY SETTING ADAPTOR (M1) |
| 066964J | CAPACITY SETTING ADAPTOR (M5) |
| 2564294 | DC FAN MOTOR ASSY. (M1, M2, M7, M8) |
| 2564131 | FAN MOTOR ASSY. (M3, M4, M5, M6) |
| 2564231 | GAS SENSOR |
| 2570716 | PRINTED CIRCUIT BOARD ASSY. (CONTROL) (M4) |
| 2570715 | PRINTED CIRCUIT BOARD ASSY. (CONTROL) (M3) |
| 2570717 | PRINTED CIRCUIT BOARD ASSY. (CONTROL) (M5) |
| 2570718 | PRINTED CIRCUIT BOARD ASSY. (CONTROL) (M1, M2, M6, M7, M8) |
| 2563254 | PRINTED CIRCUIT BOARD ASSY. (FAN) (M1, M2, M7, M8) |
| 2563253 | PRINTED CIRCUIT BOARD ASSY. (FAN) (M3, M4, M5, M6) |
| 2193085 | PRINTED CIRCUIT BOARD ASSY. (HUMIDITY SENSOR) |
| 2564767 | PRINTED CIRCUIT BOARD ASSY. (POWER) |
| 1906543 | STEPPING MOTOR (QTY 3) |

Expanded Model Nomenclature

| |
|------------------|
| M1 - FAA18AAVJU |
| M2 - FAA24AAVJU |
| M3 - FXAA05AAVJU |
| M4 - FXAA07AAVJU |
| M5 - FXAA09AAVJU |
| M6 - FXAA12AAVJU |
| M7 - FXAA18AAVJU |
| M8 - FXAA24AAVJU |

FXAA[05,07,09,12]AAVJU

FXAA05AAVJU / FXAA07AAVJU / FXAA09AAVJU / FXAA12AAVJU



Picture Key

| Ref # | Picture # |
|-------|-----------|
| 1 | B1 |
| 2 | B1-1 |
| 3 | B1-2 |
| 4 | B1-3 |
| 5 | B1-4 |
| 6 | B1-5 |
| 7 | B1-6 |
| 8 | B1-7 |
| 9 | B1-8 |
| 10 | B2 |
| 11 | C1 |
| 12 | C1-1 |
| 13 | C3 |
| 14 | C3-1 |
| 15 | C4 |
| 16 | C4-1 |
| 17 | E1 |
| 18 | E10 |
| 19 | E10-1 |
| 20 | E11 |
| 21 | E12 |
| 22 | E13 |
| 23 | E14 |
| 24 | E15 |
| 25 | E16 |
| 26 | E17 |
| 27 | E18 |
| 28 | E19 |
| 29 | E20 |
| 30 | E21 |
| 31 | E22 |
| 32 | E23 |
| 33 | E24 |
| 34 | E25 |
| 35 | E3 |
| 36 | E30 |
| 37 | E4 |
| 38 | E5 |
| 39 | E6 |
| 40 | E7 |
| 41 | E8 |
| 42 | E9 |
| 43 | F1 |
| 44 | F10 |
| 45 | F11 |
| 46 | F1-1 |
| 47 | F16 |
| 48 | F19 |
| 49 | F2 |
| 50 | F4 |
| 51 | F4-1 |
| 52 | F4-2 |
| 53 | F4-3 |
| 54 | F4-4 |
| 55 | F7 |
| 56 | F7-1 |
| 57 | F7-1-1 |
| 58 | F7-1-2 |
| 59 | F7-1-3 |
| 60 | F7-1-4 |
| 61 | F7-2 |
| 62 | F7-2-1 |
| 63 | F7-2-2 |
| 64 | F7-2-3 |
| 65 | F7-2-4 |
| 66 | F7-2-5 |
| 67 | F7-2-6 |
| 68 | F7-2-7 |
| 69 | F7-3 |
| 70 | F7-4 |
| 71 | F7-5 |
| 72 | F8 |
| 73 | F9 |
| 74 | K1 |
| 75 | K1-1 |
| 76 | K1-10 |
| 77 | K1-2 |
| 78 | K1-3 |
| 79 | K1-4 |
| 80 | K1-5 |
| 81 | K1-6 |
| 82 | K1-7 |
| 83 | K1-8 |
| 84 | K1-9 |
| 85 | K2 |

FXAA[05,07,09,12]AAVJU

| Ref. Part No: | Ref. Part No: | Description: | Description: | | |
|-----------------|---------------|--|--------------|---------|--|
| Image 1: | | Image 1: | | | |
| 1 | 2569819 | HEAT EXCHANGER ASSY. (M3, M4, M5, M6) | 39 | 2570718 | PRINTED CIRCUIT BOARD ASSY. (CONTROL) (M6) |
| 2 | 5012634 | FLARE NUT (M3, M4, M5, M6) | 40 | 065331J | CAPACITY SETTING ADAPTOR (M6) |
| 3 | 119849J | FLARE NUT (M3, M4, M5, M6) | 40 | 066963J | CAPACITY SETTING ADAPTOR (M3, M4) |
| 4 | 2562654 | PUTTY (M3, M4, M5, M6) | 40 | 066964J | CAPACITY SETTING ADAPTOR (M5) |
| 5 | 2563417 | COIL/ ELECTRONIC EXP. VALVE (M3, M4, M5, M6) | 41 | 2563253 | PRINTED CIRCUIT BOARD ASSY. (FAN) (M3, M4, M5, M6) |
| 6 | 2564988 | FILTER (M3, M4, M5, M6) | 42 | 2444389 | INSULATION SHEET (RADIATION) (M3, M4, M5, M6) |
| 7 | 2564972 | PUTTY (M3, M4, M5, M6) | 43 | 2565163 | BOTTOM FRAME ASSY. (M3, M4, M5, M6) |
| 8 | 2563416 | BODY/ ELECTRONIC EXP. VALVE (M3, M4, M5, M6) | 44 | 2570712 | EL. COMPO. BOX COVER ASSY. (M3, M4, M5, M6) |
| 9 | 2535222 | SIDE PANEL (LEFT) (M3, M4, M5, M6) | 45 | 2535258 | MOTOR COVER (CAP) (M3, M4, M5, M6) |
| 10 | 380120J | FITTING SPRING/ THERMISTOR (M3, M4, M5, M6) | 46 | 2535239 | FAN BEARING VIBRATION ABSORBER (M3, M4, M5, M6) |
| 11 | 2490173 | CROSS FLOW FAN ASSY. (M3, M4, M5, M6) | 47 | 2570711 | SERVICE COVER ASSY. (M3, M4, M5, M6) |
| 12 | 051605J | HEX. SOCKET SCREW (M3, M4, M5, M6) | 48 | 2535261 | PIPING FIXTURE (M3, M4, M5, M6) |
| 13 | 2563562 | DISCH. GRILLE HOR. BLADE (MAIN) (M3, M4, M5, M6) | 49 | 2562645 | RIGHT SIDE PANEL ASSY. (M3, M4, M5, M6) |
| 14 | 1840922 | ROD/ HORIZONTAL VANE (M3, M4, M5, M6) | 50 | 2563424 | FRONT GRILLE ASSY. (TOP) (M3, M4, M5, M6) |
| 15 | 2563670 | DISCH. GRILLE HOR. BLADE ASSY. (SUB) (M3, M4, M5, M6) | 51 | 2570709 | CONTROL PANEL (M3, M4, M5, M6) |
| 16 | 1840922 | ROD/ HORIZONTAL VANE (M3, M4, M5, M6) | 52 | 2564979 | DECORATIVE PANEL ASSY. (M3, M4, M5, M6) |
| 17 | 2563667 | EL. COMPO. BOX (M3, M4, M5, M6) | 53 | 2562111 | AIR FILTER (M3, M4, M5, M6) |
| 18 | 2570707 | RESIN CASE (SENSOR) ASSY. (M3, M4, M5, M6) | 54 | 2535256 | SUPPORT PLATE (M3, M4, M5, M6) |
| 19 | 2564231 | GAS SENSOR (M3, M4, M5, M6) | 55 | 2563423 | DRAIN PAN ASSY. (M3, M4, M5, M6) |
| 20 | 2193085 | PRINTED CIRCUIT BOARD ASSY. (HUMIDITY SENSOR) (M3, M4, M5, M6) | 56 | 2554221 | AIR OUTLET (STABILIZER) ASSY. (M3, M4, M5, M6) |
| 21 | 2564974 | WIRE HARNESS (POWER) (M3, M4, M5, M6) | 57 | 2554222 | DRAIN PAN (UNDER COVER) (M3, M4, M5, M6) |
| 22 | 2563419 | THERMISTOR ASSY. (LIQUID) (M3, M4, M5, M6) | 58 | 2534860 | DISCHARGE GRILLE VERT. BLADE (M3, M4, M5, M6) |
| 23 | 2563420 | THERMISTOR ASSY. (GAS) (M3, M4, M5, M6) | 59 | 2543216 | CONNECTING ROD (V-BLADE) (M3, M4, M5, M6) |
| 24 | 2563560 | THERMISTOR (FOR SUCTION AIR) (M3, M4, M5, M6) | 60 | 2535242 | DRAIN PAN ARM (M3, M4, M5, M6) |
| 25 | 2564647 | WIRE HARNESS ASSY. (RELAY) (M3, M4, M5, M6) | 61 | NA | GEAR CASE ASSY. (M3, M4, M5, M6) |
| 26 | 2553676 | EARTH WIRE (M3, M4, M5, M6) | 62 | 2564978 | WIRE HARNESS (M3, M4, M5, M6) |
| 27 | 109688J | TRUSS HEAD TAPPING SCREW (M3, M4, M5, M6) | 63 | 2535248 | SHAFT (H_BLADE) (M3, M4, M5, M6) |
| 28 | 2026161 | CONNECTOR ASSY. (M3, M4, M5, M6) | 64 | 1906543 | STEPPING MOTOR (M3, M4, M5, M6) |
| 29 | 1302259 | WIRE HARNESS (SHORT CIRCUIT) (M3, M4, M5, M6) | 65 | 2535249 | GEAR CASE (V-BLADE) (M3, M4, M5, M6) |
| 30 | 2395519 | TERMINAL BLOCK (M3, M4, M5, M6) | 66 | 2535250 | GEAR (LACK) (M3, M4, M5, M6) |
| 31 | 2569822 | TERMINAL BLOCK (M3, M4, M5, M6) | 67 | 2535247 | GEAR (MOTOR) (M3, M4, M5, M6) |
| 32 | 2564976 | EARTH WIRE (M3, M4, M5, M6) | 68 | 1906543 | STEPPING MOTOR (M3, M4, M5, M6) |
| 33 | 2564977 | EARTH WIRE (M3, M4, M5, M6) | 69 | 170429J | TAPPING SCREW (M3, M4, M5, M6) |
| 34 | 2374334 | PAN HEAD MACHINE SCREW S-TIGHT (M3, M4, M5, M6) | 70 | 2558864 | DRAIN HOSE (M3, M4, M5, M6) |
| 35 | 2563668 | EL. COMPO. BOX (FIRE WALL) (M3, M4, M5, M6) | 71 | 6028456 | DRAIN PLUG (M3, M4, M5, M6) |
| 36 | 2564131 | FAN MOTOR ASSY. (M3, M4, M5, M6) | 72 | 2570720 | SEALING PLATE (TOP) ASSY. (M3, M4, M5, M6) |
| 37 | 2562637 | MOUNTING PLATE ASSY. (TERMINAL) (M3, M4, M5, M6) | 73 | 2564980 | DRIP PROOF PLATE ASSY. (M3, M4, M5, M6) |
| 38 | 2564767 | PRINTED CIRCUIT BOARD ASSY. (POWER) (M3, M4, M5, M6) | 74 | NA | ACCESSORY SET (M3, M4, M5, M6) |
| 39 | 2570715 | PRINTED CIRCUIT BOARD ASSY. (CONTROL) (M3) | 75 | 1679872 | SCREW KIT (M3, M4, M5, M6) |
| 39 | 2570716 | PRINTED CIRCUIT BOARD ASSY. (CONTROL) (M4) | 76 | 121650J | TRUSS HEAD TAPPING SCREW (M3, M4, M5, M6) |
| 39 | 2570717 | PRINTED CIRCUIT BOARD ASSY. (CONTROL) (M5) | 77 | 081957J | HEAT INSULATION TAPE (M3, M4, M5, M6) |
| | | | 78 | 2570752 | THERMAL INSULATION TUBE (M3, M4, M5, M6) |
| | | | 79 | 980774J | TIE WRAP (M3, M4, M5, M6) |
| | | | 80 | 980773 | TIE WRAP (M3, M4, M5, M6) |
| | | | 81 | 2543221 | ACCESSORY SET (SCREW COVER) (M3, M4, M5, M6) |
| | | | 82 | 2223506 | ELECTRIC INSULATION (M3, M4, M5, M6) |
| | | | 83 | 2570713 | ELECTRIC INSULATION (M3, M4, M5, M6) |
| | | | 84 | 2570714 | CONDUIT MOUNTING PLATE (M3, M4, M5, M6) |
| | | | 85 | 2543222 | INSTALLATION PLATE LETTER (M3, M4, M5, M6) |

FXAA[05,07,09,12]AAVJU

Ref. Part

No: No:

Description:

Ref. Part

No: No:

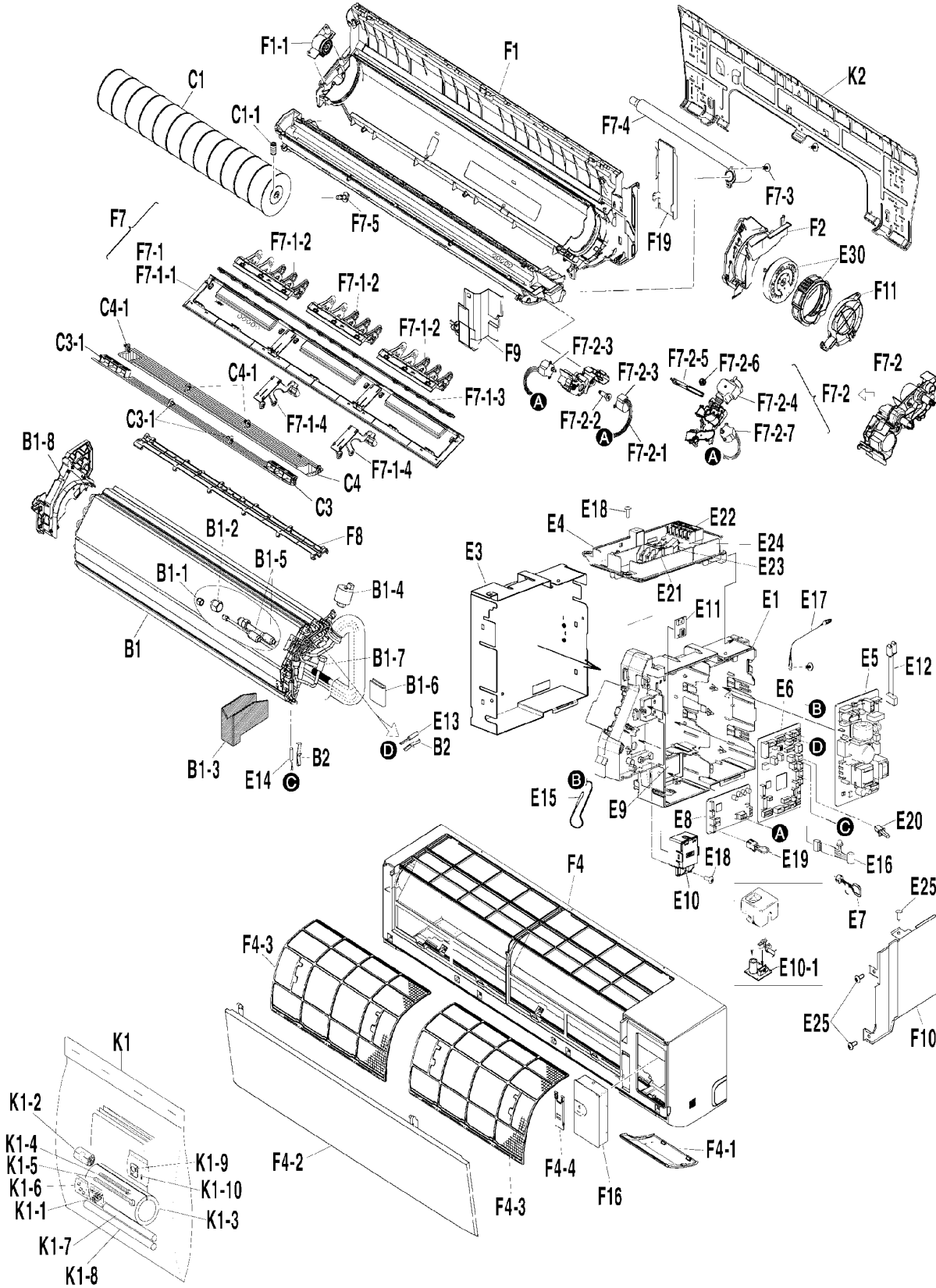
Description:

Expanded Model Nomenclature

| |
|------------------|
| M1 - FAA18AAVJU |
| M2 - FAA24AAVJU |
| M3 - FXAA05AAVJU |
| M4 - FXAA07AAVJU |
| M5 - FXAA09AAVJU |
| M6 - FXAA12AAVJU |
| M7 - FXAA18AAVJU |
| M8 - FXAA24AAVJU |

FAA[18,24] FXAA[18,24]AAVJU

FAA18AAVJU / FAA24AAVJU / FXAA18AAVJU / FXAA24AAVJU



| Picture Key | |
|-------------|-----------|
| Ref # | Picture # |
| 1 | B1 |
| 2 | B1-1 |
| 3 | B1-2 |
| 4 | B1-3 |
| 5 | B1-4 |
| 6 | B1-5 |
| 7 | B1-6 |
| 8 | B1-7 |
| 9 | B1-8 |
| 10 | B2 |
| 11 | C1 |
| 12 | C1-1 |
| 13 | C3 |
| 14 | C3-1 |
| 15 | C4 |
| 16 | C4-1 |
| 17 | E1 |
| 18 | E10 |
| 19 | E10-1 |
| 20 | E11 |
| 21 | E12 |
| 22 | E13 |
| 23 | E14 |
| 24 | E15 |
| 25 | E16 |
| 26 | E17 |
| 27 | E18 |
| 28 | E19 |
| 29 | E20 |
| 30 | E21 |
| 31 | E22 |
| 32 | E23 |
| 33 | E24 |
| 34 | E25 |
| 35 | E3 |
| 36 | E30 |
| 37 | E4 |
| 38 | E5 |
| 39 | E6 |
| 40 | E7 |
| 41 | E8 |
| 42 | E9 |
| 43 | F1 |
| 44 | F10 |
| 45 | F11 |
| 46 | F1-1 |
| 47 | F1-2 |
| 48 | F1-3 |
| 49 | F2 |
| 50 | F4 |
| 51 | F4-1 |
| 52 | F4-2 |
| 53 | F4-3 |
| 54 | F4-4 |
| 55 | F7 |
| 56 | F7-1 |
| 57 | F7-1-1 |
| 58 | F7-1-2 |
| 59 | F7-1-3 |
| 60 | F7-1-4 |
| 61 | F7-2 |
| 62 | F7-2-1 |
| 63 | F7-2-2 |
| 64 | F7-2-3 |
| 65 | F7-2-4 |
| 66 | F7-2-5 |
| 67 | F7-2-6 |
| 68 | F7-2-7 |
| 69 | F7-3 |
| 70 | F7-4 |
| 71 | F7-5 |
| 72 | F8 |
| 73 | F9 |
| 74 | K1 |
| 75 | K1-1 |
| 76 | K1-10 |
| 77 | K1-2 |
| 78 | K1-3 |
| 79 | K1-4 |
| 80 | K1-5 |
| 81 | K1-6 |
| 82 | K1-7 |
| 83 | K1-8 |
| 84 | K1-9 |
| 85 | K2 |

FAA[18,24] FXAA[18,24]AAVJU

| Ref. Part No: No: | Description: | Ref. Part No: No: | Description: |
|-------------------|--|-------------------|--|
| Image 1: | | Image 1: | |
| 1 | 2569820 HEAT EXCHANGER ASSY. (M7) | 41 | 2563254 PRINTED CIRCUIT BOARD ASSY. (FAN) (M1, M2, M7, M8) |
| 1 | 2569821 HEAT EXCHANGER ASSY. (M1, M2, M8) | | |
| 2 | 119848J FLARE NUT (M1, M2, M8) | 42 | 2444389 INSULATION SHEET (RADIATION) (M1, M2, M7, M8) |
| 2 | 5012634 FLARE NUT (M7) | | |
| 3 | 119849J FLARE NUT (M7) | 43 | 2536608 BOTTOM FRAME ASSY. (M1, M2, M7, M8) |
| 3 | 119850J FLARE NUT (M1, M2, M8) | 44 | 2570712 EL. COMPO. BOX COVER ASSY. (M1, M2, M7, M8) |
| 4 | 2562654 PUTTY (M1, M2, M7, M8) | 45 | 2535258 MOTOR COVER (CAP) (M1, M2, M7, M8) |
| 5 | 2563417 COIL/ ELECTRONIC EXP. VALVE (M1, M2, M7, M8) | 46 | 2535239 FAN BEARING VIBRATION ABSORBER (M1, M2, M7, M8) |
| 6 | 2564988 FILTER (M1, M2, M7, M8) | | |
| 7 | 2564972 PUTTY (M1, M2, M7, M8) | 47 | 2570711 SERVICE COVER ASSY. (M1, M2, M7, M8) |
| 8 | 2563005 BODY/ ELECTRONIC EXP. VALVE (M1, M2, M7, M8) | 48 | 2535261 PIPING FIXTURE (M1, M2, M7, M8) |
| | | 49 | 2562645 RIGHT SIDE PANEL ASSY. (M1, M2, M7, M8) |
| 9 | 2535222 SIDE PANEL (LEFT) (M1, M2, M7, M8) | 50 | 2570852 FRONT GRILLE ASSY. (TOP) (M1, M2, M7, M8) |
| 10 | 380120J FITTING SPRING/ THERMISTOR (M1, M2, M7, M8) | 51 | 2570709 CONTROL PANEL (M1, M2, M7, M8) |
| 11 | 2533898 CROSS FLOW FAN ASSY. (M1, M2, M7, M8) | 52 | 2564990 DECORATIVE PANEL ASSY. (M1, M2, M7, M8) |
| 12 | 051605J HEX SOCKET SCREW (M1, M2, M7, M8) | 53 | 2563344 AIR FILTER (M1, M2, M7, M8) |
| 13 | 2563563 DISCH. GRILLE HOR. BLADE (MAIN) (M1, M2, M7, M8) | 54 | 2535256 SUPPORT PLATE (M1, M2, M7, M8) |
| | | 55 | 2570851 DRAIN PAN ASSY. (M1, M2, M7, M8) |
| 14 | 1840922 ROD/ HORIZONTAL VANE (M1, M2, M7, M8) | 56 | 2553775 AIR OUTLET (STABILIZER) ASSY. (M1, M2, M7, M8) |
| 15 | 2570853 DISCH. GRILLE HOR. BLADE ASSY. (SUB) (M1, M2, M7, M8) | 57 | 2554233 DRAIN PAN (UNDER COVER) (M1, M2, M7, M8) |
| | | 58 | 2534860 DISCHARGE GRILLE VERT. BLADE (M1, M2, M7, M8) |
| 16 | 1840922 ROD/ HORIZONTAL VANE (M1, M2, M7, M8) | | |
| 17 | 2563667 EL. COMPO. BOX (M1, M2, M7, M8) | 59 | 2535276 CONNECTING ROD (V-BLADE) (M1, M2, M7, M8) |
| 18 | 2570707 RESIN CASE (SENSOR) ASSY. (M1, M2, M7, M8) | 60 | 2535242 DRAIN PAN ARM (M1, M2, M7, M8) |
| 19 | 2564231 GAS SENSOR (M1, M2, M7, M8) | 61 | NA GEAR CASE ASSY. (M1, M2, M7, M8) |
| 20 | 2193085 PRINTED CIRCUIT BOARD ASSY. (HUMIDITY SENSOR) (M1, M2, M7, M8) | 62 | 2564978 WIRE HARNESS (M1, M2, M7, M8) |
| | | 63 | 2535248 SHAFT (H_BLADE) (M1, M2, M7, M8) |
| 21 | 2564974 WIRE HARNESS (POWER) (M1, M2, M7, M8) | 64 | 1906543 STEPPING MOTOR (M1, M2, M7, M8) |
| 22 | 2563419 THERMISTOR ASSY. (LIQUID) (M1, M2, M7, M8) | 65 | 2535249 GEAR CASE (V-BLADE) (M1, M2, M7, M8) |
| 23 | 2563420 THERMISTOR ASSY. (GAS) (M1, M2, M7, M8) | 66 | 2535250 GEAR (LACK) (M1, M2, M7, M8) |
| 24 | 2563560 THERMISTOR (FOR SUCTION AIR) (M1, M2, M7, M8) | 67 | 2535247 GEAR (MOTOR) (M1, M2, M7, M8) |
| | | 68 | 1906543 STEPPING MOTOR (M1, M2, M7, M8) |
| 25 | 2564647 WIRE HARNESS ASSY. (RELAY) (M1, M2, M7, M8) | 69 | 170429J TAPPING SCREW (M1, M2, M7, M8) |
| 26 | 2553676 EARTH WIRE (M1, M2, M7, M8) | 70 | 2558864 DRAIN HOSE (M1, M2, M7, M8) |
| 27 | 109688J TRUSS HEAD TAPPING SCREW (M1, M2, M7, M8) | 71 | 6028456 DRAIN PLUG (M1, M2, M7, M8) |
| 28 | 2026161 CONNECTOR ASSY. (M1, M2, M7, M8) | 72 | 2570710 SEALING PLATE (M1, M2, M7, M8) |
| 29 | 1302259 WIRE HARNESS (SHORT CIRCUIT) (M1, M2, M7, M8) | 73 | 2564980 DRIP PROOF PLATE ASSY. (M1, M2, M7, M8) |
| | | 74 | NA ACCESSORY SET (M1, M2, M7, M8) |
| 30 | 2395519 TERMINAL BLOCK (M1, M2, M7, M8) | 75 | 1679889 SCREW KIT (M1, M2, M7, M8) |
| 31 | 2569822 TERMINAL BLOCK (M1, M2, M7, M8) | 76 | 121650J TRUSS HEAD TAPPING SCREW (M1, M2, M7, M8) |
| 32 | 2564976 EARTH WIRE (M1, M2, M7, M8) | 77 | 081957J HEAT INSULATION TAPE (M1, M2, M7, M8) |
| 33 | 2564977 EARTH WIRE (M1, M2, M7, M8) | 78 | 2570752 THERMAL INSULATION TUBE (M1, M2, M7, M8) |
| 34 | 2374334 PAN HEAD MACHINE SCREW S-TIGHT (M1, M2, M7, M8) | 79 | 980774J TIE WRAP (M1, M2, M7, M8) |
| | | 80 | 980773 TIE WRAP (M1, M2, M7, M8) |
| 35 | 2563668 EL. COMPO. BOX (FIRE WALL) (M1, M2, M7, M8) | 81 | 2543223 ACCESSORY SET (SCREW COVER) (M1, M2, M7, M8) |
| 36 | 2564294 DC FAN MOTOR ASSY. (M1, M2, M7, M8) | | |
| 37 | 2562637 MOUNTING PLATE ASSY. (TERMINAL) (M1, M2, M7, M8) | 82 | 2223506 ELECTRIC INSULATION (M1, M2, M7, M8) |
| | | 83 | 2570713 ELECTRIC INSULATION (M1, M2, M7, M8) |
| 38 | 2564767 PRINTED CIRCUIT BOARD ASSY. (POWER) (M1, M2, M7, M8) | 84 | 2570714 CONDUIT MOUNTING PLATE (M1, M2, M7, M8) |
| | | 85 | 2535280 INSTALLATION PLATE LETTER (M1, M2, M7, M8) |
| 39 | 2570718 PRINTED CIRCUIT BOARD ASSY. (CONTROL) (M1, M2, M7, M8) | | |
| 40 | 064060J CAPACITY SETTING ADAPTOR (M1) | | |
| 40 | 065336J CAPACITY SETTING ADAPTOR (M2, M8) | | |

FAA[18,24] FXAA[18,24]AAVJU

Ref. Part

No: No:

Description:

Ref. Part

No: No:

Description:

Expanded Model Nomenclature

| |
|------------------|
| M1 - FAA18AAVJU |
| M2 - FAA24AAVJU |
| M3 - FXAA05AAVJU |
| M4 - FXAA07AAVJU |
| M5 - FXAA09AAVJU |
| M6 - FXAA12AAVJU |
| M7 - FXAA18AAVJU |
| M8 - FXAA24AAVJU |