

---

## [C,F]TXV [2,3,4]MXM 2MXT[H] Multi Zone Units

2MXM18AVJU9  
2MXT18AVJU9  
2MXTH18AVJU9  
3MXM24AVJU9  
4MXM36AVJU9  
CTXV07AVJU9  
FTXV09AVJU9  
FTXV12AVJU9  
FTXV15AVJU9  
FTXV18AVJU9  
FTXV24AVJU9  
FTXV30AVJU9  
FTXV36AVJU9



This manual is to be used by qualified technicians only.

This manual replaces RP-D6410

# Important Information

---

## Index

Functional Parts List .....	3
Illustration and Parts .....	4 - 19

*Views shown are for parts illustrations only, not servicing procedures.*

### Text Codes:

AR - As Required

NA - Not Available

NS - Not Shown

00000000 - See Note

QTY - Quantity Example (QTY 3) (If Quantity not shown, Quantity = 1)

M - Model Example (M1) (If M Code not shown, then part is used on all Models)

### Expanded Model Nomenclature:

Example
M1 - Model#1
M2 - Model#2
M3 - Model#3

Daikin Comfort Technologies Manufacturing , Inc. is not responsible for personal injury or property damage resulting from improper service. Review all service information before beginning repairs.

Warranty service must be performed by an authorized technician, using authorized factory parts. If service is required after the warranty expires, Daikin Comfort Technologies Manufacturing , Inc. also recommends contacting an authorized technician and using authorized factory parts.

Daikin Comfort Technologies Manufacturing , Inc. reserves the right to discontinue, or change at any time, specifications or designs without notice or without incurring obligations.

For assistance within the U.S.A. contact:  
Homeowner Support  
Daikin Comfort Technologies Manufacturing , Inc.  
19001 Kermier Road  
Waller, Texas 77484  
855-770-5678-Telephone  
713-863-2382-Facsimile

For assistance outside the U.S.A. contact:  
International Division  
Daikin Comfort Technologies Manufacturing , Inc.  
19001 Kermier Road  
Waller, Texas 77484  
713-861-2500-Telephone  
713-863-2382-Facsimile

# Functional Parts

## Part

## No: Description:

---

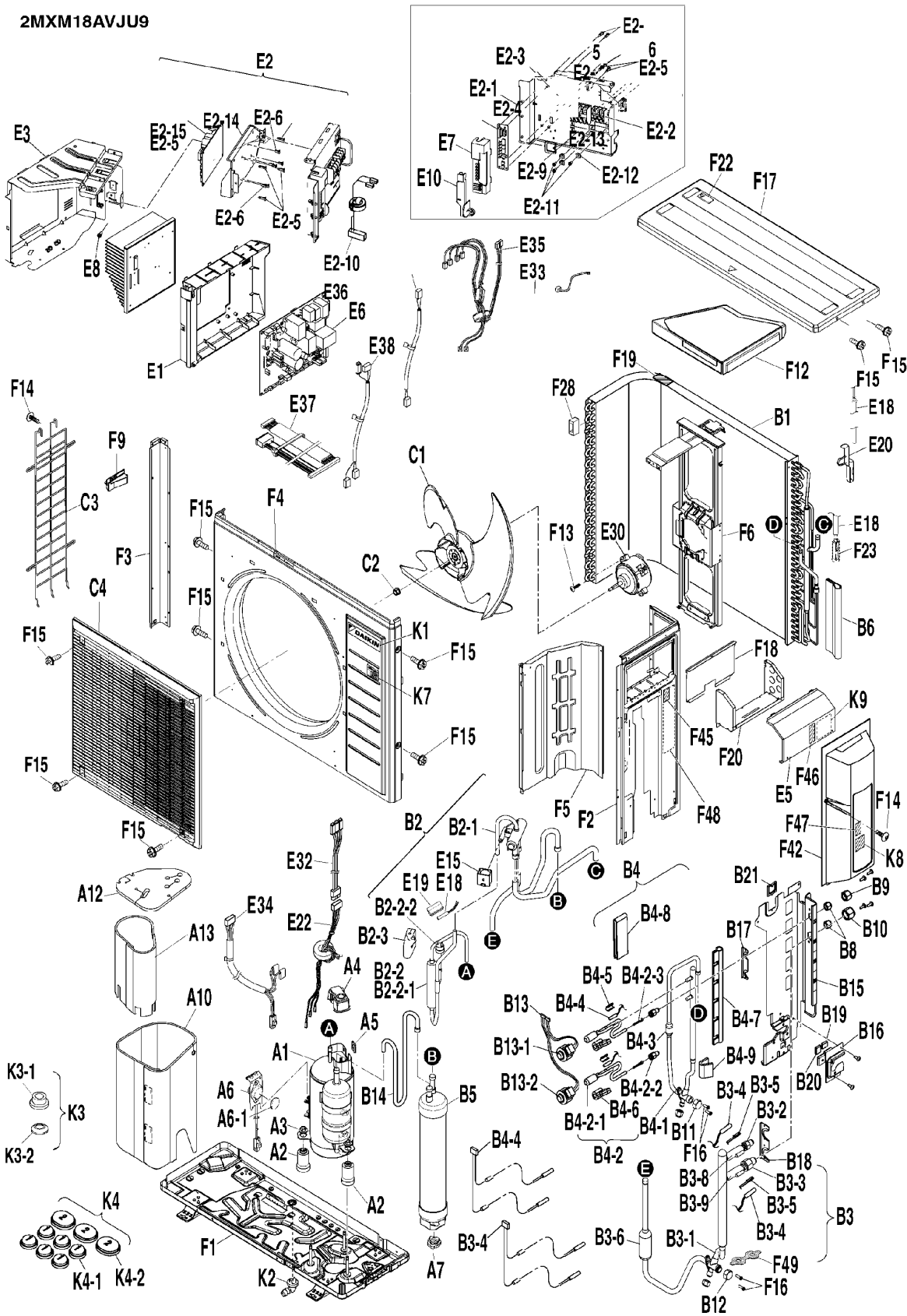
2561305	COMPRESSOR (M12, M13)
2561305	COMPRESSOR (M10, M11)
2558463	COMPRESSOR ASSY. (M9)
2549103	DC FAN MOTOR (M7, M8)
2561027	DC FAN MOTOR (M9, M10, M11, M12, M13)
2534983	HIGH PRESSURE SWITCH (M9, M10, M11, M12, M13)
2546573	HUMIDITY SENSOR (M7, M8)
2560606	HUMIDITY SENSOR (M1, M2, M3, M4, M5, M6)
2428510	OVERLOAD PROTECTOR (M9, M10, M11, M12, M13)
2575555	PRINTED CIRCUIT BOARD ASSY. (M8)
2530196	PRINTED CIRCUIT BOARD ASSY. (M7, M8)
2575554	PRINTED CIRCUIT BOARD ASSY. (M7)
2547938	PRINTED CIRCUIT BOARD ASSY. (M7, M8)
2533895	PRINTED CIRCUIT BOARD ASSY. (M7, M8)
2561444	STEPPING MOTOR (M1, M2, M3)
179743J	SWING MOTOR (M4, M5, M6)

### Expanded Model Nomenclature

M1 - CTXV07AVJU9
M2 - FTXV09AVJU9
M3 - FTXV12AVJU9
M4 - FTXV15AVJU9
M5 - FTXV18AVJU9
M6 - FTXV24AVJU9
M7 - FTXV30AVJU9
M8 - FTXV36AVJU9
M9 - 2MXM18AVJU9
M10 - 2MXTH18AVJU9
M11 - 2MXT18AVJU9
M12 - 3MXM24AVJU9
M13 - 4MXM36AVJU9

# 2MXM18AVJU9

2MXM18AVJU9



Picture Key	
Ref #	Picture #
1	A1
2	A2
3	A3
4	A4
5	A5
6	A6
7	A6-1
8	A7
9	A10
10	A12
11	A13
12	B1
13	B2
14	B2-1
15	B2-2
16	B2-2-1
17	B2-2-2
18	B2-3
19	B3
20	B3-1
21	B3-2
22	B3-3
23	B3-4
24	B3-5
25	B3-6
26	B3-8
27	B3-9
28	B4
29	B4-1
30	B4-2
31	B4-2-1
32	B4-2-2
33	B4-2-3
34	B4-3
35	B4-4
36	B4-5
37	B4-6
38	B4-7
39	B4-8
40	B4-9
41	B5
42	B6
43	B8
44	B9
45	B10
46	B11
47	B12
48	B13
49	B13-1
50	B13-2
51	B14
52	B15
53	B16
54	B17
55	B18
56	B19
57	B20
58	B21
59	C1
60	C2
61	C3
62	C4
63	E1
64	E2
65	E2-1
66	E2-2
67	E2-3
68	E2-4
69	E2-5
70	E2-6
71	E2-9
72	E2-10
73	E2-11
74	E2-12
75	E2-13
76	E2-14
77	E2-15
78	E3
79	E5
80	E6
81	E7
82	E8
83	E10
84	E12
85	E18
86	E19
87	E20
88	E22
89	E23
90	E32
91	E33
92	E34
93	E35
94	E36
95	E37
96	E38
97	F1
98	F2
99	F3
100	F4
101	F5
102	F6
103	F7
104	F12
105	F13
106	F14
107	F15
108	F16
109	F17
110	F18
111	F19
112	F20
113	F22
114	F23
115	F24
116	F25
117	F26
118	F27
119	F28
120	F42
121	F43
122	K1
123	K2
124	K3
125	K3-1
126	K3-2
127	K4
128	K4-1
129	K4-2
130	K7
131	K8
132	K9

# 2MXM18AVJU9

Ref. Part No: No:	Description:	Ref. Part No: No:	Description:
<b>Image 1:</b>		<b>Image 1:</b>	
1	2558463 COMPRESSOR ASSY. (M9)	58	099951J EDGE SADDLE (M9)
2	128989J VIBRATION ABSORBER (M9)	59	2561029 PROPELLER FAN ASSY. (M9)
3	4010410 WASHER (NUT WITH WASHER) (M9)	60	847003J LOCK NUT/ FAN (M9)
4	2425597 TERMINAL COVER (M9)	61	6025762 PROTECTION NET (LEFT SIDE) (M9)
5	040139J RUBBER BUSH/ LEAD WIRE (M9)	62	6024941 DISCHARGE GRILLE ASSY. (M9)
6	2428510 OVERLOAD PROTECTOR (M9)	63	2561005 EL. COMPO. BOX (M9)
7	2428527 RADIATION SHEET (M9)	64	NA TERMINAL STRIP MOUNTING PLATE (M9)
8	380116J CUSHION RUBBER/ ACCUMULATOR (M9)	65	2561008 MOUNTING PLATE (TERMINAL STRIP) (M9)
9	2561043 SOUND INSULATION (OUTER SLEEVE) (M9)	66	2561009 TERMINAL STRIP (M9)
10	2561041 SOUND INSULATION (OUTER TOP) (M9)	67	2371498 TERMINAL BLOCK (M9)
11	2561042 SOUND INSULATION (INNER SLEEVE) (M9)	68	6025165 PRINTED CIRCUIT BOARD ASSY. (SERVICE) (M9)
12	2560995 HEAT EXCHANGER ASSY. (M9)	69	1728464 SPACER (PCB) (M9)
13	NA FOUR WAY VALVE ASSY. (M9)	70	2115472 SPACER (PCB) (M9)
14	2455992 BODY/ FOUR WAY VALVE (M9)	71	2561011 INDICATION LABEL (TERMINAL) (M9)
15	NA DISCHARGE PIPE ASSY. (M9)	72	2561010 WIRE HARNESS ASSY. (COMMUNICATION) (M9)
16	161839J MUFFLER (M9)	73	113783J TAPPING SCREW (M9)
17	2534983 HIGH PRESSURE SWITCH (M9)	74	1786749 WASHER (FOR EARTH) (M9)
18	2560996 PUTTY (HEAT RESISTANT) (M9)	75	099951J EDGE SADDLE (M9)
19	NA HEADER ASSY. (GAS) (M9)	76	2561012 MOUNTING PLATE (MULTI MODULE PCB) (M9)
20	2561003 GAS STOP VALVE ASSY. (M9)	77	2561304 PRINTED CIRCUIT BOARD ASSY. (M9)
21	257587J UNION JOINT (M9)	78	2561006 EL. COMPO. MOUNTING PLATE ASSY. (M9)
22	252012J UNION JOINT (M9)	79	2561035 TERMINAL STRIP COVER ASSY. (M9)
23	2561004 THERMISTOR ASSY. (GAS) (M9)	80	2561303 PRINTED CIRCUIT BOARD ASSY. (M9)
24	380120J FITTING SPRING/ THERMISTOR (M9)	81	2561014 COVER ASSY. (SERVICE PCB) (M9)
25	4006136 MUFFLER (M9)	82	113783J TAPPING SCREW (M9)
26	6025189 MUFFLER (M9)	83	2561015 SWITCH COVER ASSY. (M9)
27	6025190 MUFFLER (M9)	84	2532798 FOUR WAY VALVE COIL ASSY. (M9)
28	NA HEADER ASSY. (LIQUID) (M9)	85	2561016 THERMISTOR ASSY. (M9)
29	2561000 LIQUID STOP VALVE ASSY. (M9)	86	1728781 THERMISTOR FIXTURE (M9)
30	2561001 ELECTRONIC EXP. VALVE ASSY. (M9)	87	128511J FIXTURE/ THERMISTOR (M9)
31	2533579 BODY/ ELECTRONIC EXP. VALVE (M9)	88	2561028 WIRE HARNESS ASSY. (FOR COMP.) (M9)
32	060321J UNION JOINT (M9)	89	2561027 DC FAN MOTOR (M9)
33	131823J STRAINER (FOR REF.) (M9)	90	2561017 WIRE HARNESS ASSY. (COMP. RELAY) (M9)
34	2255457 MUFFLER (M9)	91	2561018 WIRE HARNESS ASSY. (FUNCTIONAL EARTH) (M9)
35	2561002 THERMISTOR ASSY. (LIQ) (M9)		
36	1303896 FIXTURE/ THERMISTOR (M9)	92	2561019 WIRE HARNESS ASSY. (FOR OL/HPS) (M9)
37	2533582 PUTTY (M9)	93	2561020 WIRE HARNESS ASSY. (L/N)(TRANSIT) (M9)
38	6025158 PUTTY (M9)	94	2561021 WIRE HARNESS ASSY. (ACS) (M9)
39	6025159 PUTTY (M9)	95	2561022 WIRE HARNESS ASSY. (SERVICE PCB) (M9)
40	139706J PUTTY (M9)	96	2561023 WIRE HARNESS ASSY. (FUNCTIONAL MODULE) (M9)
41	2560997 GAS LIQUID SEPARATOR ASSY. (M9)		
42	2255729 PUTTY (M9)	97	2561033 BOTTOM FRAME ASSY. (M9)
43	1723546 FLARE NUT (M9)	98	2561030 RIGHT SIDE PLATE (M9)
44	119848J FLARE NUT (M9)	99	2561039 LEFT SIDE PLATE (M9)
45	119849J FLARE NUT (M9)	100	2561040 FRONT PLATE (M9)
46	2158703 VALVE CAP (M9)	101	2561031 PARTITION PLATE (M9)
47	2159232 VALVE CAP (M9)	102	2561032 FAN MOTOR STAND ASSY. (M9)
48	NA COIL/ ELECTRONIC EXP. VALVE ASSY. (M9)	103	6022835 HANDLE (M9)
49	2561025 COIL/ ELECTRONIC EXP. VALVE (M9)	104	2561034 POLYETHYLENE FOAM ASSY. (M9)
50	2561026 COIL/ ELECTRONIC EXP. VALVE (M9)	105	2120405 HEX TAPPING SCREW (3) (M9)
51	NA SUCTION PIPE (M9)	106	008203J TRUSS HEAD TAPPING SCREW (M9)
52	2560998 STOP VALVE MOUNTING PLATE (1) 2R (M9)	107	109224J HEX HEAD TAPPING SCREW (M9)
53	2560999 STOP VALVE MOUNTING PLATE (2) (M9)	108	048017J PAN HEAD TAPPING SCREW (M9)
54	2255541 SINGLE UNION FIXTURE (LIQUID) (M9)	109	2561038 TOP PLATE (M9)
55	2255589 SINGLE UNION FIXTURE (GAS) (M9)	110	2561037 DRIP PROOF PLATE ASSY. (TERMINAL) (M9)
56	2255642 SEALING MATERIAL (M9)	111	6026829 SEALING MATERIAL (HEAT EXCH. TOP) (M9)
57	2255628 SEALING MATERIAL (M9)		

# 2MXM18AVJU9

**Ref. Part  
No: No:**

**Description:**

**Ref. Part  
No: No:**

**Description:**

**Image 1:**

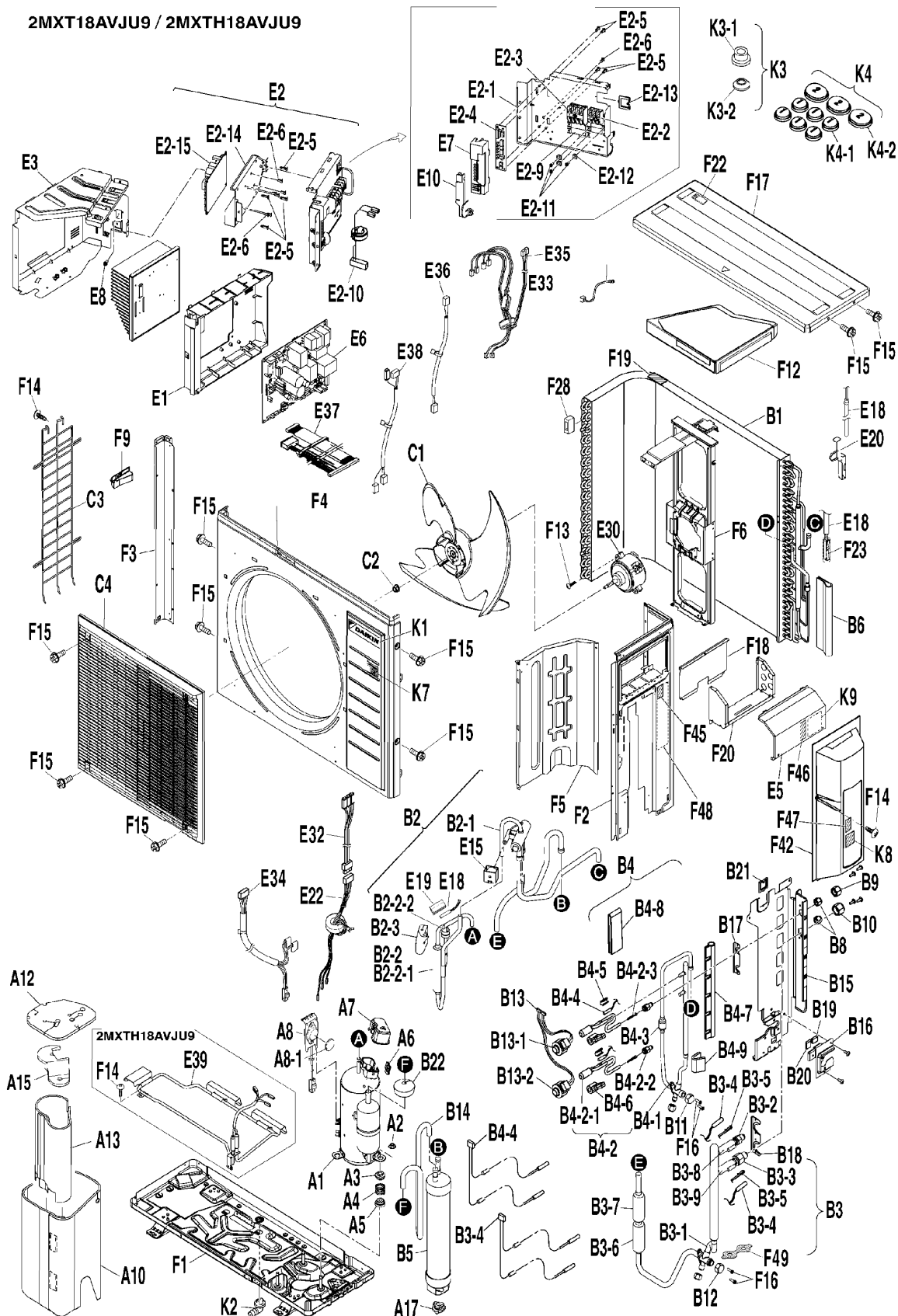
112	2561036	CONDUIT MOUNTING PLATE ASSY. (M9)
113	2561045	CAUTION LABEL (SUPERCARGO) (M9)
114	380120J	FITTING SPRING/ THERMISTOR (M9)
115	1708756	SEALING MATERIAL (M9)
116	6024004	COVER/ STOP VALVE (M9)
117	NA	CAUTION LABEL (BURN) (M9)
118	NA	CAUTION LABEL (ELECTRIC SHOCK) (M9)
119	NA	PRODUCT LIABILITY CAUTION LABEL (M9)
120	NA	CAUTION LABEL (FLAMMABLE GAS) (M9)
121	2561861	SIDE CAP (MULTI SERVICE PORT) (M9)
122	2561044	BRAND NAME LABEL (M9)
123	2561222	JOINT (DRAIN) (M9)
124	NA	REDUCING JOINT ASSY. (M9)
125	257712J	GASKET/ REDUCING JOINT (M9)
126	257709J	GASKET/ REDUCING JOINT (M9)
127	NA	ACCESSORY SET (M9)
128	2253709	CAP 1 (DRAIN) (M9)
129	2253716	CAP 2 (DRAIN) (M9)
130	2561738	LABEL NAME PLATE (INVERTER R32) (M9)
131	2561739	ADDITIONAL REFR. CHARGE LABEL (M9)
132	NA	HANDLING LABEL (1) (M9)

**Expanded Model Nomenclature**

M1 - CTXV07AVJU9
M2 - FTXV09AVJU9
M3 - FTXV12AVJU9
M4 - FTXV15AVJU9
M5 - FTXV18AVJU9
M6 - FTXV24AVJU9
M7 - FTXV30AVJU9
M8 - FTXV36AVJU9
M9 - 2MXM18AVJU9
M10 - 2MXTH18AVJU9
M11 - 2MXT18AVJU9
M12 - 3MXM24AVJU9
M13 - 4MXM36AVJU9

# 2MXT[H]18AVJU9

2MXT18AVJU9 / 2MXTH18AVJU9



Picture Key	
Ref #	Picture #
1	A1
2	A10
3	A13
4	A15
5	A17
6	A2
7	A3
8	A4
9	A5
10	A6
11	A7
12	A8
13	A8-1
14	B1
15	B10
16	B11
17	B12
18	B13
19	B13-1
20	B13-2
21	B14
22	B15
23	B16
24	B17
25	B18
26	B19
27	B2
28	B20
29	B21
30	B2-1
31	B2-2
32	B2-3
33	B2-2-1
34	B2-2-2
35	B3
36	B3
37	B3-1
38	B3-2
39	B3-3
40	B3-4
41	B3-5
42	B3-6
43	B3-7
44	B3-8
45	B3-9
46	B4
47	B4-1
48	B4-2
49	B4-2-1
50	B4-2-2
51	B4-2-3
52	B4-3
53	B4-4
54	B4-5
55	B4-6
56	B4-7
57	B4-8
58	B4-9
59	B5
60	B6
61	B8
62	B9
63	C1
64	C2
65	C3
66	C4
67	E1
68	E10
69	E15
70	E18
71	E19
72	E2
73	E2-1
74	E2-10
75	E2-11
76	E2-12
77	E2-13
78	E2-14
79	E2-15
80	E2-5
81	E2-6
82	E2-9
83	E2-3
84	E2-4
85	E2-5
86	E2-6
87	E2-7
88	E3
89	E30
90	E32
91	E33
92	E34
93	E35
94	E36
95	E37
96	E38
97	E39
98	E5
99	E6
100	E7
101	E8
102	F1
103	F12
104	F13
105	F14
106	F15
107	F16
108	F17
109	F18
110	F19
111	F2
112	F20
113	F22
114	F23
115	F24
116	F25
117	F26
118	F27
119	F28
120	F4
121	F45
122	F46
123	F47
124	F48
125	F49
126	F5
127	F6
128	F7
129	F8
130	K1
131	K2
132	K3
133	K3-1
134	K3-2
135	K4
136	K4-1
137	K4-2

# 2MXT[H]18AVJU9

Ref. Part No:	Ref. Part No:	Description:	Description:
<b>Image 1:</b>		<b>Image 1:</b>	
1	2561305	COMPRESSOR (M10, M11)	56 6025158 PUTTY (M10, M11)
2	2561043	SOUND INSULATION (OUTER SLEEVE) (M10, M11)	57 6025159 PUTTY (M10, M11)
3	2561316	SOUND INSULATION (INNER SLEEVE) (M10, M11)	58 139706J PUTTY (M10, M11)
4	6025183	SOUND INSULATION (INNER TOP) (M10, M11)	59 2560997 GAS LIQUID SEPARATOR ASSY. (M10, M11)
5	380116J	CUSHION RUBBER/ ACCUMULATOR (M10, M11)	60 2255729 PUTTY (M10, M11)
6	4010410	WASHER (NUT WITH WASHER) (M10, M11)	61 1723546 FLARE NUT (M10, M11)
7	096039J	SPRING HOLDER (1) (M10, M11)	62 119848J FLARE NUT (M10, M11)
8	390208J	MOUNTING SPRING (M10, M11)	63 2561029 PROPELLER FAN ASSY. (M10, M11)
9	4016565	SPRING HOLDER (2) (M10, M11)	64 847003J LOCK NUT/ FAN (M10, M11)
10	040139J	RUBBER BUSH/ LEAD WIRE (M10, M11)	65 6025762 PROTECTION NET (LEFT SIDE) (M10, M11)
11	2425597	TERMINAL COVER (M10, M11)	66 6024941 DISCHARGE GRILLE ASSY. (M10, M11)
12	2428510	OVERLOAD PROTECTOR (M10, M11)	67 2561005 EL. COMPO. BOX (M10)
13	2428527	RADIATION SHEET (M10, M11)	67 2561327 EL. COMPO. BOX (HEATER STANDARD) (M11)
14	2560995	HEAT EXCHANGER ASSY. (M10, M11)	68 2561015 SWITCH COVER ASSY. (M10, M11)
15	119849J	FLARE NUT (M10, M11)	69 2532798 FOUR WAY VALVE COIL ASSY. (M10, M11)
16	2158703	VALVE CAP (M10, M11)	70 2561016 THERMISTOR ASSY. (M10, M11)
17	2159232	VALVE CAP (M10, M11)	71 6005471 FIXTURE/ THERMISTOR (M10, M11)
18	NA	COIL/ ELECTRONIC EXP. VALVE ASSY. (M10, M11)	72 NA TERMINAL STRIP MOUNTING PLATE (M10, M11)
19	2561025	COIL/ ELECTRONIC EXP. VALVE (M10, M11)	73 128511J FIXTURE/ THERMISTOR (M10, M11)
20	2561026	COIL/ ELECTRONIC EXP. VALVE (M10, M11)	74 2561008 MOUNTING PLATE (TERMINAL STRIP) (M10, M11)
21	NA	SUCTION PIPE (M10, M11)	75 2561010 WIRE HARNESS ASSY. (COMMUNICATION) (M10, M11)
22	2560998	STOP VALVE MOUNTING PLATE (1) 2R (M10, M11)	76 113783J TAPPING SCREW (M10, M11)
23	2560999	STOP VALVE MOUNTING PLATE (2) (M10, M11)	77 1786749 WASHER (FOR EARTH) (M10, M11)
24	2255541	SINGLE UNION FIXTURE (LIQUID) (M10, M11)	78 099951J EDGE SADDLE (M10, M11)
25	2255589	SINGLE UNION FIXTURE (GAS) (M10, M11)	79 2561012 MOUNTING PLATE (MULTI MODULE PCB) (M10, M11)
26	2255642	SEALING MATERIAL (M10, M11)	80 2561325 PRINTED CIRCUIT BOARD ASSY. (M10)
27	NA	FOUR WAY VALVE ASSY. (M10, M11)	80 2561328 PRINTED CIRCUIT BOARD ASSY. (M11)
28	2255628	SEALING MATERIAL (M10, M11)	81 2561028 WIRE HARNESS ASSY. (FOR COMP.) (M10, M11)
29	099951J	EDGE SADDLE (M10, M11)	82 2561009 TERMINAL STRIP (M10, M11)
30	2455992	BODY/ FOUR WAY VALVE (M10, M11)	83 2371498 TERMINAL BLOCK (M10, M11)
31	112853J	VIBRATION ISOLATOR PUTTY (M10, M11)	84 6025165 PRINTED CIRCUIT BOARD ASSY. (SERVICE) (M10, M11)
32	NA	DISCHARGE PIPE ASSY. (M10, M11)	85 1728464 SPACER (PCB) (M10, M11)
33	161839J	MUFFLER (M10, M11)	86 2115472 SPACER (PCB) (M10, M11)
34	2534983	HIGH PRESSURE SWITCH (M10, M11)	87 2561011 INDICATION LABEL (TERMINAL) (M10, M11)
35	2560996	PUTTY (HEAT RESISTANT) (M10, M11)	88 2561006 EL. COMPO. MOUNTING PLATE ASSY. (M10, M11)
36	NA	HEADER ASSY. (GAS) (M10, M11)	89 2561027 DC FAN MOTOR (M10, M11)
37	2561003	GAS STOP VALVE ASSY. (M10, M11)	90 2561017 WIRE HARNESS ASSY. (COMP. RELAY) (M10, M11)
38	257587J	UNION JOINT (M10, M11)	91 2561018 WIRE HARNESS ASSY. (FUNCTIONAL EARTH) (M10, M11)
39	252012J	UNION JOINT (M10, M11)	92 2561019 WIRE HARNESS ASSY. (FOR OL/HPS) (M10, M11)
40	2561004	THERMISTOR ASSY. (GAS) (M10, M11)	93 2561020 WIRE HARNESS ASSY. (L/N)(TRANSIT) (M10, M11)
41	380120J	FITTING SPRING/ THERMISTOR (M10, M11)	94 2561021 WIRE HARNESS ASSY. (ACS) (M10, M11)
42	4006136	MUFFLER (M10, M11)	95 2561022 WIRE HARNESS ASSY. (SERVICE PCB) (M10, M11)
43	6025154	MUFFLER (M10, M11)	96 2561023 WIRE HARNESS ASSY. (FUNCTIONAL MODULE) (M10, M11)
44	6025189	MUFFLER (M10, M11)	97 2561458 DRAIN PAN HEATER ASSY. (M11)
45	6025190	MUFFLER (M10, M11)	98 2561035 TERMINAL STRIP COVER ASSY. (M10, M11)
46	NA	HEADER ASSY. (LIQUID) (M10, M11)	99 2561320 PRINTED CIRCUIT BOARD ASSY. (M10, M11)
47	2561000	LIQUID STOP VALVE ASSY. (M10, M11)	100 2561014 COVER ASSY. (SERVICE PCB) (M10, M11)
48	2561001	ELECTRONIC EXP. VALVE ASSY. (M10, M11)	101 113783J TAPPING SCREW (M10, M11)
49	2533579	BODY/ ELECTRONIC EXP. VALVE (M10, M11)	
50	060321J	UNION JOINT (M10, M11)	
51	131823J	STRAINER (FOR REF.) (M10, M11)	
52	2255457	MUFFLER (M10, M11)	
53	2561002	THERMISTOR ASSY. (LIQ) (M10, M11)	
54	1303896	FIXTURE/ THERMISTOR (M10, M11)	
55	2533582	PUTTY (M10, M11)	

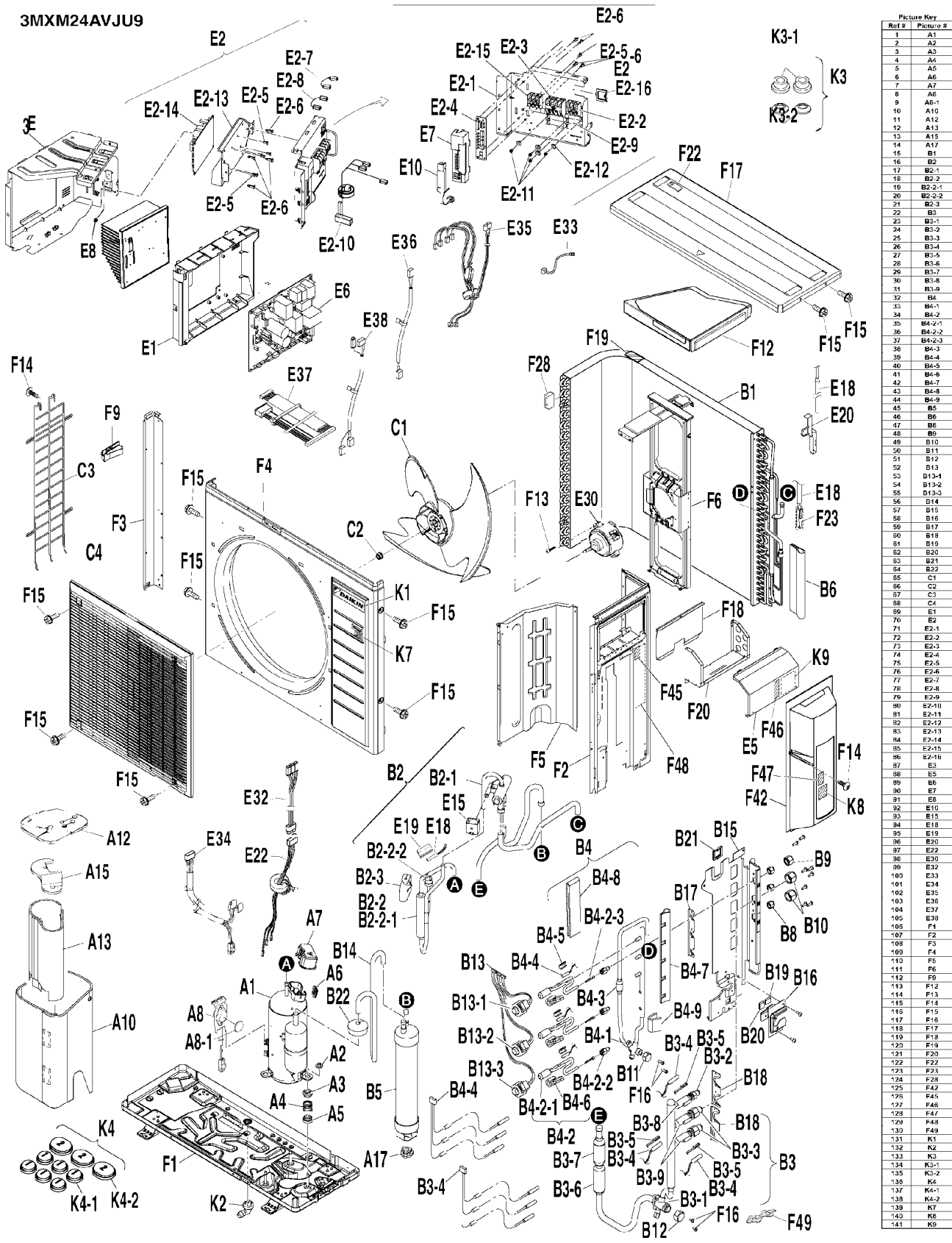
# 2MXT[H]18AVJU9

Ref. Part No:	Ref. Part No:	Description:	Description:
<b>Image 1:</b>			
102	2561315	BOTTOM FRAME ASSY. (M10, M11)	
103	2561034	POLYETHYLENE FOAM ASSY. (M10, M11)	
104	2120405	HEX TAPPING SCREW (3) (M10, M11)	
105	008203J	TRUSS HEAD TAPPING SCREW (M10, M11)	
106	109224J	HEX HEAD TAPPING SCREW (M10, M11)	
107	048017J	PAN HEAD TAPPING SCREW (M10, M11)	
108	2561038	TOP PLATE (M10, M11)	
109	2561037	DRIP PROOF PLATE ASSY. (TERMINAL) (M10, M11)	
110	6026829	SEALING MATERIAL (HEAT EXCH. TOP) (M10, M11)	
111	2561030	RIGHT SIDE PLATE (M10, M11)	
112	2561036	CONDUIT MOUNTING PLATE ASSY. (M10, M11)	
113	2561045	CAUTION LABEL (SUPERCARGO) (M10, M11)	
114	380120J	FITTING SPRING/ THERMISTOR (M10, M11)	
115	1708756	SEALING MATERIAL (M10, M11)	
116	2561039	LEFT SIDE PLATE (M10, M11)	
117	2561040	FRONT PLATE (M10, M11)	
118	6024004	COVER/ STOP VALVE (M10, M11)	
119	NA	CAUTION LABEL (BURN) (M10, M11)	
120	NA	CAUTION LABEL (ELECTRIC SHOCK) (M10, M11)	
121	NA	PRODUCT LIABILITY CAUTION LABEL (M10, M11)	
122	NA	CAUTION LABEL (FLAMMABLE GAS) (M10, M11)	
123	2561861	SIDE CAP(MULTI SERVICE PORT)(S (M10, M11)	
124	2561031	PARTITION PLATE (M10, M11)	
125	2561032	FAN MOTOR STAND ASSY. (M10, M11)	
126	6022835	HANDLE (M10, M11)	
127	2561326	BRAND NAME LABEL (M10, M11)	
128	2561222	JOINT (DRAIN) (M10, M11)	
129	NA	REDUCING JOINT ASSY. (M10, M11)	
130	257712J	GASKET/ REDUCING JOINT (M10, M11)	
131	257709J	GASKET/ REDUCING JOINT (M10, M11)	
132	NA	ACCESSORY SET (M10, M11)	
133	2253709	CAP 1 (DRAIN) (M10, M11)	
134	2253716	CAP 2 (DRAIN) (M10, M11)	
135	2561738	LABEL NAME PLATE (INVERTER R32) (M10, M11)	
136	2561739	ADDITIONAL REFR. CHARGE LABEL (M10, M11)	
137	NA	HANDLING LABEL (1) (M10, M11)	

## Expanded Model Nomenclature

M1 - CTXV07AVJU9
M2 - FTXV09AVJU9
M3 - FTXV12AVJU9
M4 - FTXV15AVJU9
M5 - FTXV18AVJU9
M6 - FTXV24AVJU9
M7 - FTXV30AVJU9
M8 - FTXV36AVJU9
M9 - 2MXM18AVJU9
M10 - 2MXTH18AVJU9
M11 - 2MXT18AVJU9
M12 - 3MXM24AVJU9
M13 - 4MXM36AVJU9

# 3MXM24AVJU9



Ref #	Picture #
1	A1
2	A2
3	A3
4	A6
5	A5
6	A6
7	A7
8	A8
9	A8-1
10	A10
11	A12
12	A13
15	A15
14	A17
16	B1
16	B2
17	B2-1
18	B2-2
19	B2-2-1
20	B2-2-2
21	B2-3
22	B3
23	B3-1
24	B3-2
25	B3-3
26	B3-4
27	B3-5
28	B3-6
29	B3-7
30	B3-8
31	B3-9
32	B4
33	B4-1
34	B4-2
35	B4-2-1
36	B4-2-2
37	B4-2-3
38	B4-3
39	B4-4
40	B4-5
41	B4-6
42	B4-7
43	B4-8
44	B4-9
45	B5
46	B6
47	B8
48	B9
49	B10
50	B11
51	B12
52	B13
53	B13-1
54	B13-2
55	B13-3
56	B14
57	B15
58	B16
59	B17
60	B18
61	B19
62	B20
63	B21
64	B22
65	C1
66	C2
67	C3
68	C4
69	E1
70	E2
71	E2-1
72	E2-2
73	E2-3
74	E2-4
75	E2-5
76	E2-6
77	E2-7
78	E2-8
79	E2-9
80	E2-10
81	E2-11
82	E2-12
83	E2-13
84	E2-14
85	E2-15
86	E2-16
87	E3
88	E3-1
89	E3-2
90	E3-3
91	E3-4
92	E3-5
93	E3-6
94	E3-7
95	E3-8
96	E3-9
97	E3-10
98	E3-11
99	E3-12
100	E3-13
101	E3-14
102	E3-15
103	E3-16
104	E3-17
105	E3-18
106	E3-19
107	F1
108	F2
109	F3
110	F4
111	F5
112	F6
113	F7
114	F8
115	F9
116	F10
117	F11
118	F12
119	F13
120	F14
121	F15
122	F16
123	F17
124	F18
125	F19
126	F20
127	F21
128	F22
129	F23
130	F24
131	F25
132	F26
133	F27
134	F28
135	F29
136	F30
137	F31
138	F32
139	F33
140	F34
141	F35

# 3MXM24AVJU9

Ref. Part No:	Ref. Part No:	Description:	Description:
<b>Image 1:</b>		<b>Image 1:</b>	
1	2561305	COMPRESSOR (M12)	58 2560999 STOP VALVE MOUNTING PLATE (2) (M12)
2	4010410	WASHER (NUT WITH WASHER) (M12)	59 2255565 SINGLE UNION FIXTURE (LIQUID) (M12)
3	096039J	SPRING HOLDER (1) (M12)	60 2255589 SINGLE UNION FIXTURE (GAS) (M12)
4	390208J	MOUNTING SPRING (M12)	61 2255642 SEALING MATERIAL (M12)
5	4016565	SPRING HOLDER (2) (M12)	62 2255628 SEALING MATERIAL (M12)
6	040139J	RUBBER BUSH/ LEAD WIRE (M12)	63 099951J EDGE SADDLE (M12)
7	2425597	TERMINAL COVER (M12)	64 112853J VIBRATION ISOLATOR PUTTY (M12)
8	2428510	OVERLOAD PROTECTOR (M12)	65 2561029 PROPELLER FAN ASSY. (M12)
9	2428527	RADIATION SHEET (M12)	66 847003J LOCK NUT/ FAN (M12)
10	2561043	SOUND INSULATION (OUTER SLEEVE) (M12)	67 6025762 PROTECTION NET (LEFT SIDE) (M12)
11	2561041	SOUND INSULATION (OUTER TOP) (M12)	68 6024941 DISCHARGE GRILLE ASSY. (M12)
12	2561316	SOUND INSULATION (INNER SLEEVE) (M12)	69 2561005 EL. COMPO. BOX (M12)
13	6025183	SOUND INSULATION (INNER TOP) (M12)	70 NA TERMINAL STRIP MOUNTING PLATE (M12)
14	380116J	CUSHION RUBBER/ ACCUMULATOR (M12)	71 2561008 MOUNTING PLATE (TERMINAL STRIP) (M12)
15	2560995	HEAT EXCHANGER ASSY. (M12)	72 2561009 TERMINAL STRIP (M12)
16	NA	FOUR WAY VALVE ASSY. (M12)	73 2371498 TERMINAL BLOCK (M12)
17	2455992	BODY/ FOUR WAY VALVE (M12)	74 6025165 PRINTED CIRCUIT BOARD ASSY. (SERVICE) (M12)
18	NA	DISCHARGE PIPE ASSY. (M12)	
19	161839J	MUFFLER (M12)	75 2115472 SPACER (PCB) (M12)
20	2534983	HIGH PRESSURE SWITCH (M12)	76 1728464 SPACER (PCB) (M12)
21	2560996	PUTTY (HEAT RESISTANT) (M12)	77 2561310 WIRE HARNESS (TERMINAL STRIP) (M12)
22	NA	HEADER ASSY. (GAS) (M12)	78 2561311 WIRE HARNESS (TERMINAL STRIP) (M12)
23	2561003	GAS STOP VALVE ASSY. (M12)	79 2561422 INDICATION LABEL (TERMINAL) (M12)
24	257587J	UNION JOINT (M12)	80 2561312 WIRE HARNESS ASSY. (COMMUNICATION) (M12)
25	252012J	UNION JOINT (M12)	81 113783J TAPPING SCREW (M12)
26	2561309	THERMISTOR ASSY. (GAS) (M12)	82 1786749 WASHER (FOR EARTH) (M12)
27	380120J	FITTING SPRING/ THERMISTOR (M12)	83 2561012 MOUNTING PLATE (MULTI MODULE PCB) (M12)
28	4006136	MUFFLER (M12)	84 2561313 PRINTED CIRCUIT BOARD ASSY. (M12)
29	6025154	MUFFLER (M12)	85 5015337 TERMINAL STRIP (M12)
30	6025189	MUFFLER (M12)	86 099951J EDGE SADDLE (M12)
31	6025190	MUFFLER (M12)	87 2561006 EL. COMPO. MOUNTING PLATE ASSY. (M12)
32	NA	HEADER ASSY. (LIQUID) (M12)	88 2561035 TERMINAL STRIP COVER ASSY. (M12)
33	2561000	LIQUID STOP VALVE ASSY. (M12)	89 2561320 PRINTED CIRCUIT BOARD ASSY. (M12)
34	2561001	ELECTRONIC EXP. VALVE ASSY. (M12)	90 2561014 COVER ASSY. (SERVICE PCB) (M12)
35	2533579	BODY/ ELECTRONIC EXP. VALVE (M12)	91 113783J TAPPING SCREW (M12)
36	060321J	UNION JOINT (M12)	92 2561015 SWITCH COVER ASSY. (M12)
37	131823J	STRAINER (FOR REF.) (M12)	93 2532798 FOUR WAY VALVE COIL ASSY. (M12)
38	2255457	MUFFLER (M12)	94 2561016 THERMISTOR ASSY. (M12)
39	2561308	THERMISTOR ASSY. (LIQ) (M12)	95 6005471 FIXTURE/ THERMISTOR (M12)
40	1303896	FIXTURE/ THERMISTOR (M12)	96 128511J FIXTURE/ THERMISTOR (M12)
41	2533582	PUTTY (M12)	97 2561028 WIRE HARNESS ASSY. (FOR COMP.) (M12)
42	6025158	PUTTY (M12)	98 2561027 DC FAN MOTOR (M12)
43	6025192	PUTTY (M12)	99 2561017 WIRE HARNESS ASSY. (COMP. RELAY) (M12)
44	139706J	PUTTY (M12)	100 2561018 WIRE HARNESS ASSY. (FUNCTIONAL EARTH) (M12)
45	2560997	GAS LIQUID SEPARATOR ASSY. (M12)	
46	2255729	PUTTY (M12)	101 2561019 WIRE HARNESS ASSY. (FOR OL/HPS) (M12)
47	1723546	FLARE NUT (M12)	102 2561020 WIRE HARNESS ASSY. (L/N)(TRANSIT) (M12)
48	119848J	FLARE NUT (M12)	103 2561021 WIRE HARNESS ASSY. (ACS) (M12)
49	119849J	FLARE NUT (M12)	104 2561022 WIRE HARNESS ASSY. (SERVICE PCB) (M12)
50	2158703	VALVE CAP (M12)	105 2561023 WIRE HARNESS ASSY. (FUNCTIONAL MODULE) (M12)
51	2159232	VALVE CAP (M12)	
52	NA	COIL/ ELECTRONIC EXP. VALVE ASSY. (M12)	106 2561315 BOTTOM FRAME ASSY. (M12)
53	2561025	COIL/ ELECTRONIC EXP. VALVE (M12)	107 2561030 RIGHT SIDE PLATE (M12)
54	2561026	COIL/ ELECTRONIC EXP. VALVE (M12)	108 2561039 LEFT SIDE PLATE (M12)
55	2561314	COIL/ ELECTRONIC EXP. VALVE (M12)	109 2561040 FRONT PLATE (M12)
56	NA	SUCTION PIPE (M12)	110 2561031 PARTITION PLATE (M12)
57	2561306	STOP VALVE MOUNTING PLATE (1) 3R (M12)	

# 3MXM24AVJU9

Ref. Part No:	Part No:	Description:	Ref. Part No:	Part No:	Description:
---------------	----------	--------------	---------------	----------	--------------

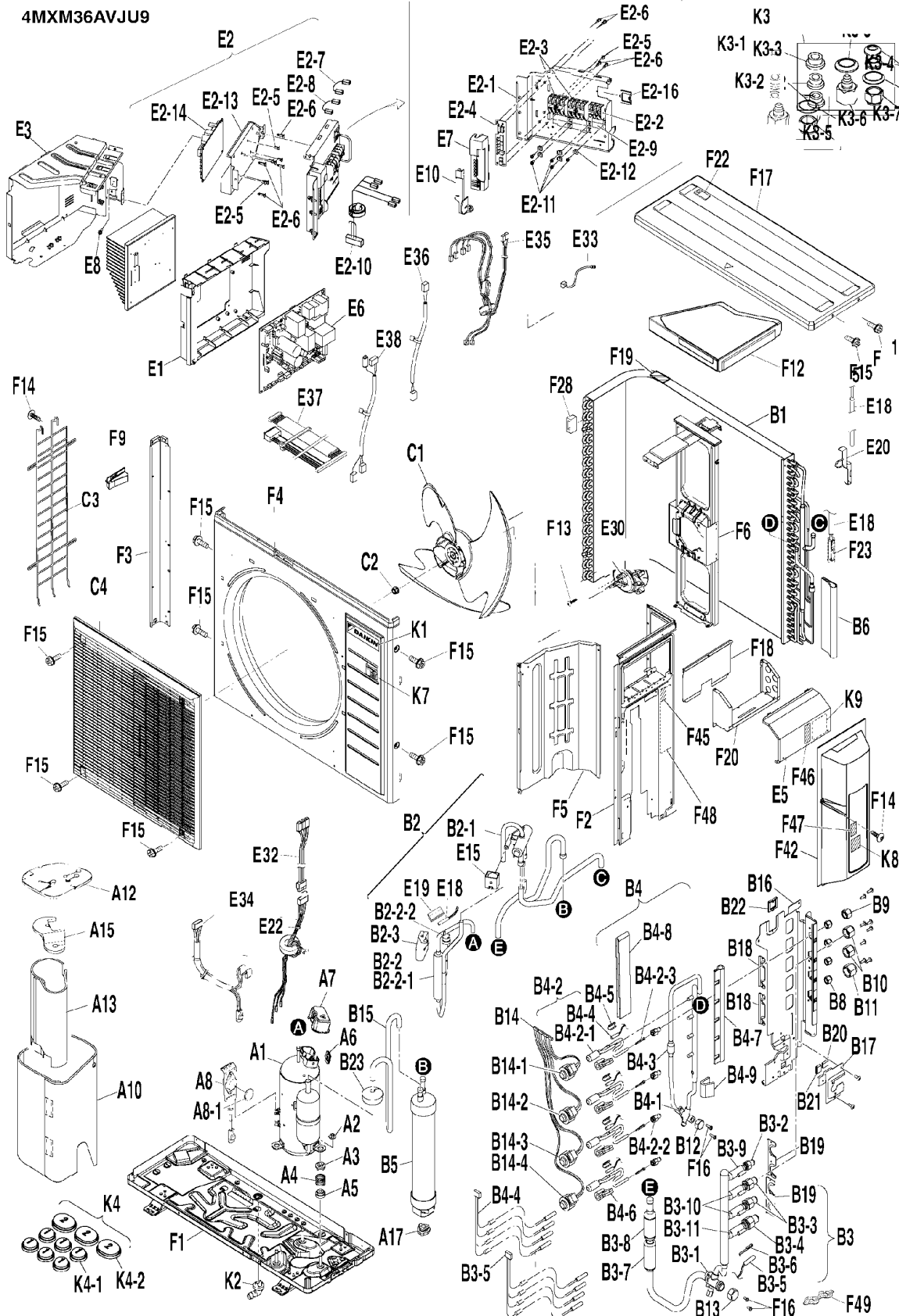
**Image 1:**

111	2561032	FAN MOTOR STAND ASSY. (M12)
112	6022835	HANDLE (M12)
113	2561034	POLYETHYLENE FOAM ASSY. (M12)
114	2120405	HEX TAPPING SCREW (3) (M12)
115	008203J	TRUSS HEAD TAPPING SCREW (M12)
116	109224J	HEX HEAD TAPPING SCREW (M12)
117	048017J	PAN HEAD TAPPING SCREW (M12)
118	2561038	TOP PLATE (M12)
119	2561037	DRIP PROOF PLATE ASSY. (TERMINAL) (M12)
120	6026829	SEALING MATERIAL (HEAT EXCH. TOP) (M12)
121	2561036	CONDUIT MOUNTING PLATE ASSY. (M12)
122	2561045	CAUTION LABEL (SUPERCARGO) (M12)
123	380120J	FITTING SPRING/ THERMISTOR (M12)
124	1708756	SEALING MATERIAL (M12)
125	6024004	COVER/ STOP VALVE (M12)
126	NA	CAUTION LABEL (BURN) (M12)
127	NA	CAUTION LABEL (ELECTRIC SHOCK) (M12)
128	NA	PRODUCT LIABILITY CAUTION LABEL (M12)
129	NA	CAUTION LABEL (FLAMMABLE GAS) (M12)
130	2561861	SIDE CAP(MULTI SERVICE PORT) (M12)
131	2561044	BRAND NAME LABEL (M12)
132	2561222	JOINT (DRAIN) (M12)
133	NA	REDUCER ASSY. (M12)
134	257712J	GASKET/ REDUCING JOINT (M12)
135	257709J	GASKET/ REDUCING JOINT (M12)
136	NA	ACCESSORY SET (M12)
137	2253709	CAP 1 (DRAIN) (M12)
138	2253716	CAP 2 (DRAIN) (M12)
139	2561738	LABEL NAME PLATE (INVERTER R32) (M12)
140	2561739	ADDITIONAL REFR. CHARGE LABEL (M12)
141	NA	HANDLING LABEL (1) (M12)

**Expanded Model Nomenclature**

M1 - CTXV07AVJU9
M2 - FTXV09AVJU9
M3 - FTXV12AVJU9
M4 - FTXV15AVJU9
M5 - FTXV18AVJU9
M6 - FTXV24AVJU9
M7 - FTXV30AVJU9
M8 - FTXV36AVJU9
M9 - 2MXM18AVJU9
M10 - 2MXTH18AVJU9
M11 - 2MXT18AVJU9
M12 - 3MXM24AVJU9
M13 - 4MXM36AVJU9

# 4MXM36AVJU9



Ref #	Picture #
1	A1
2	A2
3	A3
4	A4
5	A5
6	A6
7	A7
8	A8
9	A8-1
10	A10
11	A10-2
12	A13
13	A15
14	A17
15	B1
16	B2
17	B2-1
18	B2-2
19	B2-2-1
20	B2-2-2
21	B2-3
22	B3
23	B3-1
24	B3-2
25	B3-3
26	B3-4
27	B3-5
28	B3-6
29	B3-7
30	B3-8
31	B3-9
32	B3-10
33	B3-11
34	B4
35	B4-1
36	B4-2
37	B4-2-1
38	B4-2-2
39	B4-2-3
40	B4-3
41	B4-4
42	B4-5
43	B4-6
44	B4-7
45	B4-8
46	B4-9
47	B5
48	B6
49	B7
50	B9
51	B10
52	B11
53	B12
54	B13
55	B14
56	B14-1
57	B14-2
58	B14-3
59	B14-4
60	B15
61	B16
62	B17
63	B18
64	B19
65	B20
66	B21
67	B22
68	B23
69	C1
70	C2
71	C3
72	C4
73	E1
74	E2
75	E2-1
76	E2-2
77	E2-3
78	E2-4
79	E2-5
80	E2-6
81	E2-7
82	E2-8
83	E2-9
84	E2-10
85	E2-11
86	E2-12
87	E2-13
88	E2-14
89	E2-15
90	E3
91	E5
92	E6
93	E7
94	E8
95	E10
96	E15
97	E18
98	E19
99	E20
100	E22
101	E30
102	E32
103	E33
104	E34
105	E35
106	E36
107	E37
108	E38
109	F1
110	F2
111	F3
112	F4
113	F5
114	F6
115	F7
116	F8
117	F9
118	F10
119	F11
120	F12
121	F13
122	F14
123	F15
124	F16
125	F17
126	F18
127	F19
128	F20
129	F21
130	F22
131	F23
132	F24
133	F25
134	F26
135	F27
136	F28
137	F29
138	F30
139	F31
140	F32
141	F33
142	F34
143	F35
144	F36
145	F37
146	F38
147	F39
148	F40
149	F41
150	F42
151	F43
152	F44
153	F45
154	F46
155	F47
156	F48
157	F49
158	F50
159	F51
160	F52
161	F53
162	F54
163	F55
164	F56
165	F57
166	F58
167	F59
168	F60
169	F61
170	F62
171	F63
172	F64
173	F65
174	F66
175	F67
176	F68
177	F69
178	F70
179	F71
180	F72
181	F73
182	F74
183	F75
184	F76
185	F77
186	F78
187	F79
188	F80
189	F81
190	F82
191	F83
192	F84
193	F85
194	F86
195	F87
196	F88
197	F89
198	F90
199	F91
200	F92
201	F93
202	F94
203	F95
204	F96
205	F97
206	F98
207	F99
208	F100
209	F101
210	F102
211	F103
212	F104
213	F105
214	F106
215	F107
216	F108
217	F109
218	F110
219	F111
220	F112
221	F113
222	F114
223	F115
224	F116
225	F117
226	F118
227	F119
228	F120
229	F121
230	F122
231	F123
232	F124
233	F125
234	F126
235	F127
236	F128
237	F129
238	F130
239	F131
240	F132
241	F133
242	F134
243	F135
244	F136
245	F137
246	F138
247	F139
248	F140
249	F141
250	F142
251	F143
252	F144
253	F145
254	F146
255	F147
256	F148
257	F149
258	F150
259	F151
260	F152
261	F153
262	F154
263	F155
264	F156
265	F157
266	F158
267	F159
268	F160
269	F161
270	F162
271	F163
272	F164
273	F165
274	F166
275	F167
276	F168
277	F169
278	F170
279	F171
280	F172
281	F173
282	F174
283	F175
284	F176
285	F177
286	F178
287	F179
288	F180
289	F181
290	F182
291	F183
292	F184
293	F185
294	F186
295	F187
296	F188
297	F189
298	F190
299	F191
300	F192
301	F193
302	F194
303	F195
304	F196
305	F197
306	F198
307	F199
308	F200
309	F201
310	F202
311	F203
312	F204
313	F205
314	F206
315	F207
316	F208
317	F209
318	F210
319	F211
320	F212
321	F213
322	F214
323	F215
324	F216
325	F217
326	F218
327	F219
328	F220
329	F221
330	F222
331	F223
332	F224
333	F225
334	F226
335	F227
336	F228
337	F229
338	F230
339	F231
340	F232
341	F233
342	F234
343	F235
344	F236
345	F237
346	F238
347	F239
348	F240
349	F241
350	F242
351	F243
352	F244
353	F245
354	F246
355	F247

# 4MXM36AVJU9

Ref. Part No:	Ref. Part No:	Description:	Description:	
<b>Image 1:</b>		<b>Image 1:</b>		
1	2561305	COMPRESSOR (M13)	58 2561314	COIL/ ELECTRONIC EXP. VALVE (M13)
2	4010410	WASHER (NUT WITH WASHER) (M13)	59 2561324	COIL/ ELECTRONIC EXP. VALVE (M13)
3	096039J	SPRING HOLDER (1) (M13)	60 NA	SUCTION PIPE (M13)
4	390208J	MOUNTING SPRING (M13)	61 2561317	STOP VALVE MOUNTING PLATE (1) 4R (M13)
5	4016565	SPRING HOLDER (2) (M13)	62 2560999	STOP VALVE MOUNTING PLATE (2) (M13)
6	040139J	RUBBER BUSH/ LEAD WIRE (M13)	63 2255541	SINGLE UNION FIXTURE (LIQUID) (M13)
7	2425597	TERMINAL COVER (M13)	64 2255589	SINGLE UNION FIXTURE (GAS) (M13)
8	2428510	OVERLOAD PROTECTOR (M13)	65 2255642	SEALING MATERIAL (M13)
9	2428527	RADIATION SHEET (M13)	66 2255628	SEALING MATERIAL (M13)
10	2561043	SOUND INSULATION (OUTER SLEEVE) (M13)	67 099951J	EDGE SADDLE (M13)
11	2561041	SOUND INSULATION (OUTER TOP) (M13)	68 112853J	VIBRATION ISOLATOR PUTTY (M13)
12	2561316	SOUND INSULATION (INNER SLEEVE) (M13)	69 2561029	PROPELLER FAN ASSY. (M13)
13	6025183	SOUND INSULATION (INNER TOP) (M13)	70 847003J	LOCK NUT/ FAN (M13)
14	380116J	CUSHION RUBBER/ ACCUMULATOR (M13)	71 6025762	PROTECTION NET (LEFT SIDE) (M13)
15	2560995	HEAT EXCHANGER ASSY. (M13)	72 6024941	DISCHARGE GRILLE ASSY. (M13)
16	NA	FOUR WAY VALVE ASSY. (M13)	73 2561005	EL. COMPO. BOX (M13)
17	2455992	BODY/ FOUR WAY VALVE (M13)	74 NA	TERMINAL STRIP MOUNTING PLATE (M13)
18	NA	DISCHARGE PIPE ASSY. (M13)	75 2561008	MOUNTING PLATE (TERMINAL STRIP) (M13)
19	161839J	MUFFLER (M13)	76 2561009	TERMINAL STRIP (M13)
20	2534983	HIGH PRESSURE SWITCH (M13)	77 2371498	TERMINAL BLOCK (M13)
21	2560996	PUTTY (HEAT RESISTANT) (M13)	78 6025165	PRINTED CIRCUIT BOARD ASSY. (SERVICE) (M13)
22	NA	HEADER ASSY. (GAS) (M13)	79 2115472	SPACER (PCB) (M13)
23	2561003	GAS STOP VALVE ASSY. (M13)	80 1728464	SPACER (PCB) (M13)
24	257587J	UNION JOINT (M13)	81 2561310	WIRE HARNESS (TERMINAL STRIP) (M13)
25	252012J	UNION JOINT (M13)	82 2561311	WIRE HARNESS (TERMINAL STRIP) (M13)
26	257588J	UNION JOINT (M13)	83 2561322	INDICATION LABEL (TERMINAL) (M13)
27	2561319	THERMISTOR ASSY. (GAS) (M13)	84 2561321	WIRE HARNESS ASSY. (COMMUNICATION) (M13)
28	380120J	FITTING SPRING/ THERMISTOR (M13)	85 113783J	TAPPING SCREW (M13)
29	4006136	MUFFLER (M13)	86 1786749	WASHER (FOR EARTH) (M13)
30	6025154	MUFFLER (M13)	87 2561012	MOUNTING PLATE (MULTI MODULE PCB) (M13)
31	6025189	MUFFLER (M13)	88 2561323	PRINTED CIRCUIT BOARD ASSY. (M13)
32	6025190	MUFFLER (M13)	89 099951J	EDGE SADDLE (M13)
33	6025201	MUFFLER (M13)	90 2561006	EL. COMPO. MOUNTING PLATE ASSY. (M13)
34	NA	HEADER ASSY. (LIQUID) (M13)	91 2561035	TERMINAL STRIP COVER ASSY. (M13)
35	2561000	LIQUID STOP VALVE ASSY. (M13)	92 2561320	PRINTED CIRCUIT BOARD ASSY. (M13)
36	2561001	ELECTRONIC EXP. VALVE ASSY. (M13)	93 2561014	COVER ASSY. (SERVICE PCB) (M13)
37	2533579	BODY/ ELECTRONIC EXP. VALVE (M13)	94 113783J	TAPPING SCREW (M13)
38	060321J	UNION JOINT (M13)	95 2561015	SWITCH COVER ASSY. (M13)
39	131823J	STRAINER (FOR REF.) (M13)	96 2532798	FOUR WAY VALVE COIL ASSY. (M13)
40	2255457	MUFFLER (M13)	97 2561016	THERMISTOR ASSY. (M13)
41	2561318	THERMISTOR ASSY. (LIQ) (M13)	98 6005471	FIXTURE/ THERMISTOR (M13)
42	1303896	FIXTURE/ THERMISTOR (M13)	99 128511J	FIXTURE/ THERMISTOR (M13)
43	2533582	PUTTY (M13)	100 2561028	WIRE HARNESS ASSY. (FOR COMP.) (M13)
44	6025158	PUTTY (M13)	101 2561027	DC FAN MOTOR (M13)
45	6025203	PUTTY (LIQUID HEADER) (M13)	102 2561017	WIRE HARNESS ASSY. (COMP. RELAY) (M13)
46	139706J	PUTTY (M13)	103 2561018	WIRE HARNESS ASSY. (FUNCTIONAL EARTH) (M13)
47	2560997	GAS LIQUID SEPARATOR ASSY. (M13)	104 2561019	WIRE HARNESS ASSY. (FOR OL/HPS) (M13)
48	2255729	PUTTY (M13)	105 2561020	WIRE HARNESS ASSY. (L/N)(TRANSIT) (M13)
49	1723546	FLARE NUT (M13)	106 2561021	WIRE HARNESS ASSY. (ACS) (M13)
50	119848J	FLARE NUT (M13)	107 2561022	WIRE HARNESS ASSY. (SERVICE PCB) (M13)
51	119849J	FLARE NUT (M13)	108 2561023	WIRE HARNESS ASSY. (FUNCTIONAL MODULE) (M13)
52	119850J	FLARE NUT (M13)	109 2561315	BOTTOM FRAME ASSY. (M13)
53	2158703	VALVE CAP (M13)	110 2561030	RIGHT SIDE PLATE (M13)
54	2159232	VALVE CAP (M13)		
55	NA	COIL/ ELECTRONIC EXP. VALVE ASSY. (M13)		
56	2561025	COIL/ ELECTRONIC EXP. VALVE (M13)		
57	2561026	COIL/ ELECTRONIC EXP. VALVE (M13)		

# 4MXM36AVJU9

Ref. Part No:	Part No:	Description:	Ref. Part No:	Part No:	Description:
---------------	----------	--------------	---------------	----------	--------------

**Image 1:**

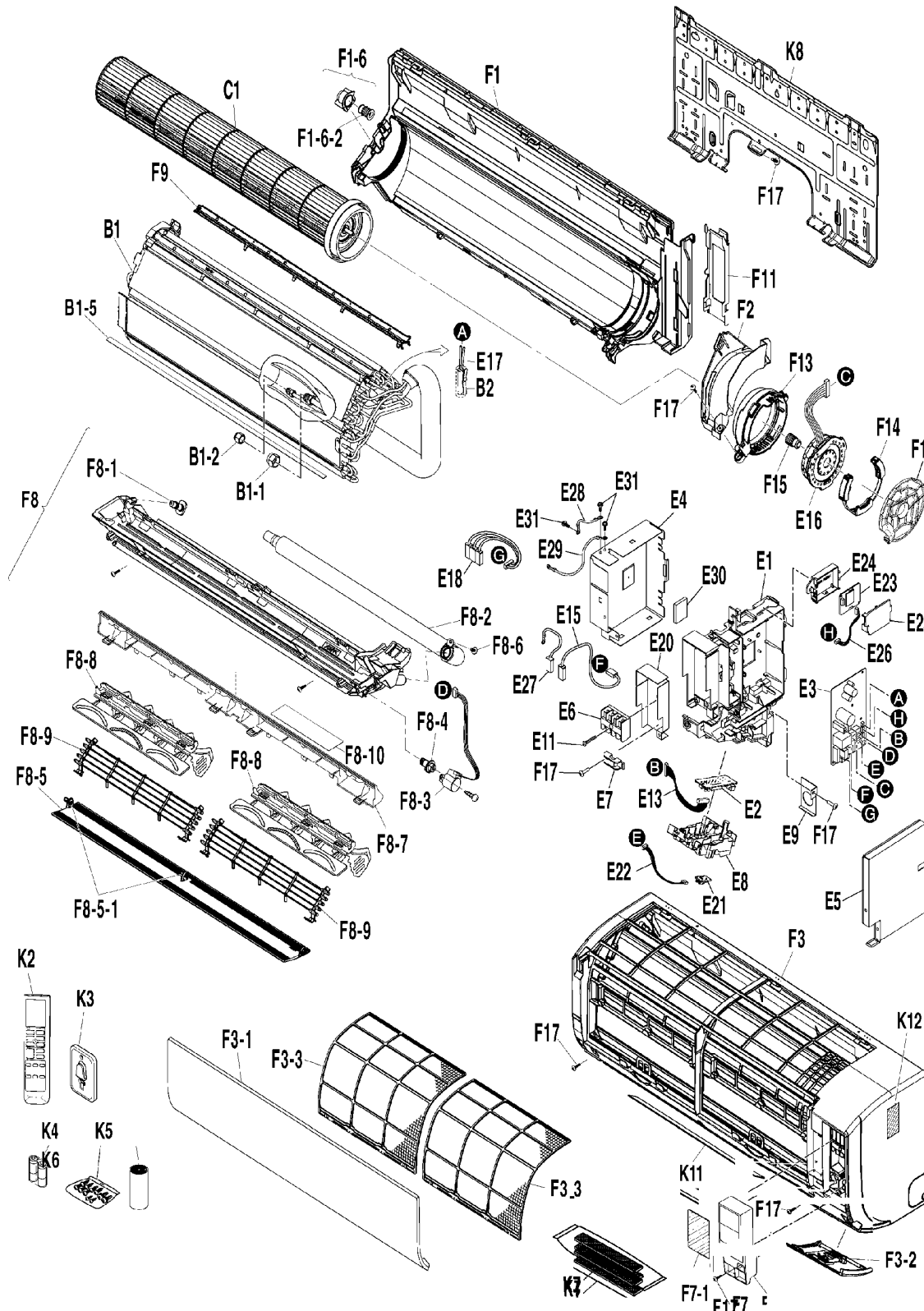
111	2561039	LEFT SIDE PLATE (M13)
112	2561040	FRONT PLATE (M13)
113	2561031	PARTITION PLATE (M13)
114	2561032	FAN MOTOR STAND ASSY. (M13)
115	6022835	HANDLE (M13)
116	2561034	POLYETHYLENE FOAM ASSY. (M13)
117	2120405	HEX. TAPPING SCREW (3) (M13)
118	008203J	TRUSS HEAD TAPPING SCREW (M13)
119	109224J	HEX. HEAD TAPPING SCREW (M13)
120	048017J	PAN HEAD TAPPING SCREW (M13)
121	2561038	TOP PLATE (M13)
122	2561037	DRIP PROOF PLATE ASSY. (TERMINAL) (M13)
123	6026829	SEALING MATERIAL (HEAT EXCH. TOP) (M13)
124	2561036	CONDUIT MOUNTING PLATE ASSY. (M13)
125	2561045	CAUTION LABEL (SUPERCARGO) (M13)
126	380120J	FITTING SPRING/ THERMISTOR (M13)
127	1708756	SEALING MATERIAL (M13)
128	6024004	COVER/ STOP VALVE (M13)
129	NA	CAUTION LABEL (BURN) (M13)
130	NA	CAUTION LABEL (ELECTRIC SHOCK) (M13)
131	NA	PRODUCT LIABILITY CAUTION LABEL (M13)
132	NA	CAUTION LABEL (FLAMMABLE GAS) (M13)
133	2561861	SIDE CAP(MULTI SERVICE PORT)(S) (M13)
134	2561044	BRAND NAME LABEL (M13)
135	2561222	JOINT (DRAIN) (M13)
136	NA	REDUCER ASSY. (M13)
137	257553J	GASKET/ REDUCING JOINT (M13)
138	257712J	GASKET/ REDUCING JOINT (M13)
139	257555J	GASKET/ REDUCING JOINT (M13)
140	257709J	GASKET/ REDUCING JOINT (M13)
141	257503J	REDUCING JOINT (M13)
142	257511	FLARE GASKET (M13)
143	119848J	FLARE NUT (M13)
144	NA	ACCESSORY SET (M13)
145	2253709	CAP 1 (DRAIN) (M13)
146	2253716	CAP 2 (DRAIN) (M13)
147	2561738	LABEL NAME PLATE (INVERTER R32) (M13)
148	2561739	ADDITIONAL REFR. CHARGE LABEL (M13)
149	NA	HANDLING LABEL (1) (M13)

**Expanded Model Nomenclature**

- |                    |
|--------------------|
| M1 - CTXV07AVJU9   |
| M2 - FTXV09AVJU9   |
| M3 - FTXV12AVJU9   |
| M4 - FTXV15AVJU9   |
| M5 - FTXV18AVJU9   |
| M6 - FTXV24AVJU9   |
| M7 - FTXV30AVJU9   |
| M8 - FTXV36AVJU9   |
| M9 - 2MXM18AVJU9   |
| M10 - 2MXTH18AVJU9 |
| M11 - 2MXT18AVJU9  |
| M12 - 3MXM24AVJU9  |
| M13 - 4MXM36AVJU9  |

# CTXV07AVJU9

CTXV07AVJU9



Picture Key

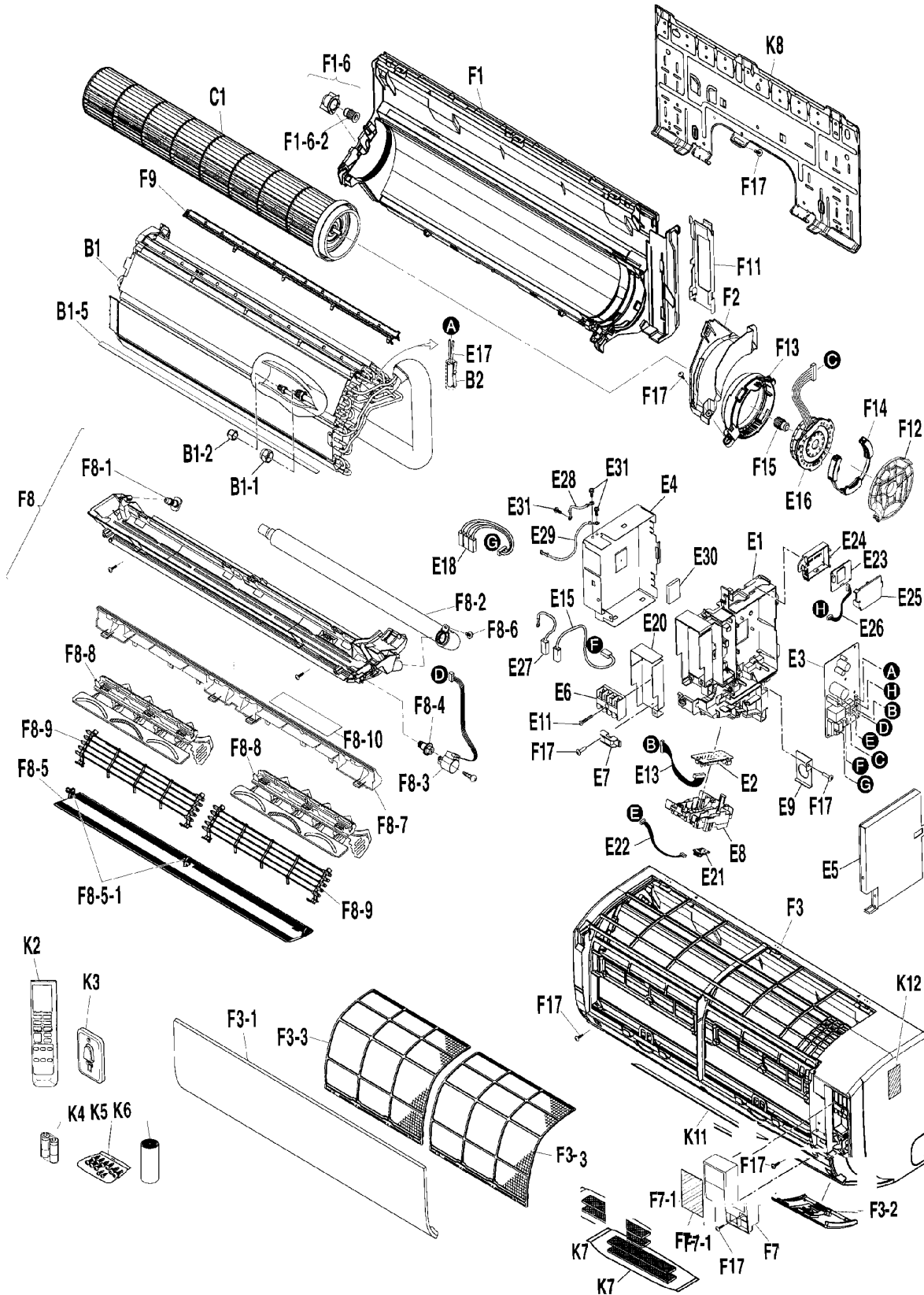
Ref #	Picture #
1	B1
2	B1-1
3	B1-2
4	B1-5
5	B2
6	C1
7	E1
8	E2
9	E3
10	E4
11	E5
12	E6
13	E7
14	E8
15	E9
16	E11
17	E13
18	E15
19	E16
20	E17
21	E18
22	E20
23	E21
24	E22
25	E23
26	E24
27	E25
28	E26
29	E27
30	E28
31	E29
32	E30
33	E31
34	F1
35	F1-6
36	F1-6-2
37	F2
38	F3
39	F3-1
40	F3-2
41	F3-3
42	F7
43	F7-1
44	F8
45	F8-1
46	F8-2
47	F8-3
48	F8-4
49	F8-5
50	F8-5-1
51	F8-6
52	F8-7
53	F8-8
54	F8-9
55	F8-10
56	F9
57	F11
58	F12
59	F13
60	F14
61	F15
62	F17
63	K2
64	K3
65	K4
66	K5
67	K6
68	K7
69	K8
70	K11
71	K12

# CTXV07AVJU9

Ref. Part No: No:	Description:	Ref. Part No: No:	Description:													
<b>Image 1:</b>		<b>Image 1:</b>														
1	2561429 HEAT EXCHANGER ASSY. (M1)	56	2561452 SEALING PLATE (TOP) (M1)													
2	119848J FLARE NUT (M1)	57	6024489 PIPING FIXTURE (M1)													
3	1723546 FLARE NUT (M1)	58	2561441 MOTOR COVER (CAP) ASSY. (M1)													
4	2538650 SEALING PLATE (HEAT EXCHANGER) (M1)	59	2561440 MOTOR COVER ASSY. (M1)													
5	380120J FITTING SPRING/ THERMISTOR (M1)	60	4023758 RUBBER GROMMET (M1)													
6	2561707 CROSS FLOW FAN ASSY. (M1)	61	2540555 FAN BEARING VIBRATION ABSORBER (M1)													
7	2561430 EL. COMPO. BOX (WITH SEALING MATERIAL) (M1)	62	121650J TRUSS HEAD TAPPING SCREW (M1)													
8	2561391 PRINTED CIRCUIT BOARD ASSY. (M1)	63	2561958 REMOTE CONTROLLER ASSY. (M1)													
9	2561937 PRINTED CIRCUIT BOARD ASSY. (M1)	64	183432J HOLDER/ REMOTE CONTROLLER (M1)													
10	2561431 SHIELD PLATE (1) (M1)	65	2539271 BATTERY KIT (M1)													
11	2561453 SHIELD PLATE (2) (M1)	66	4020169 SCREW SET (M1)													
12	2531967 TERMINAL STRIP (M1)	67	081957J HEAT INSULATION TAPE (M1)													
13	0812847 WIRE CLAMP (M1)	68	4017130 PHOTOCATALYST FILTER ASSY. (M1)													
14	2561434 INDICATION LAMP COVER (M1)	69	7900111 INSTALLATION PLATE (M1)													
15	2561398 CONDUIT MOUNTING PLATE (M1)	70	NA CAUTION LABEL (M1)													
16	174888J PAN HEAD TAPPING SCREW (M1)	71	NA PRODUCT LIABILITY CAUTION LABEL (M1)													
17	2561392 WIRE HARNESS (DISPLAY) (M1)	<b>Expanded Model Nomenclature</b>														
18	2561388 EARTH WIRE (FG) (M1)	<table border="1"> <tr><td>M1 - CTXV07AVJU9</td></tr> <tr><td>M2 - FTXV09AVJU9</td></tr> <tr><td>M3 - FTXV12AVJU9</td></tr> <tr><td>M4 - FTXV15AVJU9</td></tr> <tr><td>M5 - FTXV18AVJU9</td></tr> <tr><td>M6 - FTXV24AVJU9</td></tr> <tr><td>M7 - FTXV30AVJU9</td></tr> <tr><td>M8 - FTXV36AVJU9</td></tr> <tr><td>M9 - 2MXM18AVJU9</td></tr> <tr><td>M10 - 2MXTH18AVJU9</td></tr> <tr><td>M11 - 2MXT18AVJU9</td></tr> <tr><td>M12 - 3MXM24AVJU9</td></tr> <tr><td>M13 - 4MXM36AVJU9</td></tr> </table>		M1 - CTXV07AVJU9	M2 - FTXV09AVJU9	M3 - FTXV12AVJU9	M4 - FTXV15AVJU9	M5 - FTXV18AVJU9	M6 - FTXV24AVJU9	M7 - FTXV30AVJU9	M8 - FTXV36AVJU9	M9 - 2MXM18AVJU9	M10 - 2MXTH18AVJU9	M11 - 2MXT18AVJU9	M12 - 3MXM24AVJU9	M13 - 4MXM36AVJU9
M1 - CTXV07AVJU9																
M2 - FTXV09AVJU9																
M3 - FTXV12AVJU9																
M4 - FTXV15AVJU9																
M5 - FTXV18AVJU9																
M6 - FTXV24AVJU9																
M7 - FTXV30AVJU9																
M8 - FTXV36AVJU9																
M9 - 2MXM18AVJU9																
M10 - 2MXTH18AVJU9																
M11 - 2MXT18AVJU9																
M12 - 3MXM24AVJU9																
M13 - 4MXM36AVJU9																
19	2561439 FAN MOTOR STATOR (STD) (M1)															
20	2561438 THERMISTOR ASSY. (M1)															
21	2561432 WIRE HARNESS (POWER) (M1)															
22	2561433 SHIELD PLATE (TERMINAL) (M1)															
23	2560606 HUMIDITY SENSOR (M1)															
24	2561435 WIRE HARNESS (HUMIDITY SENSOR) (M1)															
25	2561423 FINISHED PRODUCTS ASSY. (WLAN MODULE) (M1)															
26	2561424 ELECTRIC BOX FIXTURE (WIRELESS) (M1)															
27	2561425 COVER (WIRELESS ADAPTER) (M1)															
28	2561477 WIRE HARNESS (WIRELESS ADAPTER) (M1)															
29	2561395 EARTH WIRE (TERMINAL STRIP) (M1)															
30	2561437 EARTH WIRE (HEAT EXCHANGER) (M1)															
31	2561397 EARTH WIRE (HEAT EXCHANGER) (M1)															
32	2559803 INSULATION SHEET (RADIATION) (M1)															
33	2374334 PAN HEAD MACHINE SCREW S-TIGHT (M1)															
34	2561442 BOTTOM FRAME ASSY. (M1)															
35	7900101 FAN BEARING ASSY. (M1)															
36	156867J VIBRATION ABSORBER/ FAN BEARING (M1)															
37	2561454 RIGHT SIDE PANEL ASSY. (M1)															
38	2561448 FRONT GRILLE ASSY. (M1)															
39	2561449 PANEL (M1)															
40	2561450 CONTROL PANEL ASSY. (M1)															
41	2561451 AIR FILTER (M1)															
42	2564323 SERVICE COVER ASSY. (M1)															
43	NA CAUTION LABEL (ELECTRIC SHOCK) (M1)															
44	2564319 DRAIN PAN ASSY. (MANUAL) (M1)															
45	6028456 DRAIN PLUG (M1)															
46	2547544 DRAIN HOSE (M1)															
47	2561444 STEPPING MOTOR (M1)															
48	2561445 SHAFT (HORI.) (M1)															
49	2561446 DISCH. GRILLE HOR. BLADE ASSY. (M1)															
50	2561412 SHAFT (M1)															
51	170429J TAPPING SCREW (M1)															
52	4016180 DRAIN PAN STABILIZER (M1)															
53	4015987 DISCH. GRILLE VERT. BLADE (MANUAL) (M1)															
54	4022655 FAN GUARD ASSY. (M1)															
55	2564320 CAUTION LABEL (DRAIN PAN) (M1)															

# FTXV[09,12]AVJU9

FTXV09AVJU9 / FTXV12AVJU9



Picture Key

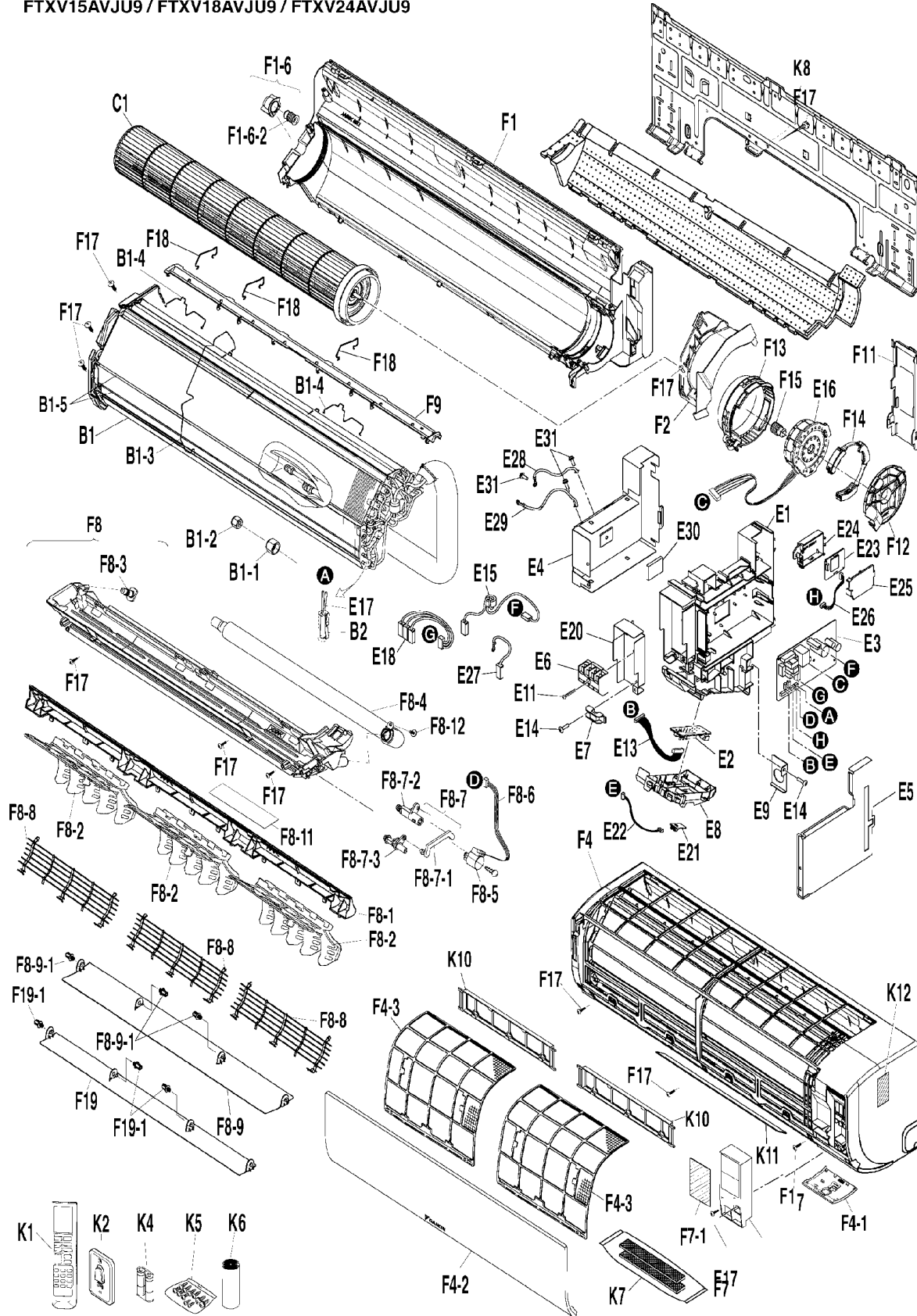
Ref #	Picture #
1	B1
2	B1-1
3	B1-2
4	B1-5
5	B2
6	C1
7	E1
8	E11
9	E13
10	E15
11	E16
12	E17
13	E18
14	E2
15	E20
16	E21
17	E22
18	E23
19	E24
20	E25
21	E26
22	E27
23	E28
24	E29
25	E3
26	E30
27	E31
28	E4
29	E5
30	E6
31	E7
32	E8
33	E9
34	F1
35	F11
36	F12
37	F13
38	F14
39	F15
40	F1-6
41	F1-6-2
42	F17
43	F2
44	F3
45	F3-1
46	F3-2
47	F3-3
48	F7
49	F7-1
50	F8
51	F8-1
52	F8-10
53	F8-2
54	F8-3
55	F8-4
56	F8-5
57	F8-5-1
58	F8-6
59	F8-7
60	F8-8
61	F8-9
62	F9
63	K11
64	K12
65	K2
66	K3
67	K4
68	K5
69	K6
70	K7
71	K8

# FTXV[09,12]AVJU9

Ref. Part No: No:	Description:	Ref. Part No: No:	Description:													
<b>Image 1:</b>		<b>Image 1:</b>														
1	2561429 HEAT EXCHANGER ASSY. (M2, M3)	54	2561444 STEPPING MOTOR (M2, M3)													
2	119848J FLARE NUT (M2, M3)	55	2561445 SHAFT (HORI.) (M2, M3)													
3	1723546 FLARE NUT (M2, M3)	56	2561446 DISCH. GRILLE HOR. BLADE ASSY. (M2, M3)													
4	2538650 SEALING PLATE (HEAT EXCHANGER) (M2, M3)	57	2561412 SHAFT (M2, M3)													
5	380120J FITTING SPRING/ THERMISTOR (M2, M3)	58	170429J TAPPING SCREW (M2, M3)													
6	2561707 CROSS FLOW FAN ASSY. (M2, M3)	59	4016180 DRAIN PAN STABILIZER (M2, M3)													
7	2561430 EL. COMPO. BOX (WITH SEALING MATERIAL) (M2, M3)	60	4015987 DISCH. GRILLE VERT. BLADE (MANUAL) (M2, M3)													
8	174888J PAN HEAD TAPPING SCREW (M2, M3)	61	4022655 FAN GUARD ASSY. (M2, M3)													
9	2561392 WIRE HARNESS (DISPLAY) (M2, M3)	62	2561452 SEALING PLATE (TOP) (M2, M3)													
10	2561388 EARTH WIRE (FG) (M2, M3)	63	NA CAUTION LABEL (M2, M3)													
11	2561439 FAN MOTOR STATOR (STD) (M2, M3)	64	NA PRODUCT LIABILITY CAUTION LABEL (M2, M3)													
12	2561438 THERMISTOR ASSY. (M2, M3)	65	2561958 REMOTE CONTROLLER ASSY. (M2, M3)													
13	2561432 WIRE HARNESS (POWER) (M2, M3)	66	183432J HOLDER/ REMOTE CONTROLLER (M2, M3)													
14	2561391 PRINTED CIRCUIT BOARD ASSY. (M2, M3)	67	2539271 BATTERY KIT (M2, M3)													
15	2561433 SHIELD PLATE (TERMINAL) (M2, M3)	68	4020169 SCREW SET (M2, M3)													
16	2560606 HUMIDITY SENSOR (M2, M3)	69	081957J HEAT INSULATION TAPE (M2, M3)													
17	2561435 WIRE HARNESS (HUMIDITY SENSOR) (M2, M3)	70	4017130 PHOTOCATALYST FILTER ASSY. (M2, M3)													
18	2561423 FINISHED PRODUCTS ASSY. (WLAN MODULE) (M2, M3)	71	7900111 INSTALLATION PLATE (M2, M3)													
19	2561424 ELECTRIC BOX FIXTURE (WIRELESS) (M2, M3)	<b>Expanded Model Nomenclature</b>														
20	2561425 COVER (WIRELESS ADAPTER) (M2, M3)	<table border="1"> <tr><td>M1 - CTXV07AVJU9</td></tr> <tr><td>M2 - FTXV09AVJU9</td></tr> <tr><td>M3 - FTXV12AVJU9</td></tr> <tr><td>M4 - FTXV15AVJU9</td></tr> <tr><td>M5 - FTXV18AVJU9</td></tr> <tr><td>M6 - FTXV24AVJU9</td></tr> <tr><td>M7 - FTXV30AVJU9</td></tr> <tr><td>M8 - FTXV36AVJU9</td></tr> <tr><td>M9 - 2MXM18AVJU9</td></tr> <tr><td>M10 - 2MXTH18AVJU9</td></tr> <tr><td>M11 - 2MXT18AVJU9</td></tr> <tr><td>M12 - 3MXM24AVJU9</td></tr> <tr><td>M13 - 4MXM36AVJU9</td></tr> </table>		M1 - CTXV07AVJU9	M2 - FTXV09AVJU9	M3 - FTXV12AVJU9	M4 - FTXV15AVJU9	M5 - FTXV18AVJU9	M6 - FTXV24AVJU9	M7 - FTXV30AVJU9	M8 - FTXV36AVJU9	M9 - 2MXM18AVJU9	M10 - 2MXTH18AVJU9	M11 - 2MXT18AVJU9	M12 - 3MXM24AVJU9	M13 - 4MXM36AVJU9
M1 - CTXV07AVJU9																
M2 - FTXV09AVJU9																
M3 - FTXV12AVJU9																
M4 - FTXV15AVJU9																
M5 - FTXV18AVJU9																
M6 - FTXV24AVJU9																
M7 - FTXV30AVJU9																
M8 - FTXV36AVJU9																
M9 - 2MXM18AVJU9																
M10 - 2MXTH18AVJU9																
M11 - 2MXT18AVJU9																
M12 - 3MXM24AVJU9																
M13 - 4MXM36AVJU9																
21	2561477 WIRE HARNESS (WIRELESS ADAPTER) (M2, M3)															
22	2561395 EARTH WIRE (TERMINAL STRIP) (M2, M3)															
23	2561437 EARTH WIRE (HEAT EXCHANGER) (M2, M3)															
24	2561397 EARTH WIRE (HEAT EXCHANGER) (M2, M3)															
25	2561935 PRINTED CIRCUIT BOARD ASSY. (M2)															
25	2561936 PRINTED CIRCUIT BOARD ASSY. (M3)															
26	2559803 INSULATION SHEET (RADIATION) (M2, M3)															
27	2374334 PAN HEAD MACHINE SCREW S-TIGHT (M2, M3)															
28	2561431 SHIELD PLATE (1) (M2, M3)															
29	2561453 SHIELD PLATE (2) (M2, M3)															
30	2531967 TERMINAL STRIP (M2, M3)															
31	0812847 WIRE CLAMP (M2, M3)															
32	2561434 INDICATION LAMP COVER (M2, M3)															
33	2561398 CONDUIT MOUNTING PLATE (M2, M3)															
34	2561442 BOTTOM FRAME ASSY. (M2, M3)															
35	6024489 PIPING FIXTURE (M2, M3)															
36	2561441 MOTOR COVER (CAP) ASSY. (M2, M3)															
37	2561440 MOTOR COVER ASSY. (M2, M3)															
38	4023758 RUBBER GROMMET (M2, M3)															
39	2540555 FAN BEARING VIBRATION ABSORBER (M2, M3)															
40	7900101 FAN BEARING ASSY. (M2, M3)															
41	156867J VIBRATION ABSORBER/ FAN BEARING (M2, M3)															
42	121650J TRUSS HEAD TAPPING SCREW (M2, M3)															
43	2561454 RIGHT SIDE PANEL ASSY. (M2, M3)															
44	2561448 FRONT GRILLE ASSY. (M2, M3)															
45	2561449 PANEL (M2, M3)															
46	2561450 CONTROL PANEL ASSY. (M2, M3)															
47	2561451 AIR FILTER (M2, M3)															
48	2564323 SERVICE COVER ASSY. (M2, M3)															
49	NA CAUTION LABEL (ELECTRIC SHOCK) (M2, M3)															
50	2564319 DRAIN PAN ASSY. (MANUAL) (M2, M3)															
51	6028456 DRAIN PLUG (M2, M3)															
52	2564320 CAUTION LABEL (DRAIN PAN) (M2, M3)															
53	2547544 DRAIN HOSE (M2, M3)															

# FTXV[15,18,24]AVJU9

FTXV15AVJU9 / FTXV18AVJU9 / FTXV24AVJU9



Picture Key

Ref #	Picture #
1	B1
2	B1-1
3	B1-2
4	B1-3
5	B1-4
6	B1-5
7	B2
8	C1
9	E1
10	E11
11	E13
12	E15
13	E16
14	E17
15	E18
16	E2
17	E20
18	E21
19	E22
20	E23
21	E24
22	E25
23	E26
24	E27
25	E28
26	E29
27	E3
28	E30
29	E31
30	E4
31	E5
32	E6
33	E7
34	E8
35	E9
36	F1
37	F11
38	F12
39	F13
40	F14
41	F15
42	F1-6
43	F1-6-2
44	F17
45	F18
46	F19
47	F19-1
48	F2
49	F4
50	F4-1
51	F4-2
52	F4-3
53	F7
54	F7-1
55	F8
56	F8-1
57	F8-11
58	F8-12
59	F8-2
60	F8-3
61	F8-4
62	F8-5
63	F8-6
64	F8-7
65	F8-7-1
66	F8-7-2
67	F8-7-3
68	F8-8
69	F8-9
70	F8-9-1
71	F9
72	K1
73	K10
74	K11
75	K12
76	K2
77	K4
78	K5
79	K6
80	K7
81	K8

# FTXV[15,18,24]AVJU9

Ref. Part No:	Ref. Part No:	Description:	Description:
<b>Image 1:</b>		<b>Image 1:</b>	
1	2561384	HEAT EXCHANGER ASSY. (M4, M5)	45 2561416 WIRE SPRING (TOP SEALING PLATE) (M4, M5, M6)
1	2561421	HEAT EXCHANGER ASSY. (M6)	46 2561411 DISCH. GRILLE HOR. BLADE (2) ASSY. (M4, M5, M6)
2	119849J	FLARE NUT (M4, M5)	47 2561412 SHAFT (M4, M5, M6)
2	119850J	FLARE NUT (M6)	48 2561418 RIGHT SIDE PANEL ASSY. (M4, M5, M6)
3	1723546	FLARE NUT (M4, M5, M6)	49 2561413 FRONT GRILLE ASSY. (M4, M5, M6)
4	4016485	WIRE SPRING (M4, M5, M6)	50 2561414 CONTROL PANEL ASSY (M4, M5, M6)
5	7900113	WIRE SPRING (M4, M5, M6)	51 2561415 PANEL (LOW) WITH PRINTING (M4, M5, M6)
6	4016486	SEALING PLATE (H/E BENDING) (M4, M5, M6)	52 4016517 AIR FILTER (M4, M5, M6)
7	380120J	FITTING SPRING/ THERMISTOR (M4, M5, M6)	53 2561419 SERVICE COVER ASSY. (M4, M5, M6)
8	2561399	CROSS FLOW FAN ASSY (M4, M5, M6)	54 NA CAUTION LABEL (ELECTRIC SHOCK) (M4, M5, M6)
9	2561385	EL. COMPO. BOX (M4, M5, M6)	55 2561404 DRAIN PAN ASSY. (MANUAL) (M4, M5, M6)
10	174888J	PAN HEAD TAPPING SCREW (M4, M5, M6)	56 4016499 DRAIN PAN STABILIZER (M4, M5, M6)
11	2561392	WIRE HARNESS (DISPLAY) (M4, M5, M6)	57 2561409 CAUTION LABEL (M4, M5, M6)
12	2561388	EARTH WIRE (FG) (M4, M5, M6)	58 170429J TAPPING SCREW (M4, M5, M6)
13	2561400	FAN MOTOR STATOR (STD) (M4, M5, M6)	59 4017170 DISCH. GRILLE VERT. BLADE (M4, M5, M6)
14	2558586	THERMISTOR ASSY. (M4, M5, M6)	60 6028456 DRAIN PLUG (M4, M5, M6)
15	2561387	WIRE HARNESS (POWER) (M4, M5, M6)	61 2543101 DRAIN HOSE (M4, M5, M6)
16	2561391	PRINTED CIRCUIT BOARD ASSY. (M4, M5, M6)	62 179743J SWING MOTOR (M4, M5, M6)
17	2561389	SHIELD PLATE (TERMINAL REAR) (M4, M5, M6)	63 2561405 WIRE HARNESS ASSY. (HORI. BLADE) (M4, M5, M6)
18	2560606	HUMIDITY SENSOR (M4, M5, M6)	64 2561406 SHAFT (LINK) ASSY. (M4, M5, M6)
19	2561393	WIRE HARNESS (HUMIDITY SENSOR) (M4, M5, M6)	65 2544273 DISCH. GRILLE HOR. BLADE SUPPORT (M4, M5, M6)
20	2561423	FINISHED PRODUCTS ASSY. (WLAN MODULE) (M4, M5, M6)	66 2561407 SHAFT (LINK 2) (M4, M5, M6)
21	2561424	ELECTRIC BOX FIXTURE (WIRELESS) (M4, M5, M6)	67 2561408 SHAFT (LINK 3) (M4, M5, M6)
22	2561425	COVER (WIRELESS ADAPTER) (M4, M5, M6)	68 6024984 FAN GUARD ASSY. (M4, M5, M6)
23	2561426	WIRE HARNESS (WIRELESS ADAPTER) (M4, M5, M6)	69 2561410 DISCH. GRILLE HOR. BLADE (1) ASSY. (M4, M5, M6)
24	2561395	EARTH WIRE (TERMINAL STRIP) (M4, M5, M6)	70 2561412 SHAFT (M4, M5, M6)
25	2561396	EARTH WIRE (HEAT EXCHANGER) (M4, M5, M6)	71 4016519 SEALING PLATE (TOP) (M4, M5, M6)
26	2561397	EARTH WIRE (HEAT EXCHANGER) (M4, M5, M6)	72 2561958 REMOTE CONTROLLER ASSY (M4, M5, M6)
27	2561788	PRINTED CIRCUIT BOARD ASSY. (M4)	73 1597259 DUST COLLECTING ELEMENT FRAME (M4, M5, M6)
27	2561789	PRINTED CIRCUIT BOARD ASSY. (M5)	74 NA CAUTION LABEL (M4, M5, M6)
27	2561790	PRINTED CIRCUIT BOARD ASSY. (M6)	75 NA PRODUCT LIABILITY CAUTION LABEL (M4, M5, M6)
28	2559803	INSULATION SHEET (RADIATION) (M4, M5, M6)	76 183432J HOLDER/ REMOTE CONTROLLER (M4, M5, M6)
29	2374334	PAN HEAD MACHINE SCREW S-TIGHT (M4, M5, M6)	77 2539271 BATTERY KIT (M4, M5, M6)
30	2561386	SHIELD PLATE (1) (M4, M5, M6)	78 4020169 SCREW SET (M4, M5, M6)
31	2561417	SHIELD PLATE (2) (M4, M5, M6)	79 081957J HEAT INSULATION TAPE (M4, M5, M6)
32	2531967	TERMINAL STRIP (M4, M5, M6)	80 4017130 PHOTOCATALYST FILTER ASSY. (M4, M5, M6)
33	0812847	WIRE CLAMP (M4, M5, M6)	81 4016523 INSTALLATION PLATE (M4, M5, M6)
34	2561390	INDICATION LAMP COVER (M4, M5, M6)	
35	2561398	CONDUIT MOUNTING PLATE (M4, M5, M6)	
36	2561403	BOTTOM FRAME ASSY. (M4, M5, M6)	
37	4016520	PIPING FIXTURE (M4, M5, M6)	
38	2561402	MOTOR COVER (CAP) ASSY. (M4, M5, M6)	
39	2561401	MOTOR COVER (BODY) ASSY. (M4, M5, M6)	
40	4023758	RUBBER GROMMET (M4, M5, M6)	
41	2540555	FAN BEARING VIBRATION ABSORBER (M4, M5, M6)	
42	7900101	FAN BEARING ASSY. (M4, M5, M6)	
43	156867J	VIBRATION ABSORBER/ FAN BEARING (M4, M5, M6)	
44	121650J	TRUSS HEAD TAPPING SCREW (M4, M5, M6)	

# FTXV[15,18,24]AVJU9

**Ref. Part**

**No: No:**

**Description:**

**Ref. Part**

**No: No:**

**Description:**

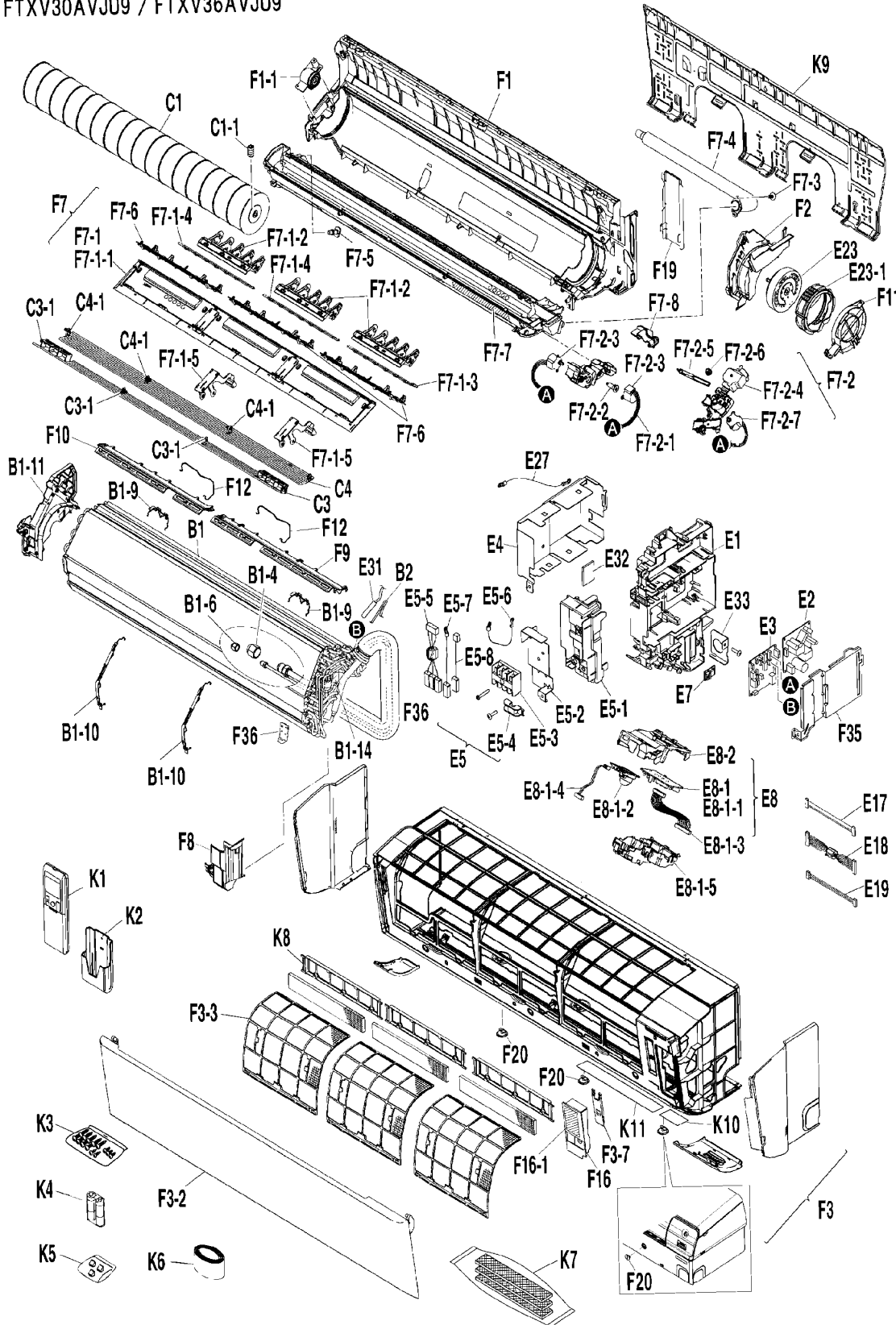
---

## Expanded Model Nomenclature

M1 - CTXV07AVJU9
M2 - FTXV09AVJU9
M3 - FTXV12AVJU9
M4 - FTXV15AVJU9
M5 - FTXV18AVJU9
M6 - FTXV24AVJU9
M7 - FTXV30AVJU9
M8 - FTXV36AVJU9
M9 - 2MXM18AVJU9
M10 - 2MXTH18AVJU9
M11 - 2MXT18AVJU9
M12 - 3MXM24AVJU9
M13 - 4MXM36AVJU9

# FTXV[30,36]AVJU9

FTXV30AVJU9 / FTXV36AVJU9



Picture Key	
Ref #	Picture #
1	B1
2	B1-10
3	B1-11
4	B1-14
5	B1-4
6	B1-6
7	B1-9
8	B2
9	C1
10	C1-1
11	C3
12	C3-1
13	C4
14	C4-1
15	E1
16	E17
17	E18
18	E19
19	E2
20	E23
21	E23-1
22	E27
23	E3
24	E31
25	E32
26	E33
27	E4
28	E5
29	E5-1
30	E5-2
31	E5-3
32	E5-4
33	E5-5
34	E5-6
35	E5-7
36	E5-8
37	E7
38	E8
39	E8-1
40	E8-1-1
41	E8-1-2
42	E8-1-3
43	E8-1-4
44	E8-1-5
45	E8-2
46	F1
47	F10
48	F11
49	F1-1
50	F12
51	F16
52	F16-1
53	F19
54	F2
55	F20
56	F3
57	F3-2
58	F3-3
59	F35
60	F36
61	F3-7
62	F7
63	F7-1
64	F7-1-1
65	F7-1-2
66	F7-1-3
67	F7-1-4
68	F7-1-5
69	F7-2
70	F7-2-1
71	F7-2-2
72	F7-2-3
73	F7-2-4
74	F7-2-5
75	F7-2-6
76	F7-2-7
77	F7-3
78	F7-4
79	F7-5
80	F7-6
81	F7-7
82	F7-8
83	F8
84	F9
85	K1
86	K10
87	K11
88	K2
89	K3
90	K4
91	K5
92	K6
93	K7
94	K8
95	K9

# FTXV[30,36]AVJU9

Ref. Part No: No:	Description:	Ref. Part No: No:	Description:
<b>Image 1:</b>		<b>Image 1:</b>	
1	2573584 HEAT EXCHANGER ASSY. (M7, M8)	54	2549113 RIGHT SIDE PANEL ASSY. (M7, M8)
2	2549099 WIRE SPRING ASSY. (8 STAGE) (M7, M8)	55	2558255 FIXTURE (FRONT GRILLE) (M7, M8)
3	2549097 LEFT SIDE PANEL (M7, M8)	56	2571406 FRONT GRILLE ASSY. (M7, M8)
4	7900139 PUTTY (M7, M8)	57	2547942 PANEL (M7, M8)
5	119850J FLARE NUT (M7, M8)	58	2547944 AIR FILTER (M7, M8)
6	1723546 FLARE NUT (M7, M8)	59	2535270 SHIELD PLATE (2) ASSY. (M7, M8)
7	2549098 WIRE SPRING ASSY. (4 STAGE) (M7, M8)	60	2568820 FRONT TUBE PLATE (HEAT EXCH.) (M7, M8)
8	380120J FITTING SPRING/ THERMISTOR (M7, M8)	61	2535256 SUPPORT PLATE (M7, M8)
9	2549105 CROSS FLOW FAN ASSY. (M7, M8)	62	2571405 DRAIN PAN ASSY. (M7, M8)
10	051605J HEX. SOCKET SCREW (M7, M8)	63	2549107 AIR OUTLET (STABILIZER) ASSY. (M7, M8)
11	2547945 DISCH. GRILLE HOR. BLADE (M7, M8)	64	2551411 DRAIN PAN UNDER COVER (M7, M8)
12	1840922 ROD/ HORIZONTAL VANE (M7, M8)	65	2530199 DISCH. GRILLE VERT. BLADE (AUTO) (M7, M8)
13	2547946 DISCH. GRILLE HOR. BLADE (M7, M8)	66	2549108 CONNECTING ROD (V-BLADE) 1 (M7, M8)
14	1840922 ROD/ HORIZONTAL VANE (M7, M8)	67	2549109 CONNECTING ROD (V-BLADE) 2 (M7, M8)
15	2535227 SWITCH BOX (M7, M8)	68	2535242 DRAIN PAN ARM (M7, M8)
16	2495419 WIRE HARNESS (HIGH VOLTAGE) (M7, M8)	69	NA GEAR CASE (M7, M8)
17	2530594 WIRE HARNESS (LOW VOLTAGE) (M7, M8)	70	2511102 WIRE HARNESS ASSY. (M7, M8)
18	2533924 WIRE HARNESS (SENSOR) (M7, M8)	71	2535248 SHAFT (H_BLADE) (M7, M8)
19	2547938 PRINTED CIRCUIT BOARD ASSY. (M7, M8)	72	1906543 MOTOR(SWING FLAP) (M7, M8)
20	2549103 DC FAN MOTOR (M7, M8)	73	2535249 GEAR CASE (V-BLADE) (M7, M8)
21	2549104 RUBBER GROMMET (M7, M8)	74	2535250 GEAR (LACK) (M7, M8)
22	NA EARTH WIRE (M7, M8)	75	2535247 GEAR (MOTOR) (M7, M8)
23	2575555 PRINTED CIRCUIT BOARD ASSY. (M8)	76	1906543 MOTOR (SWING FLAP) (M7, M8)
23	2575554 PRINTED CIRCUIT BOARD ASSY. (M7)	77	170429J CROSS RECESSED PAN HEAD TAPPING SCREW (M7, M8)
24	2549689 THERMISTOR ASSY. (M7, M8)		
25	2444389 INSULATION SHEET (RADIATION) (M7, M8)	78	2530200 DRAIN HOSE (M7, M8)
26	2535237 CONDUIT MOUNTING PLATE (M7, M8)	79	6028456 DRAIN PLUG (M7, M8)
27	2535228 SHIELD PLATE (1) (M7, M8)	80	2549110 FAN GUARD ASSY. (M7, M8)
28	2549101 MOUNTING PLATE (TERMINAL STRIP) ASSY. (M7, M8)	81	NA CAUTION LABEL (DRAIN PAN) (M7, M8)
		82	2551413 INDICATION LAMP COVER (SUPPORT) (M7, M8)
29	2535267 MOUNTING PLATE (TERMINAL STRIP) (M7, M8)	83	2549115 DRIP PROOF PLATE (M7, M8)
30	2535268 SHIELD PLATE (TERMINAL REAR) (M7, M8)	84	2549111 SEALING PLATE (H/E TOP) R (M7, M8)
31	2531967 TERMINAL STRIP (M7, M8)	85	2571409 REMOTE CONTROLLER ASSY (M7, M8)
32	0812847 WIRE RETAINING BAND (M7, M8)	86	NA CAUTION LABEL (HIGH VOLTAGE) (M7, M8)
33	2530592 WIRE HARNESS (FOR POWER SOURCE) (M7, M8)	87	NA CAUTION LABEL (FLAMMABLE GAS) (M7, M8)
34	NA EARTH WIRE (M7, M8)	88	2535264 HOLDER/ REMOTE CONTROLLER (M7, M8)
35	2535230 EARTH WIRE (TERMINAL STRIP) (M7, M8)	89	NA ACCESSORY SET (SCREW PACK) (M7, M8)
36	2549102 EARTH WIRE (POWER PCB) (M7, M8)	90	NA BATTERY KIT (M7, M8)
37	2546573 HUMIDITY SENSOR (M7, M8)	91	2535281 ACCESSORY SET (SCREW COVER) (M7, M8)
38	2536606 INDICATION LAMP COVER ASSY. (M7, M8)	92	081957J HEAT INSULATION TAPE (M7, M8)
39	2536607 INDICATION LAMP COVER DISPLAY ASSY. (M7, M8)	93	2571408 APATAITO FILTER (PACKED PRODUCTS) (M7, M8)
		94	1597259 DUST COLLECTING ELEMENT FRAME (M7, M8)
40	2530196 PRINTED CIRCUIT BOARD ASSY. (M7, M8)	95	2549128 INSTALLATION PLATE LETTER RELEAF METHOD (M7, M8)
41	2533895 PRINTED CIRCUIT BOARD ASSY. (M7, M8)		
42	2530593 WIRE HARNESS (FOR DISPLAY PCB) (M7, M8)		
43	2533896 WIRE HARNESS (MP MOTION SENSOR) (M7, M8)		
44	2535236 INDICATION LAMP COVER (M7, M8)		
45	2535269 INDICATION LAMP COVER BASE (M7, M8)		
46	2549106 BOTTOM FRAME ASSY. (M7, M8)		
47	2549112 SEALING PLATE (H/E TOP) L (M7, M8)		
48	2535258 MOTOR COVER (CAP) (M7, M8)		
49	2535239 FAN BEARING VIBRATION ABSORBER (M7, M8)		
50	2551414 WIRE SPRING (TOP SEALING PLATE) (M7, M8)		
51	2571407 SERVICE COVER (M7, M8)		
52	NA CAUTION LABEL(ELECTRIC SHOCK) (M7, M8)		
53	2549114 PIPING FIXTURE (M7, M8)		

# FTXV[30,36]AVJU9

**Ref. Part**

**No: No:**

**Description:**

**Ref. Part**

**No: No:**

**Description:**

---

## Expanded Model Nomenclature

M1 - CTXV07AVJU9
M2 - FTXV09AVJU9
M3 - FTXV12AVJU9
M4 - FTXV15AVJU9
M5 - FTXV18AVJU9
M6 - FTXV24AVJU9
M7 - FTXV30AVJU9
M8 - FTXV36AVJU9
M9 - 2MXM18AVJU9
M10 - 2MXTH18AVJU9
M11 - 2MXT18AVJU9
M12 - 3MXM24AVJU9
M13 - 4MXM36AVJU9