



Submittal Data Sheet

3 Ton, Cased Painted Upflow/Downflow, Coil
CAPF3137B6

STANDARD FEATURES

- All-Aluminum evaporator coil
- Optimized for use with R-410A refrigerant
- Some models suitable for use with R-410A or R-22 refrigerant
- CAPT models feature factory-installed thermal expansion valves for cooling and heat pump applications
- Check flowrator for cooling and heat pump applications
- Vertical and horizontal models available
- 21" depth for easier attic access
- Split seam front for easy access
- Foil-faced insulation covers the internal casing to reduce cabinet condensation
- Galvanized, leather grain-embossed finish
- Rust resistant, thermoplastic drain pans featuring a low water-retention design
- DecaBDE-free thermoplastic drain pan with secondary drain connections
- UV-resistant drain pan
- AHRI certified
- ETL listed





Submittal Data Sheet

3 Ton, Cased Painted Upflow/Downflow, Coil
CAPF3137B6

PERFORMANCE

Product Model No.	CAPF3137B6	Product Model Name:	3 Ton, Cased Painted Upflow/Downflow, Coil
Type:	Coil	Cooling Capacity (Nominal) (Btu/hr):	36,000

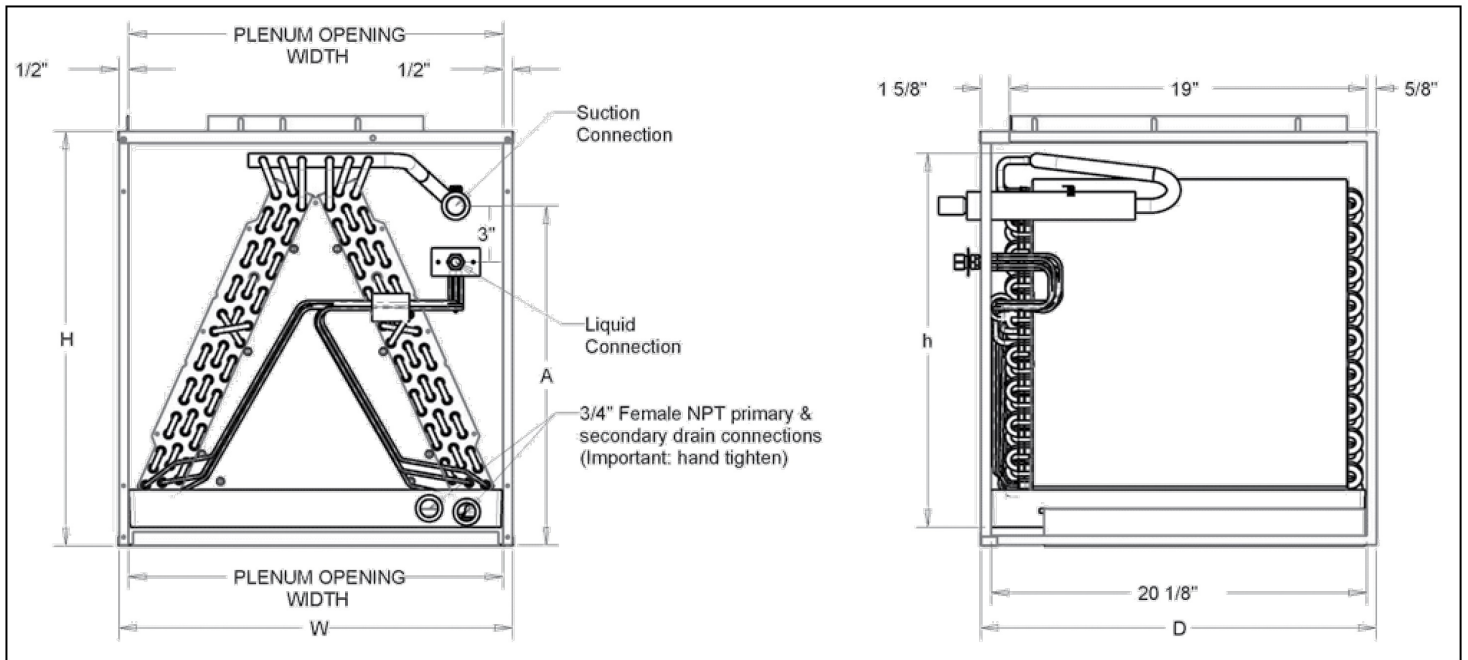
PRODUCT DETAILS

Dimensions (HxWxD) (in):	30 x 17-1/2 x 21	Suction Valve Connection Size (inch):	3/4
Net Weight (lb):	53	Liquid Valve Connection Size (inch):	3/8
Gross Weight (lb):	62	Condensate Connection (inch):	3/4

Submittal Data Sheet

3 Ton, Cased Painted Upflow/Downflow, Coil
CAPF3137B6

DIMENSIONAL DRAWING



MODEL	CABINET DIMENSIONS			NOMINAL TONS	CONNECTION		PISTON SIZE*
	W	D	H		LIQUID	SUCTION	
CAPF1824A6	14"	21"	18"	1½-2	¾"	¾"	.059
CAPF1824B6	17½"	21"	18"	1½-2	¾"	¾"	.059
CAPF1824C6	21"	21"	22"	1½-2	¾"	¾"	.059
CAPF3030A6	14"	21"	22"	2½	¾"	¾"	.065
CAPF3030B6	17½"	21"	22"	2½	¾"	¾"	.065
CAPF3030C6	21"	21"	22"	2½	¾"	¾"	.065
CAPF3030D6	24½"	21"	22"	2½	¾"	¾"	.065
CAPF3131B6	17½"	21"	22"	2½	¾"	¾"	.068
CAPF3137B6	17½"	21"	30"	2½-3	¾"	¾"	.071
CAPF3131C6	21"	21"	22"	2½	¾"	¾"	.068
CAPF3636A6	14"	21"	22"	3	¾"	¾"	.071
CAPF3636B6	17½"	21"	22"	3	¾"	¾"	.071
CAPF3636C6	21"	21"	22"	3	¾"	¾"	.071
CAPF3636D6	24½"	21"	22"	3	¾"	¾"	.071
CAPF3642C6	21"	21"	22"	3-3½	¾"	¾"	.078
CAPF3642D6	24½"	21"	22"	3-3½	¾"	¾"	.078
CAPF3743C6	21"	21"	30"	3-3½	¾"	7/8"	.078
CAPF3743D6	24½"	21"	30"	3-3½	¾"	7/8"	.078
CAPF4860C6	21"	21"	30"	4-5	¾"	7/8"	.093
CAPF4860D6	24½"	21"	30"	4-5	¾"	7/8"	.093
CAPF4961C6	21"	21"	30"	4-5	¾"	7/8"	.093
CAPF4961D6	24½"	21"	30"	4-5	¾"	7/8"	.093

*Shipped with Coil

Note: For a properly matched system and piston sizing information, refer to Goodman piston kit chart of the corresponding Goodman® outdoor unit

Daikin City Generated Submittal Data

Daikin North America LLC, 5151 San Felipe, Suite 500, Houston, TX 77056

www.daikinmac.com www.daikincomfort.com

(Daikin's products are subject to continuous improvements. Daikin reserves the right to modify product design, specifications and information in this data sheet without notice and without incurring any obligations)