



## Submittal Data Sheet

3.5 Ton, Cased Painted Upflow/Downflow, Coil  
CAPF3743D6

### STANDARD FEATURES

- All-Aluminum evaporator coil
- Optimized for use with R-410A refrigerant
- Some models suitable for use with R-410A or R-22 refrigerant
- CAPT models feature factory-installed thermal expansion valves for cooling and heat pump applications
- Check flowrator for cooling and heat pump applications
- Vertical and horizontal models available
- 21" depth for easier attic access
- Split seam front for easy access
- Foil-faced insulation covers the internal casing to reduce cabinet condensation
- Galvanized, leather grain-embossed finish
- Rust resistant, thermoplastic drain pans featuring a low water-retention design
- DecaBDE-free thermoplastic drain pan with secondary drain connections
- UV-resistant drain pan
- AHRI certified
- ETL listed





## Submittal Data Sheet

3.5 Ton, Cased Painted Upflow/Downflow, Coil  
CAPF3743D6

### PERFORMANCE

Product Model No.	CAPF3743D6	Product Model Name:	3.5 Ton, Cased Painted Upflow/Downflow, Coil
Type:	Coil	Cooling Capacity (Nominal) (Btu/hr):	42,000

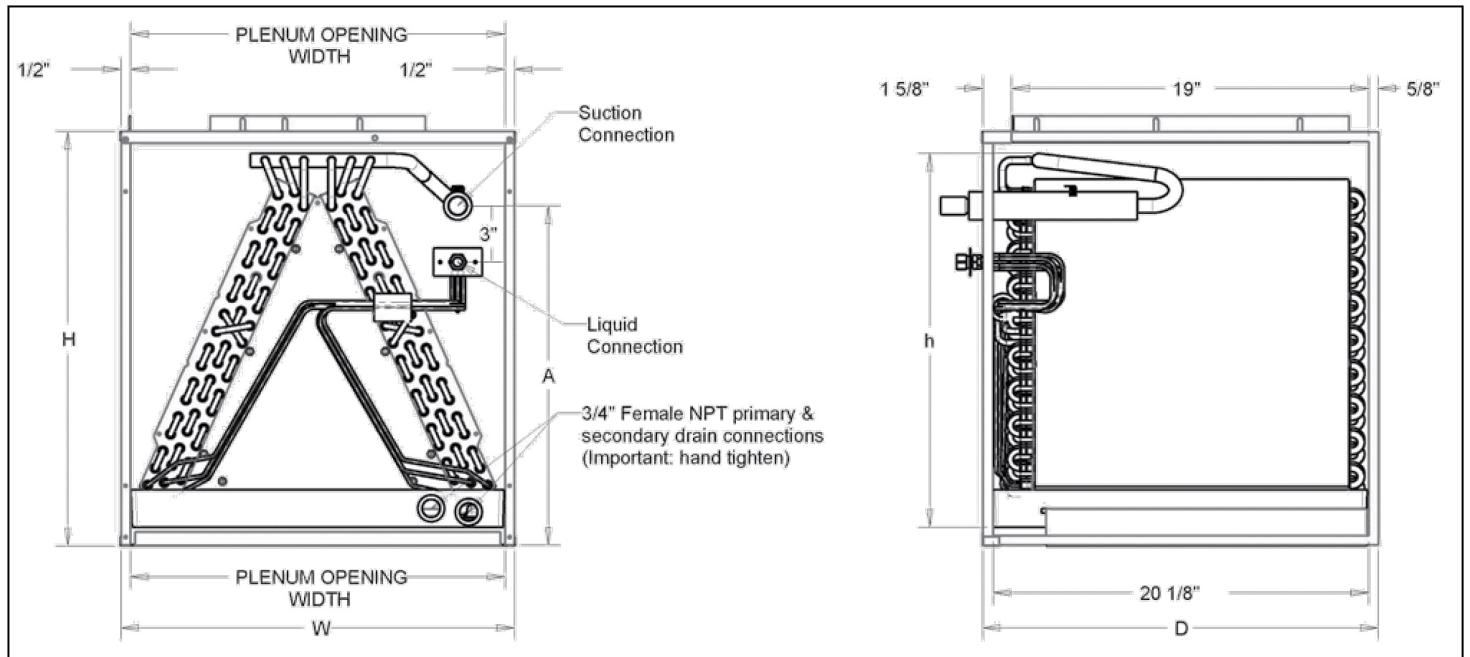
### PRODUCT DETAILS

Dimensions (HxWxD) (in):	30 x 24-1/2 x 21	Suction Valve Connection Size (inch):	7/8
Net Weight (lb):	75	Liquid Valve Connection Size (inch):	3/8
Gross Weight (lb):	75	Condensate Connection (inch):	3/4

### Submittal Data Sheet

3.5 Ton, Cased Painted Upflow/Downflow, Coil  
CAPF3743D6

### DIMENSIONAL DRAWING



MODEL	CABINET DIMENSIONS			NOMINAL TONS	CONNECTION		PISTON SIZE*
	W	D	H		LIQUID	SUCTION	
CAPF1824A6	14"	21"	18"	1½-2	3/8"	3/4"	.059
CAPF1824B6	17½"	21"	18"	1½-2	3/8"	3/4"	.059
CAPF1824C6	21"	21"	22"	1½-2	3/8"	3/4"	.059
CAPF3030A6	14"	21"	22"	2½	3/8"	3/4"	.065
CAPF3030B6	17½"	21"	22"	2½	3/8"	3/4"	.065
CAPF3030C6	21"	21"	22"	2½	3/8"	3/4"	.065
CAPF3030D6	24½"	21"	22"	2½	3/8"	3/4"	.065
CAPF3131B6	17½"	21"	22"	2½	3/8"	3/4"	.068
CAPF3137B6	17½"	21"	30"	2½-3	3/8"	3/4"	.071
CAPF3131C6	21"	21"	22"	2½	3/8"	3/4"	.068
CAPF3636A6	14"	21"	22"	3	3/8"	3/4"	.071
CAPF3636B6	17½"	21"	22"	3	3/8"	3/4"	.071
CAPF3636C6	21"	21"	22"	3	3/8"	3/4"	.071
CAPF3636D6	24½"	21"	22"	3	3/8"	3/4"	.071
CAPF3642C6	21"	21"	22"	3-3½	3/8"	3/4"	.078
CAPF3642D6	24½"	21"	22"	3-3½	3/8"	3/4"	.078
CAPF3743C6	21"	21"	30"	3-3½	3/8"	7/8"	.078
CAPF3743D6	24½"	21"	30"	3-3½	3/8"	7/8"	.078
CAPF4860C6	21"	21"	30"	4-5	3/8"	7/8"	.093
CAPF4860D6	24½"	21"	30"	4-5	3/8"	7/8"	.093
CAPF4961C6	21"	21"	30"	4-5	3/8"	7/8"	.093
CAPF4961D6	24½"	21"	30"	4-5	3/8"	7/8"	.093

\*Shipped with Coil

Note: For a properly matched system and piston sizing information, refer to Goodman piston kit chart of the corresponding Goodman® outdoor unit