



Submittal Data Sheet
3.0 Ton Wall Mounted Unit
FTXS36LVJU

INDOOR UNIT



OUTDOOR UNIT





Submittal Data Sheet

3.0 Ton Wall Mounted Unit

FTXS36LVJU

SYSTEM PERFORMANCE

Rated Cooling Capacity (Btu/hr):	36,000	Rated Cooling Conditions:	Indoor (°F DB/WB): 80 / 67 Ambient (°F DB/WB): 95 / 75
Sensible Capacity (Btu/hr):	22,890	Rated Piping Length(ft):	
Max/Min Cooling Capacity (Btu/hr):	/	Rated Height Difference (ft):	
Cooling Input Power (kW):	2.090	Rated Heating Conditions:	Indoor (°F DB/WB): 70 / 60 Ambient (°F DB/WB): 47 / 43
SEER (Non-Ducted/Ducted):	/		
EER (Non-Ducted/Ducted):	/		

SYSTEM DETAILS

Refrigerant Type:	R-410A	Cooling Operation Range (°F DB):	14 - 115
Holding Refrigerant Charge (lbs):		Heating Operation Range (°F WB):	-
Additional Charge (lb/ft):		Max. Pipe Length (Vertical) (ft):	
Pre-charge Piping (Length) (ft):		Cooling Range w/Baffle (°F DB):	-
Max. Pipe Length (Total) (ft):		Heating Range w/Baffle (°F WB):	-
Max Height Separation (Ind to Ind ft):			

Submittal Data Sheet

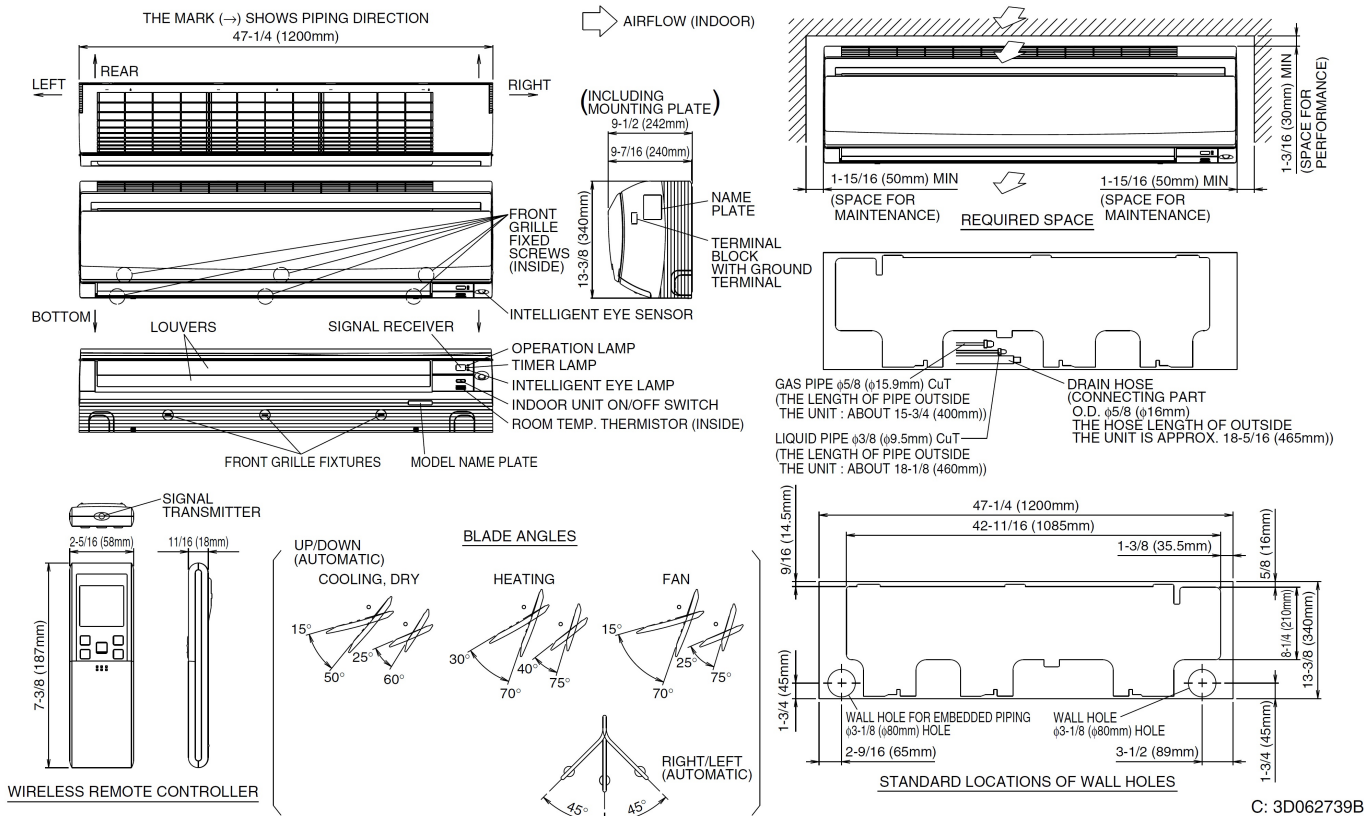
3.0 Ton Wall Mounted Unit

FTXS36LVJU

INDOOR UNIT DETAILS			
Power Supply (V/Hz/Ph):	208-230 / 60 / 1	Airflow Rate (H/M/L/SL) (CFM):	770/635/519/473
Power Supply Connections:	See Outdoor Unit for Electrical Specs	Moisture Removal (Gal/hr):	
Min. Circuit Amps MCA (A):		Gas Pipe Connection (inch):	5/8
Max Overcurrent Protection (MOP) (A):		Liquid Pipe Connection (inch):	3/8
Dimensions (HxWxD) (in):	13-3/8 x 47-1/4 x 9-7/16	Condensate Connection (inch):	5/8
Net Weight (lb):	38	Sound Pressure (H/M/L/SL) (dBA):	49/45/40/37
Ext. Static Pressure (Rated/Max) (inWg):	/	Sound Power Level (dBA):	65

DIMENSIONAL DRAWING - INDOOR UNIT

FTXS30/36LVJU



Submittal Data Sheet

3.0 Ton Wall Mounted Unit

FTXS36LVJU

OUTDOOR UNIT DETAILS			
Power Supply (V/Hz/Ph):	208-230 / 60 / 1	Compressor Stage:	
Power Supply Connections:	See Outdoor Unit for Electrical Specs	Capacity Control Range (%):	-
Min. Circuit Amps MCA (A):		Airflow Rate (H/M/L/SL) (CFM):	770/635/519/473
Max Overcurrent Protection (MOP) (A):		Gas Pipe Connection (inch):	5/8
Max Starting Current MSC(A):		Liquid Pipe Connection (inch):	3/8
Rated Load Amps RLA(A):		Sound Pressure (H/M/L/SL) (dBA):	49/45/40/37
Dimensions (HxWxD) (in):	13-3/8 x 47-1/4 x 9-7/16	Sound Power Level (dBA):	65
Net Weight (lb):	38		

DIMENSIONAL DRAWING - OUTDOOR UNIT

FTXS30/36LVJU

