



## Submittal Data Sheet

15.2 IEER, Air Conditioner System, 7.5 Ton, Outdoor Unit-DX14XA0904A\*

Submitted By : Daikin

Submitted To : N/A

Tags : AHRI 210605693 Products [DX14XA0904A\* , DAX09044A\* , ] , IEER 15.2 , EER 11.2

Region : ( )

### STANDARD FEATURES:

- Two-Stage energy efficient compressor
- Quiet operating top discharge
- High-efficiency copper tube/aluminum fin coil
- Brass liquid and suction service valves
- factory installed filter drier
- complies with ASHRAE 90.1
- AHRI Certified
- ETL Listed

### CABINET FEATURES:

- Innovative sound control top design
- Steel Louver coil guard protects the coil from damage and adds strength to unit
- Bottom pan rails elevate unit above slab
- Heavy-gauge galvanized steel cabinet
- attractive nickel gray powder-paint finish



19001 Kermier Rd, Waller, TX 77484

[www.daikinac.com](http://www.daikinac.com) [www.daikincomfort.com](http://www.daikincomfort.com)

(Daikin's products are subject to continuous improvements. Daikin reserves the right to modify product design, specifications and information in this data sheet without notice and without incurring any obligations)



## Submittal Data Sheet

15.2 IEER, Air Conditioner System, 7.5 Ton, Outdoor Unit-DX14XA0904A\*

Submitted By : Daikin

Submitted To : N/A

Tags : AHRI 210605693 Products [DX14XA0904A\* , DAX09044A\* , ] , IEER 15.2 , EER 11.2

Region : ()

### SYSTEM PERFORMANCE

Outdoor Unit Model No.:	DX14XA0904A*	Description :	0.0 SEER2, Air Conditioner System, 7.5 Ton Outdoor System
Indoor Unit Model No.:	DAX09044A*		
TXV/PISTON :	Factory		
Rated Cooling Conditions:	Outdoor (°F DB/WB):95/75 Indoor (°F DB/WB):80/67	Rated Heating Conditions:	Outdoor (°F DB/WB):N/A/N/A Indoor (°F DB/WB):N/A/N/A
Rated Cooling Capacity (Btu/hr):	N/A	OD Rated Heating Capacity (Btu/hr)	N/A
EER2:	N/A	EER:	11.2
Heating COP:	N/A	SEER2:	N/A
IEER:	15.2	AFUE:	N/A

### OUTDOOR UNIT DETAILS : DX14XA0904A\*

Power Supply (V/Hz/Ph):	460/60/3	Compressor Type:	Scroll
Min. Circuit Amps MCA (A):	18.5	Compressor Stages:	Two Stage
Quantity:	1	Max Overcurrent Protection (MOP) (A):	30
Suction Valve Connection Size (in):	1-3/8	Compressor Rated Load Amps :	12.0
Liquid Valve Connection Size (in):	5/8	Refrigerant Type:	R-410A
Sound Power(High/Med/Low) (dBA):	83.7 / - / -	Holding Refrigerant Charge (oz):	55
Cooling Operation Range (°F DB):	65 - 115	Additional Charge (oz/ft):	-
Heating Operation Range (°F DB):	N/A	Pre-charge Piping (Length) (ft):	15
Net Weight (lb):	-	Dimensions (HxWxD) (in):	41.5 x 35.5 x 35.5
Gross Weight (lb):	322	*Max. Pipe Length (Vertical) (ft):	-
*Max. Pipe Length (Total) (ft):	-		

*\*Refer to Long Line Set Application TP-107 for lines greater than 80 ft. or vertical elevation changes more than 50 ft. for single stage equipment and 25 ft. for 2-stage equipment.*

19001 Kermier Rd, Waller, TX 77484  
[www.daikinac.com](http://www.daikinac.com) [www.daikincomfort.com](http://www.daikincomfort.com)

(Daikin's products are subject to continuous improvements. Daikin reserves the right to modify product design, specifications and information in this data sheet without notice and without incurring any obligations)



## Submittal Data Sheet

15.2 IEER, Air Conditioner System, 7.5 Ton, Outdoor Unit-DX14XA0904A\*

Submitted By : Daikin

Submitted To : N/A

Tags : AHRI 210605693 Products [DX14XA0904A\* , DAX09044A\* , ] , IEER 15.2 , EER 11.2

Region : ()

### LIST OF ACCESSORIES : DX14XA0904

Model No.	Description	Quantity Required
ABK-20	ANCHOR BRACKET KIT	1
LSK01A	SOLENOID KIT FOR REM	1
0130L00024	CRANK CASE HEATER 70W, 480V	1
0130L00023	CRANK CASE HEATER 70W 240V	1
LAKT00AC	Low Ambient Kit	1
OT18-60-01A	Outdoor Thermostat Kit	1
ASC02A	Anti-Short Cycle Kit	1

19001 Kermier Rd, Waller, TX 77484

[www.daikinac.com](http://www.daikinac.com) [www.daikincomfort.com](http://www.daikincomfort.com)

(Daikin's products are subject to continuous improvements. Daikin reserves the right to modify product design, specifications and information in this data sheet without notice and without incurring any obligations)



## Submittal Data Sheet

15.2 IEER, Air Conditioner System, 7.5 Ton, Outdoor Unit-DX14XA0904A\*

Submitted By : Daikin

Submitted To : N/A

Tags : AHRI 210605693 Products [DX14XA0904A\* , DAX09044A\* , ] , IEER 15.2 , EER 11.2

Region : ()

19001 Kermier Rd, Waller, TX 77484  
[www.daikinac.com](http://www.daikinac.com) [www.daikincomfort.com](http://www.daikincomfort.com)

(Daikin's products are subject to continuous improvements. Daikin reserves the right to modify product design, specifications and information in this data sheet without notice and without incurring any obligations)



## Submittal Data Sheet

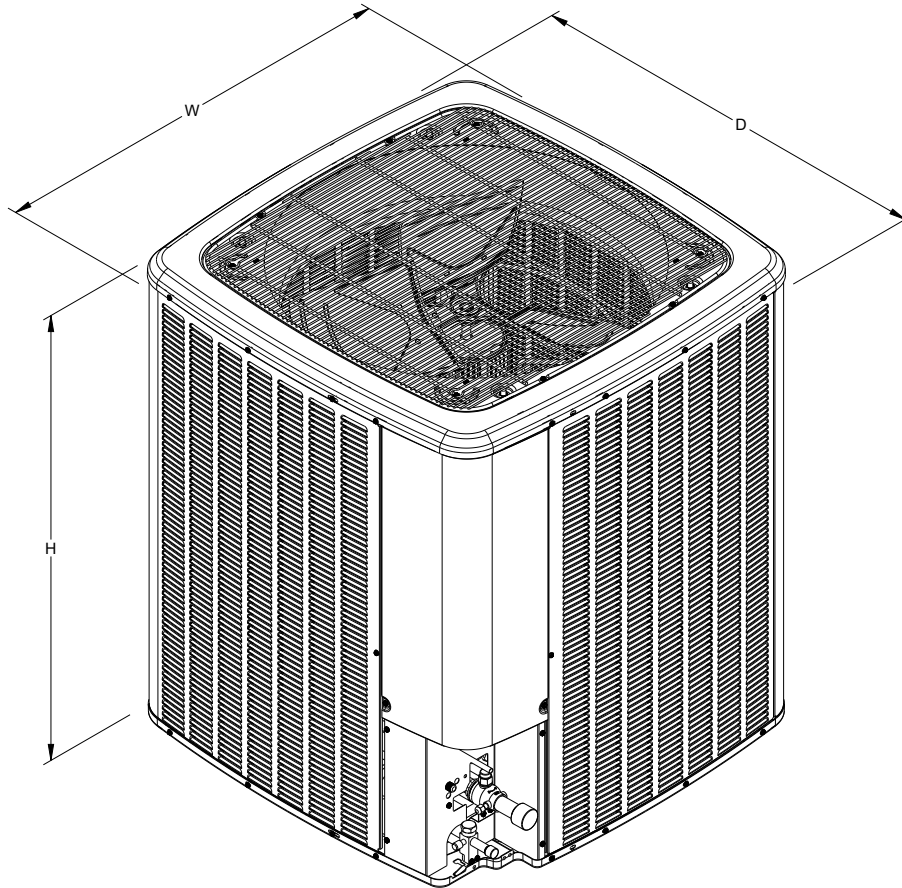
15.2 IEER, Air Conditioner System, 7.5 Ton, Outdoor Unit-DX14XA0904A\*

Submitted By : Daikin

Submitted To : N/A

Tags : AHRI 210605693 Products [DX14XA0904A\* , DAX09044A\* , ] , IEER 15.2 , EER 11.2

Region : ()



Model	Dimensions		
	W"	D"	H"
DX14XA0903A*	35½"	35½"	41½"
DX14XA0904A*	35½"	35½"	41½"
DX14XA1203A*	35½"	35½"	41½"
DX14XA1204A*	35½"	35½"	41½"

19001 Kermier Rd, Waller, TX 77484

[www.daikinac.com](http://www.daikinac.com) [www.daikincomfort.com](http://www.daikincomfort.com)

(Daikin's products are subject to continuous improvements. Daikin reserves the right to modify product design, specifications and information in this data sheet without notice and without incurring any obligations)



## Submittal Data Sheet

15.2 IEER, Air Conditioner System, 7.5 Ton, Outdoor Unit-DX14XA0904A\*

Submitted By : Daikin

Submitted To : N/A

Tags : AHRI 210605693 Products [DX14XA0904A\* , DAX09044A\* , ] , IEER 15.2 , EER 11.2

Region : ( )

### STANDARD FEATURES:

- Uplflow or horizontal (left side) installation positions in 7½ and 10-ton cooling only or heat pump applications
- TXV Control
- Units have two (2) thermal expansion valves
- DAX units feature two 5-speed direct-drive motors
- AHRI Certified
- ETL Listed

### CABINET FEATURES:

- Heavy-gauge, reinforced, galvanized-steel cabinet
- Fully insulated with fiberglass blanket
- Horizontal and vertical condensate pans
- Built-in filter rack (2" filter included)
- Entry on top of panel for both low and high voltage
- Removable access panels make servicing of unit faster and easier



19001 Kermier Rd, Waller, TX 77484

[www.daikinac.com](http://www.daikinac.com) [www.daikincomfort.com](http://www.daikincomfort.com)

(Daikin's products are subject to continuous improvements. Daikin reserves the right to modify product design, specifications and information in this data sheet without notice and without incurring any obligations)



### Submittal Data Sheet

15.2 IEER, Air Conditioner System, 7.5 Ton, Outdoor Unit-DX14XA0904A\*

Submitted By : Daikin

Submitted To : N/A

Tags : AHRI 210605693 Products [DX14XA0904A\* , DAX09044A\* , ] , IEER 15.2 , EER 11.2

Region : ()

## INDOOR AIR HANDLER UNIT DETAILS : DAX09044

Quantity:	1	Configuration:	Upflow
Power Supply (V/Hz/Ph):	460/60/3	Suction Connection Size (in):	-
Min. Circuit Amps MCA (A):	-	Liquid Connection Size (in):	-
Max Overcurrent Protection (MOP) (A):	-	Condensate Connection (in):	3/4
Net Weight (lb):	-	Dimensions (HxWxD) (in):	- x - x -
Gross Weight (lb):	406	Power Voltage (lb):	460
Current Type :	-	Power Phase:	3
Power Frequency :	60	Min Voltage :	-
Max Voltage :	-	MCA :	-
MOP :	-	Electric Heat Range :	15;20;30
Indoor Blower FLA :	-	Fan Motor Output :	-

19001 Kermier Rd, Waller, TX 77484  
[www.daikinac.com](http://www.daikinac.com) [www.daikincomfort.com](http://www.daikincomfort.com)

(Daikin's products are subject to continuous improvements. Daikin reserves the right to modify product design, specifications and information in this data sheet without notice and without incurring any obligations)



## Submittal Data Sheet

15.2 IEER, Air Conditioner System, 7.5 Ton, Outdoor Unit-DX14XA0904A\*

Submitted By : Daikin

Submitted To : N/A

Tags : AHRI 210605693 Products [DX14XA0904A\* , DAX09044A\* , ] , IEER 15.2 , EER 11.2

Region : ()

### INDOOR HEATKIT UNIT DETAILS : DAX09044

HeatKit	BreakerHKDC	CircuitHKDC	VoltageHKDC	Mop	Mca	TotalUnitsInAmps
AHKD15-4A			240	30	28.3	
AHKD20-4A			240	40	35.8	
AHKD30-4A			240	60	50.9	

19001 Kermier Rd, Waller, TX 77484

[www.daikinac.com](http://www.daikinac.com) [www.daikincomfort.com](http://www.daikincomfort.com)

(Daikin's products are subject to continuous improvements. Daikin reserves the right to modify product design, specifications and information in this data sheet without notice and without incurring any obligations)



## Submittal Data Sheet

15.2 IEER, Air Conditioner System, 7.5 Ton, Outdoor Unit-DX14XA0904A\*

Submitted By : Daikin

Submitted To : N/A

Tags : AHRI 210605693 Products [DX14XA0904A\* , DAX09044A\* , ] , IEER 15.2 , EER 11.2

Region : ()

### LIST OF ACCESSORIES : DAX09044

Model No.	Description	Quantity Required
TX3N4	TXV Kit - 3 Ton Non-Bleed R410A	1
TX5N4	5 Ton TXV Kit - Non-Bleed R410A	1
AHKD30-4A	Elec Heatkit 30Kw 480V	1
AHKD20-4A	Elec Heatkit 20Kw 480V	1
AHKD15-4A	Elec Heatkit 15Kw 480V	1
FSK04A	Freeze Stat Kit	1

19001 Kermier Rd, Waller, TX 77484

[www.daikinac.com](http://www.daikinac.com) [www.daikincomfort.com](http://www.daikincomfort.com)

(Daikin's products are subject to continuous improvements. Daikin reserves the right to modify product design, specifications and information in this data sheet without notice and without incurring any obligations)



## Submittal Data Sheet

15.2 IEER, Air Conditioner System, 7.5 Ton, Outdoor Unit-DX14XA0904A\*

Submitted By : Daikin

Submitted To : N/A

Tags : AHRI 210605693 Products [DX14XA0904A\* , DAX09044A\* , ] , IEER 15.2 , EER 11.2

Region : ()

19001 Kermier Rd, Waller, TX 77484  
[www.daikinac.com](http://www.daikinac.com) [www.daikincomfort.com](http://www.daikincomfort.com)

(Daikin's products are subject to continuous improvements. Daikin reserves the right to modify product design, specifications and information in this data sheet without notice and without incurring any obligations)



## Submittal Data Sheet

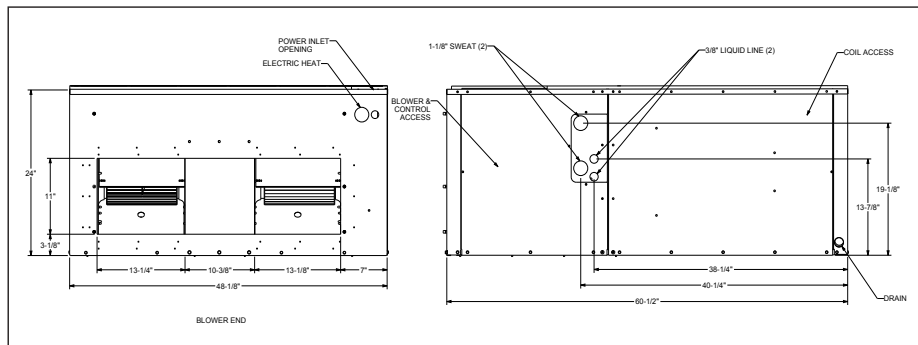
15.2 IEER, Air Conditioner System, 7.5 Ton, Outdoor Unit-DX14XA0904A\*

Submitted By : Daikin

Submitted To : N/A

Tags : AHRI 210605693 Products [DX14XA0904A\* , DAX09044A\* , ] , IEER 15.2 , EER 11.2

Region : ()

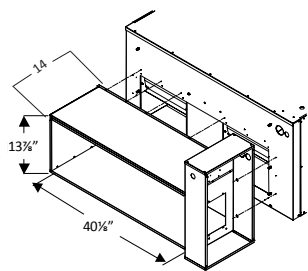


### DUCT CONNECTION SIZING WITHOUT ELECTRIC HEATERS

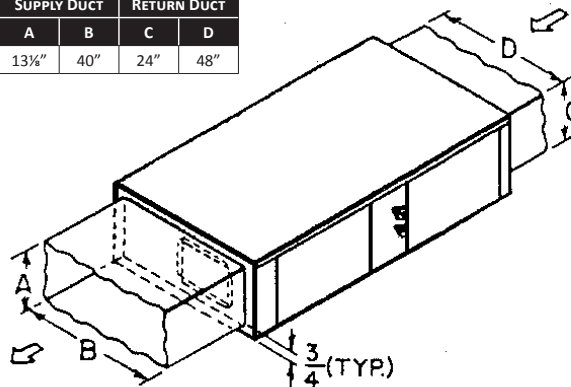
#### MINIMUM SUPPLY AND RETURN DUCT DIMENSIONS

##### DIMENSIONAL DATA FOR ELECTRIC HEATER KITS

- 15, 20, & 30 kW Heater Kits
- Supply opening is 13 3/4" x 40 1/4"



SUPPLY DUCT		RETURN DUCT	
A	B	C	D
13 3/4"	40"	24"	48"



19001 Kermier Rd, Waller, TX 77484

[www.daikinac.com](http://www.daikinac.com) [www.daikincomfort.com](http://www.daikincomfort.com)

(Daikin's products are subject to continuous improvements. Daikin reserves the right to modify product design, specifications and information in this data sheet without notice and without incurring any obligations)