




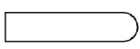
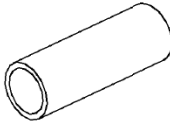
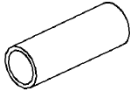
## Submittal Data Sheet

Closed Pipe Kit for Branch Selector Box  
KHFP26A100C

### DESCRIPTION

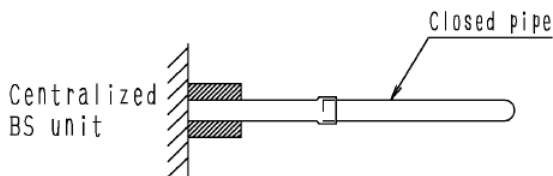
Each Branch Selector boxes comes with 1 set of closed pipe kit to seal off unused piping on the indoor unit side of the branch selector box. The KHFP26A100C is an additional set of closed pipe kit if more than 1 set of close pipe kit is required.

### Components Included:

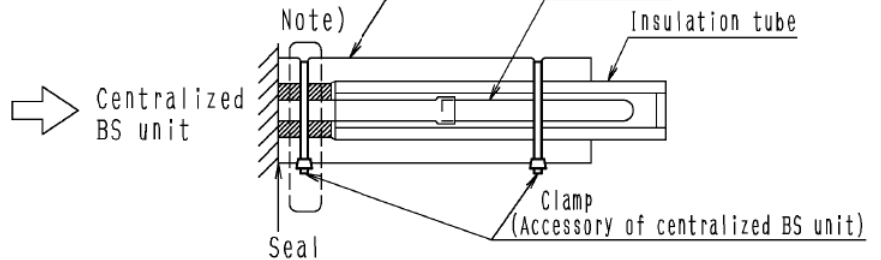
Name	Closed pipe of Gas pipe side	Closed pipe of Liquid pipe side	Insulation tube (Gas pipe side)	Insulation tube (Liquid pipe side)
Quantity	1 pc.	1 pc.	1 pc.	1 pc.
Shape	$\phi 15.9\text{mm}$ ( $\phi 5/8$ inch) 	$\phi 9.5\text{mm}$ ( $\phi 3/8$ inch) 		

### Installation Instruction:

#### INSTALLATION PROCEDURE



Connect the closed pipe kit to the branch not used.

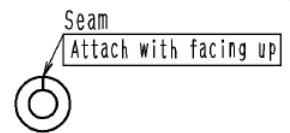


Insulate the closed pipe with insulation tube attached to this kit, and additionally insulate it with insulation tube attached to centralized BS unit.

Note) Clamp at the position of the insulation tube of the centralized BS unit.

#### <INSULATION INSTALLATION PRECAUTIONS>

1. Seal so that air cannot be in and out of the end.
2. Do not over-tighten the clamp so as to maintain the insulation thickness.
3. Be sure to attach the insulation tube (Accessory of centralized BS unit) with the seam facing up. (See the right figure.)



Daikin North America LLC, 5151 San Felipe, Suite 500, Houston TX, 77056  
[www.daikinac.com](http://www.daikinac.com) [www.daikincomfort.com](http://www.daikincomfort.com)

(Daikin's products are subject to continuous improvements. Daikin reserves the right to modify product design, specifications and information in this data sheet without notice and without incurring any obligations).