



# DTG COMMERCIAL

*3 - 5 TONS GAS/ ELECTRIC UNITS  
UP TO 15.5 SEER AND 13.0 EER  
UP TO 81% AFUE*

*Cooling Capacity: 35,600 — 60,000 BTU/h*

*Heating Capacity: 46,000 — 138,000 BTU/h*

## SUBMITTAL DATA FORM

Job Name \_\_\_\_\_

Location \_\_\_\_\_

Purchaser \_\_\_\_\_

Order No. \_\_\_\_\_

Engineer \_\_\_\_\_

Unit No. \_\_\_\_\_

Model No. \_\_\_\_\_

Unit Designation \_\_\_\_\_

Performance Data Certified By: \_\_\_\_\_

### ■ Standard Features

- High-efficiency scroll compressor
- Copper tube/aluminum fin coils
- High- and low-pressure switches
- Contactor with lugs
- High-capacity, steel-cased filter drier
- Heater kits with single-point entry
- 24-volt terminal strip
- Convertible airflow orientation
- Easy to service
- Built-in filter rack with standard 2" filters
- Bottom utility entry
- AHRI Certified; ETL Listed
- 3-phase unit meets the performance specified as of 1/1/2015 in Table 6.8.1-1 of ASHRAE Standard 90.1-2013

### ■ Cabinet Features

- Heavy-gauge, galvanized-steel cabinet with UV-resistant powder-paint finish
- Full Perimeter Rail
- Sloped drain pan

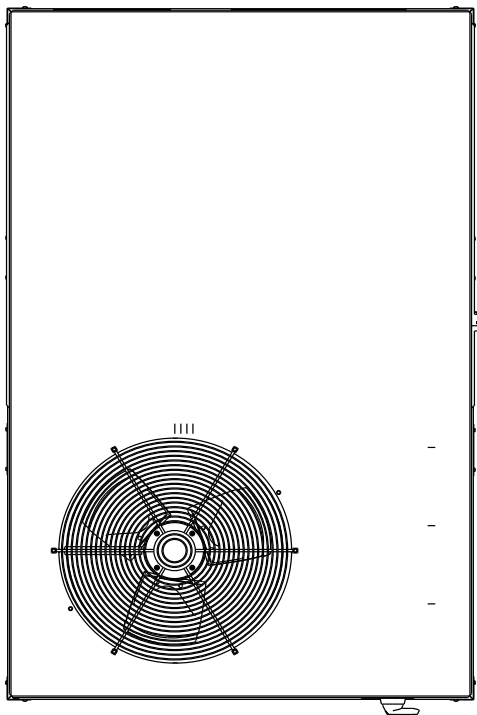


\* Complete warranty details available from your local dealer or at [www.daikincomfort.com](http://www.daikincomfort.com).

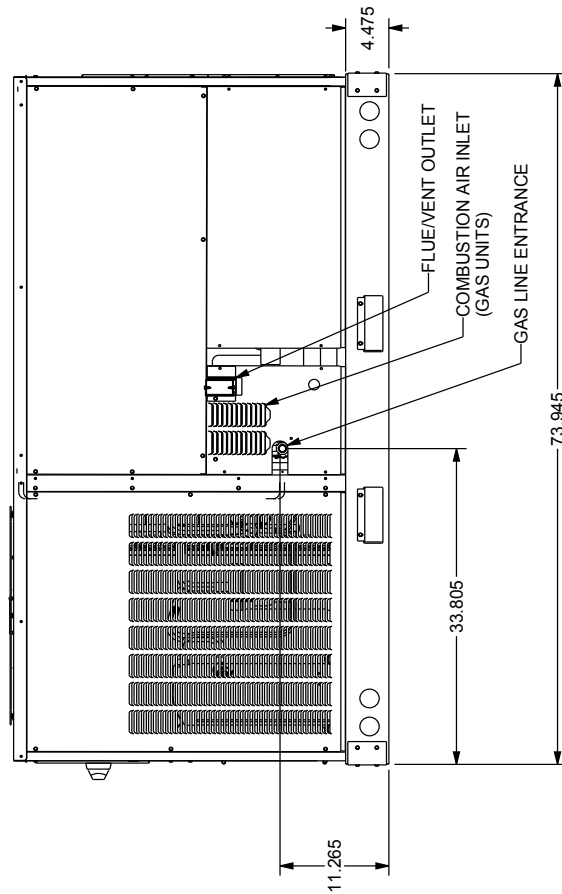
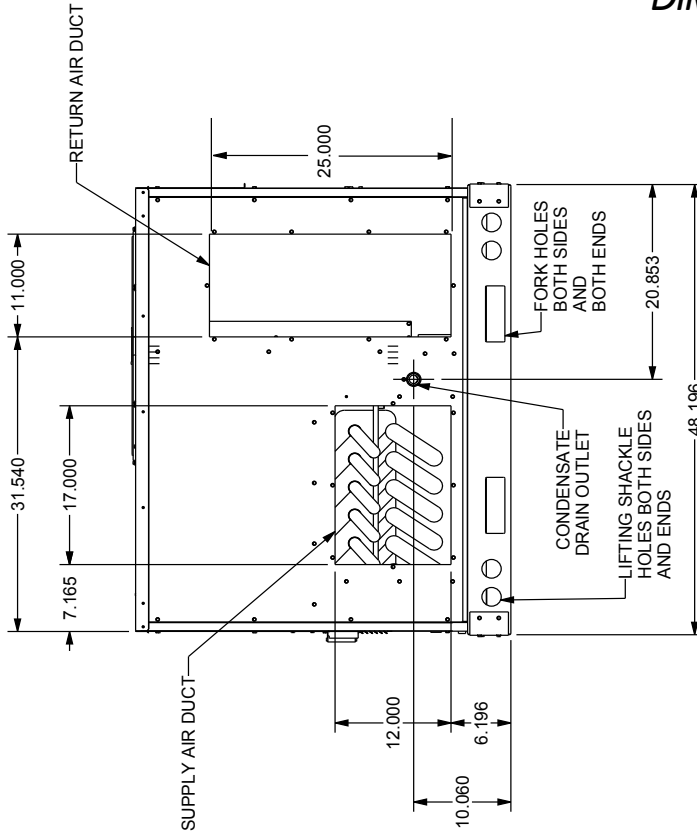
**PERFORMANCE DATA**

<b>Cooling Performance</b>		
Tota Capacity	_____	MBH
Sensible Capacity	_____	MBH
Outdoor Design TMP	_____	°F DB / WB
Air Temp entering	_____	
Evaporator Coil	_____	°F
Power Input Required (less blower motor)	_____	kW
<b>Heating Performance</b>		
Total Heating Capacity	_____	kW
	_____	BTU/h
<b>Supply Air Blower Performance</b>		
Total Supply Air	_____	CFM
Ext. Static Pressure	_____	IWG
Blower Speed	_____	RPM
Power Output Required	_____	BHP
Motor Ratings	_____	HP
Power Input Required	_____	kW
<b>Electrical Data</b>		
Power Supply	_____	
Total Unit Amps	_____	Amps
<b>Max Overcurrent Device:</b>		
Fuse	_____	Breaker _____
		Amps _____

# DIMENSIONS



TOP VIEW



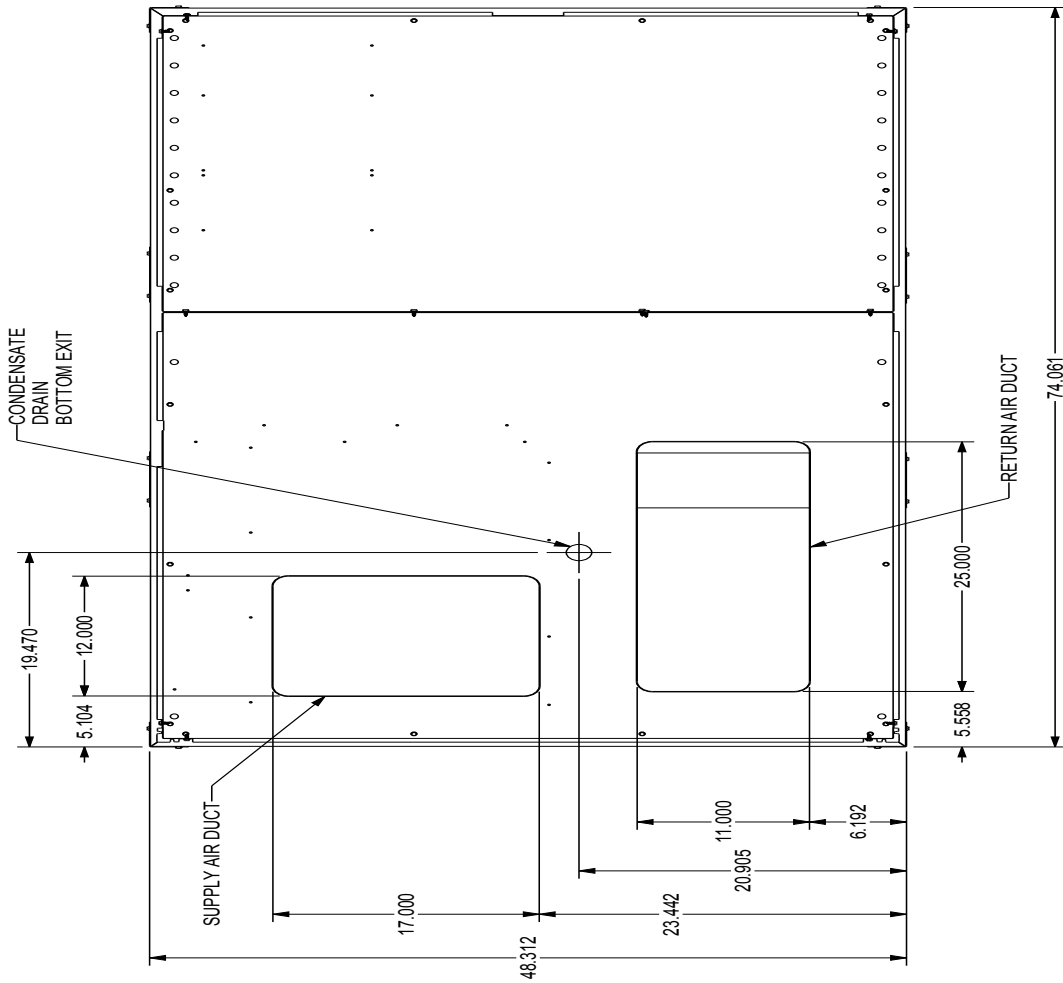
FRONT VIEW

**DT\*036-060\*\*\***  
 3 THRU 5-TON COMMERCIAL

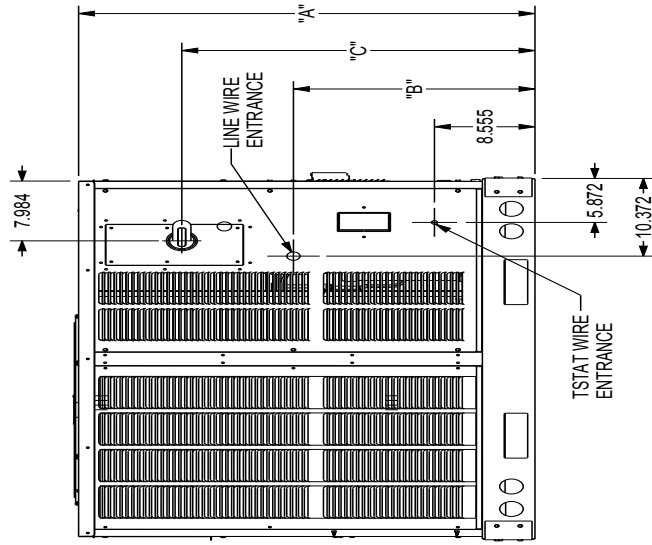
ALL DIMENSIONS GIVEN ARE IN INCHES  
 ALL DIMENSIONS AND SPECIFICATIONS ARE SUBJECT TO CHANGE WITHOUT NOTICE

# DIMENSIONS

MODEL TONNAGES	"A"	"B"	"C"
3-TON COMMERCIAL GAS, HT PUMP, AIR CONDITIONER	38.840	16.555	26.055
4-TON COMMERCIAL GAS, HT PUMP, AIR CONDITIONER	38.840	16.555	26.055
5-TON COMMERCIAL GAS, HT PUMP, AIR CONDITIONER	42.840	20.555	30.055



BASE PAN VIEW  
(VIEWED FROM TOP)



LEFT END VIEW

## ACCESSORIES LIST

DAIKIN MASTER ITEM #	DESCRIPTION	FITS MODEL SIZES	FIELD- INSTALLED	FACTORY- INSTALLED	✓
<b>Curb</b>					
14CURB3672	14" Roof Curb	3-5 tons	√		
18CURB3672B	18" Roof Curb	3-5 tons	√		
24CURB3672B	24" Roof Curb	3-5 tons	√		
GHRC-3672	Hurricane Restraint Clips	3-5 tons	√		
<b>Ultra Low-Leak Economizer &amp; Power Exhaust<sup>1</sup></b>					
10-365-09C	Ultra Low-Leak Downflow Economizer w/ Dry Bulb	3-5 Tons	√		
10-366-09C	Ultra Low-Leak Downflow Economizer w/ Enthalpy	3-5 Tons	√	√	
10-395-09	Ultra Low-Leak Horizontal Economizer w/ Dry Bulb	3-5 Tons	√		
10-396-09	Ultra Low-Leak Horizontal Economizer w/ Enthalpy	3-5 Tons	√		
10-455-09*-23	Centrifugal Power Exhaust 230v	3-5 Tons	√		
10-457-09xA-23	Modulating Power Exhaust 208-230v	3-5 Tons	√		
10-465-09-21	Prop Power Exhaust 230v	3-5 Tons	√		
<b>Low-Leak Economizer &amp; Power Exhaust<sup>2</sup></b>					
DDNECNJ3672C	Low-Leak Downflow Economizer	3-5 tons	√	√	
DPE36722	Downflow Power Exhaust (208/230 Volt)	3-5 tons	√		
DHZECNJ3672	Horizontal Economizer	3-5 tons	√		
DHPE36722	Horizontal Power Exhaust (208/230 Volt)	3-5 tons	√		
<b>Downflow Accessories</b>					
D25FD3672	25% Manual Fresh Air Damper	3-5 tons	√		
D25MFD3672	25% Motorized Fresh Air Damper	3-5 tons	√		
DDNBBS3672	Burglar Bar Sleeves with Supply & Return	3-5 tons	√		
DDNECNJ3672NR	Downflow Economizer2 w/o Barometric Relief	3-5 tons	√		
DDNSQRD3616	Downflow Square-to-Round Adapter (16" Round)	3 tons	√		
DDNSQRD487218	Downflow Square-to-Round Adapter (18" Round)	4-5 tons	√		
<b>Horizontal Accessories</b>					
DBRD3672	Horizontal Barometric Relief Damper	3-5 tons	√		
<b>Concentrics</b>					
CDK36	Concentric Duct Kit	3 tons	√		
CDK4872	Concentric Duct Kit	4-5 tons	√		
<b>DDC Accessories<sup>3</sup></b>					
	DDC communicating controller (built-in BACnet® MS/TP) includes Standard Room Sensor to be installed in field	3-5 tons		√	
10366D09C	DDC Ultra Low-Leak Downflow Economizer	3-5 tons	√	√	
10366D09	DDC Ultra Low-Leak Horizontal Economizer	3-5 tons	√		
10465DDC	Power Exhaust kit used with DDC Ultra Low-Leak Economizer	3-5 tons	√		
DLAKT01	Low-Ambient	3-5 tons	√	√	
LONKT01	LonWorks® card	3-5 tons	√		
3PMK01	Phase Monitor (3-Phase Only)	3-5 tons	√	√	

*ACCESSORIES LIST (CONT.)*

DAIKIN MASTER ITEM #	DESCRIPTION	FITS MODEL SIZES	FIELD- INSTALLED	FACTORY- INSTALLED	✓
DFSKT01	Dirty Filter Switch	3-5 tons	√		
	<b>Crankcase Heater Kits</b>				
0163R00002S	40W 230V	3 tons	√		
0130L00017S	70W 230V	4 - 5 tons	√		
	<b>High Efficiency Filters</b>				
0160L00203	High Efficiency MERV 13 Air Filter Nom. Size: 24x24x2; (Order Qty 1)	3 tons	√		
0160L00204	High Efficiency MERV 13 Air Filter Nom. Size: 14x20x2; (Order Qty 4)	4 tons	√		
0160L00205	High Efficiency MERV 13 Air Filter Nom. Size: 16x20x2; (Order Qty 4)	5 tons	√		
	<b>Misc Accessories</b>				
HAILGD03D	Condenser Coil Hail Guard	3-4 tons	√		
HAILGD04D	Condenser Coil Hail Guard	5 tons	√		
	Convenience Outlet: Non Powered	3-5 tons		√	
	Convenience Outlet: Powered	3-5 tons		√	
HA-02	High Altitude Kit	3-5 tons	√		
LPM-07	LP Conversion Kit (DTG036045 only)	3 tons	√		
LPM-08	LP Conversion Kit (DTG units only)	3-5 tons	√		
LAKT11	Low Ambient Kit, 208-230V - non-DDC	3-4 tons	√	√	
LAKT12	Low Ambient Kit, 208-230V - non-DDC	5 tons	√	√	
3PMNDK01	Phase Monitor (3-Phase Only) - Non DDC	3-5 tons	√	√	
	Smoke Detector (supply and/or return air)	3-5 tons		√	
	Hinged Panels	3-5 tons		√	
220-GX-001	Flue Extension Kit	3-6 tons	√		

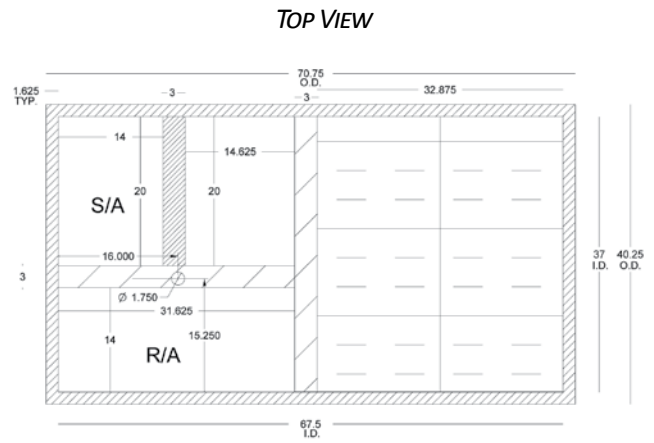
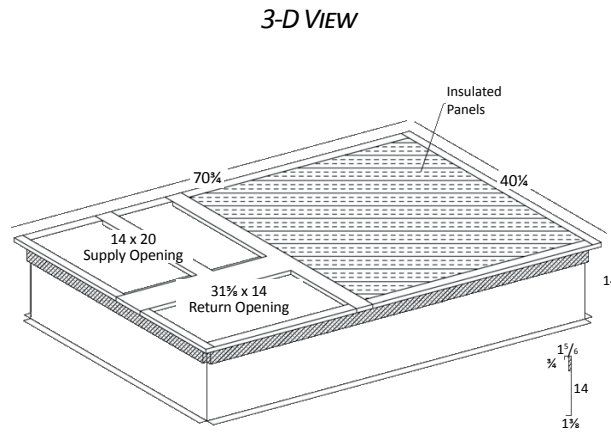
<sup>1</sup> Use Economizer & Power Exhaust listed within Ultra Low-Leak section

<sup>2</sup> Use Economizer & Power Exhaust listed within Low-Leak section

<sup>3</sup> For a full list of DDC accessories, please refer to DDC Controller Technical Guide manual (DK-DDC-TGD-01B)

**Note:** Where multiple variations are available, the heaviest combination is listed.

# ROOF CURB — #D14CURB3672



## SPECIFICATIONS

- 14" Tall
- 18-Gauge Construction
- 1x4 Wood Nailer
- Shipped knocked down with all hardware
- Gasket included
- Bed-rail style corners
- Weighs 95 lbs

Note: outside duct dimension should be 1/2" less than opening dimensions above.

## NO CURB ADAPTER REQUIRED WHEN REPLACING CARRIER & BRYANT MODELS

No curb adapter is required when replacing an existing Carrier or Bryant RTU with a Daikin RTU in these situations; the footprints and locations of the return and supply duct work match.

NEW UNIT	EXISTING CARRIER	EXISTING BRYANT
3 TO 5 TONS	48/50 TJ, LJ, DJ, QJ 48/50 TM, HJ 004 - 007	580C-D, 558C-D, 548C-D 580F, 558F, 581B 036 - 072

**MANUAL FRESH AIR DAMPER — #D25FD3672**

**MOTORIZED FRESH AIR DAMPER — #D25MFD3672**

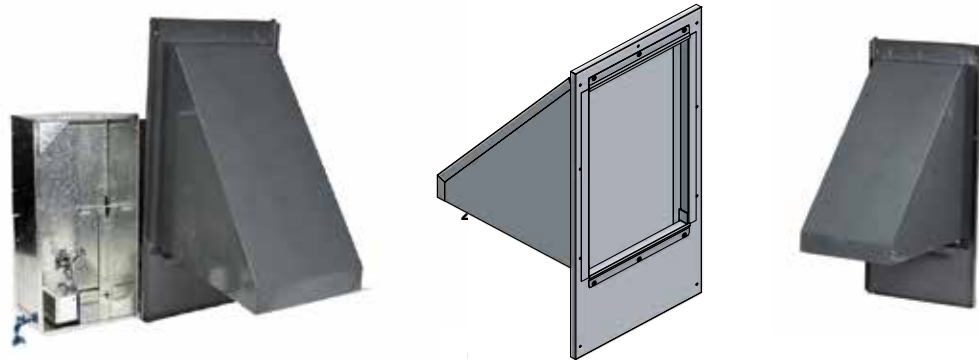
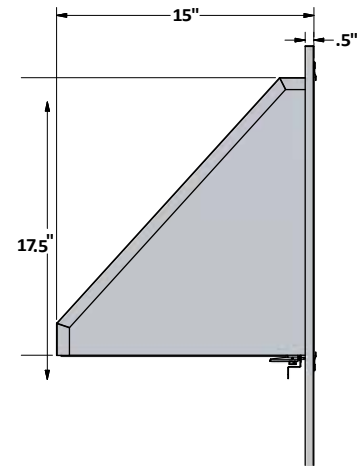
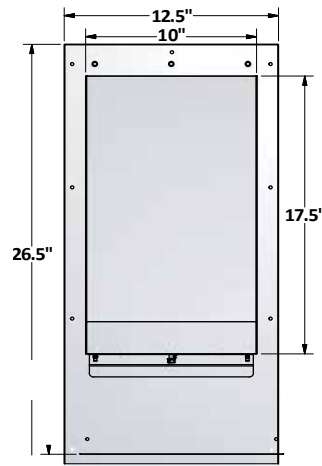
**SPECIFICATIONS**

**D25FD3672 Manual Damper**

- Provides up to 25% fresh air
- Slide damper for easy adjustment
- Weighs 12 pounds

**D25MFD3672 Motorized Damper**

- 24 VAC Damper motor with spring return
- Factory wired for easy connection
- Weighs 14 pounds
- Fits all 3 - 6 ton package units in all fuels
- All dampers painted to match daikin units



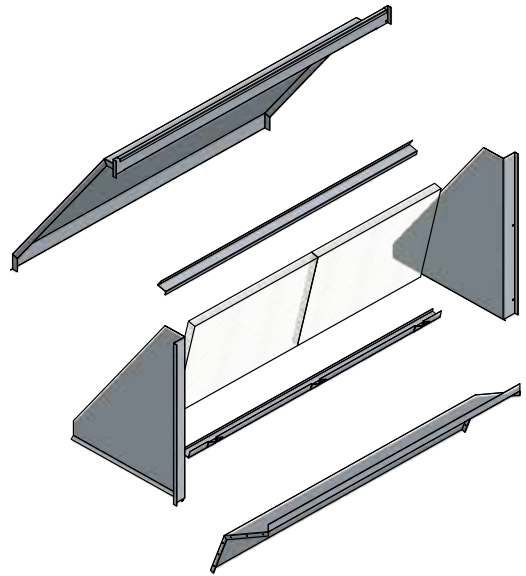
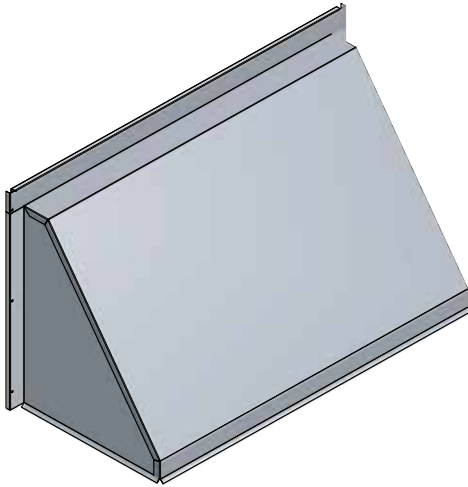
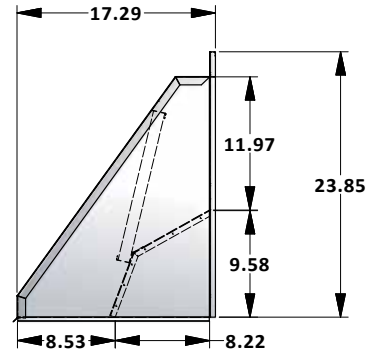
**HAIL GUARD — #HAILGDO\***



**SPECIFICATIONS**

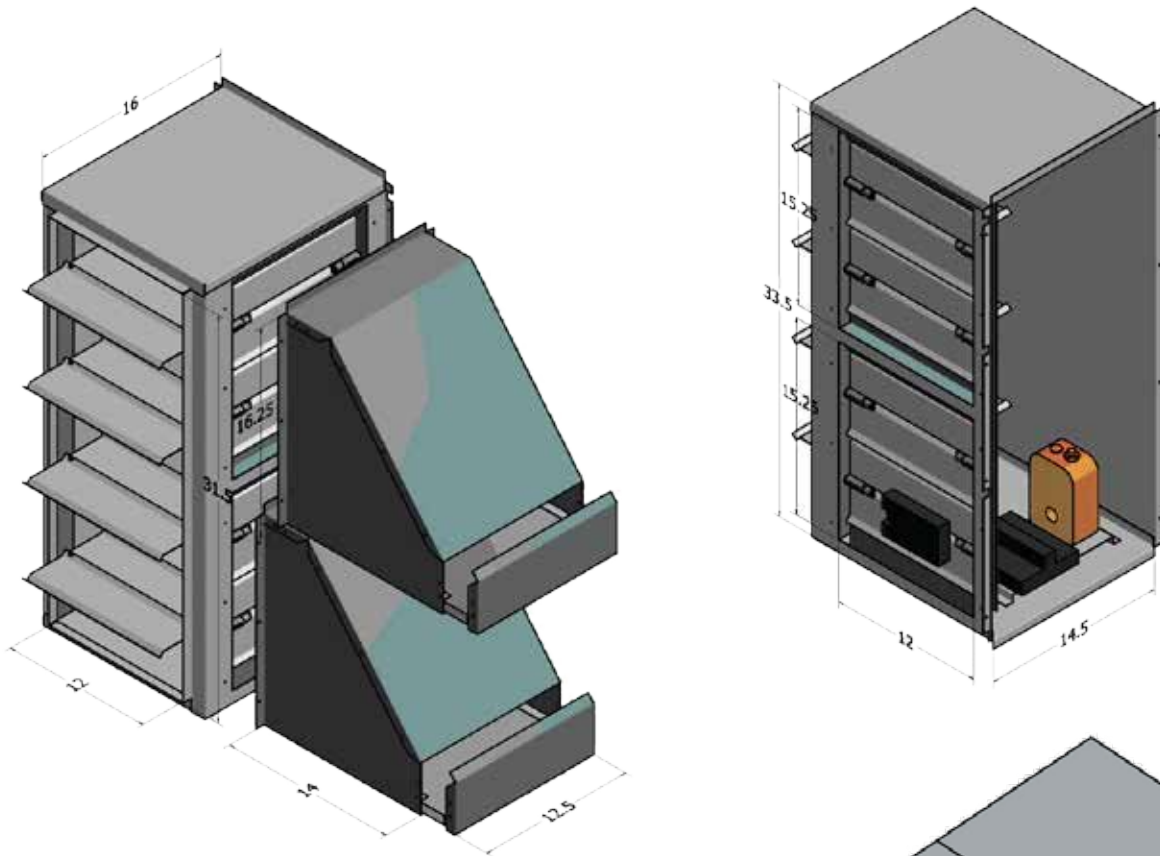
- Condenser coil protection
- Prevents hail damage
- Easy to remove and clean
- Powder paint finish



**DOWNFLOW ECONOMIZER — #DDNECNJ3672B****SPECIFICATIONS**

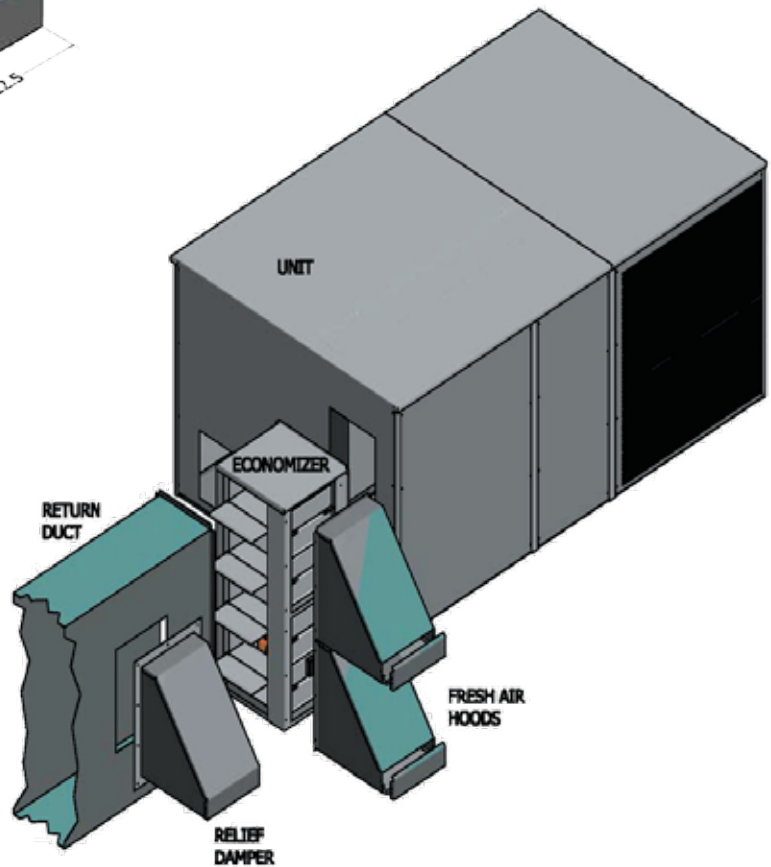
- Fully modulating
- Up to 100% fresh air
- Integral barometric relief
- Hoods painted to match unit
- Honeywell JADE economizer control
- Single adjustable enthalpy control convertible to dual enthalpy
- Adjustable minimum fresh air
- Fits all models, all fuel types 3-6 Ton DC series and 3-5 Ton DT series
- Weighs 65 lbs

# HORIZONTAL ECONOMIZER — #DHZECNJ3672

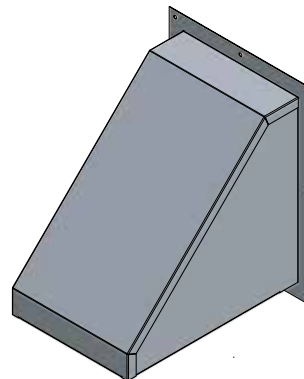
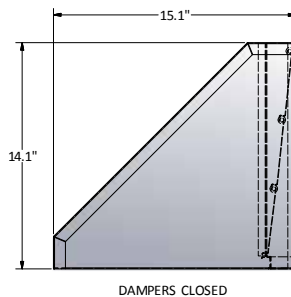
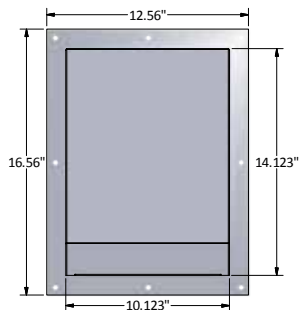


## SPECIFICATIONS

- Fully modulating
- Up to 100% fresh air
- Honeywell JADE economizer control
- Single adjustable enthalpy control convertible to dual enthalpy
- Factory wired for easy connection
- Adjustable minimum fresh air
- Fits all models, all fuel types 3-6 Ton DC series and 3-5 Ton DT series
- Weighs 75 lbs

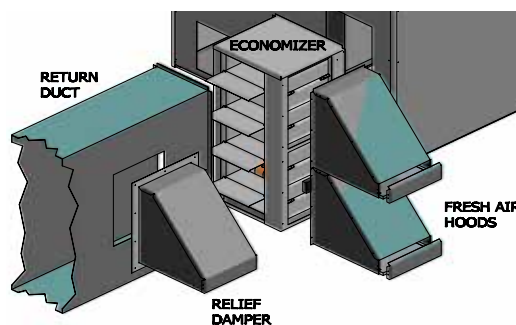
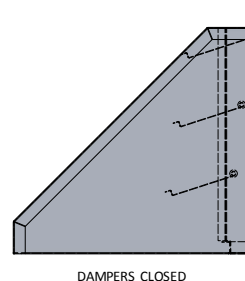


### BAROMETRIC RELIEF DAMPER — #DBRD3672

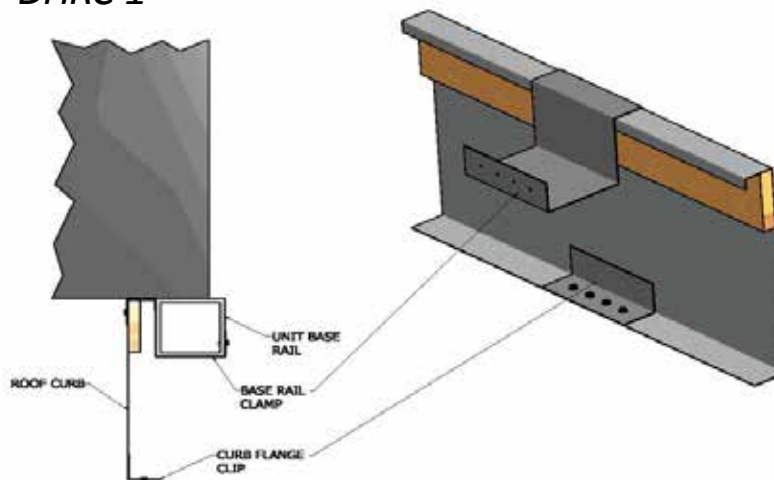


#### SPECIFICATIONS

- Applications up to 6 tons require one damper
- Applications from 7.5 - 12.5 tons require 2 damper
- Installed upstream of economizer return dampers in Horizontal applications
- Painted nickle gray to match Daikin equipment
- Weighs 15 pounds



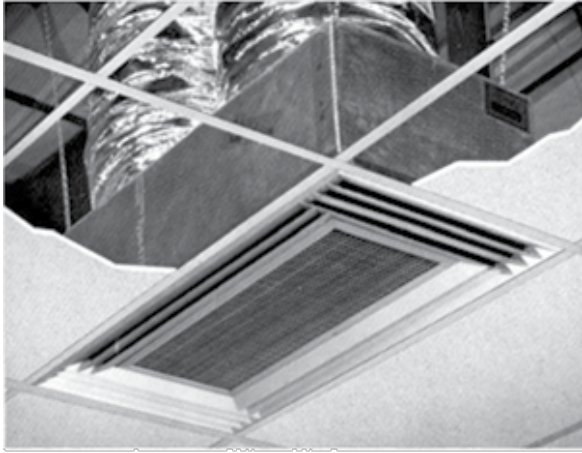
### HURRICANE / SEISMIC CLIP — DHRC-1



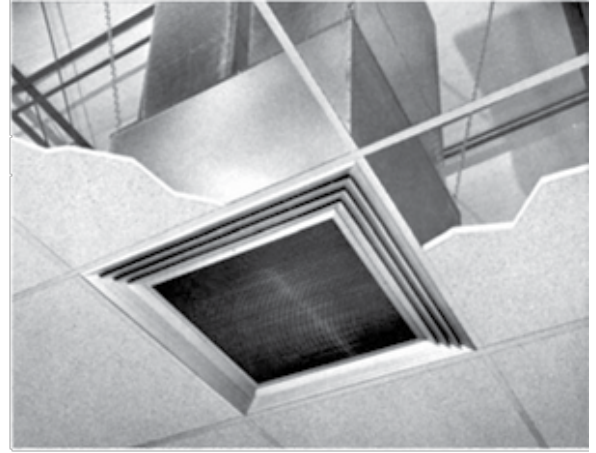
#### SPECIFICATIONS

- 14-gauge construction typical
- Location and quantity of clips dictated local code and unit size
- Optional angle for seismic applications
- Weigh 2 pounds each

### CONCENTRIC DUCT KIT — #CDK36 / #CDK4872



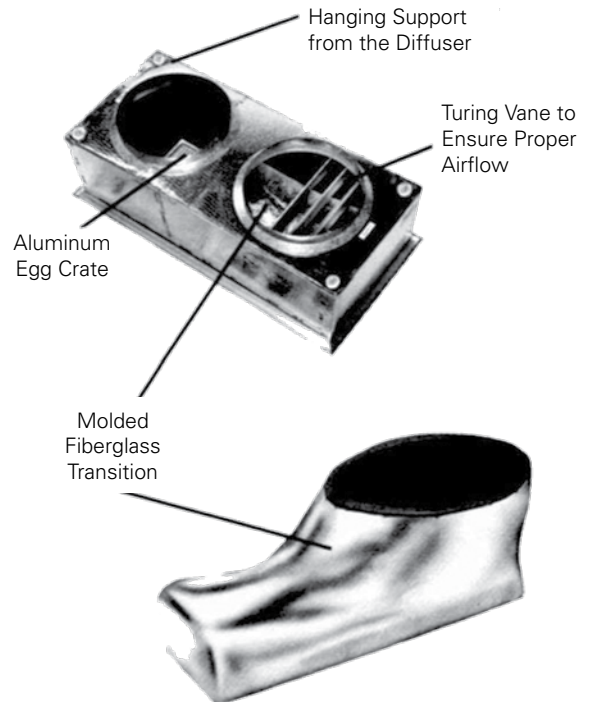
Light Commercial  
T-Bar Ceiling



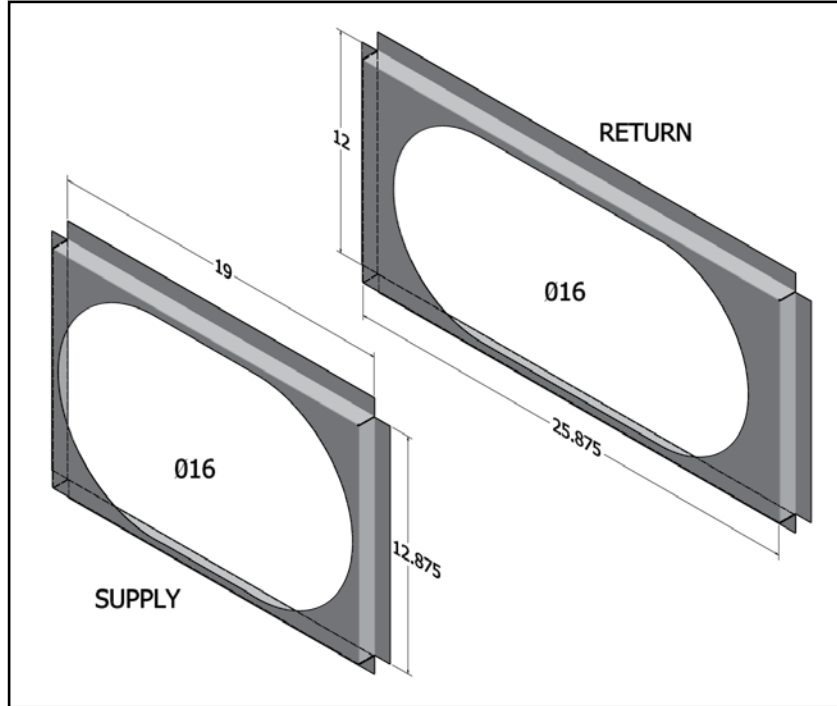
Commercial  
T-Bar Ceiling

#### SPECIFICATIONS

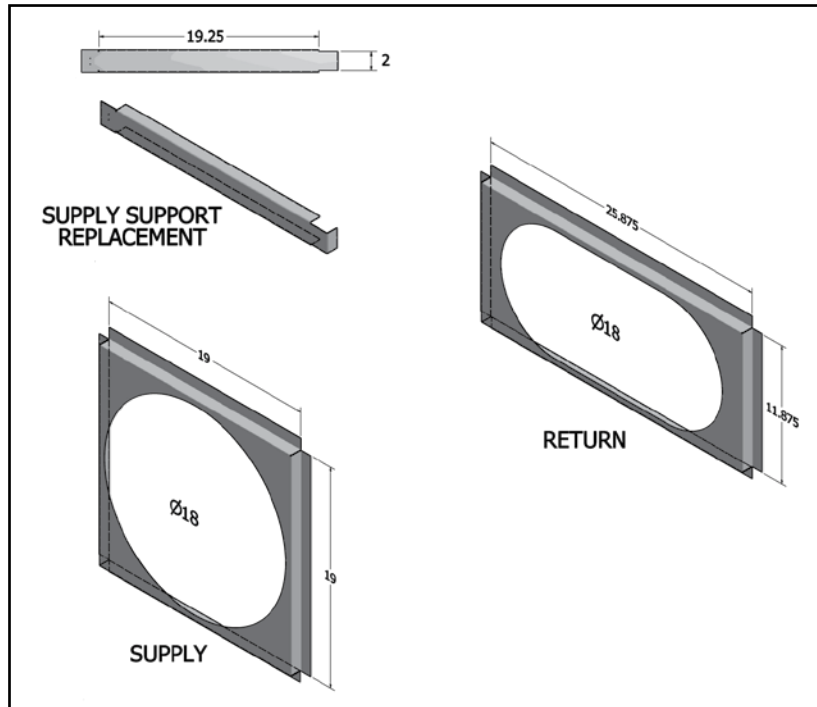
- All-aluminum diffuser with aluminum return air egg crate
- Built-in anti-sweat gasket
- Molded fiberglass transition (through five tons)
- Built-in hanging supports
- Diffuser box constructed of fiberglass duct board (through 7½ tons) or sheet metal



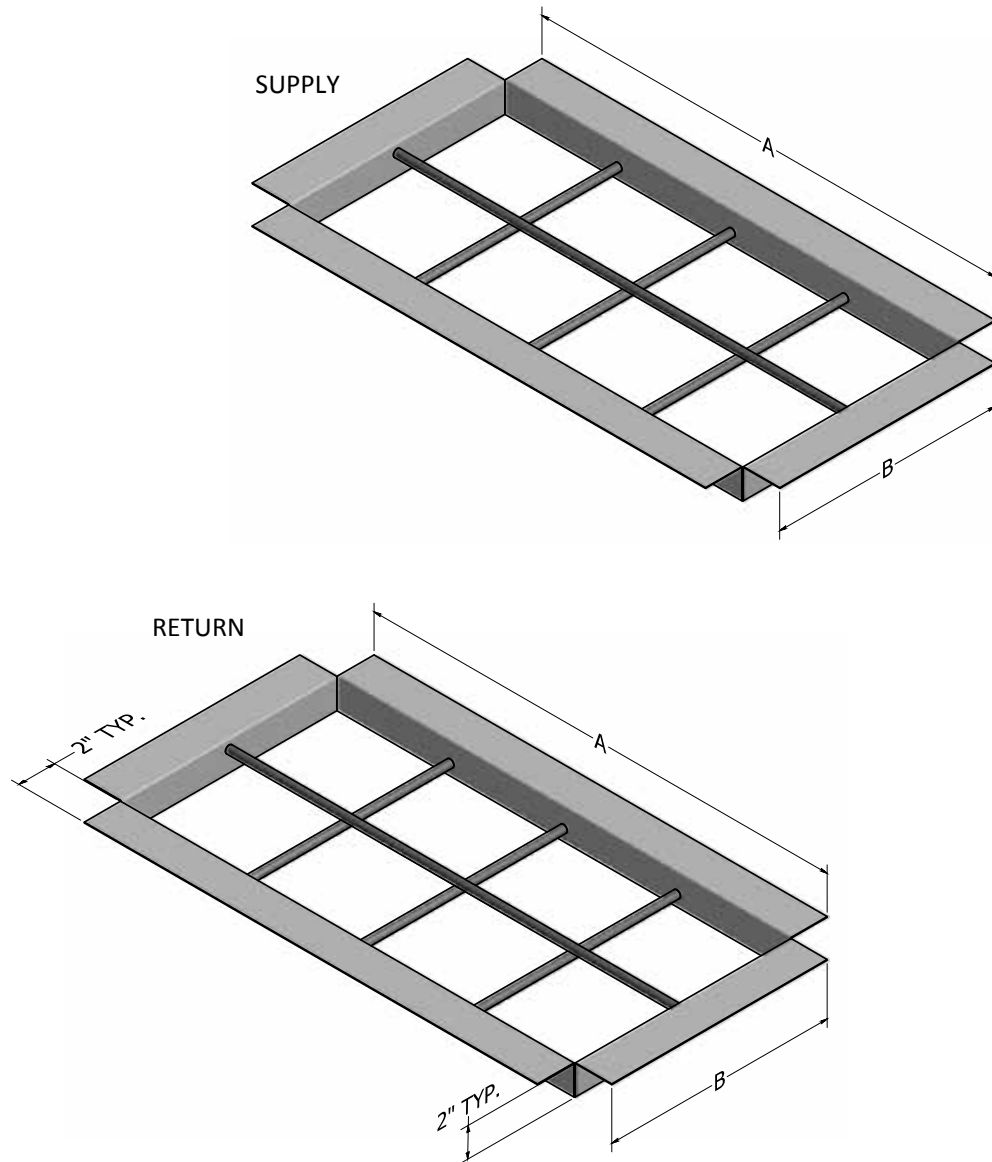
**3 - TON SQUARE-TO-ROUND — #DDNSQRD3616**



**4 - 5 TON SQUARE-TO-ROUND — #DDNSQRD487218**



### DOWNFLOW BURGLAR BAR SLEEVES – #DDNBBS3672

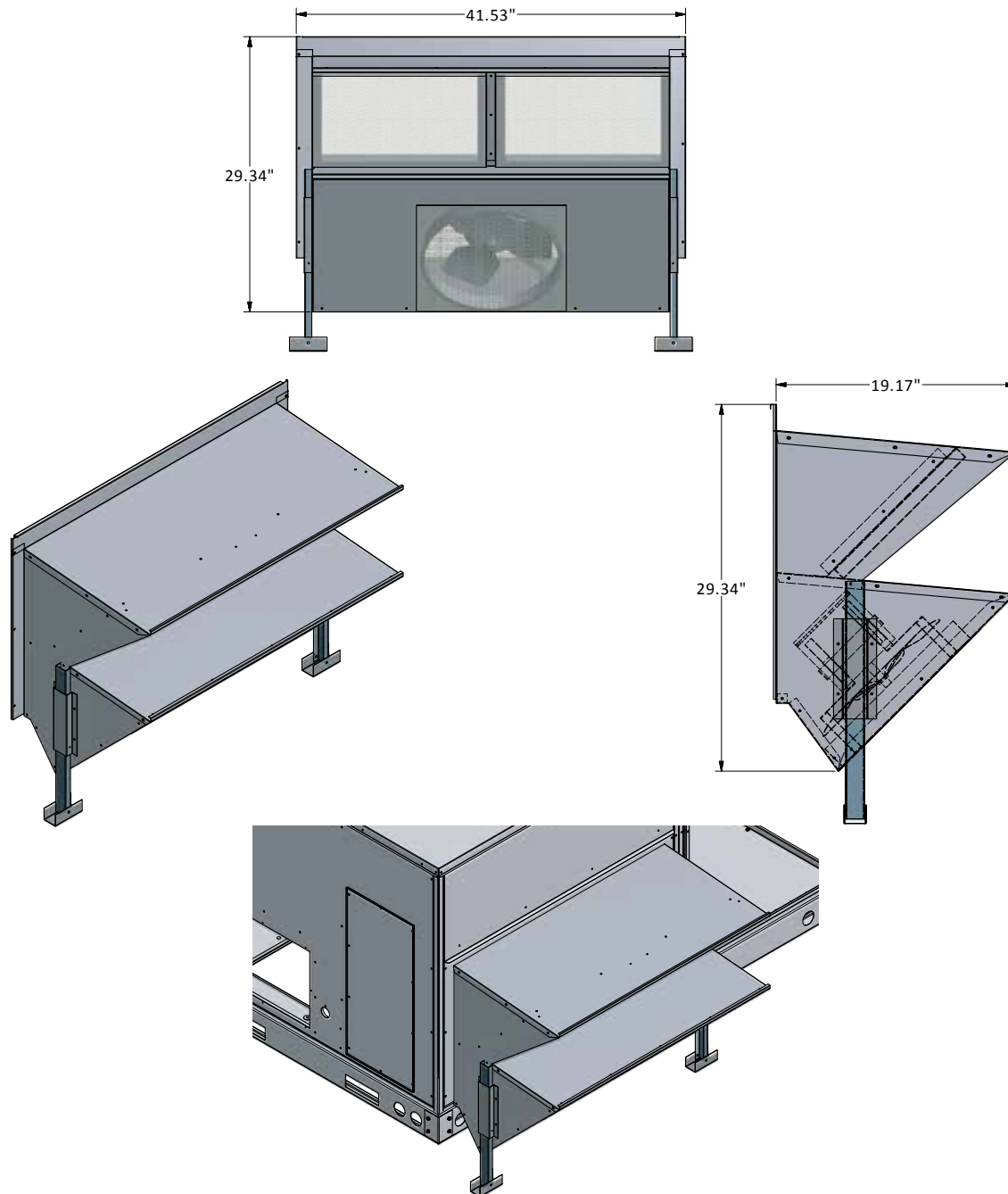


Part Number	Return 'A'	Return 'B'	Supply 'A'	Supply 'B'
DNBBS3672B	30 <sup>3</sup> / <sub>8</sub>	13 <sup>1</sup> / <sub>4</sub>	19 <sup>1</sup> / <sub>4</sub>	13 <sup>1</sup> / <sub>4</sub>
DNBBS90150	37 <sup>3</sup> / <sub>8</sub>	13 <sup>3</sup> / <sub>8</sub>	30 <sup>3</sup> / <sub>8</sub>	14 <sup>5</sup> / <sub>8</sub>
DNBBS180240	61 <sup>1</sup> / <sub>8</sub>	23 <sup>3</sup> / <sub>8</sub>	61 <sup>1</sup> / <sub>8</sub>	22 <sup>3</sup> / <sub>4</sub>

#### SPECIFICATIONS

- Fully Welded 18 Gauge Sleeve
- Fully Welded 1/2" Bars
- 8" Openings Standard
- Supply and Return Sleeves Packaged Together
- Install in the Top of the Roof Curb, Inside of the Supply and Return Duct Drops

## DOWNFLOW POWER EXHAUST – #DPE36722



### SPECIFICATIONS

- Propeller type fans
- 208/230V model available
- Used in conjunction with DDNECNJ3672B
- Up to 100% relief
- Replaces Outside Air/Barometric Relief Hood
- Weighs 58 Pounds

*NOTES*