




A	B	C	D	E	F	G	H	J	K	L							
BLADE TO MEET THE FOLLOWING SPECS WHEN MOUNTED ON 0.4995 ±.0002 DIA SHAFT WITH SET SCREW "B" TIGHTENED TO 40-45 OZ-IN TORQUE																	
BLADE WEB MATERIAL	SPIDER MATERIAL	DIM "G"	STYLE/ROTATION	DIM "F"	BLADE PITCH	NO. OF SET SCREWS REQ'D	DIM "D"	DIM "C" BASE TO EDGE	DIM "B" BLADE HEIGHT	"A" DIA	CONCENTRICITY T.I.R.	(TIP) ALIGN T.I.R.	STATIC BAL OZ-IN	DESCRIPTION (REF ONLY)	SUPPLIER P/N	SUPPLIER	PART NO.
ALUMINUM	STEEL		1 CW	1.06	30°	2	.38	1.43	4.27±.09	18.00	±.062	±.09	.15	BT 1830-3	BT 1830-3-1	BROOKSIDE/LAU	10625701
ALUMINUM	STEEL		2 CW	1.000	28°	2	.28	1.40	4.47±.13	18.0	±.062	.100	.18	T1803-28	6-7622	REVCOR	
ALUMINUM	STEEL		1 CW	1.250	28°	2	.38	1.62	4.44±.12	18.06±.12	±.15	----	.15	T10S95A 1828	60983701	LAU	10625702
ALUMINUM	STEEL		1 CW	1.06	30°	2	.38	1.50	4.40±.09	22.20	±.062	±.09	.25	BT 2230-3	BT 2230-3-1	BROOKSIDE/LAU	
ALUMINUM	STEEL		2 CW	1.250	28°	2	.47	1.15	4.47±.13	21.94	±.062	.110	.18	T2203-28	6-7069	REVCOR	10625703
ALUMINUM	STEEL		1 CW	1.250	28°	2	.38	1.60	4.47±.12	22.0±.18	±.18	----	.21	T10S95A 2228	60983801	LAU	
ALUMINUM	STEEL		1 CW	1.06	30°	1	.38	1.43	4.27±.09	18.00	±.062	±.09	.15	BT 1830-3	BT 1830-3-2	BROOKSIDE/LAU	10625704
ALUMINUM	STEEL		2 CW	1.000	28°	1	.28	1.40	4.47±.13	18.0	±.062	.100	.18	T1803-28	6-8194	REVCOR	
ALUMINUM	STEEL		1 CW	1.250	28°	1	.38	1.62	4.44±.12	18.06±.12	±.15	----	.15	T10S95A 1828	60983701	LAU	10625705
ALUMINUM	STEEL		1 CW	1.06	30°	1	.38	1.50	4.40±.09	22.20	±.062	±.09	.25	BT 2230-3	BT 2230-3-2	BROOKSIDE/LAU	
ALUMINUM	STEEL		2 CW	1.250	28°	1	.47	1.15	4.47±.13	21.94	±.062	.110	.18	T2203-28	6-8196	REVCOR	10625706
ALUMINUM	STEEL		1 CW	1.250	28°	1	.38	1.60	4.47±.12	22.0±.18	±.18	----	.21	T10S95A 2228	60983801	LAU	
ALUMINUM	STEEL		1 CW	1.06	20°	1	.38	.80	3.16	22.20	±.062	±.09	.25	BT 2220-3	BT 2220-3-1	BROOKSIDE	10625707
ALUMINUM	STEEL		2 CW	1.25	18°	1	.47	.34	2.93±.13	21.94	±.062	.110	.18	T2203-18	6-8362	REVCOR	
ALUMINUM	STEEL		1 CW	1.25	18°	1	.625	.88	2.98±.12	22.0±.18	±.18	----	.21	X90-29 T10S95A-2218	610130-01	LAU	10625708
ALUMINUM	STEEL		1 CW	1.06	34°	1	.38	1.76	4.95	22.20	±.062	±.09	.25	BT 2234-3	BT 2234-3-1	BROOKSIDE	
ALUMINUM	STEEL		2 CW	1.25	32°	1	.47	1.59	5.03±.13	21.94	±.062	.110	.18	T2203-32	6-8363	REVCOR	10625709
ALUMINUM	STEEL		1 CW	1.25	33°	1	.625	1.88	5.25±.12	21.94±.18	±.18	----	.21	X90-50 T10S95A-2233	610131-01	LAU	
ALUMINUM	STEEL		2 CW	1.25	20°	1	.47	.50	3.25±.12	25.94±.062	±.15	.062	.20	T2603-20	6-8244	REVCOR	10625710
ALUMINUM	STEEL		1 CW	1.25	19°	1	.625	1.00	3.38±.12	26.00±.09	±.18	----	.29	X93-42 T10S95-2619		LAU	
ALUMINUM	STEEL	1.04	2 CW	1.00	33°	1	.28	1.85	5.17±.13	18.00	±.062	±.10	.11	T1803-33	6-9059	REVCOR	10625711
ALUMINUM	STEEL	*	1 CW	1.25	33°	1	.625	1.74	4.59±.12	17.88±.18	±.12	----	.15	X96-067 T10S08A-1833	610381-01	LAU	
ALUMINUM	STEEL	.29	2 CW	1.00	26°	1	.28	1.10	4.17±.13	22.00±.06	±.062	±.11	.18	T2203-26	6-7067	REVCOR	10625712
ALUMINUM	STEEL	*	1 CW	1.25	26°	1	.625	1.31	3.78±.12	22.00±.09	±.12	----	.21	X96-090 T10S08A-2226	610382-01	LAU	
ALUMINUM	STEEL		2 CW	1.25	24°	1	.47	1.22	3.86±.13	25.92±.06	±.062	±.16	.20	T2603-24	6-9623	REVCOR	10625710

- NOTES:
 1. BALANCE BLADE WITH TABULATED NO. OF SET SCREWS (AMANA PT NO. M0210104).
 2. SHIP FAN BLADE WITH SET SCREW OR SCREWS (SEE TAB).
 3. WHEN VIBRATED ASSY MUST NOT RATTLE DUE TO COMPONENTS TOUCHING.
 4. ALL STEEL PTS TO BE ZINC PLATED .0003 DEEP MIN AND CHROMATE DIPPED, (ALTERNATE) SPIDER MAY BE ELECTRO-DEPOSITED ENAMEL OR EQUIVALENT PAINT FINISH, OR AZ50 GALVALUME COATED.
 5. FAN DIA "A" IS A CIRCLE TANGENT TO THE OUTER MOST EDGE OF EACH BLADE.
 * INFORMATION WAS NOT AVAILABLE AT THE TIME OF RELEASE.

CONFIDENTIAL PROPERTY OF THE GOODMAN FAMILY OF COMPANIES
 NOT TO BE DISCLOSED TO OTHERS, COPIED, OR USED FOR ANY PURPOSE EXCEPT AS AUTHORIZED IN WRITING. MUST BE RETURNED UPON DEMAND, ON COMPLETION OF ORDER OR OTHER PURPOSE FOR WHICH IT WAS LENT.

COMPONENTS AND MATERIALS SPECIFIED HEREIN WILL ALSO CONFORM TO THE APPLICABLE SECTION OF GOODMAN MSP 824.01 WORKMANSHIP STANDARD FOR FIT, FEEL AND FINISH.

SPECIAL CHARACTERISTICS:
 6SIGMA IS INDICATED BY , CRITICAL CHARACTERISTIC IS INDICATED BY , AND SIGNIFICANT DIMENSION IS INDICATED BY  PLACED NEXT TO THE DIMENSION AND/OR NOTE.

0802971	BM	SHT 8	REMOVED DWGS 10625733, 10625737, 10625738 & 0150M00010	PC	SJK	10-28-08	
0802377	BL	SHT 8	SHT 8 PT 10625733 CONCENTRICITY .062 WAS 1. DM "A" 21.90 WAS 22.00, SPIDER 088-076 WAS 072, BLADE 043-051 WAS 040 MIN, PT 10625737 STATIC .095 WAS .18, T.I.R. 150 WAS .110, DM "A" 21.88 WAS 21.94, DM "B" 2.94 WAS 2.93, SPIDER 088-076 WAS 072, BLADE 043-051 5052 H32 WAS 040 MIN, MILL, PT 10625738 STATIC .095 WAS .20, T.I.R. 160 WAS .150, DM "A" 25.98 WAS 25.94, DM "B" .13 WAS .12, SPIDER 084-092 WAS 088, BLADE 068-076 WAS 063 MIN, PT 0150M0010 STATIC .195 WAS 0.20, DM "A" 25.86 WAS 25.90, SPIDER 084-092 WAS 088, BLADE 068-076 WAS 063 MIN.	PC	JEA	7-25-08	
ER	PCN	REV	ZONE	DESCRIPTION	CHK	DR	DATE

THE GOODMAN® FAMILY OF COMPANIES

FAN-COND

TOLERANCES
 X ± .100
 XX ± .030
 XXX ± .015
 ANGLE ± 15°
 HOLE Ø ± .005
 BASED ON ASME Y14.5
 ALL DIMENSIONS IN INCHES
 UNLESS OTHERWISE NOTED.

DWN BY: R. PATTERSON 9/26/91 ENG: A. SCHNEBERGER DO NOT SCALE DRAWING
 CHK BY: B. PEPPER 12/7/92 DATE: 12/7/92 SHT 1 OF 8

106257

REV
BM

BLADE TO MEET THE FOLLOWING SPECS WHEN MOUNTED ON 0.4995 ± .0002 DIA SHAFT WITH SET SCREW "B" TIGHTENED TO 40-45 OZ-IN TORQUE

BLADE MATERIAL	SPIDER MATERIAL	DIM "G"	STYLE/ROTATION	DIM "F"	BLADE PITCH	NO. OF SET SCREWS REQ'D	DIM "D"	DIM "C" BASE TO EDGE	DIM "B" BLADE HEIGHT	"A" DIA	CONCENTRICITY T.I.R.	(TIP) ALIGN T.I.R.	STATIC BAL OZ-IN	DESCRIPTION (REF ONLY)	SUPPLIER P/N	SUPPLIER	PT NO
.040 MILL FINISH ALUMINUM	16 GA STEEL WITH GOLD HYBRID EPOXY FINISH OR ZINC PLATED & GOLD CHROMATE OR A250 GALVALUME COATED	*	*	*	*	*	*	*	*	*	*	*	*	*	*	BROOKSIDE/LAU	10625711
		.70	3 CW	1.00		122°	.28	1.51	3.94	18.00	.062	.130	.180	OA1802-22	6-9315	REVCOR	
.025 A250 GALVALUME COATED STEEL	16 GA STEEL WITH GOLD HYBRID EPOXY FINISH OR ZINC PLATED & GOLD CHROMATE OR A250 GALVALUME COATED	*	*	*	*	*	*	*	*	*	*	*	*	*	*	BROOKSIDE/LAU	10625712
		-.18	3 CW	1.00		118°	.28	.63	2.52	22.00	.062	.150	.190	UNT2202-18	6-9317	REVCOR	
INDIVIDUALLY PACKAGED SERVICE PART SAME AS GOODMAN PART NUMBER 10625712																	
.025 A250 GALVALUME COATED STEEL	16 GA STEEL WITH GOLD HYBRID EPOXY FINISH OR ZINC PLATED & GOLD CHROMATE OR A250 GALVALUME COATED	*	*	*	*	*	*	*	*	*	*	*	*	*	*	BROOKSIDE/LAU	10625713
		.10	2 CW	1.00		122°	.28	.91	3.04	22.00	.062	.150	.190	UNT2203-22	6-9797	REVCOR	
.040 MILL FINISH ALUMINUM	14 GA STEEL WITH GOLD HYBRID EPOXY FINISH OR ZINC PLATED & GOLD CHROMATE OR A250 GALVALUME COATED	*	*	*	*	*	*	*	*	*	*	*	*	*	*	BROOKSIDE/LAU	10625714
		-.54	3 CW	1.25		117°	.47	.52	1.98	26.00	.062	.160	.200	G2602-17	6-9772	REVCOR	
.025 A250 GALVALUME COATED STEEL	16 GA STEEL WITH GOLD HYBRID EPOXY FINISH OR ZINC PLATED & GOLD CHROMATE OR A250 GALVALUME COATED	*	*	*	*	*	*	*	*	*	*	*	*	*	*	BROOKSIDE/LAU	10625715
		.64	3 CW	1.00		129°	.28	.812	3.92	18.00	.062	.130	.180	UNT1802-29	6-9794	REVCOR	
.025 A250 GALVALUME COATED STEEL	MIN 16 GA STEEL WITH EPOXY FINISH IN GRAY OR GOLD	1.06	2 CW	1.00		127°	.28	1.84	4.51	18.00	.062	.130	.180	OA1803-27	600548	REVCOR	10625716
		-.25	1 CW	1.25		126°	.44	1.30	3.79	17.88 ± .18	*	*	.15	T10S08G-1826	61065101	LAU	
.038 MIN MILL FINISH ALUMINUM	14-16 GA STEEL WITH GOLD HYBRID EPOXY FINISH OR ZINC PLATED & GOLD CHROMATE OR A250 GALVALUME COATED	1.58	2 CW	1.00		137°	.28	2.39	5.52	18.00	.062	.130	.180	OA1803-37	6-9907	REVCOR	10625717
		1.12	2 CW	1.23		140°	.37	2.25	5.195	17.76	*	*	*	T10S08A-1840	611543	LAU	
.025 MIN A250 GALVALUME COATED STEEL	14-16 GA STEEL WITH GOLD HYBRID EPOXY FINISH OR ZINC PLATED & GOLD CHROMATE OR A250 GALVALUME COATED	1.92	3 CW	1.00		137°	.28	2.23	5.72	18.00	.062	.130	.180	UT1802-37	600046	REVCOR	10625718
		1.05	3 CW	1.23		138°	.37	2.16	4.975	17.843	*	*	*	S10S08G-1838	611544	LAU	
.023 MIN A250 GALVALUME COATED STEEL	14 GA STEEL WITH GOLD HYBRID EPOXY FINISH OR ZINC PLATED & GOLD CHROMATE OR A250 GALVALUME COATED	-.06	2 CW	1.25		124°	.47	1.00	3.86	22.00	.062	.150	.190	T2203-24	6-9971	REVCOR	10625719
		.04	2 CW	1.23		122°	.37	1.18	3.68	22.00	*	*	*	T10S95G-2222	611545	LAU	
.038 MIN MILL FINISHED ALUMINUM	14-16 GA STEEL WITH GOLD HYBRID EPOXY FINISH OR ZINC PLATED & GOLD CHROMATE OR A250 GALVALUME COATED	.76	3 CW	1.00		123°	.28	1.57	4.06	18.00	.062	.130	.180	OA1802-23	600019	REVCOR	10625720
		.41	3 CW	1.23		127°	.37	1.525	3.85	18.000	*	*	*	S10S08A-1827	611546	LAU	
.032 MIN MILL FINISHED ALUMINUM	14-16 GA STEEL WITH GOLD HYBRID EPOXY FINISH OR ZINC PLATED & GOLD CHROMATE OR A250 GALVALUME COATED	1.18	2 CW	1.00		130°	.28	1.99	4.82	18.00	.062	.130	.180	OA1803-30	600616	REVCOR	10625721
		.70	2 CW	1.23		133°	.37	1.84	4.47	17.88	*	*	*	T10S08A-1833	611547	LAU	

CONFIDENTIAL PROPERTY OF THE GOODMAN FAMILY OF COMPANIES NOT TO BE DISCLOSED TO OTHERS, COPIED, OR USED FOR ANY PURPOSE EXCEPT AS AUTHORIZED IN WRITING. MUST BE RETURNED UPON DEMAND, ON COMPLETION OF ORDER, OR OTHER PURPOSE FOR WHICH IT WAS LENT.

COMPONENTS AND MATERIALS SPECIFIED HEREIN WILL ALSO CONFORM TO THE APPLICABLE SECTION OF GOODMAN MSP 824.01 WORKMANSHIP STANDARD FOR FIT, FEEL AND FINISH.

SPECIAL CHARACTERISTICS: 6SIGMA IS INDICATED BY , CRITICAL CHARACTERISTIC IS INDICATED BY , AND SIGNIFICANT DIMENSION IS INDICATED BY  PLACED NEXT TO THE DIMENSION AND/OR NOTE.

THE GOODMAN® FAMILY OF COMPANIES

FAN-COND

DWN BY: R.PATTERSON 9/26/91 ENG: A. SCHNEBERGER DO NOT SCALE DRAWING
CHK BY: B. PEPPER 12/7/92 DATE: 12/7/92 SHT 2 OF 8

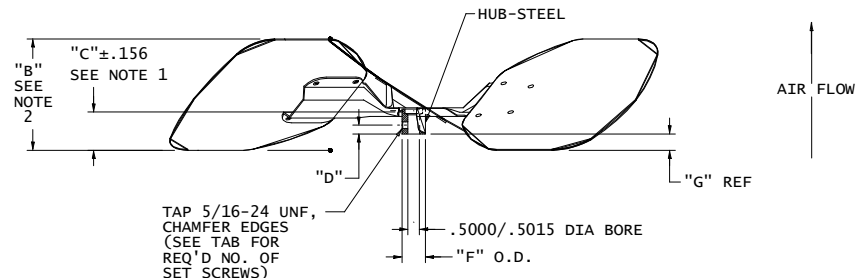
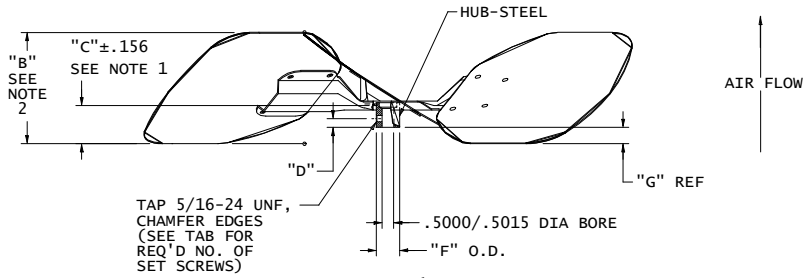
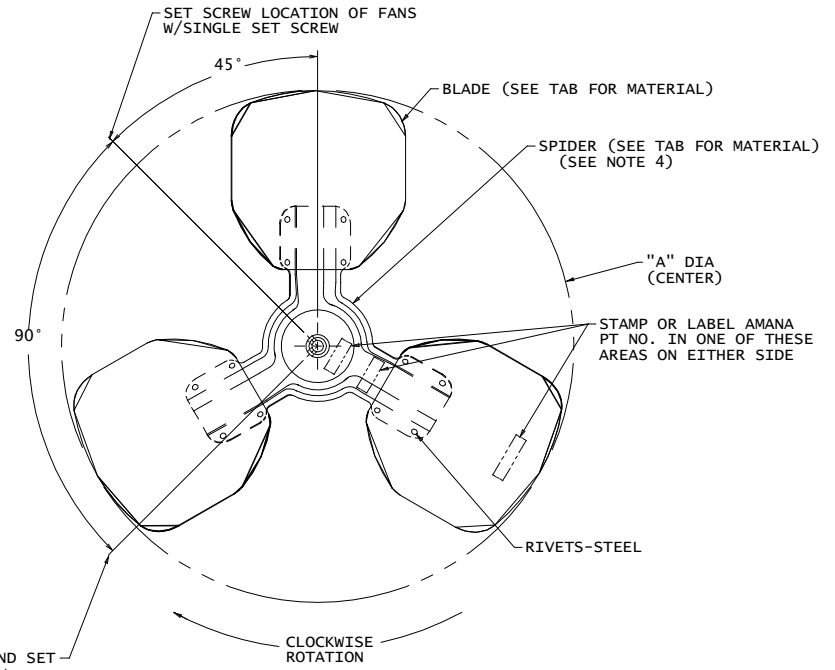
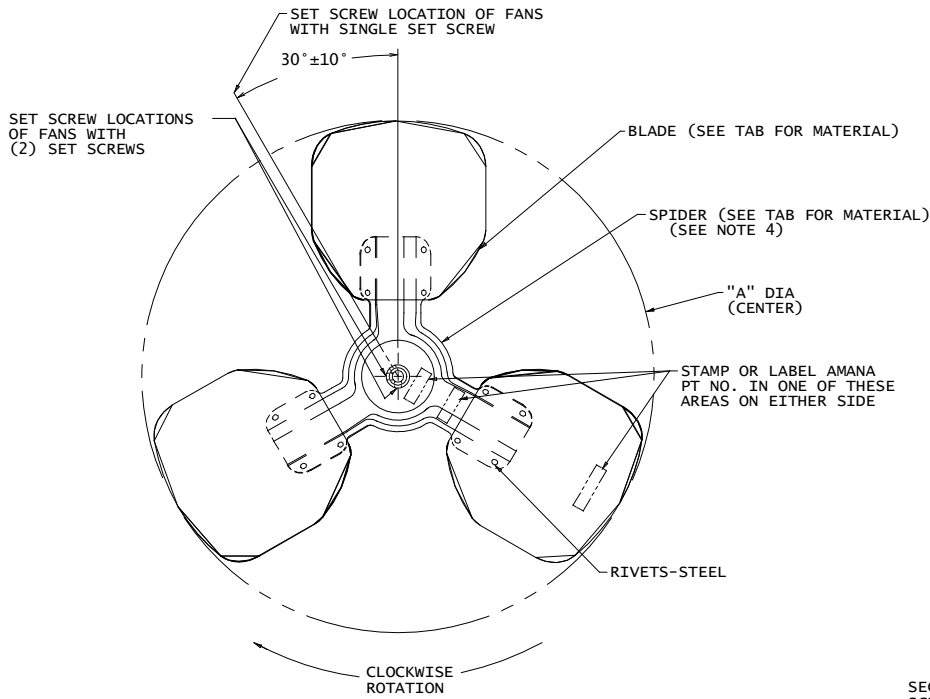
106257

REV BM

080297	BM	SHT 8	REMOVED DIMS 10625733, 10625737, 10625738 & 0150M00010	PC	SJK	10-28-08
080237	BL	SHT 8	SHT 8 PT 10625733 CONCENTRICITY .062 WAS 1. DIM "A" 21.90 WAS 22.00, SPIDER D88-076 WAS .072, BLADE 043-051 WAS .040 MIN, PT 10625737 STATIC .195 WAS .18, T.I.R. .150 WAS .110, DIM "A" 21.88 WAS 21.94, DIM "B" 2.94 WAS 2.93, SPIDER D88-076 WAS .072, BLADE 043-051 5052 H32 WAS .040 MIN, MILL, PT 10625738 STATIC .195 WAS .20, T.I.R. .160 WAS .150, DIM "A" 25.58 WAS 25.94, DIM "B" .13 WAS .12, SPIDER 084-092 WAS .088, BLADE 068-076 WAS .063 MIN, PT 0150M0010 STATIC .195 WAS .20, DIM "A" 25.86 WAS 25.90, SPIDER 084-092 WAS .088, BLADE 068-076 WAS .063 MIN.	PC	JEA	7-25-08
ER FCN	REV	ZONE	DESCRIPTION	CHK	DR	DATE

TOLERANCES
X : ± .00
XX : ± .030
XXX : ± .015
ANGLE : ± 15°
HOLE Ø : ± .005
BASED ON ASME Y14.5
ALL DIMENSIONS IN INCHES
UNLESS OTHERWISE NOTED.

A B C D E F G H J K L



STYLE 1

STYLE 2

- NOTES:
1. MEASUREMENT TAKEN FROM INTERSECTION OF SPIDER AND SET SCREW HUB.
 2. MEASUREMENT TAKEN AT WIDEST SECTION OF BLADE NEAR BLADES BASE.

CONFIDENTIAL PROPERTY OF THE GOODMAN FAMILY OF COMPANIES
NOT TO BE DISCLOSED TO OTHERS, COPIED, OR USED FOR ANY PURPOSE EXCEPT AS AUTHORIZED IN WRITING. MUST BE RETURNED UPON DEMAND, ON COMPLETION OF ORDER, OR OTHER PURPOSE FOR WHICH IT WAS LENT.

COMPONENTS AND MATERIALS SPECIFIED HEREIN WILL ALSO CONFORM TO THE APPLICABLE SECTION OF GOODMAN MSP 824.01 WORKMANSHIP STANDARD FOR FIT, FEEL AND FINISH.

SPECIAL CHARACTERISTICS

6SIGMA IS INDICATED BY σ_6 , CRITICAL CHARACTERISTIC IS INDICATED BY \diamond , AND SIGNIFICANT DIMENSION IS INDICATED BY \square PLACED NEXT TO THE DIMENSION AND/OR NOTE.

0802971	BM	SHT 8	REMOVED DWGS 10625733, 10625737, 10625738 & 0150M00010	PC	SJK	10-28-08	
0802377	BL	SHT 8	SHT 8 PT 10625733 CONCENTRICITY .062 WAS 1 DM "A" 21.90 WAS 22.00, SPIDER D88-076 WAS .072, BLADE 043-051 WAS .040 MIN PT 10625737 STATIC 195 WAS .18, TIR .150 WAS .110, DM "A" 21.88 WAS 21.94, DM "B" 2.94 WAS 2.93, SPIDER D88-076 WAS .072, BLADE 043-051 5052 H32 WAS .040 MIN MILL, PT 10625738 STATIC 195 WAS 20.1, TIR .160 WAS .150, DM "A" 25.86 WAS 25.94, DM "B" .13 WAS .12, SPIDER 084-092 WAS .088, BLADE 068-076 WAS .063 MIN, PT 0150M0010 STATIC 195 WAS 20, DM "A" 25.86 WAS 25.90, SPIDER 084-092 WAS .088, BLADE 068-072 WAS .063 MIN	PC	JEA	7-25-08	
ER	PCN	REV	ZONE	DESCRIPTION	CHK	DR	DATE

THE GOODMAN® FAMILY OF COMPANIES

FAN-COND

TOLERANCES
X : ± .001
XX : ± .030
XXX : ± .015
ANGLE : ± 15°
HOLE Ø : ± .005
BASED ON ASME Y14.5
ALL DIMENSIONS IN INCHES
UNLESS OTHERWISE NOTED.

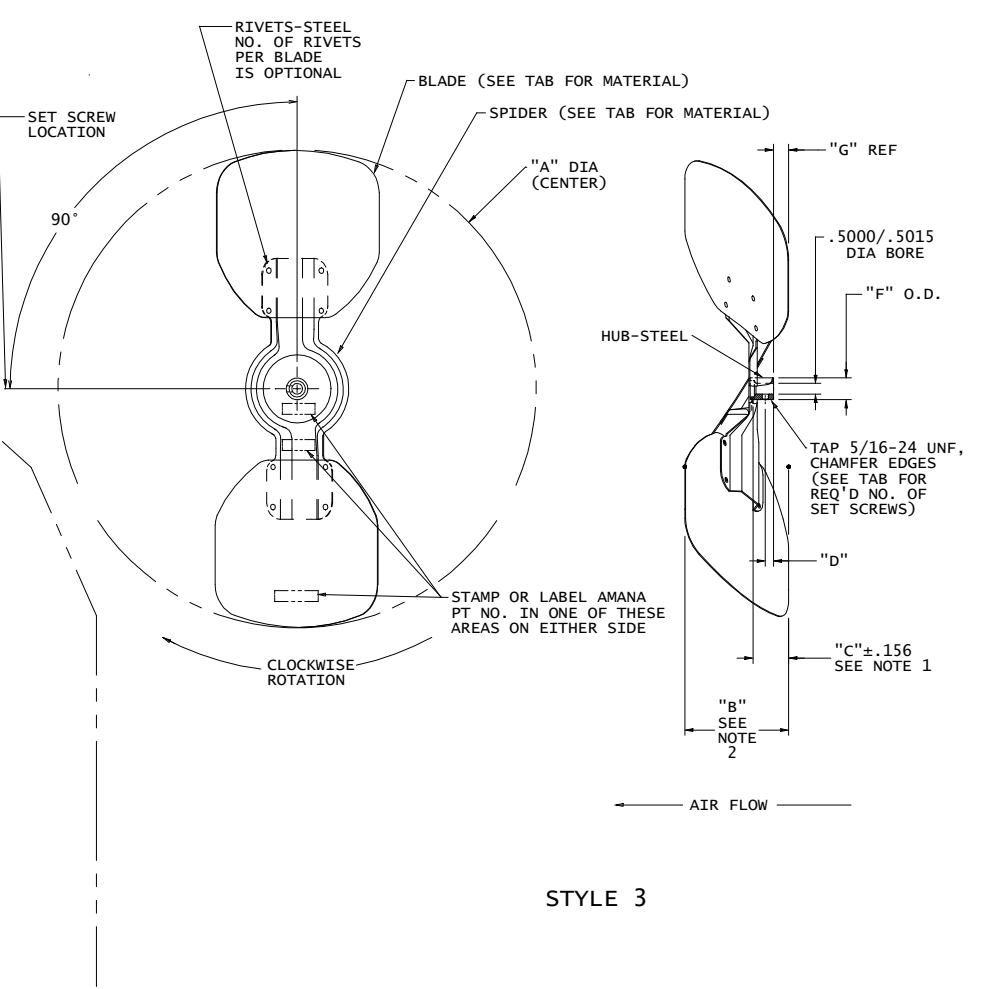
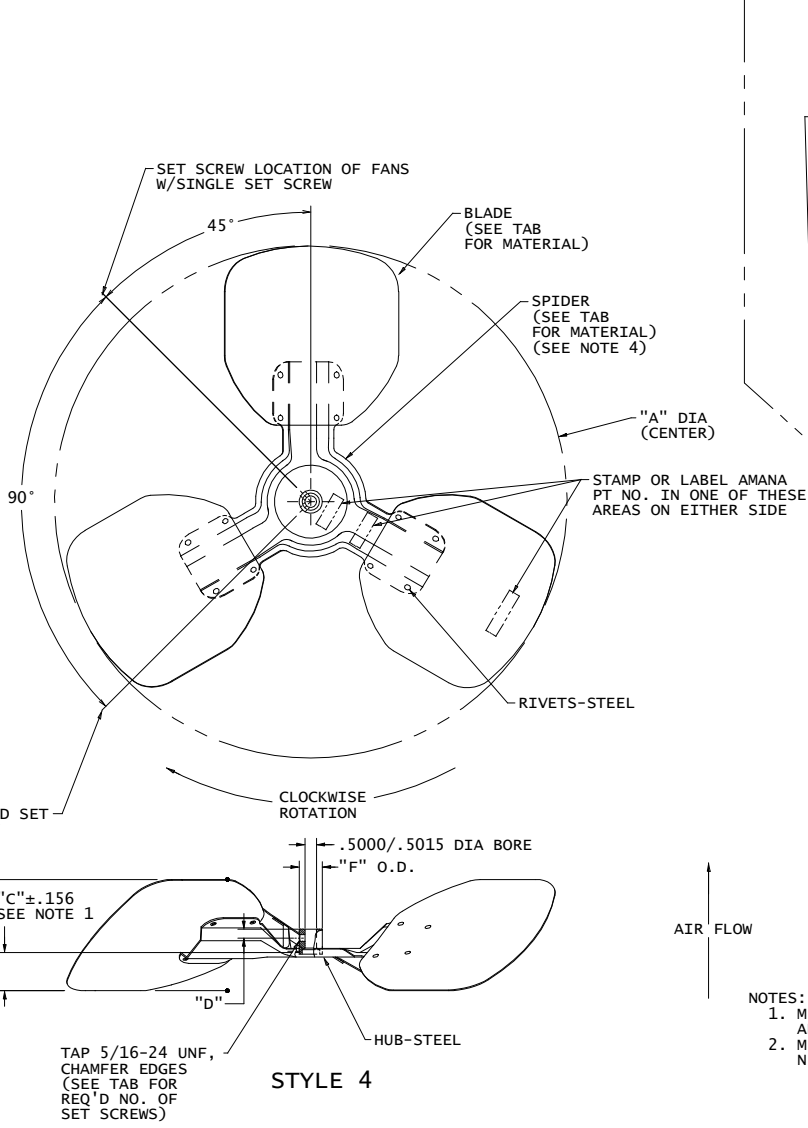
DWN BY: R.PATTERSON 10/9/96 ENG: R.C.T. DO NOT SCALE DRAWING
CHK BY: R.PATTERSON 10/17/96 DATE: 10/18/96 SHT 3 OF 8

106257

REV BM

A B C D E F G H J K L

A B C D E F G H J K L



- NOTES:
 1. MEASUREMENT TAKEN FROM INTERSECTION OF SPIDER AND SET SCREW HUB.
 2. MEASUREMENT TAKEN AT WIDEST SECTION OF BLADE NEAR BLADES BASE.

STYLE 3

CONFIDENTIAL PROPERTY OF THE GOODMAN FAMILY OF COMPANIES
 NOT TO BE DISCLOSED TO OTHERS, COPIED, OR USED FOR ANY PURPOSE EXCEPT AS AUTHORIZED IN WRITING. MUST BE RETURNED UPON DEMAND, ON COMPLETION OF ORDER, OR OTHER PURPOSE FOR WHICH IT WAS LENT.

COMPONENTS AND MATERIALS SPECIFIED HEREIN WILL ALSO CONFORM TO THE APPLICABLE SECTION OF GOODMAN MSP 824.01 WORKMANSHIP STANDARD FOR FIT, FEEL AND FINISH.

SPECIAL CHARACTERISTICS:
 6SIGMA IS INDICATED BY σ , CRITICAL CHARACTERISTIC IS INDICATED BY \square , AND SIGNIFICANT DIMENSION IS INDICATED BY \square PLACED NEXT TO THE DIMENSION AND/OR NOTE.

0802971	BM	SHT 8	REMOVED DWGS 10625733, 10625737, 10625738 & 0150M00010	PC	SJK	10-28-08	
0802377	BL	SHT 8	SHT 8 PT 10625733 CONCENTRICITY .062 WAS 1. DM 'A' 21.90 WAS 22.00, SPIDER 068-076 WAS .072, BLADE 043-051 WAS .040 MIN PT 10625737 STATIC 195 WAS 18, TIR 150 WAS 110, DM 'A' 21.88 WAS 21.94, DM 'B' 2.94 WAS 2.93, SPIDER 068-076 WAS .072, BLADE 043-051 5052 H32 WAS .040 MIN MILL, PT 10625738 STATIC 195 WAS 20, TIR 160 WAS 150, DM 'A' 25.68 WAS 25.94, DM 'B' 1.3 WAS 1.2, SPIDER 084-092 WAS .088, BLADE 068-076 WAS .063 MIN, PT 0150M0010 STATIC 195 WAS 20, DM 'A' 25.86 WAS 25.90, SPIDER 084-092 WAS .088, BLADE 068-076 WAS .063 MIN	PC	JEA	7-25-08	
ER	PCN	REV	ZONE	DESCRIPTION	CHK	DR	DATE

THE GOODMAN[®] FAMILY OF COMPANIES

FAN-COND

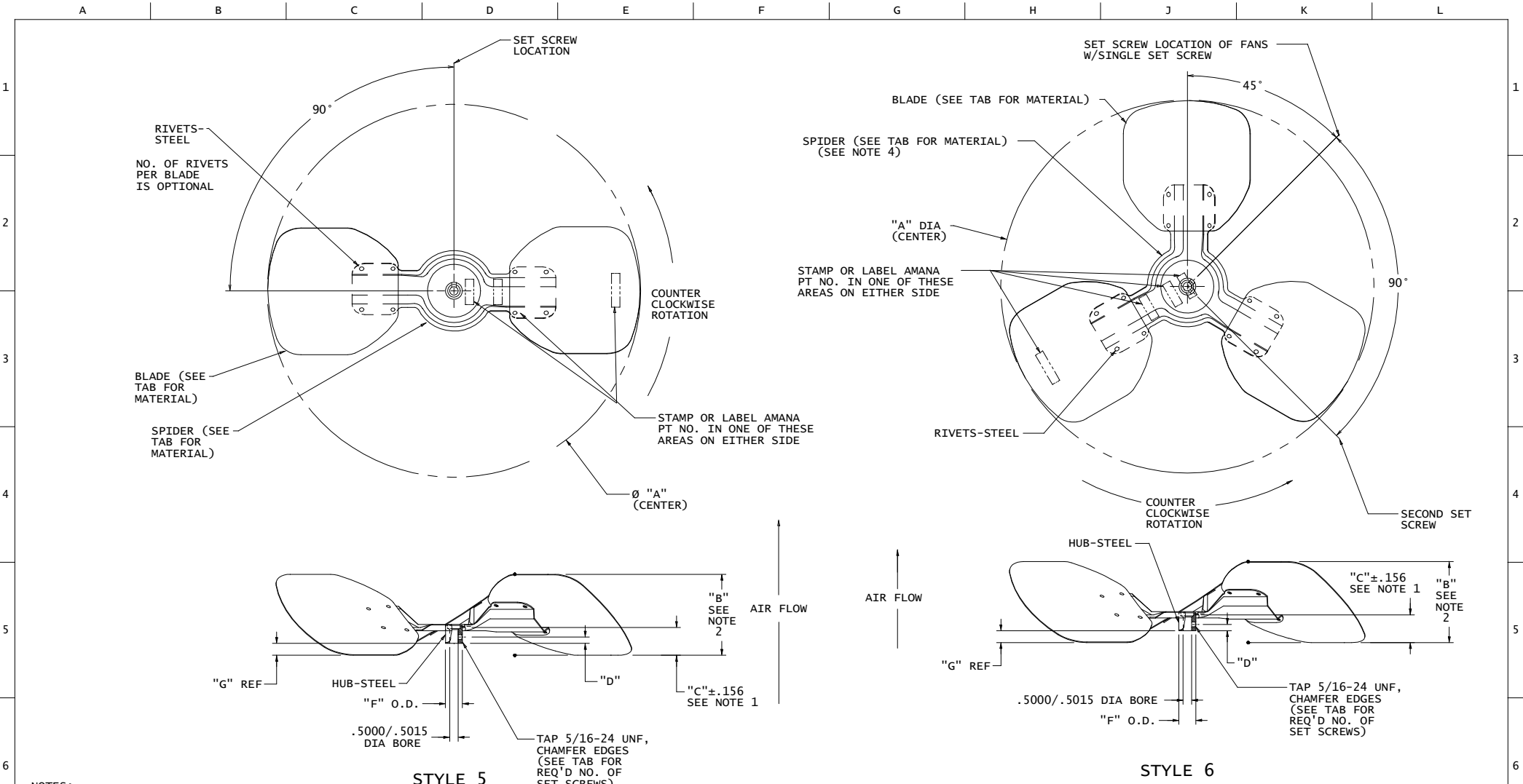
TOLERANCES
 X : ± .001
 XX : ± .030
 XXX : ± .015
 ANGLE : ± 15°
 HOLE Ø : ± .005
 BASED ON ASME Y14.5
 ALL DIMENSIONS IN INCHES
 UNLESS OTHERWISE NOTED.

DWN BY: R.PATTERSON 1/14/97 ENG: R.C.T. DO NOT SCALE DRAWING
 CHK BY: R.PATTERSON 1/14/97 DATE: 1/15/97 SHT 4 OF 8

106257

REV
 BM

A B C D E F G H J K L



- NOTES:
1. MEASUREMENT TAKEN FROM INTERSECTION OF SPIDER AND SET SCREW HUB.
 2. MEASUREMENT TAKEN AT WIDEST SECTION OF BLADE NEAR BLADES BASE.

CONFIDENTIAL PROPERTY OF THE GOODMAN FAMILY OF COMPANIES
 NOT TO BE DISCLOSED TO OTHERS, COPIED, OR USED FOR ANY PURPOSE EXCEPT AS AUTHORIZED IN WRITING. MUST BE RETURNED UPON DEMAND, ON COMPLETION OF ORDER, OR OTHER PURPOSE FOR WHICH IT WAS LENT.

COMPONENTS AND MATERIALS SPECIFIED HEREIN WILL ALSO CONFORM TO THE APPLICABLE SECTION OF GOODMAN MSP 824.01 WORKMANSHIP STANDARD FOR FIT, FEEL AND FINISH.

SPECIAL CHARACTERISTICS

6SIGMA IS INDICATED BY σ , CRITICAL CHARACTERISTIC IS INDICATED BY \square , AND SIGNIFICANT DIMENSION IS INDICATED BY \square PLACED NEXT TO THE DIMENSION AND/OR NOTE.

0802971	BM	SHT 8	REMOVED DWGS 10625733, 10625737, 10625738 & 0150M00010	PC	SJK	10-28-08
0802377	BL	SHT 8	SHT 8 PT 10625733 CONCENTRICITY .062 WAS 1 DM "A" 21.90 WAS 22.00, SPIDER 088-076 WAS 072, BLADE 043-051 WAS 040 MIN PT 10625737 STATIC 195 WAS 18, TIR 150 WAS 110, DM "A" 21.88 WAS 21.94, DM "B" 2.94 WAS 2.93, SPIDER 088-076 WAS 072, BLADE 043-051 5052 H32 WAS 040 MIN MILL, PT 10625738 STATIC 195 WAS 20, TIR 160 WAS 150, DM "A" 25.98 WAS 25.94, DM "B" 1.3 WAS 1.2, SPIDER 084-092 WAS 088, BLADE 068-076 WAS 063 MIN, PT 0150M0010 STATIC 195 WAS 20, DM "A" 25.86 WAS 25.90, SPIDER 084-092 WAS 088, BLADE 068-072 WAS 063 MIN	PC	JEA	7-25-08
ER	PCN	REV	ZONE	DESCRIPTION		

THE GOODMAN® FAMILY OF COMPANIES

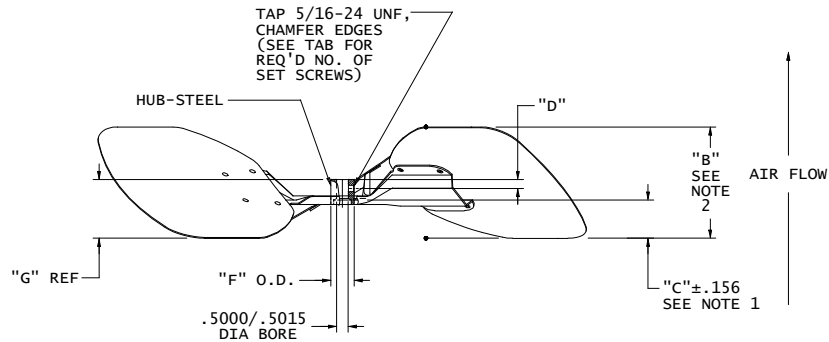
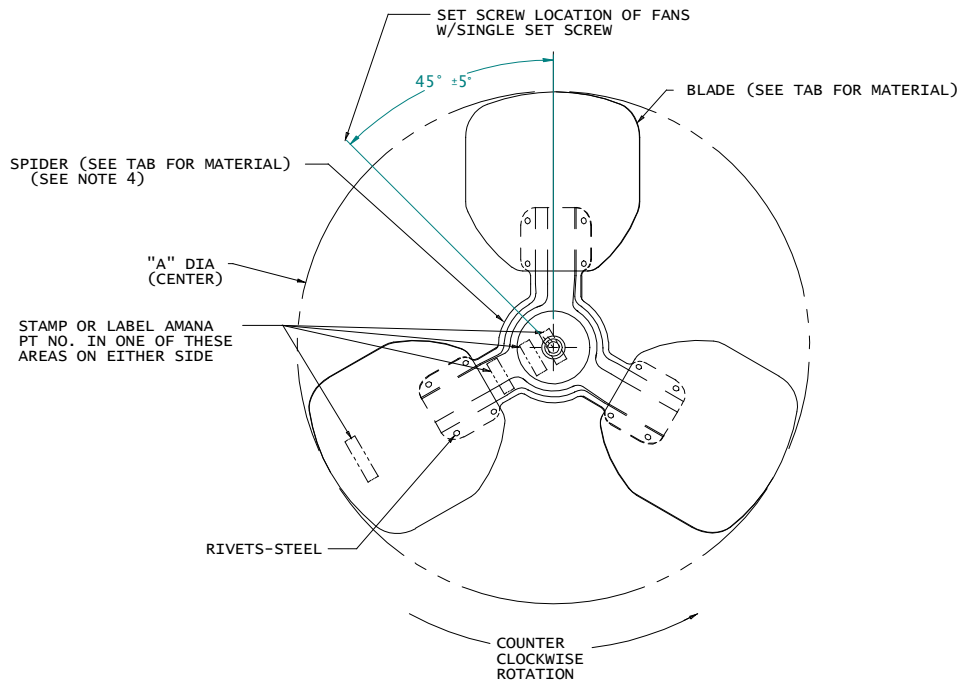
FAN-COND

DWN BY: D. MASSEY 5-18-01 ENG: G.G. 6/13/01 DO NOT SCALE DRAWING
 CHK BY: R. PATTERSON 5/18/01 DATE: SHT 5 OF 8

106257

REV
 BM

A B C D E F G H J K L



STYLE 7

- NOTES:
 1. MEASUREMENT TAKEN FROM INTERSECTION OF SPIDER AND SET SCREW HUB.
 2. MEASUREMENT TAKEN AT WIDEST SECTION OF BLADE NEAR BLADES BASE.

CONFIDENTIAL PROPERTY OF THE GOODMAN FAMILY OF COMPANIES
 NOT TO BE DISCLOSED TO OTHERS, COPIED, OR USED FOR ANY PURPOSE EXCEPT AS AUTHORIZED IN WRITING. MUST BE RETURNED UPON DEMAND, ON COMPLETION OF ORDER, OR OTHER PURPOSE FOR WHICH IT WAS LENT.

COMPONENTS AND MATERIALS SPECIFIED HEREIN WILL ALSO CONFORM TO THE APPLICABLE SECTION OF GOODMAN MSP 824.01 WORKMANSHIP STANDARD FOR FIT, FEEL AND FINISH.

SPECIAL CHARACTERISTICS

6SIGMA IS INDICATED BY σ , CRITICAL CHARACTERISTIC IS INDICATED BY \square , AND SIGNIFICANT DIMENSION IS INDICATED BY \square PLACED NEXT TO THE DIMENSION AND/OR NOTE.

0802971				BM	SHT 8	REMOVED DWGS 10625733, 10625737, 10625738 & 0150M00010	PC	SJK	10-28-08
0802377				BL	SHT 8	SHT 8 PT 10625733 CONCENTRICITY .062 WAS 1, DM 'A' 21.90 WAS 22.00, SPIDER 088-076 WAS 072, BLADE 043-051 WAS 040 MIN PT 10625737 STATIC 195 WAS 18, T.I.R. 150 WAS 110, DM 'A' 21.88 WAS 21.94, DM 'B' 2.94 WAS 2.93, SPIDER 088-076 WAS 072, BLADE 043-051 5052 H32 WAS 040 MIN MILL, PT 10625738 STATIC 195 WAS 20, T.I.R. 150 WAS 150, DM 'A' 25.58 WAS 25.94, DM 'B' 1.3 WAS 1.2, SPIDER 084-092 WAS 088, BLADE 068-076 WAS 063 MIN, PT 0150M0010 STATIC 195 WAS 20, DM 'A' 25.86 WAS 25.90, SPIDER 084-092 WAS 088, BLADE 068-072 WAS 063 MIN	PC	JEA	7-25-08
ER	PCN	REV	ZONE	DESCRIPTION			CHK	DR	DATE

THE GOODMAN[®] FAMILY OF COMPANIES

FAN-COND

DWN BY: D. MASSEY 5-18-01 | ENG: G.G. 6/13/01 | DO NOT SCALE DRAWING
 CHK BY: R. PATTERSON 5/18/01 | DATE: _____ | SHT 6 OF 8

106257

REV: _____ | BM

A B C D E F G H J K L

BLADE TO MEET THE FOLLOWING SPECS WHEN MOUNTED ON 0.4995 ± .0002 DIA SHAFT WITH SET SCREW "B" TIGHTENED TO 40-45 OZ-IN TORQUE																	
BLADE MATERIAL	SPIDER MATERIAL	DIM "G"	STYLE/ROTATION	DIM "H"	BLADE PITCH	NO. OF SET SCREWS REQ'D	DIM "D"	DIM "C" BASE TO EDGE	DIM "B" BLADE HEIGHT	"A" DIA	CONCENTRICITY T.I.R.	(TIP) ALIGN T.I.R.	STATIC BAL OZ-IN	DESCRIPTION (REF ONLY)	SUPPLIER P/N	SUPPLIER	PT NO
.032 MIN MILL FINISHED ALUMINUM	GALVALUME COATED 14-16 GA STEEL WITH GOLD HYBRID EPOXY FINISH OR ZINC PLATED & GOLD CHROMATE OR A250 GALVALUME COATED	1.00	2 CW	1.00	27°	1	.28	1.81	4.50	22.00	.062	.150	.190	0A2203-27	600617	REVCOR	10625722
		.42	2 CW	1.23	29°	1	.37	1.55	4.00	22.00	*	*	*	T10S08A-2229	611548	LAU	
.032 MIN MILL FINISHED ALUMINUM	14-16 GA STEEL WITH GOLD HYBRID EPOXY FINISH OR ZINC PLATED & GOLD CHROMATE OR A250 GALVALUME COATED	1.24	2 CW	1.00	31°	1	.28	2.05	4.92	22.00	.062	.150	.190	0A2203-31	600618	REVCOR	10625723
		.73	2 CW	1.23	33°	1	.37	1.855	4.525	22.00	.062	.150	.180	T10S08A-2233	611549	LAU	
.063 MIN MILL FINISHED ALUMINUM	13 GA COATED STEEL OR STEEL WITH POWERED COAT FINISH	- .63	2 CW	1.25	18°	1	.47	.430	2.94 ± .130	25.94 ± .062	± .062	.060	.200	T2603-18	602731	REVCOR	10625724
		INDIVIDUALLY PACKAGED SERVICE PART SAME AS GOODMAN PART NUMBER 10625724															REVCOR
.025 MIN AZ50 GALVALUME COATED STEEL	14-16 GA STEEL WITH GOLD HYBRID EPOXY FINISH OR ZINC PLATED & GOLD CHROMATE OR A250 GALVALUME COATED	1.05	5 CCW	1.23	38°	1	.37	2.160	4.975	17.843	.240	.090	.150	S10S08G-1838 CCW	611570-01	LAU	10625725
		.04	6 CCW	1.23	22°	1	.37	1.180	3.680	22.00	.360	.120	.210	T10S95G-2222 CCW	611568-01	LAU	10625726
.038 MIN MILL FINISHED ALUMINUM	14-16 GA STEEL WITH GOLD HYBRID EPOXY FINISH OR ZINC PLATED & GOLD CHROMATE OR A250 GALVALUME COATED	.41	5 CCW	1.23	27°	1	.37	1.525	3.850	18.000	.240	.090	.150	S10S08A-1827 CCW	611569-01	LAU	10625727
		ALUMINUM STEEL															TBD
.025 MIN MILL GALVALUME COATED STEEL	.047 COATED STEEL OR STEEL W/POWDER COAT	6 CCW		1.250	28°	1	.38	1.62	4.44 ± .12	18.060 ± .12	± .15	----	.150	T10S95A-1828 CCW		LAU	10625729
		6 CCW			29°	1					18.000				T10S08G-1829 CCW		LAU
.032 MIN MILL ALUMINUM	.078 NOM CQ G90 GALVANIZED STEEL	6 CCW		1.06	35°	1	.36	2.11	5.14 ± .12	17.90 ± .07	± .090	.130	.200	S3GA-1835 CCW	9001206	HESSAIRE	10625730
		6 CCW		1.06	27°	1	.36	1.38	3.20 ± .12	22.00 ± .07	± .090	.130	.250	S3GL-2227 CCW	9001207	HESSAIRE	10625731
.025 MIN MILL GALVALUME COATED STEEL	.047 COATED STEEL OR STEEL W/POWDER COAT	6 CCW		1.00	*	1	.28	*	*	22.06 ± .06	*	.130	.190	XW2203-34	604143	REVCOR	10625732
		6 CCW		1.06	35°	1	.36	2.11	5.14 ± .12	17.90 ± .07	± .090	.130	.200	S3GA-1835 CCW	9001208	HESSAIRE	10625733
.017 GALVALUME AZ55	.047 COATED STEEL OR STEEL WITH POWDER COAT FINISH	6 CCW		1.00	35°	1	.28	*	*	18.06 ± .06	*	.130	.190	XW1803-32	604948	REVCOR	10625734

CONFIDENTIAL PROPERTY OF THE GOODMAN FAMILY OF COMPANIES NOT TO BE DISCLOSED TO OTHERS, COPIED, OR USED FOR ANY PURPOSE EXCEPT AS AUTHORIZED IN WRITING. MUST BE RETURNED UPON DEMAND, ON COMPLETION OF ORDER, OR OTHER PURPOSE FOR WHICH IT WAS LENT.										0802971 BM SHT 8 REMOVED DWGS 10625733, 10625737, 10625738 & 0150M00010		PC SJK 10-28-08		THE GOODMAN® FAMILY OF COMPANIES					
COMPONENTS AND MATERIALS SPECIFIED HEREIN WILL ALSO CONFORM TO THE APPLICABLE SECTION OF GOODMAN MSP 824.01 WORKMANSHIP STANDARD FOR FIT, FEEL AND FINISH.										0802377 BL SHT 8 SHT 8 PT 10625733 CONCENTRICITY .062 WAS 1. DM "A" 21.90 WAS 22.00, SPIDER 088-076 WAS 072, BLADE 043-051 WAS 040 MIN, PT 10625737 STATIC 195 WAS 18, T.I.R. 150 WAS 110, DM "A" 21.88 WAS 21.94, DM "B" 2.94 WAS 2.93, SPIDER 088-076 WAS 072, BLADE 043-051 5052 H32 WAS 040 MIN, MILL, PT 10625738 STATIC 195 WAS 20, T.I.R. 150 WAS 150, DM "A" 25.58 WAS 25.94, DM "B" 1.9 WAS 1.2, SPIDER 084-092 WAS 088, BLADE 068-076 WAS 063 MIN, PT 0150M0010 STATIC 195 WAS 20, DM "A" 25.86 WAS 25.90, SPIDER 084-092 WAS 088, BLADE 068-076 WAS 063 MIN.		PC JEA 7-25-08		TOLERANCES X : ± .00 XX : ± .030 XXX : ± .015 ANGLE : ± 15° HOLE Ø : ± .005 BASED ON ASME Y14.5 ALL DIMENSIONS IN INCHES UNLESS OTHERWISE NOTED.					
SPECIAL CHARACTERISTICS 6SIGMA IS INDICATED BY , CRITICAL CHARACTERISTIC IS INDICATED BY , AND SIGNIFICANT DIMENSION IS INDICATED BY PLACED NEXT TO THE DIMENSION AND/OR NOTE.										ER PCN REV ZONE DESCRIPTION		CHK DR DATE		FAN-COND DWN BY D. MASSEY 5-18-01 ENG DATE DO NOT SCALE DRAWING SHT 7 OF 8 106257					

A	B	C	D	E	F	G	H	J	K	L
---	---	---	---	---	---	---	---	---	---	---

BLADE TO MEET THE FOLLOWING SPECS WHEN MOUNTED ON 0.4995 ± .0002 DIA SHAFT WITH SET SCREW "B" TIGHTENED TO 40-45 OZ-IN TORQUE																	
BLADE MATERIAL	SPIDER MATERIAL	DIM "G"	STYLE/ROTATION	DIM "F"	BLADE PITCH	NO. OF SET SCREWS REQ'D	DIM "D"	DIM "C" BASE TO EDGE	DIM "B" BLADE HEIGHT	"A" DIA	CONCENTRICITY T.I.R.	(TIP) ALIGN T.I.R.	STATIC BAL OZ-IN	DESCRIPTION (REF ONLY)	SUPPLIER P/N	SUPPLIER	PT NO
.043-.051 MIN MILL ALUMINUM	.093 NOM CQ G90 GALVANIZED STEEL		6 CCW	1.06	37°	1	.36	2.02	4.22±.12	22.00 ± .07	±.090	.130	.250	S3GA-2237 CCW	9001229	HESSAIRE	10625733
	.068-.076 COATED STEEL	.30	6 CCW	1	*	1	28	3.40±.13	4.51±.15	21.9±.06	.062	.150	.195	T2203-2B	604902	REVCOR	
.040 MIN MILL ALUMINUM	.093 NOM CQ G90 GALVANIZED STEEL		6 CCW	1.06	33°	1	.36	1.71	3.82±.12	22.00 ± .07	±.090	.130	.250	S3GL-2233 CCW	9001230	HESSAIRE	10625734
.051 MIN MILL ALUMINUM	.123 NOM CQ G90 GALVANIZED STEEL		6 CCW	1.06	22°	1	.36	2.27	3.61±.12	26.00 ± .07	±.120	.130	.350	S3GA-2622 CCW	9001231	HESSAIRE	10625735
.051 MIN MILL ALUMINUM	.123 NOM CQ G90 GALVANIZED STEEL	2	CW	1.06	22°	1	.36	2.27	3.61±.12	26.00 ± .07	±.120	.130	.350	S3GA-2622 CW	9001232	HESSAIRE	10625736
.043-.051 5052 H32 ALUMINUM	.068-.076 STEEL WITH PLATED OR POWDER COATED FINISH		6 CCW	1.25	18°	1	.47	.34	2.94±.13	21.88	±.062	.150	.195	T2203-18	604438	REVCOR	10625737
.068-.076 MILL ALUMINUM	.084-.092 STEEL WITH PLATED OR POWDER COATED FINISH		6 CCW	1.25	20°	1	.47	.50	3.25±.13	25.88 ± .06	±.062	.160	.195	T2603-20	604439	REVCOR	10625738
.050 MIN MILL ALUMINUM	.088 STEEL WITH PLATED OR POWDER COATED FINISH		6 CCW	1.25	32°	1	.47	1.59	5.03±.13	21.94	±.062	.110	.18	T2203-32	604460	REVCOR	10625739
.068-.076 MILL ALUMINUM	.084-.092 STEEL WITH PLATED OR POWDER COATED FINISH	1.84	7 CCW	1.25	20°	1	.47	.78	3.25±.13	25.88 ± .06	.062	.160	.195	T2603-20	605655	REVCOR	0150M00010

CONFIDENTIAL PROPERTY OF THE GOODMAN FAMILY OF COMPANIES
 NOT TO BE DISCLOSED TO OTHERS, COPIED, OR USED FOR ANY PURPOSE EXCEPT AS AUTHORIZED IN WRITING. MUST BE RETURNED UPON DEMAND, ON COMPLETION OF ORDER, OR OTHER PURPOSE FOR WHICH IT WAS LENT.

COMPONENTS AND MATERIALS SPECIFIED HEREIN WILL ALSO CONFORM TO THE APPLICABLE SECTION OF GOODMAN MSP 824.01 WORKMANSHIP STANDARD FOR FIT, FEEL AND FINISH.

SPECIAL CHARACTERISTICS
 6SIGMA IS INDICATED BY . CRITICAL CHARACTERISTIC IS INDICATED BY , AND SIGNIFICANT DIMENSION IS INDICATED BY  PLACED NEXT TO THE DIMENSION AND/OR NOTE.

0802971	BM	SHT 8	REMOVED DWGS 10625733, 10625737, 10625738 & 0150M00010	PC	SJK	10-28-08	
0802377	BL	SHT 8	SHT 8 PT 10625733 CONCENTRICITY .062 WAS 1, DIM "A" 21.90 WAS 22.00, SPIDER 088-076 WAS 072, BLADE 043-051 WAS 040 MIN PT 10625737 STATIC 195 WAS 18, T.I.R. 150 WAS 110, DIM "A" 21.88 WAS 21.94, DIM "B" 2.94 WAS 2.93, SPIDER 088-076 WAS 072, BLADE 043-051 5052 H32 WAS 040 MIN MILL, PT 10625738 STATIC 195 WAS 20, T.I.R. 160 WAS 150, DIM "A" 25.86 WAS 25.94, DIM "B" 1.3 WAS 1.2, SPIDER 084-092 WAS 088, BLADE 068-076 WAS 063 MIN, PT 0150M00010 STATIC 195 WAS 20, DIM "A" 25.86 WAS 25.90, SPIDER 084-092 WAS 088, BLADE 068-076 WAS 063 MIN	PC	JEA	7-25-08	
ER	PCN	REV	ZONE	DESCRIPTION	CHK	DR	DATE

THE GOODMAN® FAMILY OF COMPANIES

FAN-COND

DWN BY: D. MASSEY 4-30-04 ENG: DO NOT SCALE DRAWING

CHK BY: DATE: SHT 8 OF 8

106257

REV
BM