

S-SERIES

UP TO 19 SEER2
2 TO 5 TONS

HIGH-EFFICIENCY,
VARIABLE-SPEED, INVERTER DRIVEN
R-32 SPLIT SYSTEM AIR CONDITIONER

Contents

Nomenclature..... 2
 Product Specifications..... 3
 Expanded Cooling Data 4
 Performance Data
 Standard Mode 12
 Sound Power..... 14
 Sound Power Levels..... 14
 Sound Pressure..... 15
 Wiring Diagrams 16
 Dimensions 19
 Accessories 22
 AHRI Ratings (see note)..... 22



Standard Features

- Variable-speed swing compressors
- Quiet digitally commutated fan motor
- High-density compressor sound blanket
- Compatible with Amana Smart Thermostat and other Amana communicating equipment
- Proprietary control algorithmic logic
- In communicating mode, only two low-voltage wires to outdoor unit required
- Diagnostic indicator lights, seven-segment LED display, and fault code storage
- Proprietary Inside intelligence for diagnostics
- Field-selectable boost mode increases compressor speed during unusually high loads
- Field-installed filter drier
- Coil and ambient temperature sensors
- Suction pressure transducer
- Sweat connection service valves with easy access to gauge ports
- AHRI Certified; ETL Listed

Cabinet Features

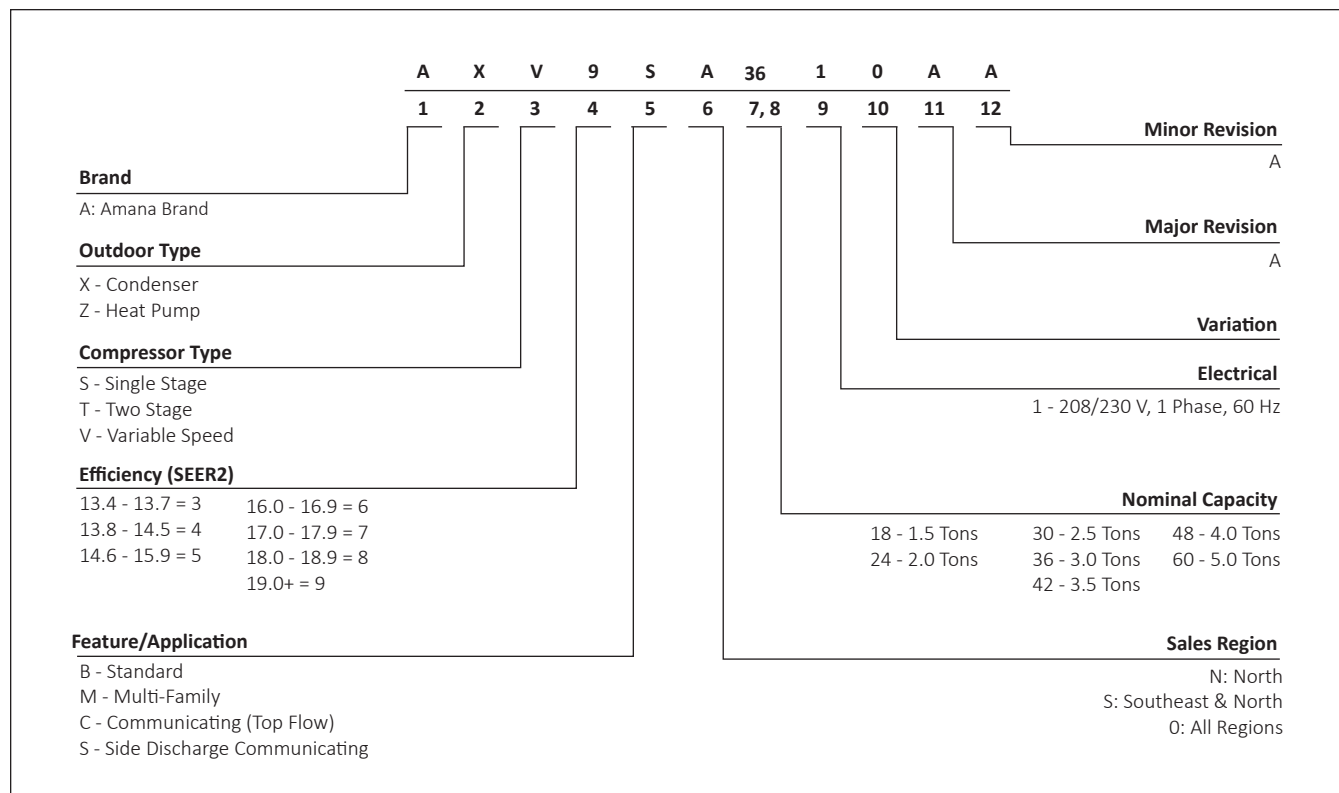
- Heavy-gauge galvanized steel cabinet with grille-style sound control side design
- Custom Ivory white powder-paint finish
- High corrosion-resistant (ZAM[®]), unpainted steel bottom frame and legs
- 500-hour salt-spray tested
- Wire fan discharge grille
- Top and side maintenance access
- When properly anchored, meets the 2023 Florida Building Code unit integrity requirements for hurricane-type winds (Anchor bracket kits available.)



COMPANY WITH ENVIRONMENTAL SYSTEM CERTIFIED BY DNV GL
= ISO 14001 =
COMPANY WITH QUALITY SYSTEM CERTIFIED BY DNV GL
= ISO 9001 =

* Complete warranty available from your local dealer or at www.amana-hac.com. To receive 10-Year Unit Replacement Limited Warranty and 10-Year Parts Limited Warranty, online registration must be completed within 60 days of installation. The duration of warranty coverage may depend on the state in which you reside. Some states and provinces do not allow warranty coverage to be conditioned on registration. For a list of states and provinces that do not allow warranty coverage to be conditioned on registration, please visit www.amana-hac.com/warranty-information or, to request a paper copy of this information, please call us at 1-855-502-3903. Changes in law, regulations, or technology may result in an equivalent unit not being available. Other limitations and exclusions apply, refer to complete warranty details for full list of limitations and exclusions, as well as rights and obligations should an equivalent unit not be available.

+ One-time Unit Replacement coverage and One-time Compressor Replacement coverage is available to the original homeowner for years 11-99 after the installation date through an ASURE Extended Service Plan. Complete details about the Extended Service Plan options available from your ASURE dealer.



	AXV9S A2410A*	AXV9S A3610A*	AXV9S A4810A*	AXV9S A6010B*
CAPACITY AND RATINGS				
Max. Cooling (BTU/h)	23,200	35,000	46,500	53,500
AMBIENT OPERATION RANGE	0 to 115 (-17.8 to 46.1)			
COOLING (°FDB(°CDB))				
COMPRESSOR				
Type	Swing	Swing	Swing	Swing
CONDENSER FAN MOTOR				
Horsepower	0.20	0.36	0.36	2 x 0.32
REFRIGERATION SYSTEM				
Refrigerant Line Size ¹				
Liquid Line Size ("O.D.)	3/8"	3/8"	3/8"	3/8"
Suction Line Size ("O.D.)	7/8"	1 1/8"	1 1/8"	1 1/8"
Refrigerant Connection Size				
Liquid Valve Size ("O.D.)	3/8"	3/8"	3/8"	3/8"
Suction Valve Size ("O.D.)	7/8"	7/8"	7/8"	7/8"
Valve Connection Type	Front Sealing	Front and Back Sealing	Front and Back Sealing	Front and Back Sealing
Refrigerant Charge (oz.)	76	100	118	162
Expansion Device	EEV	EEV	EEV	EEV
Superheat at Service Valve	Auto-control	Auto-control	Auto-control	Auto-control
Subcooling at Service Valve	14±1°F	8±1°F	9±1°F	11±1°F
ELECTRICAL DATA				
Voltage / Phase (60 Hz)	208-230/1	208-230/1	208-230/1	208-230/1
Fan/Compressor Inverter Drive Input	17.6	25.4	30	24.5
Minimum Circuit Ampacity ²	22.4	31.8	37.5	34.4
Max. Overcurrent Protection ³	25	35	40	40
Min / Max Volts	197/253	197/253	197/253	197/253
Electrical Conduit Size	1/2"	1/2" or 3/4"	1/2" or 3/4"	1/2" or 3/4"
EQUIPMENT WEIGHT (LBS)	129	163	174	236
SHIP WEIGHT (LBS)	143	183	196	271

¹ Tested and rated in accordance with AHRI Standard 210/240

² Wire size should be determined in accordance with National Electrical Codes; extensive wire runs will require larger wire sizes.

³ Must use time-delay fuses or HACR-type circuit breakers of the same size as noted.

NOTES

- Always check the S&R plate for electrical data on the unit being installed.
- Installer will need to supply 7/8" to 1 1/8" adapters for suction line connections.
- Unit is charged with refrigerant for 15' of 3/8" liquid line. System charge must be adjusted per Installation Instructions Final Charge Procedure.

See a table below for allowable line set diameter.

UNIT TONS	ALLOWABLE LINE SET DIAMETER						
	LIQUID			SUCTION			
	1/4"	5/16"	3/8"	3/8"	3/4"	7/8"	1 1/8"
2.0		X	X	X	X ¹	X	
3.0			X	X		X	X
4.0			X	X		X	X
5.0			X			X	X

OUTDOOR UNIT	AXV9S*481*A*/ AXV9S*601*A*	TRIM MORE THAN 5% SETTINGS ARE INVALID. TRIMMED UP CFM MAKES MISS MATCHING ERROR.
INDOOR UNIT	A*VT960804C A*VM970804C A*VT800804C	

EXPANDED COOLING DATA — AXV9SA2410A* / AHVE36CP1300A*

IDB	AIRFLOW	OUTDOOR AMBIENT TEMPERATURE																																																																																																									
		65°F				75°F				85°F				95°F				105°F				115°F																																																																																					
		59	63	67	71	59	63	67	71	59	63	67	71	59	63	67	71	59	63	67	71	59	63	67	71																																																																																		
70	680	MBh	25.2	25.6	26.3	24.4	24.7	25.5	23.1	23.5	24.2	21.5	21.8	22.5	19.6	20.0	20.6	18.0	18.3	19.0	0.58	0.50	0.37	0.59	0.51	0.38	0.64	0.56	0.43	0.66	0.59	0.45	1.01	0.64	0.51	21	19	15	20	18	15	19	17	14	18	16	13	2.32	2.32	2.32	2.58	2.58	2.58	8.5	5.5	5.5	6.2	6.2	6.2	7.7	7.7	7.7	8.5	8.5	8.5	9.5	9.5	9.5	9.5	9.4	9.4	302	303	305	302	303	305	345	346	348	391	392	394	441	443	444	495	496	498	120	123	130	126	129	136	131	134	141	135	138	145	138	142	149	143	147	154
		Hi PR	260	262	263	302	303	305	345	346	348	391	392	394	441	443	444	495	496	498	120	123	130	126	129	136	131	134	141	135	138	145	138	142	149	143	147	154																																																																					
		Lo PR	120	123	130	126	129	136	131	134	141	135	138	145	138	142	149	143	147	154	135	138	145	138	142	149	143	147	154	138	142	149	143	147	154	143	147	154																																																																					
		MBh	25.6	26.0	26.7	24.8	25.1	25.8	23.5	23.8	24.6	21.8	22.2	22.9	20.0	20.3	21.0	18.3	18.6	19.3	0.65	0.58	0.45	0.66	0.59	0.45	0.71	0.64	0.50	0.74	0.66	0.53	1.01	0.72	0.58	19	17	14	19	17	13	17	16	12	17	15	12	2.34	2.33	2.33	2.59	2.59	2.59	8.6	8.5	8.5	7.7	7.7	7.7	7.7	7.7	7.7	8.6	8.5	8.5	9.5	9.5	9.5	9.5	9.5	9.5	394	395	397	394	395	397	350	350	350	394	395	397	444	445	447	498	499	501	122	125	132	128	131	138	133	136	143	137	140	147	140	144	151	145	149	156
		Hi PR	263	264	266	304	305	307	348	349	350	394	395	397	444	445	447	498	499	501	122	125	132	128	131	138	133	136	143	137	140	147	140	144	151	145	149	156																																																																					
		Lo PR	122	125	132	128	131	138	133	136	143	137	140	147	140	144	151	145	149	156	137	140	147	140	144	151	145	149	156	140	144	151	145	149	156	145	149	156																																																																					
	MBh	26.1	26.5	27.2	25.2	25.6	26.3	24.0	24.3	25.0	22.3	22.6	23.3	20.4	20.8	21.4	18.8	19.1	19.7	0.69	0.62	0.48	0.69	0.62	0.48	0.75	0.68	0.54	0.78	0.70	0.57	1.01	0.76	0.62	16	16	13	17	15	12	16	15	11	16	14	11	2.34	2.34	2.34	2.60	2.60	2.60	8.6	8.6	8.6	7.8	7.8	7.7	7.7	7.8	7.7	8.6	8.6	8.6	9.5	9.5	9.5	9.5	9.5	9.5	397	398	310	307	308	310	350	351	353	397	398	400	447	448	450	500	501	503	124	127	134	130	134	141	135	139	146	139	142	150	143	146	154	148	151	159	
	Hi PR	266	267	269	307	308	310	350	351	353	397	398	400	447	448	450	500	501	503	124	127	134	130	134	141	135	139	146	139	142	150	143	146	154	148	151	159																																																																						
	Lo PR	124	127	134	130	134	141	135	139	146	139	142	150	143	146	154	148	151	159	139	142	150	143	146	154	148	151	159	143	146	154	148	151	159	148	151	159																																																																						

75	680	MBh	25.2	25.6	26.4	24.4	24.7	25.5	23.1	23.5	24.2	21.5	21.8	22.5	19.7	20.0	20.7	18.0	18.3	19.0	0.71	0.63	0.50	0.72	0.64	0.51	0.82	0.74	0.61	0.82	0.74	0.61	1.00	0.77	0.63	1.01	0.77	0.64	21	19	15	24	22	19	22	21	18	21	20	17	2.32	2.32	2.32	2.58	2.58	2.57	8.5	5.5	5.5	6.2	6.2	6.2	7.7	7.7	7.7	8.5	8.5	8.5	9.4	9.4	9.4	9.5	9.5	9.5	392	393	394	345	346	348	353	392	393	394	399	442	443	445	449	495	496	498	120	123	130	126	129	136	148	131	134	141	153	135	138	145	157	138	142	149	161
		Hi PR	261	262	264	268	302	303	305	309	345	346	348	353	392	393	394	399	442	443	445	120	123	130	126	129	136	148	131	134	141	153	135	138	145	157	138	142	149	161																																																																							
		Lo PR	120	123	130	126	129	136	148	131	134	141	153	135	138	145	157	138	142	149	161	135	138	145	157	138	142	149	161	143	147	154	166	143	147	154	166																																																																										
		MBh	25.6	26.0	26.7	24.8	25.1	25.9	23.5	23.9	24.6	21.8	22.2	22.9	20.0	20.3	21.0	18.3	18.7	19.3	0.78	0.71	0.57	0.79	0.72	0.58	0.82	0.74	0.61	0.82	0.74	0.61	1.00	0.77	0.63	1.01	0.85	0.71	21	19	15	24	22	19	22	21	18	21	20	17	2.32	2.32	2.32	2.58	2.58	2.57	8.5	5.5	5.5	6.2	6.2	6.2	7.7	7.7	7.7	8.5	8.5	8.5	9.4	9.4	9.4	9.5	9.5	9.5	392	393	394	345	346	348	353	392	393	394	399	442	443	445	449	495	496	498	120	123	130	126	129	136	148	131	134	141	153	135	138	145	157	138	142	149	161
		Hi PR	263	265	266	271	305	306	308	312	348	349	351	355	394	395	397	402	444	445	447	120	123	130	126	129	136	148	131	134	141	153	135	138	145	157	138	142	149	161																																																																							
		Lo PR	122	125	132	128	131	138	150	170	23.5	23.9	24.6	25.7	21.8	22.2	22.9	23.9	20.0	20.3	21.0	122	125	132	128	131	138	150	170	23.5	23.9	24.6	25.7	21.8	22.2	22.9	23.9	20.0	20.3	21.0																																																																							
	MBh	26.1	26.5	27.2	25.2	25.6	26.3	24.0	24.3	25.0	22.3	22.6	23.3	20.4	20.8	21.4	18.8	19.1	19.7	0.82	0.74	0.61	0.82	0.74	0.61	0.82	0.74	0.61	0.82	0.74	0.61	1.00	0.77	0.63	1.01	0.85	0.71	21	19	15	24	22	19	22	21	18	21	20	17	2.32	2.32	2.32	2.58	2.58	2.57	8.5	5.5	5.5	6.2	6.2	6.2	7.7	7.7	7.7	8.5	8.5	8.5	9.4	9.4	9.4	9.5	9.5	9.5	392	393	394	345	346	348	353	392	393	394	399	442	443	445	449	495	496	498	120	123	130	126	129	136	148	131	134	141	153	135	138	145	157	138	142	149	161	
	Hi PR	263	265	266	271	305	306	308	312	348	349	351	355	394	395	397	402	444	445	447	120	123	130	126	129	136	148	131	134	141	153	135	138	145	157	138	142	149	161																																																																								
	Lo PR	122	125	132	128	131	138	150	170	23.5	23.9	24.6	25.7	21.8	22.2	22.9	23.9	20.0	20.3	21.0	122	125	132	128	131	138	150	170	23.5	23.9	24.6	25.7	21.8	22.2	22.9	23.9	20.0	20.3	21.0																																																																								
	MBh	26.1	26.5	27.2	25.2	25.6	26.3	24.0	24.3	25.0	22.3	22.6	23.3	20.4	20.8	21.4	18.8	19.1	19.7	0.82	0.74	0.61	0.82	0.74	0.61	0.82	0.74	0.61	0.82	0.74	0.61	1.00	0.77	0.63	1.01	0.85	0.71	21	19	15	24	22	19	22	21	18	21	20	17	2.32	2.32	2.32	2.58	2.58	2.57	8.5	5.5	5.5	6.2	6.2	6.2	7.7	7.7	7.7	8.5	8.5	8.5	9.4	9.4	9.4	9.5	9.5	9.5	392	393	394	345	346	348	353	392	393	394	399	442	443	445	449	495	496	498	120	123	130	126	129	136	148	131	134	141	153	135	138	145	157	138	142	149	161	
	Hi PR	263	265	266	271	305	306	308	312	348	349	351	355	394	395	397	402	444	445	447	120	123	130	126	129	136	148	131	134	141	153	135	138	145	157	138	142	149	161																																																																								
	Lo PR	122	125	132	128	131	138	150	170	23.5	23.9	24.6	25.7	21.8	22.2	22.9	23.9	20.0	20.3	21.0	122	125	132	128	131	138	150	170	23.5	23.9	24.6	25.7	21.8	22.2	22.9	23.9	20.0	20.3	21.0																																																																								

IDB = Entering Indoor Dry Bulb Temperature
 High and low pressures are measured at the liquid and suction service valves.
 Airflow may vary depending on actual ambient conditions and system operation modes.

Shaded area is ACCA (TVA) conditions
 kW = Total system power
 Amps = outdoor unit amps (comp.+fan)

EXPANDED COOLING DATA — AXV9SA2410A* / AHVE36CP1300A*

IDB	AIRFLOW	OUTDOOR AMBIENT TEMPERATURE												115°F																							
		65°F						75°F						85°F						95°F						105°F						115°F					
		59	63	67	71	71	71	59	63	67	71	71	71	59	63	67	71	71	71	59	63	67	71	71	71	59	63	67	71	71	71	59	63	67	71	71	71
80	680	MBh	25.4	25.7	26.5	27.6	27.6	24.5	24.9	25.6	26.7	26.7	23.3	23.6	24.3	25.4	25.4	21.6	21.9	22.6	23.7	23.7	19.8	20.1	20.8	21.8	21.8	18.1	18.4	19.1	20.1						
		S/T	0.83	0.75	0.62	0.48	0.49	0.99	0.76	0.63	0.49	0.49	1.00	0.79	0.66	0.52	0.52	1.00	0.82	0.68	0.54	0.54	1.01	0.84	0.71	0.56	0.56	1.01	1.01	0.76	0.62						
		ΔT	29	27	24	20	20	28	26	23	19	19	1.90	1.90	1.90	1.91	1.91	2.10	2.10	2.10	2.11	2.11	2.32	2.32	2.32	2.33	2.33	2.58	2.58	2.58	2.59						
		kW	1.54	1.54	1.53	1.55	1.55	1.71	1.71	1.71	1.72	1.72	1.90	1.90	1.90	1.91	1.91	2.10	2.10	2.10	2.11	2.11	2.32	2.32	2.32	2.33	2.33	2.58	2.58	2.58	2.59						
		Amps	5.5	5.5	5.5	5.5	5.5	6.2	6.2	6.2	6.2	6.2	6.9	6.9	6.9	7.0	7.0	7.7	7.7	7.7	7.7	7.7	8.5	8.5	8.5	8.5	8.5	9.5	9.4	9.4	9.5						
	Hi PR	261	262	264	269	271	302	304	305	310	310	346	347	348	353	353	392	393	395	400	400	442	442	443	445	450	496	497	499	503							
	Lo PR	120	124	130	142	142	126	130	137	148	148	131	135	142	153	153	135	139	146	158	158	139	142	142	150	162	144	147	155	167							
	MBh	25.8	26.1	26.9	28.0	28.0	24.9	25.2	26.0	27.1	27.1	23.6	24.0	24.7	25.8	25.8	22.0	22.3	23.2	24.1	24.1	20.1	20.4	21.1	22.2	22.2	18.5	18.8	19.4	20.4							
	S/T	0.90	0.83	0.70	0.56	0.56	0.99	0.84	0.71	0.56	0.56	1.00	0.87	0.73	0.59	0.59	1.00	0.89	0.75	0.61	0.61	1.01	0.92	0.78	0.64	0.64	1.01	1.01	0.84	0.69							
	ΔT	28	26	22	19	19	27	25	22	18	18	26	24	21	18	18	25	23	21	17	17	24	22	19	16	16	24	22	19	16							
kW	1.55	1.55	1.55	1.56	1.56	1.72	1.72	1.72	1.73	1.73	1.91	1.91	1.91	1.92	1.92	2.11	2.11	2.11	2.12	2.12	2.34	2.33	2.33	2.34	2.34	2.59	2.59	2.59	2.60								
Amps	5.6	5.5	5.5	5.6	5.6	6.2	6.2	6.2	6.3	6.3	7.0	7.0	6.9	7.0	7.0	7.7	7.7	8.3	7.8	7.8	8.6	8.5	8.5	8.6	8.6	9.5	9.5	9.5	9.5								
Hi PR	264	265	267	271	271	305	306	308	313	313	348	349	351	356	356	395	396	395	402	402	445	446	448	452	452	498	499	501	506								
Lo PR	122	126	133	144	144	128	132	139	150	150	133	137	144	156	156	137	141	150	160	160	141	144	144	152	164	146	149	157	169								
MBh	26.3	26.6	27.4	28.5	28.5	25.4	25.7	26.5	27.6	27.6	24.1	24.4	25.2	26.3	26.3	22.4	22.7	23.4	24.5	24.5	20.6	20.9	21.6	22.6	22.6	18.9	19.2	19.9	20.9								
S/T	0.99	0.87	0.73	0.59	0.59	0.99	0.88	0.74	0.60	0.60	1.00	0.91	0.77	0.63	0.63	1.00	0.93	0.79	0.65	0.65	1.01	1.01	0.82	0.68	0.68	1.01	1.01	0.88	0.73								
ΔT	27	25	21	18	18	26	24	20	17	17	25	23	20	17	17	24	22	19	16	16	23	21	18	15	15	23	21	18	15								
kW	1.56	1.56	1.56	1.57	1.57	1.73	1.73	1.73	1.73	1.73	1.92	1.92	1.92	1.93	1.93	2.12	2.12	2.12	2.13	2.13	2.34	2.34	2.34	2.35	2.35	2.60	2.60	2.60	2.61								
Amps	5.6	5.6	5.6	5.6	5.6	6.3	6.3	6.3	6.3	6.3	7.0	7.0	7.0	7.0	7.0	7.8	7.8	7.7	7.8	7.8	8.6	8.6	8.6	8.6	8.6	9.5	9.5	9.5	9.6								
Hi PR	266	268	269	274	274	308	309	311	315	315	351	352	354	358	358	397	398	400	405	405	447	449	450	455	455	501	502	504	508								
Lo PR	125	128	135	147	147	131	134	141	153	153	136	139	146	158	158	140	143	150	162	162	143	147	147	154	166	148	152	159	171								
85	680	MBh	25.8	26.2	26.9	28.1	28.1	24.9	25.3	26.0	27.1	27.1	23.7	24.0	24.7	25.8	25.8	22.0	22.3	23.0	24.1	24.1	20.2	20.5	21.2	22.2	18.5	18.8	19.5	20.5							
		S/T	0.99	0.85	0.72	0.58	0.58	0.99	0.86	0.73	0.59	0.59	1.00	1.00	0.76	0.62	0.62	1.00	1.00	0.78	0.64	0.64	1.01	1.01	0.81	0.66	1.01	1.01	0.86	0.72							
		ΔT	33	31	27	24	24	32	30	26	23	23	31	29	26	22	22	30	28	25	21	21	28	27	24	20	28	27	24	21							
		kW	1.54	1.54	1.54	1.55	1.55	1.71	1.71	1.71	1.72	1.72	1.90	1.90	1.90	1.91	1.91	2.11	2.10	2.10	2.12	2.12	2.33	2.33	2.33	2.34	2.58	2.58	2.58	2.59							
		Amps	5.5	5.5	5.5	5.6	5.6	6.2	6.2	6.2	6.2	6.2	6.9	6.9	6.9	7.0	7.0	7.7	7.7	7.7	7.7	7.7	8.5	8.5	8.5	8.6	9.5	9.5	9.5	9.5							
	Hi PR	262	264	265	270	270	304	305	307	311	311	347	348	350	354	354	393	394	396	401	401	443	444	446	451	497	498	500	504								
	Lo PR	122	125	132	144	144	128	131	138	150	150	133	136	144	155	155	137	140	148	160	160	141	144	144	151	163	146	149	157	169							
	MBh	26.2	26.5	27.3	28.5	28.5	25.3	25.7	26.4	27.5	27.5	24.0	24.4	25.1	26.2	26.2	22.4	22.7	23.4	24.5	24.5	20.5	20.8	21.5	22.5	22.5	18.8	19.1	19.8	20.8							
	S/T	0.99	0.93	0.80	0.65	0.65	0.99	0.94	0.81	0.66	0.66	1.00	1.00	0.83	0.69	0.69	1.00	1.00	0.86	0.71	0.71	1.01	1.01	0.88	0.74	1.01	1.01	1.01	0.80								
	ΔT	31	30	26	22	22	30	29	25	22	22	30	28	25	21	21	28	27	23	20	20	27	25	22	19	27	25	22	19								
kW	1.55	1.55	1.55	1.56	1.56	1.73	1.73	1.73	1.74	1.74	1.92	1.92	1.92	1.93	1.93	2.12	2.12	2.11	2.13	2.13	2.34	2.34	2.33	2.35	2.59	2.59	2.59	2.60									
Amps	5.6	5.6	5.6	5.6	5.6	6.2	6.2	6.2	6.3	6.3	7.0	7.0	7.0	7.0	7.0	7.7	7.7	7.7	7.8	7.8	8.6	8.6	8.6	8.6	9.5	9.5	9.5	9.5									
Hi PR	265	266	268	273	273	306	307	309	314	314	349	351	352	357	357	396	397	399	403	403	446	447	449	454	500	501	502	507									
Lo PR	124	127	134	146	146	130	134	141	152	152	135	139	146	158	158	139	142	150	162	162	143	146	146	154	166	148	151	159	171								
MBh	26.7	27.0	27.8	28.9	28.9	25.8	26.1	26.9	28.0	28.0	24.5	24.8	25.6	26.7	26.7	22.8	23.1	23.8	24.9	24.9	20.9	21.3	22.0	23.0	23.0	19.3	19.6	20.2	21.2								
S/T	0.99	0.97	0.83	0.69	0.69	0.99	0.99	0.84	0.70	0.70	1.00	1.00	0.87	0.73	0.73	1.00	1.00	0.90	0.75	0.75	1.01	1.01	0.92	0.78	1.01	1.01	1.01	0.83									
ΔT	30	28	25	21	21	29	27	24	20	20	29	27	23	20	20	27	26	22	19	19	26	24	21	18	26	24	21	18									
kW	1.56	1.56	1.56	1.57	1.57	1.74	1.74	1.74	1.75	1.75	1.93	1.93	1.92	1.94	1.94	2.13	2.13	2.12	2.14	2.14	2.35	2.35	2.34	2.36	2.60	2.60	2.60	2.61									
Amps	5.6	5.6	5.6	5.7	5.7	6.3	6.3	6.3	6.3	6.3	7.0	7.0	7.0	7.1	7.1	7.8	7.8	7.8	7.8	7.8	8.6	8.6	8.6	8.6	9.5	9.5	9.5	9.6									
Hi PR	268	269	271	275	275	309	310	312	316	316	352	353	355	360	360	399	400	401	406	406	449	450	452	456	502	503	505	510									
Lo PR	127	130	137	149	149	133	136	143	155	155	137	141	148	160	160	141	145	152	164	164	145	149	149	156	168	150	153	161	173								

IDB = Entering Indoor Dry Bulb Temperature
 High and low pressures are measured at the liquid and suction service valves.
 Airflow may vary depending on actual ambient conditions and system operation modes.
 Shaded area is AHRI conditions
 kW = Total system power
 Amps = outdoor unit amps (comp.+fan)

EXPANDED COOLING DATA — AXV9SA3610A* / AHVE48DP1300A*

IDB	AIRFLOW	OUTDOOR AMBIENT TEMPERATURE																							
		65°F				75°F				85°F				95°F				105°F				115°F			
		59	63	67	71	59	63	67	71	59	63	67	71	59	63	67	71	59	63	67	71	59	63	67	71
70	1070	MBh	40.3	40.8	42.0	38.5	39.0	40.2	36.1	36.6	37.7	33.1	33.6	34.6	29.8	30.3	31.4	26.9	27.4	28.4					
		S/T	0.61	0.53	0.39	0.62	0.54	0.40	0.64	0.56	0.42	0.66	0.59	0.45	0.69	0.61	0.47	0.74	0.66	0.52					
		ΔT	23	21	17	22	20	17	22	20	16	21	19	15	20	18	14	20	18	15					
		kW	2.22	2.22	2.22	2.52	2.52	2.51	2.85	2.85	2.84	3.21	3.21	3.20	3.62	3.61	3.61	4.09	4.09	4.08					
		Amps	6.2	6.2	6.1	7.7	7.7	7.7	9.7	9.6	9.6	12.0	12.0	12.0	15.0	15.0	15.0	18.7	18.7	18.6					
	1260	Hi PR	207	207	209	256	257	259	313	314	316	378	379	380	451	452	454	534	536	538					
		Lo PR	125	131	140	128	135	144	131	137	146	132	138	147	132	139	148	134	140	149					
		MBh	40.9	41.5	42.7	39.1	39.6	40.8	36.7	37.2	38.3	33.6	34.1	35.2	30.4	30.9	31.9	27.4	27.9	28.9					
		S/T	0.69	0.61	0.47	0.70	0.62	0.48	0.72	0.64	0.50	0.74	0.66	0.52	0.77	0.69	0.55	0.82	0.74	0.60					
		ΔT	22	20	16	21	19	15	20	18	15	19	17	14	18	17	13	19	17	14					
1450	kW	2.24	2.24	2.24	2.54	2.54	2.53	2.87	2.87	2.86	3.23	3.23	3.22	3.63	3.63	3.63	4.11	4.11	4.10						
	Amps	6.2	6.2	6.2	7.8	7.8	7.7	9.7	9.7	9.7	12.1	12.1	12.1	15.1	15.1	15.0	18.8	18.7	18.7						
	Hi PR	209	210	211	259	260	261	315	316	318	380	381	383	454	455	457	537	539	541						
	Lo PR	127	133	142	130	137	146	133	139	148	134	140	149	134	141	150	136	142	151						
	MBh	41.7	42.2	43.4	39.8	40.4	41.5	37.4	37.9	39.0	34.3	34.8	35.9	31.0	31.5	32.6	28.1	28.5	29.5						

75	1070	MBh	40.3	40.9	42.1	43.9	38.5	39.0	40.2	42.0	36.1	36.6	37.7	39.4	33.1	33.6	34.7	36.3	36.3	36.3									
		S/T	0.74	0.66	0.52	0.38	0.75	0.67	0.53	0.38	0.78	0.70	0.56	0.41	0.80	0.72	0.58	0.43	0.82	0.74	0.60								
		ΔT	28	26	22	18	27	25	21	17	26	24	21	17	25	23	20	16	24	22	19	15	24	22	19	15			
		kW	2.22	2.22	2.22	2.24	2.52	2.52	2.51	2.53	2.85	2.85	2.84	2.86	3.21	3.21	3.20	3.22	3.61	3.61	3.63	4.09	4.09	4.08	4.11	18.7	18.6	18.7	
		Amps	6.2	6.2	6.1	6.2	7.7	7.7	7.7	7.8	9.6	9.6	9.6	9.7	12.0	12.0	12.0	12.1	15.0	15.0	14.9	15.0	15.0	15.1	18.7	18.6	18.6		
	1260	Hi PR	207	208	209	213	257	258	259	263	313	314	316	320	378	379	381	385	452	453	455	535	536	538	543	540	541	543	
		Lo PR	125	131	140	152	128	135	144	156	131	137	146	158	132	138	147	159	132	139	148	159	134	140	149	160	138	144	153
		MBh	40.9	41.5	42.7	44.5	39.1	39.7	40.8	42.6	36.7	37.2	38.3	40.0	33.6	34.1	35.2	36.9	30.4	30.9	31.9	33.5	27.5	27.9	28.9	28.9	28.4	29.9	
		S/T	0.82	0.74	0.60	0.46	0.83	0.75	0.61	0.46	0.86	0.78	0.64	0.49	1.00	0.80	0.66	0.51	1.00	0.82	0.68	0.53	1.00	0.88	0.73	0.60	0.66	0.51	
		ΔT	26	24	20	16	25	23	20	16	25	23	19	15	24	22	18	14	22	21	17	14	23	21	18	14	14	15	
1450	kW	2.24	2.24	2.23	2.26	2.54	2.53	2.53	2.55	2.87	2.87	2.86	2.88	3.23	3.23	3.22	3.24	3.63	3.63	3.65	4.11	4.11	4.11	4.10	2.76	11.9	11.9		
	Amps	6.2	6.2	6.2	6.2	7.8	7.8	7.7	7.8	9.7	9.7	9.7	9.8	12.1	12.1	12.1	12.2	15.1	15.0	15.1	15.1	18.7	18.7	18.7	11.9	11.9	11.9		
	Hi PR	209	210	211	215	259	260	261	265	316	317	318	322	380	382	383	388	454	455	457	462	538	539	541	539	541	539		
	Lo PR	127	133	142	154	130	137	146	158	133	139	148	160	134	140	149	161	134	141	150	161	136	142	151	165	144	153		
	MBh	41.7	42.3	43.5	45.3	39.9	40.4	41.6	43.3	37.4	37.9	39.0	40.8	34.3	34.8	35.9	37.6	31.1	31.5	32.6	34.2	28.1	28.6	28.1	29.5	28.4	29.5		

IDB = Entering Indoor Dry Bulb Temperature
 High and low pressures are measured at the liquid and suction service valves.
 Airflow may vary depending on actual ambient conditions and system operation modes.
 Shaded area is ACCA (TVA) conditions
 kW = Total system power
 Amps = outdoor unit amps (comp.+fan)

EXPANDED COOLING DATA — AXV9SA3610A* / AHVE48DP1300A*

IDB	AIRFLOW	OUTDOOR AMBIENT TEMPERATURE												105°F												115°F															
		65°F						75°F						85°F						95°F						105°F						115°F									
		59	63	67	71	75	79	59	63	67	71	75	79	59	63	67	71	75	79	59	63	67	71	75	79	59	63	67	71	75	79	59	63	67	71	75	79				
80	MBh	40.5	41.1	42.3	44.1	38.7	39.3	40.4	42.2	36.3	36.8	37.9	39.6	33.3	33.8	34.9	36.5	30.0	30.5	31.6	33.1	27.1	27.6	28.6	30.1	30.0	30.5	31.6	33.1	27.1	27.6	28.6	30.1	30.0	30.5	31.6	33.1	27.1	27.6	28.6	30.1
	S/T	0.99	0.79	0.65	0.51	0.99	0.80	0.66	0.51	1.00	0.83	0.69	0.54	1.00	0.85	0.71	0.56	1.00	0.87	0.73	0.58	1.00	0.93	0.79	0.64	1.00	0.87	0.73	0.58	1.00	0.93	0.79	0.64	1.00	0.87	0.73	0.58	1.00	0.93	0.79	0.64
	ΔT	33	30	27	22	31	29	26	22	31	29	25	21	29	27	24	20	28	26	23	19	28	26	23	19	28	26	23	19	28	26	23	19	28	26	23	19	28	26	23	19
	kW	2.22	2.22	2.22	2.24	2.52	2.52	2.51	2.53	2.85	2.85	2.84	2.87	2.20	2.20	2.20	2.21	3.62	3.61	3.61	3.63	4.09	4.09	4.08	4.11	3.62	3.61	3.61	3.63	4.09	4.09	4.08	4.11	3.62	3.61	3.61	3.63	4.09	4.09	4.08	4.11
	Amps	6.2	6.2	6.1	6.2	7.7	7.7	7.7	7.8	9.7	9.6	9.6	9.7	12.0	12.0	12.0	12.1	15.0	15.0	14.9	15.0	18.7	18.7	18.6	18.7	15.0	15.0	14.9	15.0	18.7	18.7	18.6	18.7	15.0	15.0	14.9	15.0	18.7	18.7	18.6	18.7
	Hi PR	207	208	209	213	257	258	260	263	314	315	316	320	378	379	381	386	452	453	455	460	535	536	538	543	452	453	455	460	535	536	538	543	452	453	455	460	535	536	538	543
	Lo PR	125	132	140	152	129	135	144	156	131	138	147	158	132	139	148	159	133	139	148	160	134	141	150	161	133	139	148	160	134	141	150	161	133	139	148	160	134	141	150	161
	MBh	41.1	41.7	42.9	44.7	39.3	39.9	41.0	42.8	36.9	37.4	38.5	40.2	33.8	34.3	35.0	37.1	30.6	31.1	32.1	33.7	27.6	28.1	29.1	29.0	30.6	31.1	32.1	33.7	27.6	28.1	29.1	29.0	30.6	31.1	32.1	33.7	27.6	28.1	29.1	29.0
	S/T	0.99	0.87	0.73	0.58	0.99	0.88	0.74	0.59	1.00	0.91	0.77	0.62	1.00	0.93	0.79	0.64	1.00	0.95	0.81	0.66	1.00	1.00	0.87	0.74	1.00	0.95	0.81	0.66	1.00	1.00	0.87	0.74	1.00	0.95	0.81	0.66	1.00	1.00	0.87	0.74
	ΔT	31	29	25	21	30	28	24	20	29	27	23	20	28	26	22	19	26	25	21	18	27	25	21	18	26	25	21	18	27	25	21	18	26	25	21	18	27	25	21	18
kW	2.24	2.24	2.23	2.26	2.55	2.54	2.53	2.55	2.87	2.87	2.86	2.88	2.21	2.21	2.21	2.22	3.63	3.63	3.63	3.65	4.11	4.11	4.10	4.10	3.63	3.63	3.63	3.65	4.11	4.11	4.10	4.10	3.63	3.63	3.63	3.65	4.11	4.11	4.10	4.10	
Amps	6.2	6.2	6.2	6.2	7.8	7.8	7.7	7.8	9.7	9.7	9.7	9.8	12.1	12.1	12.1	12.2	15.1	15.1	15.0	15.1	18.8	18.7	18.7	11.9	15.1	15.1	15.0	15.1	18.8	18.7	18.7	11.9	15.1	15.1	15.0	15.1	18.8	18.7	18.7	11.9	
Hi PR	209	210	212	215	259	260	262	266	316	317	319	323	381	382	386	397	455	456	458	462	538	539	541	540	455	456	458	462	538	539	541	540	455	456	458	462	538	539	541	540	
Lo PR	127	134	143	155	131	138	147	159	133	140	149	161	134	141	152	162	135	141	150	162	136	143	152	165	135	141	150	162	136	143	152	165	135	141	150	162	136	143	152	165	

85	MBh	41.2	41.8	43.0	44.8	39.4	39.9	41.1	42.8	36.9	37.4	38.6	40.3	33.9	34.4	35.5	37.1	30.6	31.1	32.1	33.7	27.7	28.1	29.1	29.1	30.6	31.1	32.1	33.7	27.7	28.1	29.1	29.1	30.6	31.1	32.1	33.7	27.7	28.1	29.1	29.1
	S/T	0.99	0.90	0.76	0.61	0.99	0.99	0.77	0.62	1.00	1.00	0.79	0.64	1.00	1.00	0.81	0.67	1.00	1.00	0.84	0.69	1.00	1.00	0.89	0.77	1.00	1.00	0.84	0.69	1.00	1.00	0.89	0.77	1.00	1.00	0.84	0.69	1.00	1.00	0.89	0.77
	ΔT	37	35	31	27	35	33	30	26	34	33	29	25	33	31	27	24	31	30	26	23	31	30	26	22	28	26	23	19	28	26	23	20	28	26	23	19	28	26	23	20
	kW	2.23	2.23	2.22	2.24	2.52	2.52	2.52	2.54	2.86	2.85	2.85	2.87	2.21	2.21	2.21	2.22	3.62	3.62	3.61	3.64	4.10	4.10	4.09	2.75	3.62	3.62	3.61	3.64	4.10	4.10	4.09	2.75	3.62	3.62	3.61	3.64	4.10	4.10	4.09	2.75
	Amps	6.2	6.2	6.2	6.2	7.7	7.7	7.7	7.8	9.7	9.7	9.6	9.7	12.1	12.0	12.0	12.1	15.0	15.0	15.0	15.1	18.7	18.7	18.7	11.8	15.0	15.0	15.0	15.1	18.7	18.7	18.7	11.8	15.0	15.0	15.0	15.1	18.7	18.7	18.7	11.8
	Hi PR	208	209	210	214	258	259	261	265	315	316	317	322	380	381	382	387	453	454	456	461	537	538	540	538	453	454	456	461	537	538	540	538	453	454	456	461	537	538	540	538
	Lo PR	127	134	142	154	131	137	146	158	133	140	149	160	134	141	149	161	134	141	150	162	136	143	151	165	134	141	150	162	136	143	151	165	134	141	150	162	136	143	151	165
	MBh	41.8	42.4	43.6	45.4	40.0	40.5	41.7	43.4	37.5	38.0	39.1	40.9	34.4	34.9	36.0	37.7	31.2	31.6	32.7	34.3	28.2	28.7	29.6	29.6	31.2	31.6	32.7	34.3	28.2	28.7	29.6	29.6	31.2	31.6	32.7	34.3	28.2	28.7	29.6	29.6
	S/T	0.99	0.99	0.84	0.69	0.99	0.99	0.84	0.70	1.00	1.00	0.87	0.72	1.00	1.00	0.89	0.74	1.00	1.00	0.92	0.77	1.00	1.00	0.97	0.85	1.00	1.00	0.92	0.77	1.00	1.00	0.97	0.85	1.00	1.00	0.92	0.77	1.00	1.00	0.97	0.85
	ΔT	30	29	25	22	30	28	25	21	29	28	24	21	28	27	23	20	28	26	23	19	28	26	23	20	28	26	23	19	28	26	23	20	28	26	23	19	28	26	23	20
kW	2.25	2.25	2.24	2.26	2.54	2.54	2.54	2.56	2.87	2.87	2.87	2.89	2.21	2.21	2.21	2.22	3.64	3.64	3.63	3.66	4.12	4.11	4.11	2.76	3.64	3.64	3.63	3.66	4.12	4.11	4.11	2.76	3.64	3.64	3.63	3.66	4.12	4.11	4.11	2.76	
Amps	6.2	6.2	6.2	6.2	7.8	7.8	7.8	7.8	9.7	9.7	9.7	9.8	12.1	12.1	12.1	12.2	15.1	15.1	15.1	15.2	18.8	18.8	18.7	11.9	15.1	15.1	15.1	15.2	18.8	18.8	18.7	11.9	15.1	15.1	15.1	15.2	18.8	18.8	18.7	11.9	
Hi PR	210	211	213	216	260	261	263	267	317	318	320	324	382	383	385	389	456	457	459	464	539	541	543	541	456	457	459	464	539	541	543	541	456	457	459	464	539	541	543	541	
Lo PR	133	140	149	162	135	142	151	163	135	142	151	163	134	141	149	161	132	139	147	159	131	137	146	157	132	139	147	159	131	137	146	157	132	139	147	159	131	137	146	157	

IDB = Entering Indoor Dry Bulb Temperature
 High and low pressures are measured at the liquid and suction service valves.
 Airflow may vary depending on actual ambient conditions and system operation modes.
 Shaded area is AHRI conditions
 kW = Total system power
 Amps = outdoor unit amps (comp.+fan)

EXPANDED COOLING DATA — AXV9SA4810A* / AHVE60DP1300A*

IDB	AIRFLOW	OUTDOOR AMBIENT TEMPERATURE												105°F												115°F											
		65°F						75°F						85°F						95°F						105°F						115°F					
		59	63	67	71	59	63	67	71	59	63	67	71	59	63	67	71	59	63	67	71	59	63	67	71	59	63	67	71								
70	1170	MBh	26.7	40.2	51.5	35.1	48.8	50.2	46.0	46.7	48.1	43.1	43.8	45.2	39.8	40.5	41.9	32.5	33.1	34.3	39.8	40.5	41.9	32.5	33.1	34.3	39.8	40.5	41.9	32.5	33.1	34.3					
		S/T	0.65	0.51	0.36	0.60	0.49	0.36	0.59	0.51	0.39	0.60	0.53	0.40	0.63	0.55	0.43	0.69	0.61	0.48	0.63	0.55	0.43	0.69	0.61	0.48	0.63	0.55	0.43	0.69	0.61	0.48					
		ΔT	21	21	16	22	19	15	21	19	15	20	18	15	20	18	14	22	20	16	20	18	14	22	20	16	20	18	14	22	20	16					
		kW	1.48	2.28	3.26	2.27	3.69	3.69	4.17	4.16	4.15	4.67	4.67	4.66	5.23	5.22	5.22	4.98	4.98	4.97	5.23	5.22	5.22	4.98	4.98	4.97	5.23	5.22	5.22	4.98	4.98	4.97					
		Amps	6.0	9.1	12.8	9.1	14.4	14.4	16.2	16.2	16.2	18.2	18.1	18.1	20.3	20.3	20.3	19.3	19.3	19.3	20.3	20.3	20.3	19.3	19.3	19.3	20.3	20.3	20.3	19.3	19.3	19.3					
		Hi PR	257	270	285	307	328	330	374	375	377	424	425	427	478	480	481	522	524	526	478	480	481	522	524	526	478	480	481	522	524	526					
	Lo PR	119	119	124	120	122	130	119	127	135	123	130	139	126	134	143	132	139	149	126	134	143	132	139	149	126	134	143	132	139	149						
	1380	MBh	28.9	44.3	52.3	39.2	49.5	51.0	46.8	47.4	48.9	43.8	44.5	45.9	40.6	41.2	42.6	33.1	33.7	34.9	40.6	41.2	42.6	33.1	33.7	34.9	40.6	41.2	42.6	33.1	33.7	34.9					
		S/T	0.70	0.57	0.43	0.66	0.56	0.43	0.66	0.59	0.46	0.68	0.60	0.48	0.70	0.62	0.50	0.76	0.69	0.56	0.70	0.62	0.50	0.76	0.69	0.56	0.70	0.62	0.50	0.76	0.69	0.56					
		ΔT	20	19	14	21	18	14	19	18	14	19	17	14	18	16	13	21	19	15	18	16	13	21	19	15	18	16	13	21	19	15					
		kW	1.59	2.56	3.29	2.57	3.72	3.71	4.19	4.19	4.18	4.70	4.69	4.69	5.25	5.25	5.24	5.01	5.00	5.00	5.25	5.25	5.24	5.01	5.00	5.00	5.25	5.25	5.24	5.01	5.00	5.00					
		Amps	6.5	10.2	12.9	10.2	14.5	14.5	16.3	16.3	16.3	18.3	18.3	18.2	20.4	20.4	20.4	19.4	19.4	19.4	20.4	20.4	20.4	19.4	19.4	19.4	20.4	20.4	20.4	19.4	19.4	19.4					
Hi PR		261	277	288	314	331	333	377	378	380	427	428	430	481	482	484	525	526	528	481	482	484	525	526	528	481	482	484	525	526	528						
Lo PR	120	120	127	120	124	133	121	129	137	123	131	140	127	136	145	133	141	151	128	136	145	133	141	151	128	136	145	133	141	151							
1590	MBh	33.3	51.7	53.2	45.5	50.4	51.9	47.7	48.4	49.8	44.8	45.4	46.8	41.4	42.1	43.5	33.9	34.5	35.7	41.4	42.1	43.5	33.9	34.5	35.7	41.4	42.1	43.5	33.9	34.5	35.7						
	S/T	0.71	0.59	0.46	0.68	0.60	0.47	0.69	0.62	0.49	0.71	0.64	0.51	0.73	0.66	0.53	0.80	0.72	0.59	0.73	0.66	0.53	0.80	0.72	0.59	0.73	0.66	0.53	0.80	0.72	0.59						
	ΔT	19	17	13	20	16	13	18	16	13	18	16	12	17	15	12	19	17	14	17	15	12	19	17	14	17	15	12	19	17	14						
	kW	1.81	3.32	3.31	3.09	3.74	3.74	4.22	4.21	4.21	4.72	4.72	4.71	5.28	5.27	5.27	5.03	5.02	5.02	5.28	5.27	5.27	5.03	5.02	5.02	5.28	5.27	5.27	5.03	5.02	5.02						
	Amps	7.4	13.0	13.0	12.1	14.6	14.6	16.4	16.4	16.4	18.4	18.3	18.3	20.5	20.5	20.5	19.5	19.5	19.4	20.5	20.5	20.5	19.5	19.5	19.4	20.5	20.5	20.5	19.5	19.5	19.4						
	Hi PR	267	289	291	324	334	336	379	381	383	430	431	433	484	485	487	528	529	531	484	485	487	528	529	531	484	485	487	528	529	531						
Lo PR	120	120	129	119	126	135	123	131	140	123	131	140	127	135	147	135	144	153	130	138	147	135	144	153	130	138	147	135	144	153							

75	1170	MBh	26.7	40.2	51.5	35.1	48.8	50.2	46.0	46.7	48.1	43.1	43.8	45.2	39.9	40.5	41.9	32.5	33.1	34.3	39.9	40.5	41.9	32.5	33.1	34.3	39.9	40.5	41.9	32.5	33.1	34.3			
		S/T	0.79	0.64	0.48	0.73	0.61	0.48	0.71	0.64	0.51	0.80	0.73	0.65	0.82	0.75	0.62	1.00	0.81	0.68	0.54	0.82	0.75	0.62	1.00	0.81	0.68	0.54	0.82	0.75	0.62	1.00	0.81	0.68	0.54
		ΔT	25	25	20	26	23	20	25	23	20	24	22	19	24	22	18	25	23	19	16	24	22	18	25	23	19	16	24	22	18	25	23	19	16
		kW	1.48	2.27	3.26	2.27	3.69	3.68	4.16	4.16	4.15	4.67	4.66	4.65	5.22	5.22	5.21	5.00	4.98	4.98	4.97	5.22	5.22	5.21	5.00	4.98	4.97	5.22	5.22	5.21	5.00	4.98	4.97	5.00	
		Amps	6.0	9.1	12.8	9.1	14.4	14.4	16.2	16.2	16.2	18.1	18.1	18.1	20.3	20.3	20.3	19.3	19.3	19.3	20.3	20.3	20.3	19.3	19.3	19.3	20.3	20.3	20.3	19.3	19.3	19.3	19.4		
		Hi PR	257	270	286	308	328	330	374	375	377	424	425	427	479	480	482	523	524	526	531	479	480	482	523	524	526	531	479	480	482	523	524	526	531
	Lo PR	119	119	124	120	122	130	119	127	135	123	130	139	126	134	143	132	139	149	160	126	134	143	132	139	149	160	126	134	143	132	139	149	160	
	1380	MBh	28.9	44.3	52.3	39.2	49.5	51.0	46.8	47.5	48.9	43.9	44.5	45.9	40.6	41.2	42.6	33.1	33.7	34.9	40.6	41.2	42.6	33.1	33.7	34.9	40.6	41.2	42.6	33.1	33.7	34.9			
		S/T	0.84	0.70	0.55	0.79	0.68	0.56	0.78	0.71	0.58	0.80	0.73	0.60	0.82	0.75	0.62	1.00	0.81	0.68	0.54	0.82	0.75	0.62	1.00	0.81	0.68	0.54	0.82	0.75	0.62	1.00	0.81	0.68	0.54
		ΔT	24	24	19	25	22	18	24	22	18	23	21	18	24	22	17	25	23	19	16	24	22	17	25	23	19	16	24	22	17	25	23	19	16
		kW	1.58	2.56	3.29	2.57	3.72	3.71	4.19	4.19	4.18	4.69	4.68	4.68	5.25	5.25	5.24	5.00	5.00	5.00	5.02	5.25	5.25	5.24	5.00	5.00	5.02	5.25	5.25	5.24	5.00	5.00	5.02	5.00	
		Amps	6.5	10.2	12.9	10.2	14.5	14.5	16.3	16.3	16.3	18.3	18.2	18.3	20.4	20.4	20.4	19.4	19.4	19.4	20.4	20.4	20.4	19.4	19.4	19.4	20.4	20.4	20.4	19.4	19.4	19.4	19.5		
Hi PR		261	278	289	314	331	333	377	378	380	427	428	430	481	483	485	526	527	529	533	481	483	485	526	527	529	533	481	483	485	526	527	529	533	
Lo PR	120	120	127	120	124	133	121	129	137	125	132	141	128	136	145	133	141	151	162	128	136	145	133	141	151	162	128	136	145	133	141	151	162		
1590	MBh	33.3	51.8	53.2	45.6	50.5	51.9	47.7	48.4	49.8	44.8	45.4	46.8	41.5	42.1	43.5	33.9	34.5	35.7	41.5	42.1	43.5	33.9	34.5	35.7	41.5	42.1	43.5	33.9	34.5	35.7				
	S/T	0.84	0.71	0.59	0.81	0.72	0.59	0.81	0.74	0.61	0.83	0.76	0.63	0.85	0.78	0.65	1.00	0.85	0.72	0.58	0.85	0.78	0.65	1.00	0.85	0.72	0.58	0.85	0.78	0.65	1.00	0.85	0.72	0.58	
	ΔT	24	21	17	24	21	17	22	21	17	22	20	16	22	20	16	24	22	18	14	22	20	16	24	22	18	14	22	20	16	24	22	18	14	
	kW	1.81	3.32	3.31	3.09	3.74	3.73	4.21	4.21	4.20	4.72	4.71	4.71	5.27	5.27	5.26	5.00	5.02	5.01	5.04	5.27	5.27	5.26	5.00	5.02	5.04	5.27	5.27	5.26	5.00	5.02	5.04	5.04		
	Amps	7.4	13.0	13.0	12.1	14.6	14.6	16.4	16.4	16.4	18.3	18.3	18.3	20.5	20.5	20.5	19.5	19.5	19.5	19.5	20.5	20.5	20.5	19.5	19.5	19.5	20.5	20.5	20.5	19.5	19.5	19.5	19.5		
	Hi PR	267	289	291	324	334	336	380	381	383	430	431	433	484	485	487	528	529	531	536	484	485	487	528	529	531	536	484	485	487	528	529	531	536	
Lo PR	120	120	129	120	126	135	123	131	140	123	131	140	127	135	147	135	144	153	165	130	138	147	135	144	153	165	130	138	147	135	144	153	165		

Shaded area is ACCA (TVA) conditions

EXPANDED COOLING DATA — AXV9SA4810A* / AHVE60DP1300A*

IDB	AIRFLOW	OUTDOOR AMBIENT TEMPERATURE												ENTERING INDOOR WET BULB TEMPERATURE													
		65°F				75°F				85°F				95°F				105°F				115°F					
		59	63	67	71	59	63	67	71	59	63	67	71	59	63	67	71	59	63	67	71	59	63	67	71		
80	1170	MBh	26.9	40.4	51.8	54.0	36.6	49.0	50.5	52.7	46.3	47.0	48.4	50.6	43.4	44.1	45.5	47.6	40.1	40.8	42.1	44.2	32.7	33.3	34.5	36.3	
		S/T	0.92	0.76	0.60	0.46	0.84	0.73	0.60	0.47	0.83	0.75	0.63	0.49	1.00	0.77	0.64	0.51	1.00	0.79	0.67	0.53	1.00	0.86	0.73	0.59	
		ΔT	29	30	24	21	31	28	24	20	27	29	27	24	20	28	27	23	20	28	26	22	19	31	29	25	21
		kW	1.48	2.28	3.26	3.30	2.37	3.69	3.69	3.72	4.17	4.16	4.15	4.19	4.67	4.66	4.66	4.69	5.23	5.23	5.22	5.22	5.25	4.98	4.98	4.97	5.00
	1380	Amps	6.0	9.1	12.8	12.9	9.5	14.4	14.4	14.5	16.2	16.2	16.2	16.3	18.2	18.1	18.1	18.2	20.3	20.3	20.3	20.4	19.3	19.3	19.3	19.4	
		Hi PR	258	271	286	291	310	329	331	336	374	376	378	383	425	426	428	433	479	480	482	487	523	524	526	531	
		Lo PR	120	120	125	136	119	122	131	142	120	127	136	147	123	131	140	151	127	134	143	155	132	140	149	161	
		MBh	29.1	46.7	52.5	54.8	41.0	49.8	51.2	53.5	47.0	47.7	49.1	51.3	44.1	44.8	46.5	48.3	40.8	41.5	42.9	45.0	33.4	33.9	35.1	36.9	
	1590	S/T	0.97	0.81	0.67	0.53	0.90	0.80	0.67	0.54	0.90	0.83	0.70	0.56	1.00	0.84	0.72	0.58	1.00	0.86	0.74	0.60	1.00	0.93	0.80	0.66	
		ΔT	29	29	23	19	30	26	22	19	28	26	22	19	27	25	22	18	26	24	21	18	29	27	24	20	
		kW	1.59	2.73	3.29	3.32	2.71	3.72	3.71	3.75	4.19	4.19	4.18	4.22	4.70	4.69	4.65	4.72	5.25	5.25	5.24	5.28	5.01	5.00	5.00	5.02	
		Hi PR	262	280	289	294	317	332	334	339	377	379	381	385	428	429	428	436	482	483	485	490	526	527	529	534	
85	1170	Lo PR	120	119	127	138	120	124	133	144	122	129	138	149	125	133	143	153	129	136	146	157	134	142	151	163	
		MBh	35.7	52.0	53.5	55.7	50.0	50.7	52.2	54.4	48.0	48.6	50.1	52.2	45.0	45.7	47.1	49.2	41.7	42.4	43.7	45.8	34.1	34.7	35.9	37.7	
		S/T	0.96	0.83	0.70	0.57	0.91	0.84	0.71	0.57	1.00	0.86	0.73	0.60	1.00	0.88	0.75	0.62	1.00	0.90	0.77	0.64	1.00	0.97	0.84	0.70	
		ΔT	28	25	22	18	27	25	21	18	27	25	21	18	26	24	21	17	25	23	20	16	28	26	22	19	
1380	kW	1.94	3.32	3.31	3.35	3.75	3.74	3.74	3.77	4.22	4.21	4.20	4.24	4.72	4.71	4.71	4.74	5.28	5.27	5.27	5.30	5.02	5.02	5.02	5.04		
	Amps	7.9	13.0	13.0	13.1	14.6	14.6	14.6	14.7	16.4	16.4	16.4	16.5	18.4	18.3	18.3	18.4	20.5	20.5	20.5	20.6	19.5	19.5	19.4	19.5		
	Hi PR	270	290	292	297	333	335	337	341	380	381	383	388	430	432	434	439	485	486	488	493	529	530	532	537		
	Lo PR	119	121	129	140	119	127	135	146	124	131	140	151	127	135	144	155	131	139	148	159	136	144	154	165		
85	1170	MBh	29.1	44.6	52.6	54.9	41.0	49.9	51.3	53.5	47.1	47.8	49.2	51.4	44.2	44.8	46.2	48.4	40.9	41.5	42.9	45.0	33.4	34.0	35.2	37.0	
		S/T	1.00	0.85	0.69	0.56	1.00	0.83	0.70	0.56	1.00	0.85	0.72	0.59	1.00	0.87	0.74	0.61	1.00	1.00	0.76	0.63	1.00	1.00	0.83	0.69	
		ΔT	34	34	28	24	35	31	28	24	33	31	27	24	32	30	27	23	31	29	26	22	34	32	29	25	
		kW	1.58	2.55	3.27	3.31	2.69	3.70	3.69	3.73	4.17	4.17	4.16	4.20	4.68	4.67	4.67	4.70	5.23	5.23	5.22	5.26	4.99	4.99	4.98	5.01	
1380	Amps	6.4	10.1	12.8	12.9	10.7	14.4	14.4	14.6	16.3	16.2	16.2	16.3	18.2	18.2	18.1	18.3	20.3	20.3	20.3	20.4	19.3	19.3	19.3	19.4		
	Hi PR	260	277	288	292	315	330	332	337	376	377	379	384	426	427	429	434	480	482	484	489	525	526	528	532		
	Lo PR	120	120	127	137	119	124	133	144	121	129	138	149	125	133	142	153	128	136	145	156	134	142	151	162		
	MBh	33.4	51.9	53.4	55.6	45.7	50.6	52.1	54.3	47.8	48.5	49.9	52.1	44.9	45.6	47.0	49.1	41.6	42.2	43.6	45.7	34.0	34.6	35.8	37.6		
1590	S/T	1.00	0.89	0.76	0.63	1.00	0.90	0.77	0.63	1.00	0.92	0.79	0.66	1.00	0.94	0.81	0.68	1.00	1.00	0.83	0.70	1.00	1.00	0.90	0.76		
	ΔT	33	30	27	23	34	30	26	23	31	30	26	22	31	29	25	22	30	28	25	21	33	31	27	24		
	kW	1.80	3.31	3.30	3.33	3.08	3.73	3.72	3.76	4.20	4.20	4.19	4.22	4.70	4.70	4.69	4.73	5.26	5.26	5.25	5.28	5.01	5.01	5.00	5.03		
	Amps	7.3	13.0	12.9	13.1	12.1	14.6	14.5	14.7	16.4	16.4	16.3	16.5	18.3	18.3	18.3	18.4	20.5	20.4	20.4	20.5	19.4	19.4	19.4	19.5		
85	1380	Hi PR	267	288	290	295	323	333	335	340	379	380	382	387	429	430	432	437	483	485	486	491	527	529	530	535	
		Lo PR	120	123	131	142	121	128	137	148	125	133	142	153	129	137	146	157	132	140	150	161	137	146	155	167	
		MBh	39.5	52.8	54.3	56.6	50.9	51.5	53.0	55.2	48.8	49.4	50.9	53.0	45.8	46.5	47.9	50.0	42.5	43.1	44.5	46.6	34.8	35.4	36.6	38.4	
		S/T	1.00	0.93	0.80	0.66	1.00	0.93	0.80	0.67	1.00	0.96	0.83	0.69	1.00	1.00	0.85	0.71	1.00	1.00	0.87	0.73	1.00	1.00	0.94	0.80	
1590	ΔT	33	29	26	22	31	29	25	21	30	28	25	21	30	28	24	21	29	27	24	20	32	30	26	22		
	kW	2.15	3.33	3.32	3.36	3.76	3.75	3.74	3.78	4.22	4.22	4.21	4.25	4.73	4.72	4.72	4.75	5.28	5.28	5.27	5.31	5.03	5.03	5.02	5.05		
	Amps	8.7	13.0	13.0	13.2	14.7	14.7	14.6	14.8	16.5	16.4	16.4	16.6	18.4	18.4	18.3	18.5	20.5	20.5	20.5	20.6	19.5	19.5	19.5	19.6		
	Hi PR	274	291	293	298	335	336	338	343	381	383	385	390	432	433	435	440	486	487	489	494	530	531	533	538		
85	1590	Lo PR	120	123	131	142	121	128	137	148	125	133	142	153	129	137	146	157	132	140	150	161	137	146	155	167	

IDB = Entering Indoor Dry Bulb Temperature
 High and low pressures are measured at the liquid and suction service valves.
 Airflow may vary depending on actual ambient conditions and system operation modes.
 Shaded area is AHRF conditions
 kW = Total system power
 Amps = outdoor unit amps (comp.+fan)

EXPANDED COOLING DATA — AXV9SA6010B* / AHVE60DP1300A*

IDB	AIRFLOW	OUTDOOR AMBIENT TEMPERATURE																							
		65°F				75°F				85°F				95°F				105°F				115°F			
		59	63	67	71	59	63	67	71	59	63	67	71	59	63	67	71	59	63	67	71	59	63	67	71
70	MBh	39.1	44.1	53.2	49.3	51.8	53.4	50.3	51.0	52.6	48.5	49.2	52.8	45.8	46.6	48.3	38.8	39.4	39.0	45.8	46.6	48.3	38.8	39.4	39.0
	S/T	0.64	0.54	0.37	0.60	0.50	0.37	0.60	0.52	0.39	0.61	0.54	0.41	0.63	0.56	0.43	0.70	0.62	0.50	0.63	0.56	0.43	0.70	0.62	0.50
	ΔT	20	19	16	21	19	16	21	19	16	20	19	15	20	18	15	21	19	15	20	18	15	21	19	15
	kW	2.15	2.49	3.70	3.36	4.16	4.15	4.66	4.65	4.64	5.18	5.18	5.21	5.73	5.72	5.73	5.58	5.57	5.16	5.73	5.72	5.73	5.58	5.57	5.16
	Amps	8.3	9.5	13.6	12.7	15.5	15.4	17.6	17.6	17.6	19.9	19.9	19.9	22.6	22.6	22.5	22.1	22.1	20.5	22.6	22.6	22.5	22.1	22.1	20.5
	Hi PR	254	261	276	310	319	321	365	366	368	417	418	420	473	474	476	527	529	525	473	474	476	527	529	525
Lo PR	119	120	120	119	119	126	121	124	130	124	128	134	128	131	138	134	138	146	128	131	138	134	138	146	
70	MBh	42.9	47.2	54.0	52.3	52.6	54.2	51.1	51.9	53.4	49.3	50.1	53.6	46.2	47.6	49.1	37.7	38.4	39.7	46.2	47.6	49.1	37.7	38.4	39.7
	S/T	0.71	0.88	0.44	0.67	0.58	0.44	0.67	0.60	0.47	0.68	0.61	0.48	0.70	0.63	0.50	0.78	0.71	0.57	0.70	0.63	0.50	0.78	0.71	0.57
	ΔT	19	26	14	20	18	14	20	18	14	19	17	14	19	17	13	19	17	14	19	17	13	19	17	14
	kW	2.42	2.69	3.73	3.65	4.19	4.18	4.69	4.68	4.67	5.21	5.21	5.24	5.70	5.77	5.76	4.54	4.54	4.53	5.70	5.77	5.76	4.54	4.54	4.53
	Amps	9.2	10.2	13.7	13.6	15.6	15.6	17.7	17.7	17.7	20.1	20.1	20.0	22.7	22.7	22.6	20.7	20.6	20.6	22.7	22.7	22.6	20.7	20.6	20.6
	Hi PR	261	267	278	317	322	324	368	369	371	420	421	423	476	477	479	525	526	528	476	477	479	525	526	528
Lo PR	119	122	122	120	121	128	122	126	132	126	130	136	129	133	140	137	141	148	129	133	140	137	141	148	
70	MBh	47.4	53.9	55.0	52.9	53.6	55.2	52.1	52.9	54.4	50.3	51.1	54.7	46.3	47.2	48.7	38.6	39.3	37.9	46.3	47.2	48.7	38.6	39.3	37.9
	S/T	1.00	0.63	0.48	0.68	0.61	0.48	0.70	0.63	0.50	0.72	0.65	0.52	0.74	0.66	0.54	0.82	0.74	0.88	0.74	0.66	0.54	0.82	0.74	0.88
	ΔT	27	17	13	19	17	13	18	17	13	18	16	13	17	16	12	18	16	20	17	16	12	18	16	20
	kW	2.71	3.28	3.76	4.22	4.21	4.20	4.71	4.71	4.70	5.24	5.23	5.27	5.61	5.63	5.63	4.56	4.56	4.02	5.61	5.63	5.63	4.56	4.56	4.02
	Amps	10.2	12.1	13.8	15.7	15.7	15.7	17.8	17.8	17.8	20.2	20.2	20.1	22.8	22.8	22.8	20.7	20.7	18.3	22.8	22.8	22.8	20.7	20.7	18.3
	Hi PR	268	276	281	323	324	326	371	372	374	423	424	426	479	480	482	527	528	522	479	480	482	527	528	522
Lo PR	120	120	124	120	124	130	125	128	135	128	132	138	131	135	142	140	143	154	131	135	142	140	143	154	

75	MBh	39.1	44.1	53.2	49.3	51.9	53.4	50.3	51.1	52.6	48.5	49.3	52.9	45.8	46.4	48.0	38.8	39.5	39.0	45.8	46.4	48.0	38.8	39.5	39.0
	S/T	0.78	0.68	0.49	0.73	0.63	0.50	0.72	0.65	0.52	0.73	0.66	0.53	0.75	0.68	0.55	0.99	0.75	0.62	0.75	0.68	0.55	0.99	0.75	0.62
	ΔT	24	23	20	25	23	20	25	23	20	25	23	20	25	23	21	24	23	19	24	23	21	24	23	19
	kW	2.15	2.49	3.70	3.36	4.15	4.14	4.68	4.65	4.64	5.18	5.18	5.21	5.73	5.70	5.69	4.88	4.88	4.51	5.73	5.70	5.69	4.88	4.88	4.51
	Amps	8.3	9.5	13.5	12.6	15.5	15.4	17.6	17.6	17.6	19.9	19.9	19.9	22.6	22.5	22.5	22.1	22.1	20.5	22.6	22.5	22.5	22.1	22.1	20.5
	Hi PR	254	261	276	311	319	321	365	367	369	417	418	420	473	475	477	528	529	525	473	475	477	528	529	525
Lo PR	119	120	120	119	119	126	121	124	131	124	128	134	128	131	138	134	138	146	128	131	138	134	138	146	
75	MBh	42.9	48.0	54.0	52.4	52.7	54.2	51.1	51.9	53.5	49.3	50.1	53.7	46.5	47.2	48.8	37.8	38.4	39.7	46.5	47.2	48.8	37.8	38.4	39.7
	S/T	0.84	0.98	0.57	0.80	0.70	0.57	0.79	0.72	0.59	0.81	0.73	0.60	0.82	0.75	0.62	0.99	0.83	0.70	0.82	0.75	0.62	0.99	0.83	0.70
	ΔT	23	30	19	24	22	18	24	22	18	24	22	18	23	21	17	23	21	18	23	21	17	23	21	18
	kW	2.41	2.70	3.73	3.65	4.18	4.18	4.68	4.68	4.67	5.21	5.21	5.24	5.73	5.73	5.72	4.54	4.54	4.04	5.73	5.72	5.72	4.54	4.54	4.04
	Amps	9.2	10.2	13.7	13.6	15.6	15.5	17.7	17.7	17.7	20.1	20.1	20.0	22.7	22.7	22.6	20.6	20.6	18.4	22.7	22.7	22.6	20.6	20.6	18.4
	Hi PR	261	268	279	317	322	324	368	369	371	420	421	423	476	477	479	525	526	528	476	477	479	525	526	528
Lo PR	120	123	122	120	121	128	123	126	132	126	130	136	129	133	140	137	141	148	129	133	140	137	141	148	
75	MBh	48.2	53.9	55.0	52.9	53.7	55.2	52.2	52.9	54.5	50.4	51.1	54.7	47.8	48.5	50.1	38.7	39.3	38.7	47.8	48.5	50.1	38.7	39.3	38.7
	S/T	1.00	0.76	0.60	0.81	0.74	0.61	0.83	0.76	0.63	0.84	0.77	0.64	0.86	0.79	0.66	0.99	0.87	0.98	0.86	0.79	0.66	0.99	0.87	0.98
	ΔT	30	21	18	22	21	17	23	21	17	23	21	17	21	20	16	22	20	24	21	20	16	22	20	24
	kW	2.72	3.28	3.75	4.21	4.21	4.20	4.71	4.70	4.70	5.23	5.23	5.26	5.79	5.78	5.78	4.56	4.55	4.03	5.79	5.78	5.78	4.56	4.55	4.03
	Amps	10.3	12.1	13.8	15.7	15.7	15.6	17.8	17.8	17.8	20.2	20.1	20.1	22.8	22.8	22.7	20.7	20.7	18.4	22.8	22.8	22.7	20.7	20.7	18.4
	Hi PR	269	276	281	323	325	326	371	372	374	423	424	426	479	480	482	528	529	524	479	480	482	528	529	524
Lo PR	122	120	124	120	124	130	125	128	135	128	132	138	132	135	142	140	143	155	132	135	142	140	143	155	

IDB = Entering Indoor Dry Bulb Temperature
 High and low pressures are measured at the liquid and suction service valves.
 Airflow may vary depending on actual ambient conditions and system operation modes.
 Shaded area is ACCA (TVA) conditions
 kW = Total system power
 Amps = outdoor unit amps (comp. + fan)

EXPANDED COOLING DATA — AXV9SA6010B* / AHVE60DP1300A*

IDB	AIRFLOW	OUTDOOR AMBIENT TEMPERATURE																							
		65°F				75°F				85°F				95°F				105°F				115°F			
		59	63	67	71	59	63	67	71	59	63	67	71	59	63	67	71	59	63	67	71	59	63	67	71
80	MBh	40.3	48.2	53.5	55.8	49.5	52.1	53.7	56.0	50.6	51.3	52.9	55.3	48.8	49.5	53.1	53.5	46.1	46.9	48.6	51.2	41.9	43.2	44.7	47.1
	S/T	0.91	0.98	0.61	0.48	0.86	0.75	0.62	0.48	0.84	0.77	0.64	0.50	1.00	0.78	0.65	0.52	0.99	0.80	0.67	0.53	0.99	0.88	0.75	0.80
	ΔT	28	34	25	21	29	28	24	20	29	28	24	20	29	27	23	20	28	26	23	19	28	26	23	26
	kW	2.23	2.68	3.70	3.74	3.36	4.16	4.15	4.18	4.65	4.65	4.64	4.68	5.18	5.18	5.21	5.21	5.73	5.72	5.73	5.79	4.88	4.52	4.51	4.02
	Amps	8.6	10.1	13.5	13.7	12.7	15.5	15.4	15.6	17.6	17.6	17.6	17.7	19.9	19.9	19.9	20.0	22.6	22.6	22.5	22.7	22.1	20.5	20.5	18.3
	Hi PR	256	266	276	281	311	320	321	326	366	367	369	374	418	419	421	426	474	475	477	482	528	524	526	524
	Lo PR	119	123	121	130	120	120	126	136	121	125	131	141	125	128	135	145	128	132	138	148	134	140	147	164
	MBh	44.4	50.9	54.3	56.6	52.6	52.9	54.5	56.8	51.4	52.2	53.7	56.1	49.6	50.4	53.5	54.4	46.4	47.8	49.5	52.1	42.7	43.9	45.5	47.9
	S/T	0.97	0.86	0.69	0.55	0.93	0.82	0.69	0.55	1.01	0.84	0.71	0.57	1.00	0.85	0.72	0.59	0.99	0.87	0.74	0.61	0.99	0.96	0.82	0.88
	ΔT	27	26	23	19	28	26	23	19	28	26	23	19	27	25	22	18	27	25	21	18	27	25	22	25
kW	2.51	3.03	3.73	3.77	3.65	4.19	4.18	4.22	4.69	4.68	4.67	4.71	5.21	5.21	5.35	5.34	5.70	5.77	5.77	5.83	4.50	4.51	4.53	4.22	
Amps	9.6	11.3	12.8	13.0	13.6	15.0	14.9	15.1	17.3	17.3	17.3	17.4	19.8	19.8	19.8	19.9	22.7	22.6	22.6	22.8	20.7	20.6	20.6	18.4	
Hi PR	263	271	279	284	317	322	324	329	369	370	372	377	421	422	424	429	477	478	480	485	525	526	528	527	
Lo PR	119	119	123	132	120	122	128	138	123	127	133	143	127	130	137	147	130	133	140	150	138	142	149	166	
MBh	49.1	54.2	55.3	57.6	53.2	53.9	55.5	57.8	52.4	53.2	54.7	57.1	50.6	51.4	55.0	55.4	47.3	48.2	49.8	52.4	42.9	44.2	45.7	48.1	
S/T	1.00	0.89	0.72	0.59	0.93	0.86	0.73	0.59	1.01	0.88	0.75	0.61	1.00	0.89	0.76	0.62	0.99	0.91	0.78	0.64	0.99	0.99	0.99	0.91	
ΔT	34	25	22	18	27	25	21	18	27	25	21	18	26	24	21	17	26	24	20	17	26	30	27	24	
kW	2.73	3.28	3.75	3.79	4.22	4.21	4.20	4.24	4.71	4.71	4.70	4.73	5.24	5.23	5.27	5.26	5.70	5.72	5.71	5.77	4.56	4.04	4.04	4.06	
Amps	10.3	12.1	13.8	13.9	15.7	15.7	15.7	15.8	17.8	17.8	17.8	17.9	20.2	20.2	20.1	20.3	22.8	22.8	22.7	22.9	20.7	18.4	18.4	18.5	
Hi PR	271	277	282	287	324	325	327	332	372	373	375	379	423	425	426	431	480	481	483	488	528	523	525	530	
Lo PR	124	120	125	135	121	124	131	141	125	129	135	146	129	132	139	149	132	136	142	153	140	150	157	169	

85	MBh	43.2	50.9	54.4	56.7	52.7	53.0	54.5	56.9	51.5	52.2	53.8	56.2	49.7	50.4	54.0	54.4	45.5	46.2	47.8	50.2	38.1	38.7	40.1	39.1
	S/T	1.00	0.88	0.71	0.57	1.00	0.85	0.71	0.58	1.00	0.86	0.73	0.60	1.00	0.88	0.75	0.61	0.99	0.89	0.76	0.63	0.99	0.99	0.85	0.72
	ΔT	32	31	28	25	33	31	28	24	33	31	28	24	32	31	27	23	32	30	26	23	32	30	27	23
	kW	2.40	3.01	3.71	3.74	3.63	4.16	4.16	4.19	4.66	4.66	4.65	4.69	5.19	5.19	5.22	5.22	5.55	5.54	5.54	5.58	4.53	4.53	4.52	4.02
	Amps	9.2	11.2	13.6	13.7	13.6	15.5	15.5	15.6	17.6	17.6	17.6	17.8	20.0	20.0	19.9	20.1	22.6	22.6	22.6	22.7	20.6	20.6	20.5	18.3
	Hi PR	260	270	278	282	316	321	323	328	367	368	370	375	419	420	422	427	475	476	478	483	524	525	527	523
	Lo PR	120	119	122	132	120	122	128	138	123	126	133	143	126	130	136	147	130	133	140	150	138	141	148	162
	MBh	47.3	54.1	55.2	57.5	53.1	53.8	55.3	57.7	52.3	53.0	54.6	57.0	50.5	51.3	54.8	55.3	46.2	46.9	48.5	50.9	38.8	39.4	37.8	39.7
	S/T	1.00	0.95	0.79	0.65	1.00	0.92	0.79	0.65	1.00	0.94	0.81	0.67	1.00	0.95	0.82	0.68	0.99	0.97	0.84	0.70	0.99	0.99	0.94	0.80
	ΔT	31	30	27	23	32	30	26	23	32	30	26	23	31	29	26	22	30	28	25	21	30	29	25	21
kW	2.70	3.27	3.74	3.78	4.20	4.20	4.19	4.22	4.69	4.69	4.68	4.72	5.22	5.22	5.25	5.25	5.58	5.56	5.56	5.61	4.55	4.55	4.02	4.04	
Amps	10.2	12.1	13.7	13.9	15.6	15.6	15.6	15.7	17.8	17.8	17.7	17.9	20.1	20.1	20.1	20.2	22.7	22.7	22.7	22.8	20.7	20.7	18.3	18.4	
Hi PR	267	275	280	285	322	324	326	330	370	371	373	378	422	423	425	430	478	479	481	486	527	528	521	526	
Lo PR	120	120	124	134	120	124	130	140	125	128	135	145	128	132	138	149	131	135	142	152	140	143	153	164	
MBh	48.2	55.1	56.2	58.5	54.1	54.8	56.3	58.7	53.3	54.1	55.6	58.0	51.5	52.3	56.0	56.3	47.3	47.9	49.5	52.0	39.6	40.3	38.7	40.6	
S/T	1.00	0.99	0.82	0.68	1.00	0.95	0.82	0.69	1.00	0.97	0.84	0.71	1.00	0.99	0.86	0.72	0.99	0.99	0.87	0.74	0.99	0.99	0.98	0.84	
ΔT	30	29	26	22	31	29	25	21	31	29	25	21	30	28	24	21	29	27	24	20	29	28	24	20	
kW	2.72	3.29	3.76	3.80	4.22	4.22	4.21	4.25	4.72	4.72	4.71	4.74	5.25	5.24	5.28	5.27	5.60	5.59	5.59	5.63	4.57	4.56	4.03	4.05	
Amps	10.3	12.1	13.8	14.0	15.7	15.7	15.7	15.8	17.9	17.9	17.8	18.0	20.2	20.2	20.2	20.3	22.8	22.8	22.8	22.9	20.8	20.8	18.4	18.5	
Hi PR	269	278	283	288	325	326	328	333	373	374	376	381	425	426	428	433	481	482	484	489	529	531	524	528	
Lo PR	122	122	127	137	122	126	132	142	127	130	137	147	130	134	141	151	134	137	144	155	142	145	155	166	

IDB = Entering Indoor Dry Bulb Temperature
 High and low pressures are measured at the liquid and suction service valves.
 Airflow may vary depending on actual ambient conditions and system operation modes.

Shaded area is AHRI conditions
 kW = Total system power
 Amps = outdoor unit amps (comp.-fian)

PERFORMANCE DATA FOR STANDARD OPERATING MODE

AXV9SA2410A* / AHVE36CP1300A*				
DESIGN SUBCOOLING @ AHRI 95 °F CONDITIONS, 13-15 °F - 100 % DEMAND				
OUTDOOR TEMP. °F	TOTAL BTU/H	SENSIBLE BTU/H	LATENT BTU/H	TOTAL WATTS
75°	26,000	18,500	7,500	1,720
80°	25,400	18,300	7,100	1,815
85°	24,700	18,000	6,700	1,910
90°	24,000	17,700	6,300	2,010
95°	23,200	17,400	5,800	2,110
100°	22,200	17,000	5,200	2,220
105°	21,100	16,500	4,600	2,330
110°	20,300	16,400	3,900	2,460
115°	19,400	16,300	3,100	2,590
TVA Conditions @ 95° OD DB, 75° ID, 63° ID WB				
95°	22,200	17,100	5,100	2,110

AXV9SA2410A* / AHVE36CP1300A*				
DESIGN SUBCOOLING @ AHRI 95 °F CONDITIONS, 13-15 °F - BOOST MODE				
OUTDOOR TEMP. °F	TOTAL BTU/H	SENSIBLE BTU/H	LATENT BTU/H	TOTAL WATTS
75°	33,600	22,200	11,400	2,200
80°	32,800	22,100	10,700	2,300
85°	31,900	22,000	9,900	2,450
90°	30,800	21,600	9,200	2,600
95°	29,700	21,100	8,600	2,700
100°	28,500	20,700	7,800	2,900
105°	27,300	20,200	7,100	3,000
110°	26,200	20,000	6,200	3,200
115°	25,100	19,800	5,300	3,350
TVA Conditions @ 95° OD DB, 75° ID, 63° ID WB				
95°	28,700	20,700	8,000	2,700

AXV9SA3610A* / AHVE48DP1300A*				
DESIGN SUBCOOLING @ AHRI 95 °F CONDITIONS, 8-10 °F - 100 % DEMAND				
OUTDOOR TEMP. °F	TOTAL BTU/H	SENSIBLE BTU/H	LATENT BTU/H	TOTAL WATTS
75°	41,000	30,300	10,700	2,530
80°	39,800	30,000	9,800	2,695
85°	38,500	29,600	8,900	2,860
90°	36,800	28,700	8,100	3,095
95°	35,000	27,700	7,300	3,330
100°	33,600	26,900	6,700	3,480
105°	32,100	26,000	6,100	3,630
110°	30,600	25,700	4,900	3,865
115°	29,100	25,300	3,800	4,100
TVA Conditions @ 95° OD DB, 75° ID, 63° ID WB				
95°	34,100	27,300	6,800	3,230

AXV9SA3610A* / AHVE48DP1300A*				
DESIGN SUBCOOLING @ AHRI 95 °F CONDITIONS, 8-10 °F - BOOST MODE				
OUTDOOR TEMP. °F	TOTAL BTU/H	SENSIBLE BTU/H	LATENT BTU/H	TOTAL WATTS
75°	59,100	38,400	20,700	3,600
80°	57,300	37,800	19,500	3,900
85°	55,500	37,200	18,300	4,150
90°	53,200	36,200	17,000	4,400
95°	50,900	35,100	15,800	4,700
100°	48,500	34,200	14,300	5,000
105°	46,100	33,200	12,900	5,350
110°	37,600	29,200	8,400	4,800
115°	29,000	25,200	3,800	4,200
TVA Conditions @ 95° OD DB, 75° ID, 63° ID WB				
95°	49,100	34,400	14,700	4,700

PERFORMANCE DATA FOR STANDARD OPERATING MODE (CONT.)

AXV9SA4810A* / AHVE60DP1300A*				
DESIGN SUBCOOLING @ AHRI 95 °F CONDITIONS, 8-10 °F				
- 100 % DEMAND				
OUTDOOR TEMP. °F	TOTAL BTU/H	SENSIBLE BTU/H	LATENT BTU/H	TOTAL WATTS
75°	51,200	34,300	16,900	3,710
80°	50,200	34,400	15,800	3,945
85°	49,100	34,400	14,700	4,180
90°	47,800	34,000	13,800	4,415
95°	46,500	33,500	13,000	4,650
100°	44,700	32,600	12,100	4,945
105°	42,900	31,700	11,200	5,240
110°	39,000	29,900	9,100	5,120
115°	35,100	28,100	7,000	5,000
TVA CONDITIONS @ 95° OD DB, 75° ID, 63° ID WB				
95°	44,500	32,500	12,000	4,690

AXV9SA4810A* / AHVE60DP1300A*				
DESIGN SUBCOOLING @ AHRI 95 °F CONDITIONS, 8-10 °F				
- BOOST MODE				
OUTDOOR TEMP. °F	TOTAL BTU/H	SENSIBLE BTU/H	LATENT BTU/H	TOTAL WATTS
75°	61,800	38,900	22,900	5,400
80°	61,200	38,900	22,300	5,850
85°	60,600	38,800	21,800	6,300
90°	58,800	38,300	20,500	6,800
95°	55,900	37,500	18,400	6,850
100°	50,100	35,800	14,300	6,250
105°	44,300	34,000	10,300	5,650
110°	39,700	31,000	8,700	5,300
115°	35,100	28,000	7,100	5,000
TVA CONDITIONS @ 95° OD DB, 75° ID, 63° ID WB				
95°	53,700	36,500	17,200	6,900

AXV9SA6010B* / AHVE60DP1300A*				
DESIGN SUBCOOLING @ AHRI 95 °F CONDITIONS, 10-12 °F				
- 100 % DEMAND				
OUTDOOR TEMP. °F	TOTAL BTU/H	SENSIBLE BTU/H	LATENT BTU/H	TOTAL WATTS
75°	54,500	37,600	16,900	4,180
80°	54,100	37,900	16,200	4,400
85°	53,700	38,100	15,600	4,670
90°	53,600	37,800	15,800	5,000
95°	53,500	38,520	15,100	5,350
100°	51,000	37,300	13,700	5,500
105°	49,500	36,200	13,300	5,770
110°	47,500	34,600	12,900	5,490
115°	45,500	36,800	8,700	5,200
TVA CONDITIONS @ 95° OD DB, 75° ID, 63° ID WB				
95°	50,100	36,600	13,500	5,210

AXV9SA6010B* / AHVE60DP1300A*				
DESIGN SUBCOOLING @ AHRI 95 °F CONDITIONS, 10-12 °F				
- BOOST MODE				
OUTDOOR TEMP. °F	TOTAL BTU/H	SENSIBLE BTU/H	LATENT BTU/H	TOTAL WATTS
75°	62,900	42,600	20,300	4,600
80°	62,600	43,000	19,600	4,900
85°	62,000	43,200	18,800	5,100
90°	61,100	43,100	18,000	5,400
95°	60,000	43,100	16,900	6,000
100°	58,600	43,700	14,900	6,700
105°	57,200	41,700	15,500	6,400
110°	53,600	40,400	13,200	6,300
115°	45,500	36,800	8,700	5,200
TVA CONDITIONS @ 95° OD DB, 75° ID, 63° ID WB				
95°	57,800	41,700	16,100	5,700

SOUND POWER LEVELS

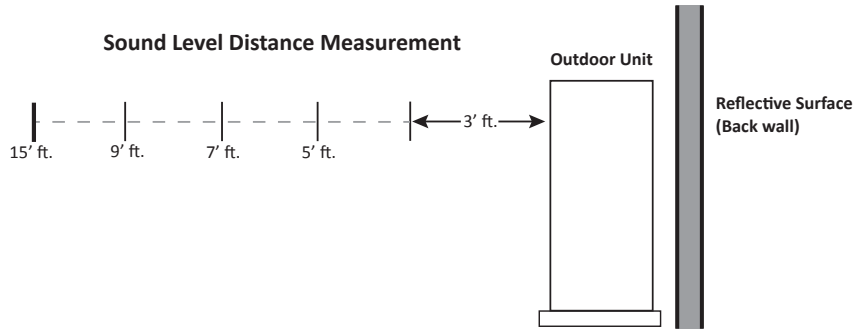
TONNAGE	TOTAL UNIT SOUND RATING (dBA)	OCTAVE BAND SPECTRUM FREQUENCY (Hz) ANALYSIS (dBS)						
		125	250	500	1000	2000	4000	8000
2-ton	67	57.9	58.4	62.9	61.1	55.1	48.3	41.2
3-ton	71	60.3	64.5	65.2	65.8	60.9	54.4	48.1
4-ton	73	62.9	66.4	67.0	67.4	63.0	58.9	50.6
5-ton	77	79.6	76.8	75.5	71.8	67.2	59.0	53.6

Note: Tested in accordance with AHRI Standard 270.

QUIET MODE_COOLING

TONNAGE	SOUND SUPPRESSION LEVEL	SOUND POWER LEVEL (dBA) ¹	SOUND PRESSURE LEVEL (dBA) ²	Capacity Decrease
2-ton	LV.1	65	51	~5%
	LV.2	62	48	~15%
	LV.3	59	45	~35%
3-ton	LV.1	67	55	~5%
	LV.2	62	50	~30%
	LV.3	57	45	~35%
4-ton	LV.1	68	55	~5%
	LV.2	63	50	~30%
	LV.3	58	45	~45%
5-ton	LV.1	72	56	~5%
	LV.2	69	53	~25%
	LV.3	66	45	~50%

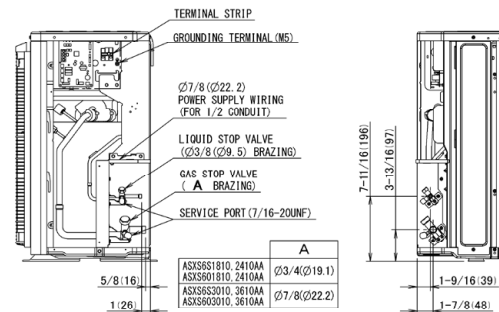
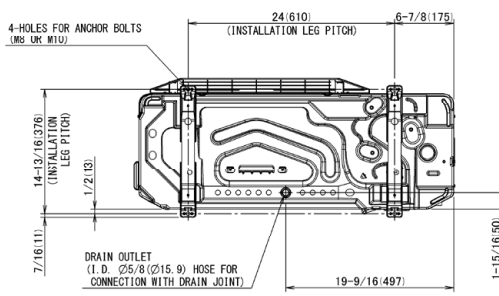
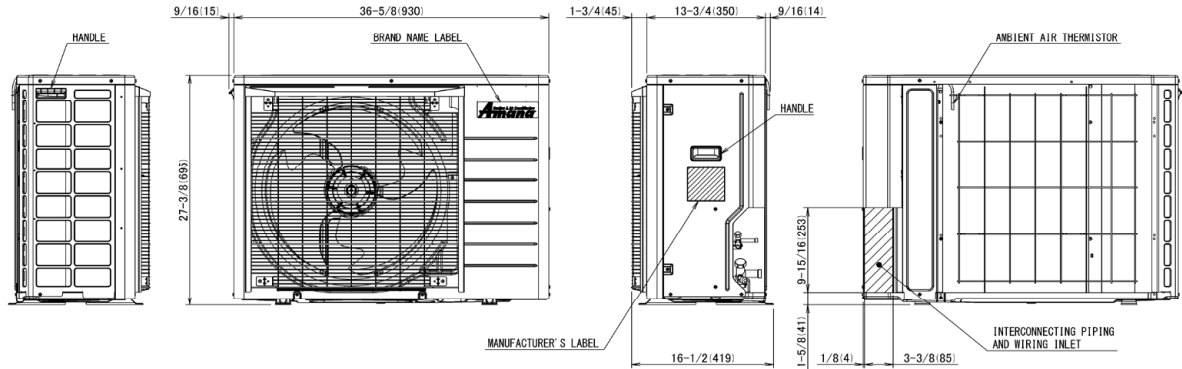
¹ Quiet Mode Sound Power and Sound Pressure levels determined at a distance of 3 [ft].



		SOUND PRESSURE (dBA) COOLING MODE ¹				
		DISTANCE FROM PROPERTY LINE				
TONNAGE	REFLECTIVE SURFACE QTY.	3'	5'	7'	9'	15'
2.0 Ton	0	60	55	52	50	46
	1	63	58	55	53	49
	2	66	61	58	56	52
3.0 Ton	0	64	59	56	54	50
	1	67	62	59	57	53
	2	70	65	62	60	56
4.0 Ton	0	66	61	58	56	52
	1	69	64	61	59	55
	2	72	67	64	62	58
5.0 Ton	0	70	65	62	60	56
	1	73	68	65	63	59
	2	76	71	68	66	62

¹ Compliant with AHRI 275 utilizing standard mode, total sound levels

MODEL	DIMENSIONS		
	W"	D"	H"
AXV9SA2410A*	36 $\frac{5}{8}$	13 $\frac{3}{4}$	27 $\frac{3}{8}$

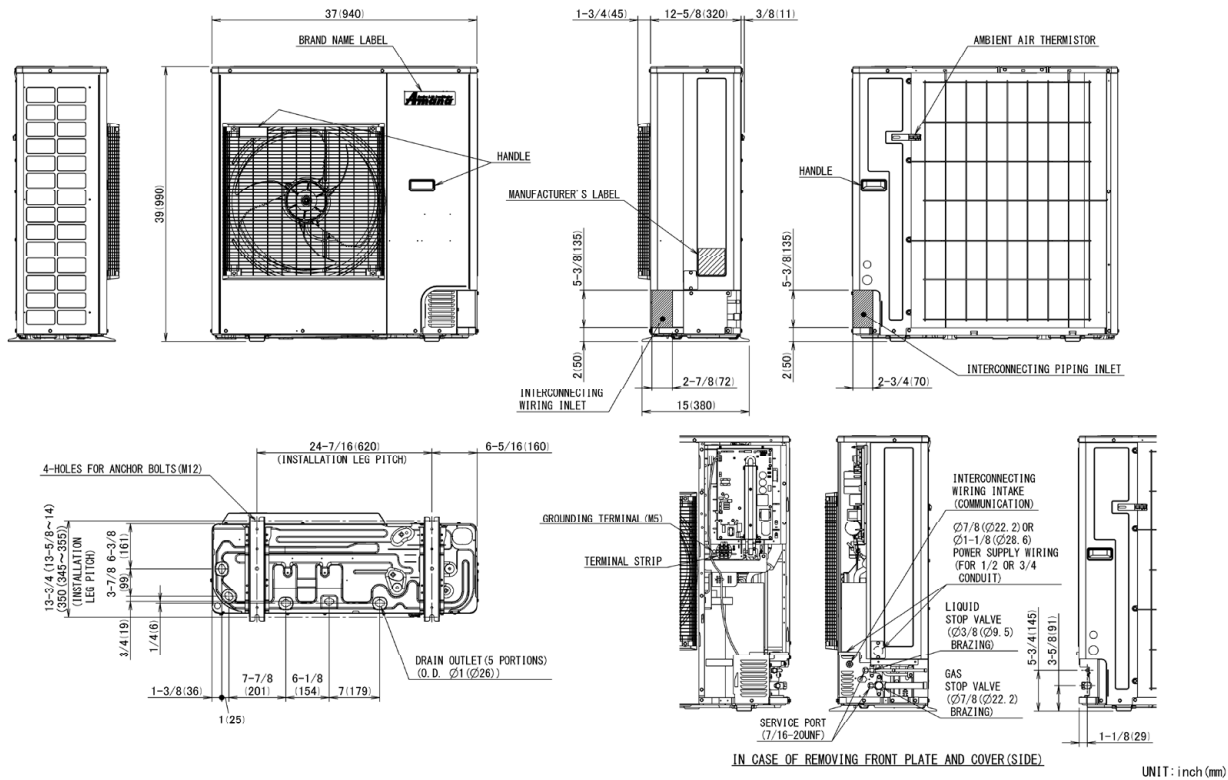


IN CASE OF REMOVING RIGHT SIDE PLATE

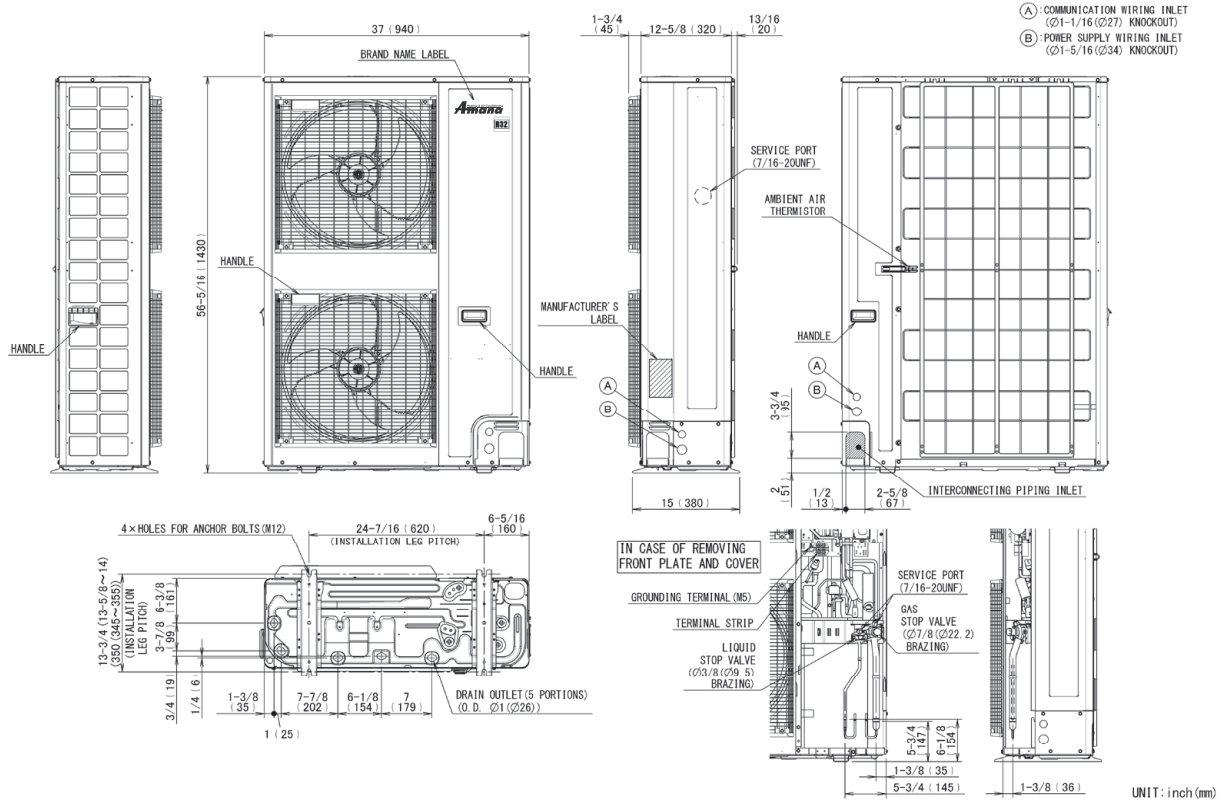
UNIT: inch (mm)

DIMENSIONS (CONT.)

MODEL	DIMENSIONS		
	W"	D"	H"
AXV9SA3610A*	37	12 $\frac{3}{8}$	39
AXV9SA4810A*	37	12 $\frac{3}{8}$	39



MODEL	DIMENSIONS		
	W"	D"	H"
AXV9SA6010B*	37	12%	56 ⁵ / ₁₆



MODEL	DESCRIPTION	AXV9S A2410A*	AXV9S A3610A*	AXV9S A4810A*	AXV9S A6010B*
KPW5G112	Wind Baffle	X	X	X	X ¹ (2)
130-DK-006	Hail Guard	X			
130-DK-008	Hail Guard		X	X	
DACA-WB-3	Powder Coated Wall-Mounted Bracket	X	X	X	
0270R02063 (130-DK-017)	Hail Guard				X
DSEN-HAQA	Daikin One Home Air Monitor				X

¹ Please ensure that 2 nos (KPW5G112) are ordered for each model when placing the order.

All AHRI system ratings are accessible in the System Configurator tool via PartnerLink.

