

*CAPTA, CHPTA PAINTED  
UPFLOW/DOWNFLOW,  
HORIZONTAL "A"*



CAPTA – Cased with Internal TXV



CHPTA – Cased with Internal TXV

## R32

### Standard Features

- All-Aluminum evaporator coil
- Optimized for use with R-32 refrigerant including circuits and manifolds
- R-32 sensor designed for the life span of the coil
- CAPTA and CHPTA models feature factory-installed thermal expansion valves for cooling and heat pump applications
- Standardized copper suction tube stub length
- Vertical and horizontal models available
- 21" depth for easier attic access
- CAPTA and CHPTA models include a single front access panel
- Foil-faced insulation covers the internal casing to reduce cabinet condensation
- Galvanized, leather grain-embossed finish
- Rust resistant, thermoplastic drain pans featuring a low water-retention design
- DecaBDE-free thermoplastic drain pan with secondary drain connections
- Drain pan rails designed to remove and reposition coils with ease without compromising structural integrity
- UV-resistant drain pan
- AHRI certified; ETL listed

**Note:** Do not use these coils on oil furnaces or any applications where the temperature on the drain pan may exceed 300° F. If these coils are applied with an oil furnace or another application where high temperatures threaten or jeopardize the durability of the drain pan, you must replace the factory-installed drain pan with a high-temperature drain pan. High-temperature drain pan kits are available as field-installed accessories.



AlumaFin<sup>7</sup>  
Evaporator Coil



COMPANY WITH  
ENVIRONMENTAL SYSTEM  
CERTIFIED BY DNV GL  
= ISO 14001 =

COMPANY WITH  
QUALITY SYSTEM  
CERTIFIED BY DNV GL  
= ISO 9001 =

\* Complete warranty details available from your local dealer or at [www.amana-hac.com](http://www.amana-hac.com). To receive the 10-Year Parts Limited Warranty, online registration must be completed within 60 days of installation. Online registration is not required in California or Québec.

**NOMENCLATURE**

	C	A	P	T	A	1	8	1	4	A	3	A	A	
	1	2	3	4	5	6	7	8	9	10	11	12	13	
<b>Product Category</b>	C	A	P	T	A	1	8	1	4	A	3	A	A	
C Indoor Coil														
<b>Application</b>	A	H	S											
A Upflow/Downflow Coil														
H Horizontal A Coil														
S Horizontal Slab Coil														
<b>Cabinet Finish</b>	U	P	C											
U Uncased														
P Cased - Painted														
C Cased - Unpainted														
<b>Expansion Device</b>	F	T	E											
F Flowrater														
T TXV														
E Electronic Expansion Valve														
<b>Coil Configuration (7mm)</b>	A													
A A Coil														
											<b>Engineering</b>			
											Major/ Minor Revisions			
											<b>Refrigerant</b>			
											3 - R-32			
											<b>CA &amp; CS Series Width / CH Series Height</b>			
											S - 25½"	A - 14"	D - 24½"	
											M - 33½"	B - 17½"		
											L - 39½"	C - 21"		
											<b>CA Series Height / CH Series Width / CS Series Depth</b>			
											12 - 12" Coil	14 - 14" Coil	22 - 22" Coil	
												18 - 18" Coil	26 - 26" Coil	
											30 - 30" Coil			
													<b>Nominal Capacity</b>	
						18 - 1½ Tons	30 - 3 Tons							42 - 3½ Tons
						24 - 2 Tons	36 - 3 Tons							48 - 4 Tons
														60 - 5 Tons

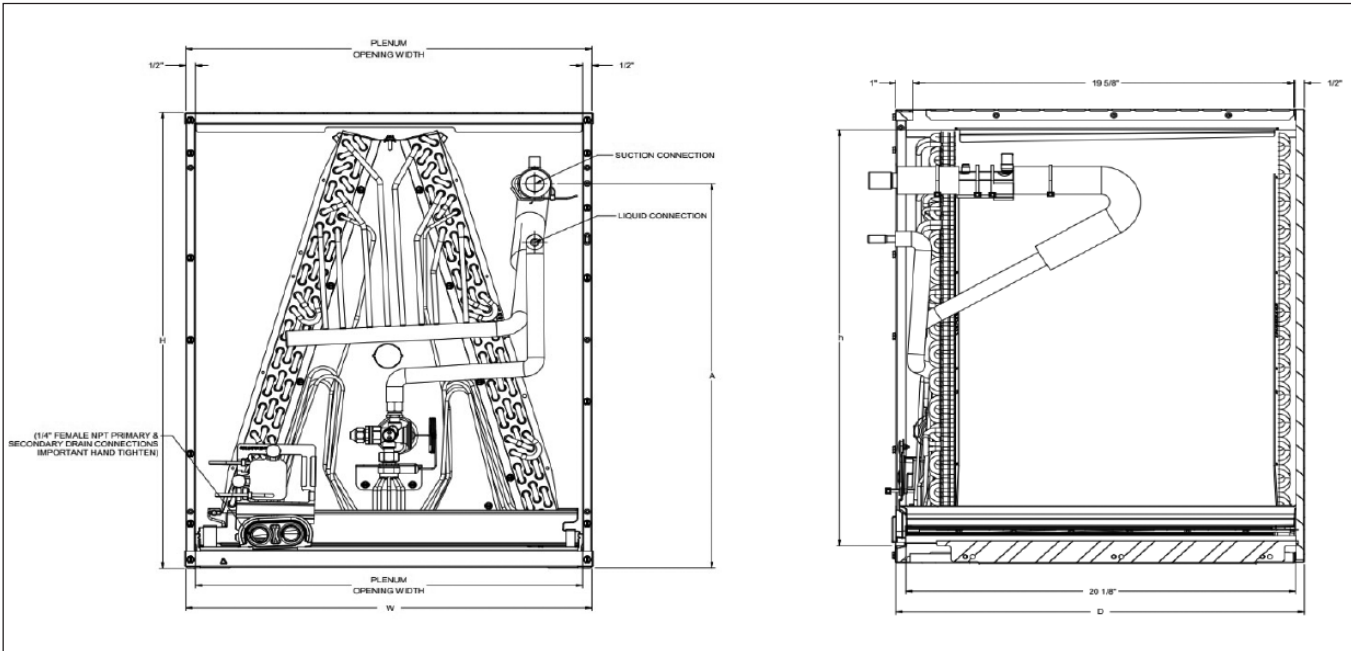
# CAPTA — CASED UPFLOW/DOWNFLOW INDOOR COILS

## SPECIFICATIONS

MODEL	CABINET DIMENSIONS			NOMINAL TONS	CONNECTION		SHIP WEIGHT (LBS)
	W	D	H		LIQUID	SUCTION	
CAPTA1818A3	14"	21"	18"	1½	⅜"	¼"	30
CAPTA1818B3	17½"	21"	18"	1½	⅜"	¼"	35
CAPTA2422A3	14"	21"	22"	1½ - 2	⅜"	¼"	37
CAPTA2422B3	17½"	21"	22"	1½ - 2	⅜"	¼"	40
CAPTA2422C3	21"	21"	22"	1½ - 2	⅜"	¼"	43
CAPTA3022A3	14"	21"	22"	2 - 2½	⅜"	¼"	37
CAPTA3022B3	17½"	21"	22"	2 - 2½	⅜"	¼"	40
CAPTA3022C3	21"	21"	22"	2 - 2½	⅜"	¼"	43
CAPTA3026B3	17½"	21"	26"	1½ - 2½	⅜"	⅝"	46
CAPTA3026C3	21"	21"	26"	1½ - 2½	⅜"	⅝"	51
CAPTA3626B3	17½"	21"	26"	2 - 3	⅜"	⅝"	48
CAPTA3626C3	21"	21"	26"	2 - 3	⅜"	⅝"	51
CAPTA4230C3	21"	21"	30"	2½ - 3½	⅜"	⅝"	66
CAPTA4230D3	24½"	21"	30"	2½ - 3½	⅜"	⅝"	70
CAPTA6030C3	21"	21"	30"	3½ - 5	⅜"	⅝"	66
CAPTA6030D3	24½"	21"	30"	3½ - 5	⅜"	⅝"	70

**Note:** For a properly matched system and piston sizing information, refer to Daikin piston kit chart of the corresponding Daikin outdoor unit.

## DIMENSIONS



# CHPTA— CASED HORIZONTAL INDOOR COILS

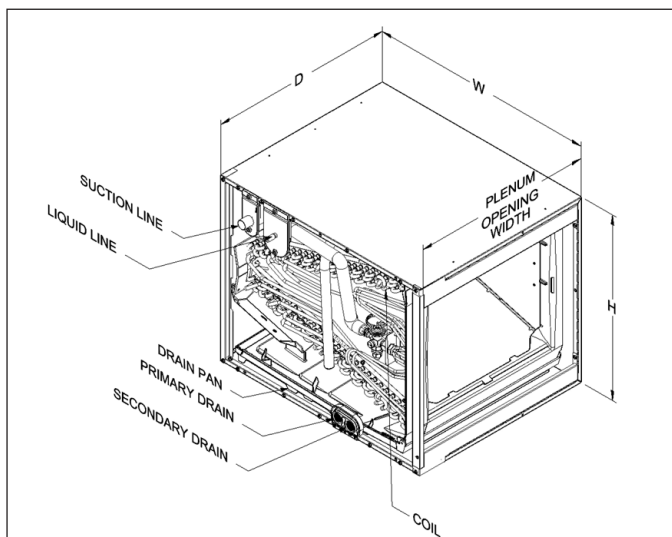
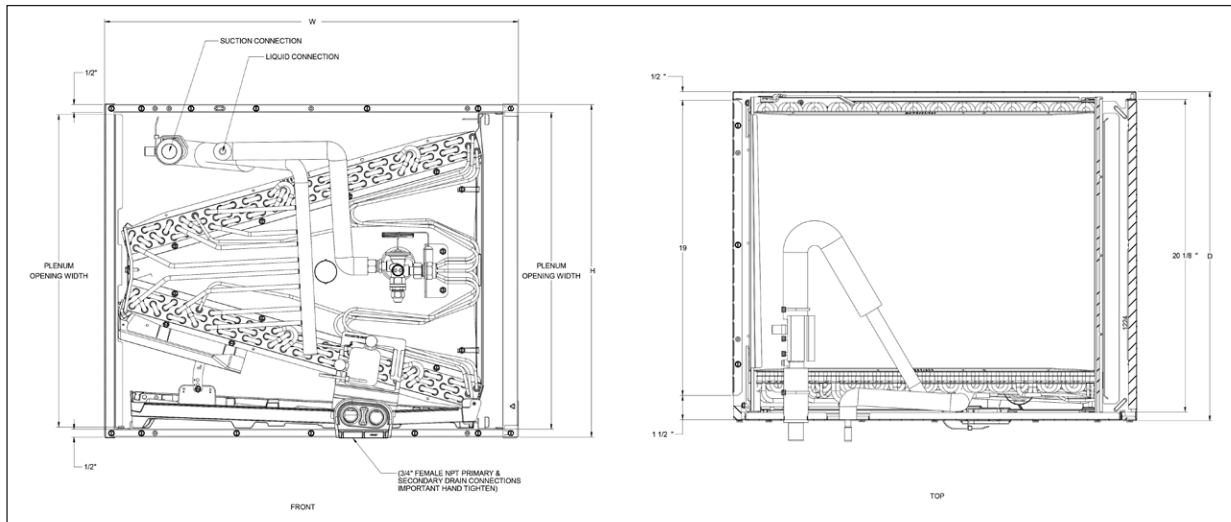


## SPECIFICATIONS

MODEL	CABINET DIMENSIONS			NOMINAL TONS	CONNECTION		SHIP WEIGHT (LBS)
	W	D	H		LIQUID	SUCTION	
CHPTA1822A3	22"	21"	14"	1½	¾"	¾"	46
CHPTA1822B3	22"	21"	17½"	1½	¾"	¾"	50
CHPTA2426B3	26"	21"	17½"	1½ - 2	¾"	7⁄8"	55
CHPTA2426C3	26"	21"	21"	1½ - 2	¾"	7⁄8"	57
CHPTA3026B3	26"	21"	17½"	2 - 2½	¾"	7⁄8"	59
CHPTA3026C3	26"	21"	21"	2 - 2½	¾"	7⁄8"	62
CHPTA3630B3	30"	21"	17½"	2½ - 3	¾"	7⁄8"	66
CHPTA3630C3	30"	21"	21"	2½ - 3	¾"	7⁄8"	70
CHPTA4230C3	30"	21"	21"	2½ - 3½	¾"	7⁄8"	70
CHPTA4830C3	30"	21"	21"	3½ - 4	¾"	7⁄8"	78
CHPTA6030D3	30"	21"	24½"	4 - 5	¾"	7⁄8"	82

**Note:** For a properly matched system and piston sizing information, refer to Daikin piston kit chart of the corresponding Daikin outdoor unit.

## DIMENSIONS



# AIRFLOW DATA FOR CAPTA

## AIR QUANTITY (SCFM) VS. PRESSURE DROP (IN. WC)

	SCFM	400	500	600	700	800	900	1000	1100	1200	1300	1400	1500	1600	1700	1800	1900	2000	2100	2200	
CAPTA1818A3**	Wet	0.080	0.135	0.205	0.275	0.346	0.422	0.516	0.620	0.715	-	-	-	-	-	-	-	-	-	-	-
	Dry	0.074	0.115	0.180	0.239	0.297	0.368	0.443	0.543	0.638	-	-	-	-	-	-	-	-	-	-	-
CAPTA1818B3**	Wet	0.067	0.106	0.165	0.215	0.261	0.317	0.372	0.425	0.482	-	-	-	-	-	-	-	-	-	-	-
	Dry	0.050	0.087	0.125	0.175	0.215	0.265	0.319	0.381	0.444	-	-	-	-	-	-	-	-	-	-	-
CAPTA2422A3**	Wet		0.108	0.150	0.195	0.250	0.310	0.379	0.460	0.543	0.625	-	-	-	-	-	-	-	-	-	-
	Dry		0.088	0.125	0.170	0.215	0.265	0.320	0.385	0.440	0.535	-	-	-	-	-	-	-	-	-	-
CAPTA2422B3**	Wet		0.090	0.130	0.150	0.220	0.250	0.310	0.369	0.436	0.508	-	-	-	-	-	-	-	-	-	-
	Dry		0.082	0.100	0.140	0.170	0.210	0.260	0.300	0.350	0.410	-	-	-	-	-	-	-	-	-	-
CAPTA2422C3**	Wet		0.091	0.110	0.139	0.172	0.205	0.245	0.285	0.335	0.387	-	-	-	-	-	-	-	-	-	-
	Dry		0.069	0.084	0.111	0.133	0.162	0.185	0.210	0.250	0.295	-	-	-	-	-	-	-	-	-	-
CAPTA3022A3**	Wet			0.150	0.195	0.250	0.310	0.379	0.460	0.543	0.625	0.730	-	-	-	-	-	-	-	-	-
	Dry			0.125	0.170	0.215	0.265	0.320	0.385	0.440	0.535	0.618	-	-	-	-	-	-	-	-	-
CAPTA3022B3**	Wet			0.130	0.150	0.220	0.250	0.310	0.369	0.436	0.508	0.584	-	-	-	-	-	-	-	-	-
	Dry			0.100	0.140	0.170	0.210	0.260	0.300	0.350	0.410	0.480	-	-	-	-	-	-	-	-	-
CAPTA3022C3**	Wet			0.110	0.139	0.172	0.205	0.245	0.285	0.335	0.387	0.437	-	-	-	-	-	-	-	-	-
	Dry			0.084	0.111	0.133	0.162	0.185	0.210	0.250	0.295	0.330	-	-	-	-	-	-	-	-	-
CAPTA3026B3**	Wet			0.115	0.150	0.190	0.229	0.270	0.310	0.365	0.420	0.475	-	-	-	-	-	-	-	-	-
	Dry			0.096	0.122	0.150	0.183	0.215	0.252	0.292	0.334	0.382	-	-	-	-	-	-	-	-	-
CAPTA3026C3**	Wet			0.090	0.110	0.140	0.170	0.200	0.240	0.280	0.320	0.370	-	-	-	-	-	-	-	-	-
	Dry			0.080	0.100	0.120	0.150	0.180	0.210	0.240	0.260	0.300	-	-	-	-	-	-	-	-	-
CAPTA3626B3**	Wet					0.134	0.167	0.204	0.245	0.290	0.338	0.389	0.444	0.485	-	-	-	-	-	-	-
	Dry					0.127	0.157	0.190	0.229	0.269	0.316	0.360	0.415	0.450	-	-	-	-	-	-	-
CAPTA3626C3**	Wet					0.100	0.120	0.150	0.180	0.210	0.240	0.280	0.310	0.360	-	-	-	-	-	-	-
	Dry					0.080	0.100	0.130	0.150	0.170	0.200	0.230	0.270	0.300	-	-	-	-	-	-	-
CAPTA4230C3**	Wet							0.130	0.150	0.180	0.210	0.250	0.280	0.310	0.340	0.378	0.414	-	-	-	-
	Dry							0.110	0.132	0.156	0.181	0.208	0.237	0.270	0.300	0.335	0.372	-	-	-	-
CAPTA4230D3**	Wet							0.120	0.140	0.160	0.190	0.220	0.250	0.280	0.310	0.350	0.380	-	-	-	-
	Dry							0.091	0.109	0.127	0.147	0.160	0.190	0.210	0.230	0.260	0.280	-	-	-	-
CAPTA6030C3**	Wet							0.150	0.174	0.210	0.240	0.270	0.310	0.350	0.400	0.440	0.490	0.540	0.600	0.660	-
	Dry							0.133	0.160	0.190	0.210	0.250	0.280	0.320	0.350	0.390	0.440	0.480	0.530	0.590	-
CAPTA6030D3**	Wet							0.150	0.180	0.210	0.230	0.270	0.300	0.340	0.380	0.430	0.477	0.520	-	-	-
	Dry							0.120	0.140	0.160	0.190	0.210	0.230	0.260	0.290	0.320	0.350	0.380	-	-	-

## AIRFLOW DATA FOR CHPTA

### AIR QUANTITY (SCFM) VS. PRESSURE DROP (IN. WC)

	SCFM	400	500	600	700	800	900	1000	1100	1200	1300	1400	1500	1600	1700	1800	1900	2000	2100	2200	
<b>CHPTA1822A3**</b>	Wet	0.095	0.151	0.215	0.284	0.354	0.429	0.519	0.601												
	Dry	0.064	0.094	0.144	0.199	0.284	0.353	0.431	0.513												
<b>CHPTA1822B3**</b>	Wet	0.090	0.120	0.140	0.190	0.250	0.310	0.390	0.460												
	Dry	0.080	0.110	0.130	0.180	0.230	0.290	0.360	0.430												
<b>CHPTA2426C3**</b>	Wet		0.130	0.150	0.180	0.204	0.255	0.304	0.365	0.419	0.468										
	Dry		0.100	0.120	0.150	0.170	0.210	0.240	0.290	0.330	0.410										
<b>CHPTA2426C3**</b>	Wet		0.110	0.140	0.160	0.180	0.200	0.230	0.270	0.320	0.370	0.430									
	Dry		0.090	0.110	0.130	0.150	0.190	0.220	0.260	0.300	0.350										
<b>CHPTA3026B3**</b>	Wet			0.110	0.150	0.180	0.230	0.280	0.320	0.370	0.430	0.490									
	Dry			0.120	0.140	0.170	0.210	0.250	0.290	0.340	0.400	0.460									
<b>CHPTA3026C3**</b>	Wet			0.100	0.130	0.150	0.170	0.200	0.230	0.260	0.300	0.340									
	Dry			0.060	0.080	0.110	0.130	0.150	0.174	0.198	0.229	0.259									
<b>CHPTA3630B3**</b>	Wet			0.150	0.187	0.229	0.279	0.323	0.372	0.430	0.465										
	Dry			0.128	0.153	0.191	0.237	0.285	0.330	0.377	0.428										
<b>CHPTA3630C3**</b>	Wet			0.140	0.175	0.205	0.245	0.285	0.325	0.365	0.410										
	Dry			0.086	0.105	0.135	0.155	0.185	0.210	0.245	0.279										
<b>CHPTA4230C3**</b>	Wet			0.140	0.175	0.205	0.245	0.285	0.325	0.365	0.410										
	Dry			0.086	0.105	0.135	0.155	0.185	0.210	0.245	0.279										
<b>CHPTA4830C3**</b>	Wet							0.210	0.250	0.304	0.352	0.402	0.457	0.510	0.570	0.630	0.693	0.761	0.831	0.894	
	Dry							0.163	0.194	0.226	0.263	0.297	0.337	0.381	0.420	0.470	0.520	0.580	0.630	0.690	
<b>CHPTA6030D3**</b>	Wet							0.161	0.189	0.221	0.254	0.292	0.332	0.370	0.413	0.461	0.502				
	Dry							0.140	0.160	0.190	0.220	0.250	0.283	0.314	0.351	0.389	0.402				

## ACCESSORIES

### DRAIN PAN INSULATION KITS FOR CAPTA

KIT NUMBER	CABINET WIDTH
DPICX-AB	14"
DPICX-BB	17½"
DPICX-CB	21"
DPICX-DB	24½"
DPICX-DC (Use only for CAPTA6030D3, CAPFA6030D3 and CAUTA6030D3)	24½"

### UV-C PART NUMBERS

MODELS	LAMP
UC18S15-24	UCP-16013
UC18S15-24B	UCP-16012

### HORIZONTAL RIGHT COIL ACCESSORY FOR HIGH HUMIDITY ENVIRONMENT FOR CHPTA

DRAIN PAN KITS	FURNACE SIZE
HHCMK01	All Horizontal cabinets

### R32 ACCESSORY KIT FOR NON-A2L FURNACE FOR CAPTA, CHPTA

KIT NUMBER	FURNACE TYPE
0230K00044	Non-A2L furnaces

### R32 ZONING ACCESSORY KIT FOR CAPTA, CHPTA

KIT NUMBER	MODELS
0230K00007	All CAPTA, CHPTA models

