



Air Conditioning & Heating

GMES92

HEATING INPUT: 40,000–120,000 BTU/H

SINGLE-STAGE, MULTI-SPEED ECM GAS FURNACE UP TO 92% AFUE



Contents

| | |
|-----------------------------|----|
| Nomenclature..... | 2 |
| Product Specifications..... | 3 |
| Dimensions | 4 |
| Airflow Specifications..... | 5 |
| Wiring Diagram..... | 10 |
| Accessories | 11 |

Standard Features

- Heavy-duty aluminized-steel tubular heat exchanger
- Stainless-steel secondary heat exchanger
- Single-stage gas valve
- Durable Silicon Nitride igniter
- Multi-speed ECM blower motor
- Quiet single-speed induced draft blower
- Self-diagnostic control board
- All models comply with California 40 ng/J Low NOx emissions standard
- Can no longer be installed in California’s South Coast Air Quality Management District (SCAQMD) on or after October 1, 2019.
- AHRI Certified; ETL Listed

Cabinet Features

- Designed for multi-position installation — GMES92: upflow, horizontal left or right
- Certified for direct vent (2-pipe) or non-direct vent (1-pipe)
- Easy-to-install top venting with optional side venting — GMES92/upflow models only
- Convenient left or right connection for gas and electrical service
- Cabinet air leakage ($Q_{Leak} \leq 2\%$)
- Heavy-gauge steel cabinet with durable finish
- Foil-faced insulated heat exchanger cabinet
- Airtight solid bottom or side return with easy-cut tabs for effortless removal in bottom air-inlet applications



* Complete warranty details available from your local dealer or at www.goodmanmfg.com. To receive the Lifetime Heat Exchanger Limited Warranty (good for as long as you own your home) and 10-Year Parts Limited Warranty, online registration must be completed within 60 days of installation. Online registration is not required in California or Quebec.

| | G | M | E | S | 92 | 060 | 3 | B | N | ** | |
|----------------------|--|----------|----------|----------|------------|--------------|-----------|-----------|-----------|--------------|---|
| | 1 | 2 | 3 | 4 | 5,6 | 7,8,9 | 10 | 11 | 12 | 13,14 | |
| BRAND | G - Goodman® Brand | | | | | | | | | | ENGINEERING |
| | | | | | | | | | | | Major / Minor Revisions * Not used for inventory control. |
| CONFIGURATION | M - Upflow/Horizontal C - Downflow/Horizontal | | | | | | | | | | NOX |
| | | | | | | | | | | | N - Low NOx |
| MOTOR | V - Variable Speed ECM / ComfortNet E - Multi-Speed ECM S - Single Speed | | | | | | | | | | CABINET WIDTH |
| | | | | | | | | | | | A - 14" C - 21" B - 17½" D - 24½" |
| GAS VALVE | M - Modulating C - Two- Stage S - Single Stage | | | | | | | | | | MAXIMUM CFM |
| | | | | | | | | | | | 2 - 800 CFM 4 - 1600 CFM 3 - 1200 CFM 5 - 2000 CFM |
| AFUE | 97 - 97% AFUE 96 - 96% AFUE 92 - 92% AFUE | | | | | | | | | | MBTU/H |
| | | | | | | | | | | | 040 - 40,000 BTU/h 060 - 60,000 BTU/h 120 - 120,000 BTU/h |

| | GMES92 0403AN | GMES92 0603BN | GMES92 0803BN | GMES92 0804CN | GMES92 0805CN | GMES92 1004CN | GMES92 1005CN | GMES92 1205DN |
|---|---|------------------------------------|------------------------------------|------------------------------------|---|------------------------------------|---|---|
| HEATING DATA | | | | | | | | |
| High Fire Input ¹ | 40,000 | 60,000 | 80,000 | 80,000 | 80,000 | 100,000 | 100,000 | 120,000 |
| High Fire Output ¹ | 36,840 | 55,260 | 73,680 | 73,680 | 73,680 | 92,100 | 92,100 | 110,520 |
| AFUE ² | 92 | 92 | 92 | 92 | 92 | 92 | 92 | 92 |
| Temperature Rise Range (°F) | 30-60 | 35-65 | 35-65 | 35-65 | 25-55 | 35-65 | 35-65 | 35-65 |
| Vent Diameter ³ | 2" - 3" | 2" - 3" | 2" - 3" | 2" - 3" | 2" - 3" | 2" - 3" | 2" - 3" | 3" |
| NO. OF BURNERS | 2 | 3 | 4 | 4 | 4 | 5 | 5 | 6 |
| CIRCULATOR BLOWER | | | | | | | | |
| Available AC @ 0.5" ESP | 1.5 - 3 | 1.5 - 3 | 1.5 - 3 | 43,528 | 3 - 5 | 3 - 5 | 3 - 5 | 3 - 5 |
| Size (D x W) | 10" x 6" | 10" x 8" | 10" x 8" | 10" x 10" | 11" x 10" | 10" x 10" | 11" x 10" | 11" x 11" |
| Horsepower @ 1075 RPM | 1/2 | 1/2 | 1/2 | 3/4 | 1 | 3/4 | 1 | 1 |
| Speed | 5 | 5 | 5 | 5 | 5 | 5 | 5 | 5 |
| FILTER SIZE (IN²) (QTY) | (1) 16 x 25 (side) or (1) 14 X 25 (bottom) | (1) 16 x 25 (side or bottom) | (1) 16 x 25 (side or bottom) | (1) 16 x 25 (side or bottom) | (1) 20 x 25 (bottom) or (2) 16 x 25 (side) | (1) 16 x 25 (side or bottom) | (1) 20 x 25 (bottom) or (2) 16 x 25 (side) | (1) 20 x 25 (bottom) or (2) 16 x 25 (side) |
| ELECTRICAL DATA | | | | | | | | |
| Min. Circuit Ampacity ⁴ | 10.3 | 10.3 | 10.3 | 14.1 | 16.9 | 14.1 | 16.9 | 16.9 |
| Max. Overcurrent Device (amps) ⁵ | 15 | 15 | 15 | 15 | 20 | 15 | 20 | 20 |
| SHIPPING WEIGHT (LBS) | 106 | 114 | 117 | 139 | 140 | 141 | 141 | 154 |

¹ Natural Gas BTU/h

² DOE AFUE based upon Isolated Combustion System (ICS)

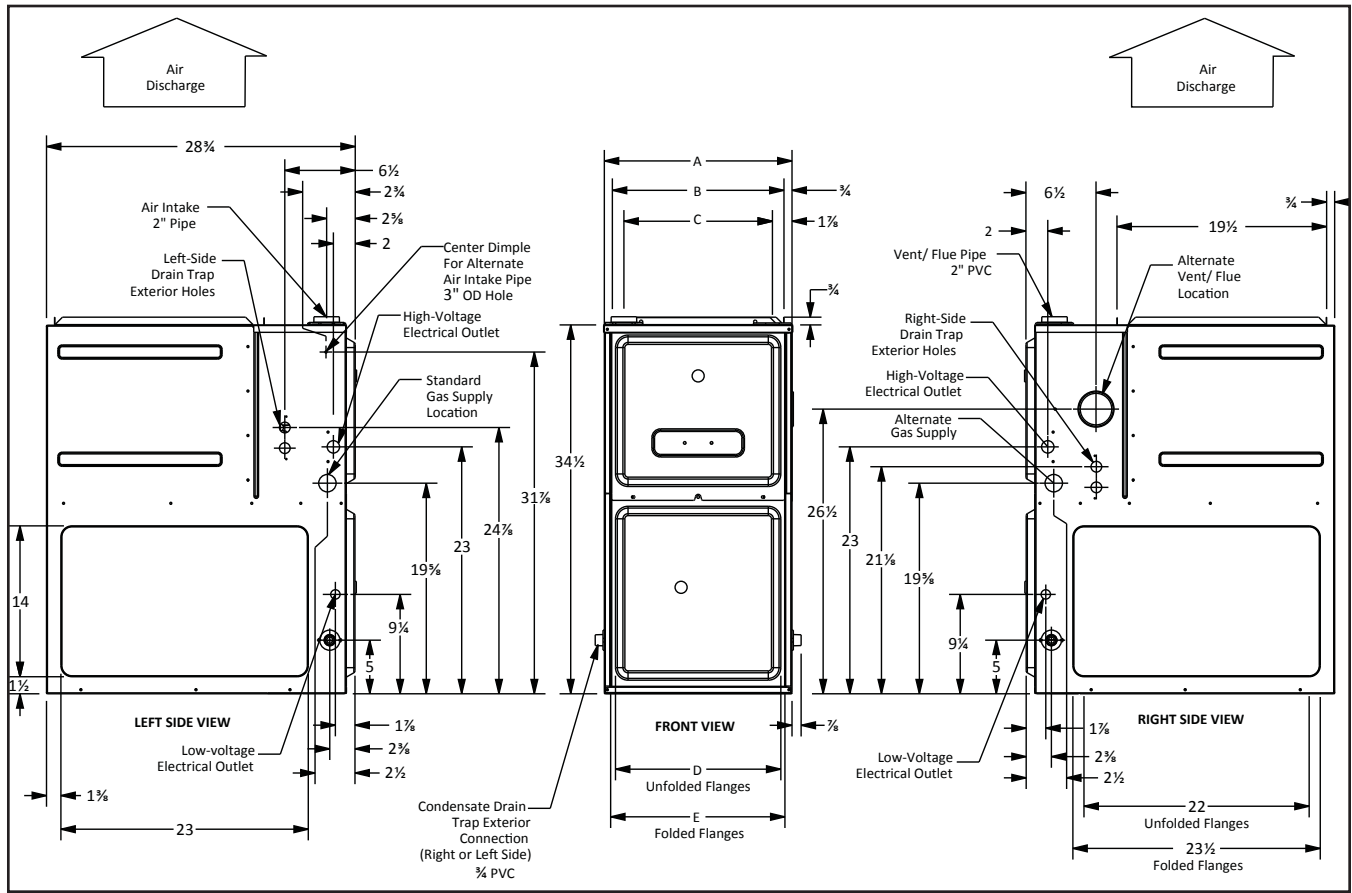
³ Installer must supply one or two PVC pipes: one for combustion air (optional) and one for the flue outlet (required). Vent pipe must be either 2" or 3" in diameter, depending upon furnace input, number of elbows, length of run and installation (1 or 2 pipes). The optional Combustion Air Pipe is dependent on installation/code requirements and must be 2" or 3" diameter PVC.

⁴ Minimum Circuit Ampacity = (1.25 x Circulator Blower Amps) + ID Blower amps. Wire size should be determined in accordance with National Electrical Codes. Extensive wire runs will require larger wire sizes.

⁵ Maximum Overcurrent Protection Device refers to maximum recommended fuse or circuit breaker size. May use fuses or HACR-type circuit breakers of the same size as noted.

NOTES

- All furnaces are manufactured for use on 115 VAC, 60 Hz, single-phase electrical supply.
- Gas Service Connection ½" FPT
- Important: Size fuses and wires properly and make electrical connections in accordance with the National Electrical Code and/or all existing local codes.
- For bottom return: Failure to unfold flanges may reduce airflow by up to 18%. This could result in performance and noise issues.
- For servicing or cleaning, a 24" front clearance is required. Unit connections (electrical, flue and drain) may necessitate greater clearances than the minimum clearances listed above. In all cases, accessibility clearance must take precedence over clearances from the enclosure where accessibility clearances are greater.



| MODEL | A | B | C | D | E |
|--------------|---------|---------|---------|---------|---------|
| GMES920403A* | 14" | 12 1/2" | 10 1/2" | 8 5/8" | 10 5/8" |
| GMES920603B* | 17 1/2" | 16" | 13 5/8" | 12 1/8" | 13 3/8" |
| GMES920803B* | 17 1/2" | 16" | 13 5/8" | 12 1/8" | 13 3/8" |
| GMES920804C* | 21" | 19 1/2" | 17 3/8" | 16" | 17 1/2" |
| GMES920805C* | 21" | 19 1/2" | 17 3/8" | 16" | 17 1/2" |
| GMES921004C* | 21" | 19 1/2" | 17 3/8" | 16" | 17 1/2" |
| GMES921005C* | 21" | 19 1/2" | 17 3/8" | 16" | 17 1/2" |
| GMES921205D* | 24 1/2" | 23" | 20 3/8" | 19 3/8" | 20 3/8" |

MINIMUM CLEARANCES TO COMBUSTIBLE MATERIALS

| POSITION | SIDES | REAR | FRONT | BOTTOM | FLUE | TOP |
|------------|-------|------|-------|--------|------|-----|
| Upflow | 0" | 0" | 3" | C | 0" | 1" |
| Horizontal | 6" | 0" | 3" | C | 0" | 6" |

C = If placed on combustible floor, the floor MUST be wood ONLY.

CFM & TEMPERATURE RISE VS. EXTERNAL STATIC PRESSURE

| MODEL | DIP SWITCHES S2-1, S2-2 | EXTERNAL STATIC PRESSURE, (INCHES WATER COLUMN) | | | | | | | | | | | | |
|--------------|-------------------------|---|------|------|------|------|------|------|------|------|------|------|------|------|
| | | 0.1 | | 0.2 | | 0.3 | | 0.4 | | 0.5 | | 0.6 | 0.7 | 0.8 |
| | | CFM | RISE | CFM | RISE | CFM | RISE | CFM | RISE | CFM | RISE | CFM | CFM | CFM |
| GMES92 0403A | OFF OFF | 628 | 54 | 582 | 59 | 530 | N/A | 478 | N/A | 428 | N/A | 370 | 319 | 282 |
| | ON OFF* | 806 | 42 | 762 | 45 | 719 | 47 | 676 | 50 | 633 | 54 | 594 | 551 | 506 |
| | ON ON** | 927 | 37 | 883 | 39 | 844 | 40 | 808 | 42 | 793 | 43 | 756 | 719 | 680 |
| | OFF ON** | 1111 | 31 | 1071 | 32 | 1033 | 33 | 1002 | 34 | 971 | 35 | 936 | 905 | 871 |
| GMES92 0603B | OFF OFF | 725 | N/A | 662 | N/A | 599 | N/A | 519 | N/A | 479 | N/A | 418 | 348 | 285 |
| | ON OFF* | 1068 | 48 | 1018 | 50 | 971 | 53 | 926 | 55 | 880 | 58 | 834 | 789 | 767 |
| | ON ON | 940 | 54 | 891 | 57 | 836 | 61 | 787 | 65 | 762 | N/A | 714 | 666 | 619 |
| | OFF ON** | 1139 | N/A | 1089 | N/A | 1040 | N/A | 998 | N/A | 958 | N/A | 911 | 870 | 829 |
| GMES92 0803B | OFF OFF | 737 | 92 | 669 | 102 | 609 | 112 | 550 | 124 | 490 | 139 | 425 | 361 | 303 |
| | ON OFF* | 1223 | 56 | 1171 | 58 | 1125 | 61 | 1081 | 63 | 1036 | 66 | 987 | 945 | 905 |
| | ON ON | 983 | 69 | 922 | 74 | 870 | 78 | 818 | 83 | 793 | 86 | 747 | 696 | 645 |
| | OFF ON | 1160 | 59 | 1112 | 61 | 1066 | 64 | 1020 | 67 | 977 | 70 | 933 | 889 | 849 |
| GMES92 0804C | OFF OFF | 795 | N/A | 721 | N/A | 646 | N/A | 580 | N/A | 507 | N/A | 399 | 326 | 275 |
| | ON OFF* | 1417 | 48 | 1378 | 49 | 1324 | 51 | 1284 | 53 | 1238 | 55 | 1191 | 1146 | 1092 |
| | ON ON** | 1587 | N/A | 1541 | N/A | 1496 | N/A | 1450 | N/A | 1411 | N/A | 1383 | 1339 | 1298 |
| | OFF ON** | 1794 | N/A | 1733 | N/A | 1694 | N/A | 1661 | N/A | 1623 | N/A | 1591 | 1544 | 1508 |
| GMES92 0805C | OFF OFF | 761 | N/A | 685 | N/A | 608 | N/A | 540 | N/A | 471 | N/A | 369 | 302 | 262 |
| | ON OFF* | 1439 | 47 | 1395 | 49 | 1364 | 50 | 1316 | 52 | 1270 | 54 | 1227 | 1181 | 1135 |
| | ON ON** | 1596 | N/A | 1552 | N/A | 1508 | N/A | 1467 | N/A | 1425 | N/A | 1405 | 1354 | 1314 |
| | OFF ON** | 1800 | N/A | 1757 | N/A | 1716 | N/A | 1680 | N/A | 1644 | N/A | 1605 | 1570 | 1528 |
| GMES92 1004C | OFF OFF | 814 | N/A | 741 | N/A | 661 | N/A | 592 | N/A | 523 | N/A | 451 | 377 | 306 |
| | ON OFF* | 1596 | 53 | 1539 | 55 | 1485 | 57 | 1443 | 59 | 1401 | 61 | 1372 | 1325 | 1280 |
| | ON ON | 1434 | 59 | 1369 | 62 | 1317 | 65 | 1273 | N/A | 1228 | N/A | 1178 | 1129 | 1081 |
| | OFF ON** | 1796 | N/A | 1744 | N/A | 1691 | N/A | 1648 | N/A | 1606 | N/A | 1568 | 1533 | 1493 |
| GMES92 1005C | OFF OFF | 804 | N/A | 750 | N/A | 671 | N/A | 598 | N/A | 539 | N/A | 471 | 390 | 322 |
| | ON OFF* | 1624 | 52 | 1560 | 55 | 1508 | 56 | 1465 | 58 | 1422 | 60 | 1389 | 1338 | 1295 |
| | ON ON | 1440 | 59 | 1390 | 61 | 1335 | 64 | 1288 | N/A | 1236 | N/A | 1186 | 1137 | 1090 |
| | OFF ON** | 1812 | N/A | 1755 | N/A | 1708 | N/A | 1662 | N/A | 1623 | N/A | 1585 | 1548 | 1507 |
| GMES92 1205D | OFF OFF | 1250 | N/A | 1003 | N/A | 868 | N/A | 788 | N/A | 669 | N/A | 572 | 488 | 406 |
| | ON OFF* | 2110 | 48 | 2058 | 50 | 2008 | 51 | 1957 | 52 | 1906 | 54 | 1852 | 1800 | 1750 |
| | ON ON | 1536 | N/A | 1462 | N/A | 1408 | N/A | 1335 | N/A | 1258 | N/A | 1185 | 1109 | 1026 |
| | OFF ON | 1884 | 54 | 1821 | 56 | 1757 | 58 | 1698 | 60 | 1628 | 63 | 1550 | 1492 | 1422 |

¹ at 0.5" ESP

Notes:

- CFM in chart is without filter(s). Filters do not ship with this furnace, but must be provided by the installer. If the furnace requires two return filters, this chart assumes both filters are installed.
- All furnaces ship as high-speed cooling and medium-speed heating. Installer must adjust blower cooling and heating speed as needed.
- For most jobs, about 400 CFM per ton when cooling is desirable.
- INSTALLATION IS TO BE ADJUSTED TO OBTAIN TEMPERATURE RISE WITHIN THE RANGE SPECIFIED ON THE RATING PLATE.
- This chart is for information only. For satisfactory operation, external static pressure must not exceed value shown on the rating plate.
- The dashed (---) areas indicate a temperature rise not recommended for this model.
- At higher altitudes, a properly derated unit will have approximately the same temperature rise at a particular CFM, while ESP at the CFM will be lower.

MINIMUM FILTER SIZES

| | GMES92 0403ANA | GMES92 0603BNA | GMES92 0803BNA | GMES92 0804CNA | GMES92 0805CNA | GMES92 1004CNA | GMES92 1005CNA | GMES92 1205DNA |
|--------------------------------------|--|------------------------------|----------------|----------------|--|------------------------------|--|----------------|
| Filter Size (in ²) (Qty) | (1) 16 x 25 (side) or (1) 14 x 25 (bottom) | (1) 16 x 25 (side or bottom) | | | (1) 20 x 25 (bottom) or (2) 16 x 25 (side) | (1) 16 x 25 (side or bottom) | (1) 20 x 25 (bottom) or (2) 16 x 25 (side) | |

Note: Other size filters of equal or greater dimensions may be used. Filters may also be centrally located.

CFM & TEMPERATURE RISE VS. EXTERNAL STATIC PRESSURE

| MODEL | DIP SWITCHES S2-3, S2-4 | EXTERNAL STATIC PRESSURE, (INCHES WATER COLUMN) | | | | | | | | | |
|--------------|-------------------------|---|------|------|------|------|------|------|------|------|------|
| | | 0.1 | 0.2 | 0.3 | 0.4 | 0.5 | 0.6 | 0.7 | 0.8 | 0.9 | 1 |
| | | CFM | CFM | CFM | CFM | CFM | CFM | CFM | CFM | CFM | CFM |
| GMES92 0403A | OFF OFF* | 628 | 582 | 530 | 478 | 428 | 370 | 319 | 282 | 239 | 201 |
| | ON OFF | 806 | 762 | 719 | 676 | 633 | 594 | 551 | 506 | 463 | 418 |
| | OFF ON | 1111 | 1071 | 1033 | 1002 | 971 | 936 | 905 | 871 | 839 | 807 |
| | ON ON | 1359 | 1322 | 1290 | 1258 | 1229 | 1203 | 1176 | 1148 | 1122 | 1095 |
| GMES92 0603B | OFF OFF* | 725 | 662 | 599 | 519 | 479 | 418 | 348 | 285 | 239 | 207 |
| | ON OFF | 1068 | 1018 | 971 | 926 | 880 | 834 | 789 | 767 | 725 | 679 |
| | OFF ON | 1139 | 1089 | 1040 | 998 | 958 | 911 | 870 | 829 | 806 | 771 |
| | ON ON | 1378 | 1337 | 1301 | 1264 | 1223 | 1188 | 1150 | 1113 | 1073 | 971 |
| GMES92 0803B | OFF OFF* | 737 | 669 | 609 | 550 | 490 | 425 | 361 | 303 | 251 | 208 |
| | ON OFF | 1223 | 1171 | 1125 | 1081 | 1036 | 987 | 945 | 905 | 859 | 838 |
| | OFF ON | 1160 | 1112 | 1066 | 1020 | 977 | 933 | 889 | 849 | 824 | 780 |
| | ON ON | 1431 | 1394 | 1358 | 1322 | 1281 | 1241 | 1204 | 1163 | 1131 | 1098 |
| GMES92 0804C | OFF OFF* | 795 | 721 | 646 | 580 | 507 | 399 | 326 | 275 | 235 | 207 |
| | ON OFF | 1417 | 1378 | 1324 | 1284 | 1238 | 1191 | 1146 | 1092 | 1055 | 1010 |
| | OFF ON | 1794 | 1733 | 1694 | 1661 | 1623 | 1591 | 1544 | 1508 | 1469 | 1426 |
| | ON ON | 1819 | 1771 | 1727 | 1689 | 1653 | 1615 | 1574 | 1538 | 1497 | 1465 |
| GMES92 0805C | OFF OFF* | 761 | 685 | 608 | 540 | 471 | 369 | 302 | 262 | 224 | 187 |
| | ON OFF | 1439 | 1395 | 1364 | 1316 | 1270 | 1227 | 1181 | 1135 | 1093 | 1051 |
| | OFF ON | 1800 | 1757 | 1716 | 1680 | 1644 | 1605 | 1570 | 1528 | 1488 | 1450 |
| | ON ON | 2186 | 2148 | 2113 | 2082 | 2016 | 2005 | 1981 | 1952 | 1936 | 1903 |
| GMES92 1004C | OFF OFF* | 814 | 741 | 661 | 592 | 523 | 451 | 377 | 306 | 272 | 215 |
| | ON OFF | 1596 | 1539 | 1485 | 1443 | 1401 | 1372 | 1325 | 1280 | 1241 | 1192 |
| | OFF ON | 1796 | 1744 | 1691 | 1648 | 1606 | 1568 | 1533 | 1493 | 1445 | 1409 |
| | ON ON | 1833 | 1772 | 1724 | 1677 | 1636 | 1601 | 1563 | 1521 | 1484 | 1441 |
| GMES92 1005C | OFF OFF* | 804 | 750 | 671 | 598 | 539 | 471 | 390 | 322 | 276 | 221 |
| | ON OFF | 1624 | 1560 | 1508 | 1465 | 1422 | 1389 | 1338 | 1295 | 1253 | 1211 |
| | OFF ON | 1812 | 1755 | 1708 | 1662 | 1623 | 1585 | 1548 | 1507 | 1466 | 1425 |
| | ON ON | 2223 | 2176 | 2127 | 2084 | 2046 | 2014 | 1993 | 1977 | 1948 | 1913 |
| GMES92 1205D | OFF OFF* | 1250 | 1003 | 868 | 788 | 669 | 572 | 488 | 406 | 330 | 236 |
| | ON OFF | 2110 | 2058 | 2008 | 1957 | 1906 | 1852 | 1800 | 1750 | 1697 | 1646 |
| | OFF ON | 1884 | 1821 | 1757 | 1698 | 1628 | 1550 | 1492 | 1422 | 1375 | 1305 |
| | ON ON | 2233 | 2177 | 2129 | 2085 | 2036 | 1981 | 1928 | 1881 | 1833 | 1783 |

¹ at 0.5" ESP

Notes:

- CFM in chart is without filter(s). Filters do not ship with this furnace, but must be provided by the installer. If the furnace requires two return filters, this chart assumes both filters are installed.
- All furnaces ship as high-speed cooling and medium-speed heating. Installer must adjust blower cooling and heating speed as needed.

CFM & TEMPERATURE RISE VS. EXTERNAL STATIC PRESSURE

| MODEL | DIP SWITCHES S1-1, S1-2, S1-3 | EXTERNAL STATIC PRESSURE, (INCHES WATER COLUMN) | | | | | | | | | |
|-----------------|-------------------------------------|---|------|------|------|------|------|------|------|------|------|
| | | 0.1 | 0.2 | 0.3 | 0.4 | 0.5 | 0.6 | 0.7 | 0.8 | 0.9 | 1 |
| | | CFM | CFM | CFM | CFM | CFM | CFM | CFM | CFM | CFM | CFM |
| GMES92 0403A | OFF OFF OFF | 628 | 582 | 530 | 478 | 428 | 370 | 319 | 282 | 239 | 201 |
| | OFF ON ON | 628 | 582 | 530 | 478 | 428 | 370 | 319 | 282 | 239 | 201 |
| | ON OFF ON | 628 | 582 | 530 | 478 | 428 | 370 | 319 | 282 | 239 | 201 |
| | ON ON ON | 628 | 582 | 530 | 478 | 428 | 370 | 319 | 282 | 239 | 201 |
| | ON OFF OFF | 806 | 762 | 719 | 676 | 633 | 594 | 551 | 506 | 463 | 418 |
| | ON ON OFF | 927 | 883 | 844 | 808 | 793 | 756 | 719 | 680 | 646 | 605 |
| | OFF ON OFF | 1111 | 1071 | 1033 | 1002 | 971 | 936 | 905 | 871 | 839 | 807 |
| | OFF OFF ON* | 1359 | 1322 | 1290 | 1258 | 1229 | 1203 | 1176 | 1148 | 1122 | 1095 |
| GMES92 0603B | OFF OFF OFF | 725 | 662 | 599 | 519 | 479 | 418 | 348 | 285 | 239 | 207 |
| | OFF ON ON | 725 | 662 | 599 | 519 | 479 | 418 | 348 | 285 | 239 | 207 |
| | ON OFF ON | 725 | 662 | 599 | 519 | 479 | 418 | 348 | 285 | 239 | 207 |
| | ON ON ON | 725 | 662 | 599 | 519 | 479 | 418 | 348 | 285 | 239 | 207 |
| | ON OFF OFF | 1068 | 1018 | 971 | 926 | 880 | 834 | 789 | 767 | 725 | 679 |
| | ON ON OFF | 940 | 891 | 836 | 787 | 762 | 714 | 666 | 619 | 570 | 520 |
| | OFF ON OFF | 1139 | 1089 | 1040 | 998 | 958 | 911 | 870 | 829 | 806 | 771 |
| | OFF OFF ON* | 1378 | 1337 | 1301 | 1264 | 1223 | 1188 | 1150 | 1113 | 1073 | 971 |
| GMES92 0803B | OFF OFF OFF | 737 | 669 | 609 | 550 | 490 | 425 | 361 | 303 | 251 | 208 |
| | OFF ON ON | 737 | 669 | 609 | 550 | 490 | 425 | 361 | 303 | 251 | 208 |
| | ON OFF ON | 737 | 669 | 609 | 550 | 490 | 425 | 361 | 303 | 251 | 208 |
| | ON ON ON | 737 | 669 | 609 | 550 | 490 | 425 | 361 | 303 | 251 | 208 |
| | ON OFF OFF | 1223 | 1171 | 1125 | 1081 | 1036 | 987 | 945 | 905 | 859 | 838 |
| | ON ON OFF | 983 | 922 | 870 | 818 | 793 | 747 | 696 | 645 | 598 | 546 |
| | OFF ON OFF | 1160 | 1112 | 1066 | 1020 | 977 | 933 | 889 | 849 | 824 | 780 |
| | OFF OFF ON* | 1431 | 1394 | 1358 | 1322 | 1281 | 1241 | 1204 | 1163 | 1131 | 1098 |
| GMES92 0804C | OFF OFF OFF | 795 | 721 | 646 | 580 | 507 | 399 | 326 | 275 | 235 | 207 |
| | OFF ON ON | 795 | 721 | 646 | 580 | 507 | 399 | 326 | 275 | 235 | 207 |
| | ON OFF ON | 795 | 721 | 646 | 580 | 507 | 399 | 326 | 275 | 235 | 207 |
| | ON ON ON | 795 | 721 | 646 | 580 | 507 | 399 | 326 | 275 | 235 | 207 |
| | ON OFF OFF | 1417 | 1378 | 1324 | 1284 | 1238 | 1191 | 1146 | 1092 | 1055 | 1010 |
| | ON ON OFF | 1587 | 1541 | 1496 | 1450 | 1411 | 1383 | 1339 | 1298 | 1261 | 1215 |
| | OFF ON OFF | 1794 | 1733 | 1694 | 1661 | 1623 | 1591 | 1544 | 1508 | 1469 | 1426 |
| | OFF OFF ON* | 1819 | 1771 | 1727 | 1689 | 1653 | 1615 | 1574 | 1538 | 1497 | 1465 |
| GMES92 0805C | OFF OFF OFF | 761 | 685 | 608 | 540 | 471 | 369 | 302 | 262 | 224 | 187 |
| | OFF ON ON | 761 | 685 | 608 | 540 | 471 | 369 | 302 | 262 | 224 | 187 |
| | ON OFF ON | 761 | 685 | 608 | 540 | 471 | 369 | 302 | 262 | 224 | 187 |
| | ON ON ON | 761 | 685 | 608 | 540 | 471 | 369 | 302 | 262 | 224 | 187 |
| | ON OFF OFF | 1439 | 1395 | 1364 | 1316 | 1270 | 1227 | 1181 | 1135 | 1093 | 1051 |
| | ON ON OFF | 1596 | 1552 | 1508 | 1467 | 1425 | 1405 | 1354 | 1314 | 1272 | 1237 |
| | OFF ON OFF | 1800 | 1757 | 1716 | 1680 | 1644 | 1605 | 1570 | 1528 | 1488 | 1450 |
| | OFF OFF ON* | 2186 | 2148 | 2113 | 2082 | 2016 | 2005 | 1981 | 1952 | 1936 | 1903 |

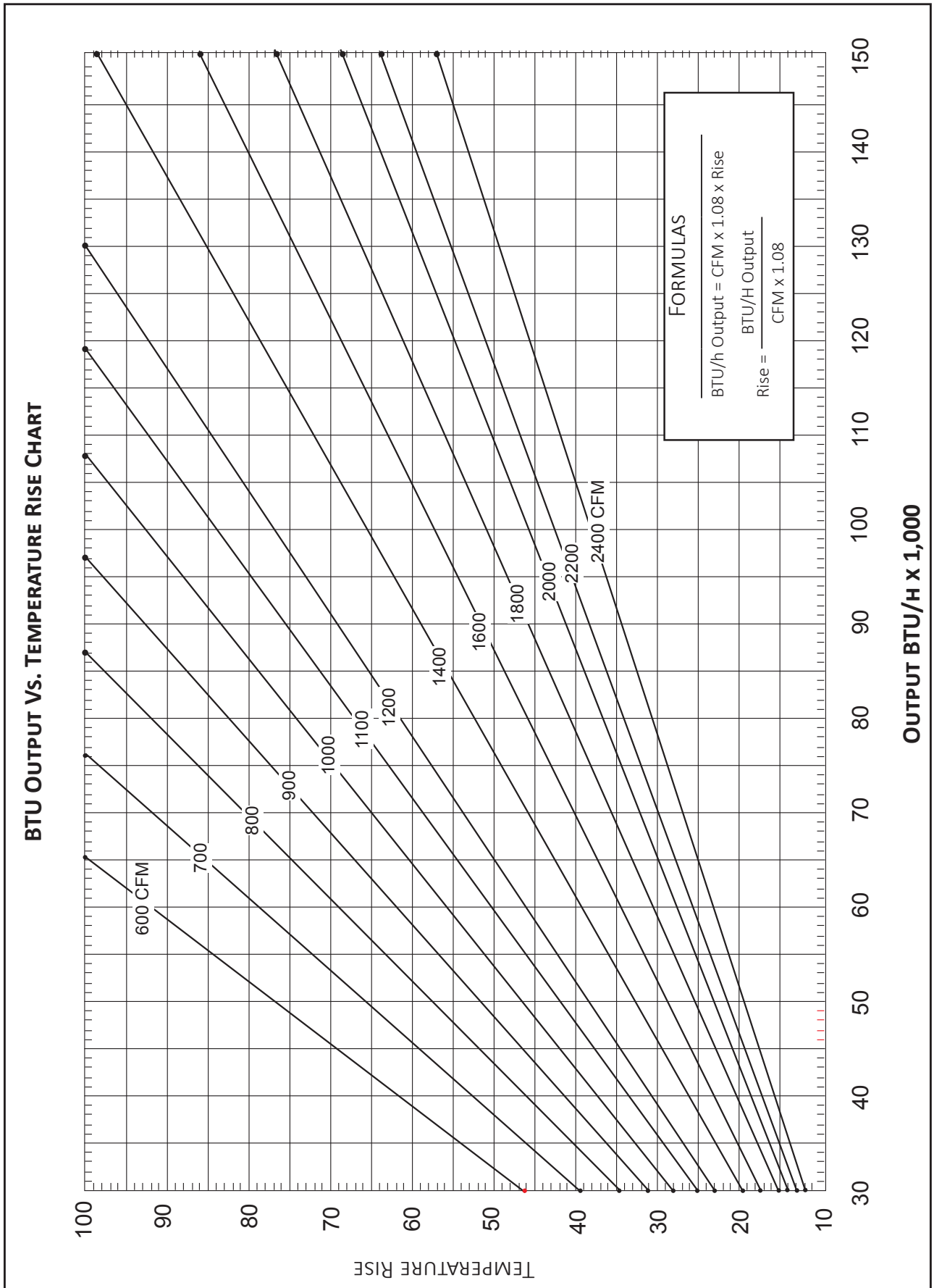
CFM & TEMPERATURE RISE VS. EXTERNAL STATIC PRESSURE

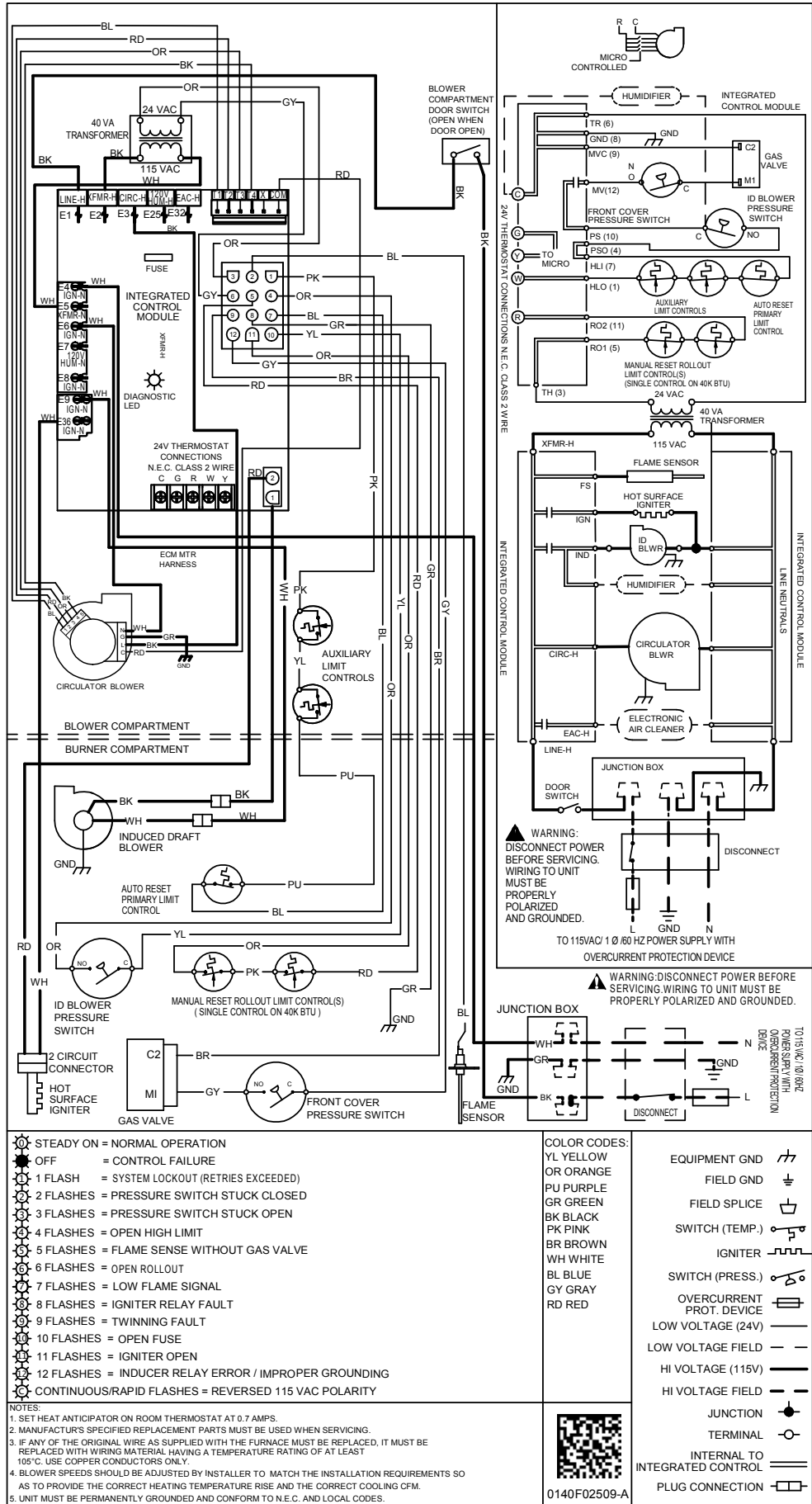
| MODEL | DIP SWITCHES S1-1, S1-2, S1-3 | EXTERNAL STATIC PRESSURE, (INCHES WATER COLUMN) | | | | | | | | | |
|-----------------|-------------------------------------|---|------|------|------|------|------|------|------|------|------|
| | | 0.1 | 0.2 | 0.3 | 0.4 | 0.5 | 0.6 | 0.7 | 0.8 | 0.9 | 1 |
| | | CFM | CFM | CFM | CFM | CFM | CFM | CFM | CFM | CFM | CFM |
| GMES92 1004C | OFF OFF OFF | 814 | 741 | 661 | 592 | 523 | 451 | 377 | 306 | 272 | 215 |
| | OFF ON ON | 814 | 741 | 661 | 592 | 523 | 451 | 377 | 306 | 272 | 215 |
| | ON OFF ON | 814 | 741 | 661 | 592 | 523 | 451 | 377 | 306 | 272 | 215 |
| | ON ON ON | 814 | 741 | 661 | 592 | 523 | 451 | 377 | 306 | 272 | 215 |
| | ON OFF OFF | 1596 | 1539 | 1485 | 1443 | 1401 | 1372 | 1325 | 1280 | 1241 | 1192 |
| | ON ON OFF | 1434 | 1369 | 1317 | 1273 | 1228 | 1178 | 1129 | 1081 | 1030 | 983 |
| | OFF ON OFF | 1796 | 1744 | 1691 | 1648 | 1606 | 1568 | 1533 | 1493 | 1445 | 1409 |
| | OFF OFF ON* | 1833 | 1772 | 1724 | 1677 | 1636 | 1601 | 1563 | 1521 | 1484 | 1441 |
| GMES92 1005C | OFF OFF OFF | 804 | 750 | 671 | 598 | 539 | 471 | 390 | 322 | 276 | 221 |
| | OFF ON ON | 804 | 750 | 671 | 598 | 539 | 471 | 390 | 322 | 276 | 221 |
| | ON OFF ON | 804 | 750 | 671 | 598 | 539 | 471 | 390 | 322 | 276 | 221 |
| | ON ON ON | 804 | 750 | 671 | 598 | 539 | 471 | 390 | 322 | 276 | 221 |
| | ON OFF OFF | 1624 | 1560 | 1508 | 1465 | 1422 | 1389 | 1338 | 1295 | 1253 | 1211 |
| | ON ON OFF | 1440 | 1390 | 1335 | 1288 | 1236 | 1186 | 1137 | 1090 | 1042 | 999 |
| | OFF ON OFF | 1812 | 1755 | 1708 | 1662 | 1623 | 1585 | 1548 | 1507 | 1466 | 1425 |
| | OFF OFF ON* | 2223 | 2176 | 2127 | 2084 | 2046 | 2014 | 1993 | 1977 | 1948 | 1913 |
| GMES92 1205D | OFF OFF OFF | 1250 | 1003 | 868 | 788 | 669 | 572 | 488 | 406 | 330 | 236 |
| | OFF ON ON | 1250 | 1003 | 868 | 788 | 669 | 572 | 488 | 406 | 330 | 236 |
| | ON OFF ON | 1250 | 1003 | 868 | 788 | 669 | 572 | 488 | 406 | 330 | 236 |
| | ON ON ON | 1250 | 1003 | 868 | 788 | 669 | 572 | 488 | 406 | 330 | 236 |
| | ON OFF OFF | 2110 | 2058 | 2008 | 1957 | 1906 | 1852 | 1800 | 1750 | 1697 | 1646 |
| | ON ON OFF | 1536 | 1462 | 1408 | 1335 | 1258 | 1185 | 1109 | 1026 | 941 | 853 |
| | OFF ON OFF | 1884 | 1821 | 1757 | 1698 | 1628 | 1550 | 1492 | 1422 | 1375 | 1305 |
| | OFF OFF ON* | 2233 | 2177 | 2129 | 2085 | 2036 | 1981 | 1928 | 1881 | 1833 | 1783 |

¹ at 0.5" ESP

Notes:

- CFM in chart is without filter(s). Filters do not ship with this furnace, but must be provided by the installer. If the furnace requires two return filters, this chart assumes both filters are installed.
- All furnaces ship as high-speed cooling and medium-speed heating. Installer must adjust blower cooling and heating speed as needed.
- For most jobs, about 400 CFM per ton when cooling is desirable.
- INSTALLATION IS TO BE ADJUSTED TO OBTAIN TEMPERATURE RISE WITHIN THE RANGE SPECIFIED ON THE RATING PLATE.
- This chart is for information only. For satisfactory operation, external static pressure must not exceed value shown on the rating plate.
- The dashed (----) areas indicate a temperature rise not recommended for this model.
- At higher altitudes, a properly derated unit will have approximately the same temperature rise at a particular CFM, while ESP at the CFM will be lower





- STEADY ON = NORMAL OPERATION
 - OFF = CONTROL FAILURE
 - 1 FLASH = SYSTEM LOCKOUT (RETRIES EXCEEDED)
 - 2 FLASHES = PRESSURE SWITCH STUCK CLOSED
 - 3 FLASHES = PRESSURE SWITCH STUCK OPEN
 - 4 FLASHES = OPEN HIGH LIMIT
 - 5 FLASHES = FLAME SENSE WITHOUT GAS VALVE
 - 6 FLASHES = OPEN ROLLOUT
 - 7 FLASHES = LOW FLAME SIGNAL
 - 8 FLASHES = IGNITER RELAY FAULT
 - 9 FLASHES = TWINNING FAULT
 - 10 FLASHES = OPEN FUSE
 - 11 FLASHES = IGNITER OPEN
 - 12 FLASHES = INDUCER RELAY ERROR / IMPROPER GROUNDING
 - CONTINUOUS/RAPID FLASHES = REVERSED 115 VAC POLARITY
- NOTES:
- SET HEAT ANTICIPATOR ON ROOM THERMOSTAT AT 0.7 AMPS.
 - MANUFACTURER'S SPECIFIED REPLACEMENT PARTS MUST BE USED WHEN SERVICING.
 - IF ANY OF THE ORIGINAL WIRE AS SUPPLIED WITH THE FURNACE MUST BE REPLACED, IT MUST BE REPLACED WITH WIRING MATERIAL HAVING A TEMPERATURE RATING OF AT LEAST 105°C. USE COPPER CONDUCTORS ONLY.
 - BLOWER SPEEDS SHOULD BE ADJUSTED BY INSTALLER TO MATCH THE INSTALLATION REQUIREMENTS SO AS TO PROVIDE THE CORRECT HEATING TEMPERATURE RISE AND THE CORRECT COOLING CFM.
 - UNIT MUST BE PERMANENTLY GROUNDED AND CONFORM TO N.E.C. AND LOCAL CODES.

COLOR CODES:
 YL YELLOW
 OR ORANGE
 PU PURPLE
 GR GREEN
 BK BLACK
 PK PINK
 BR BROWN
 WH WHITE
 BL BLUE
 GY GRAY
 RD RED

- EQUIPMENT GND
- FIELD GND
- FIELD SPLICE
- SWITCH (TEMP.)
- IGNITER
- SWITCH (PRESS.)
- OVERCURRENT PROT. DEVICE
- LOW VOLTAGE (24V)
- LOW VOLTAGE FIELD
- HI VOLTAGE (115V)
- HI VOLTAGE FIELD
- JUNCTION
- TERMINAL
- INTERNAL TO INTEGRATED CONTROL
- PLUG CONNECTION

High Voltage: Disconnect all power before servicing or installing this unit. Multiple power sources may be present. Failure to do so may cause property damage, personal injury, or death.

WARNING

⚡

Wiring is subject to change. Always refer to the wiring diagram on the unit for the most up-to-date wiring.

| MODEL | DESCRIPTION | GMES92 0403ANA | GMES92 0603BNA | GMES92 0803BNA | GMES92 0804CNA | GMES92 0805CNA | GMES92 1004CNA | GMES92 1005CNA | GMES92 1205DNA |
|-------------|---|-------------------|-------------------|-------------------|-------------------|-------------------|-------------------|-------------------|-------------------|
| 72950 | Concentric Vent Kit (2") | √ | √ | √ | √ | √ | √ | √ | — |
| 72951 | Concentric Vent Kit (3") | √ | √ | √ | √ | √ | √ | √ | √ |
| RF000142 | Drain Kit Horizontal Left Vertical Flue | √ | √ | √ | √ | √ | √ | √ | √ |
| EFR02 | External Filter Rack with 16"x25" Permanent Filter | √ | √ | √ | √ | — | √ | — | — |
| 0170K00000S | Flush Mount Vent Kit - 3" or 2" | √ | √ | √ | √ | √ | √ | √ | √ |
| 0170K00001S | Flush Mount Vent Kit - 2" | √ | √ | √ | √ | √ | √ | √ | — |
| AFE18-60A | Fossil Fuel (Dual Fuel) Kit | √ | √ | √ | √ | √ | √ | √ | √ |
| HASFK | High-Altitude Natural Gas Kit | TBD | HASFK-4 | HASFK-4 | HASFK-4 | HASFK-4 | HASFK-4 | HASFK-4 | HASFK-4 |
| HASFK | High-Altitude LP Gas Kit | TBD | HASFK-4 | HASFK-5 | HASFK-4 | HASFK-4 | HASFK-4 | HASFK-5 | HASFK-4 |
| O270F05404 | Horizontal Drain Tubing Kit | √ | √ | √ | √ | √ | √ | √ | √ |
| LPLP03 | Low LP Gas Pressure Switch | √ | √ | √ | √ | √ | √ | √ | √ |
| LPM-07 | LP Conversion Kits | √ | √ | √ | √ | √ | √ | √ | √ |

