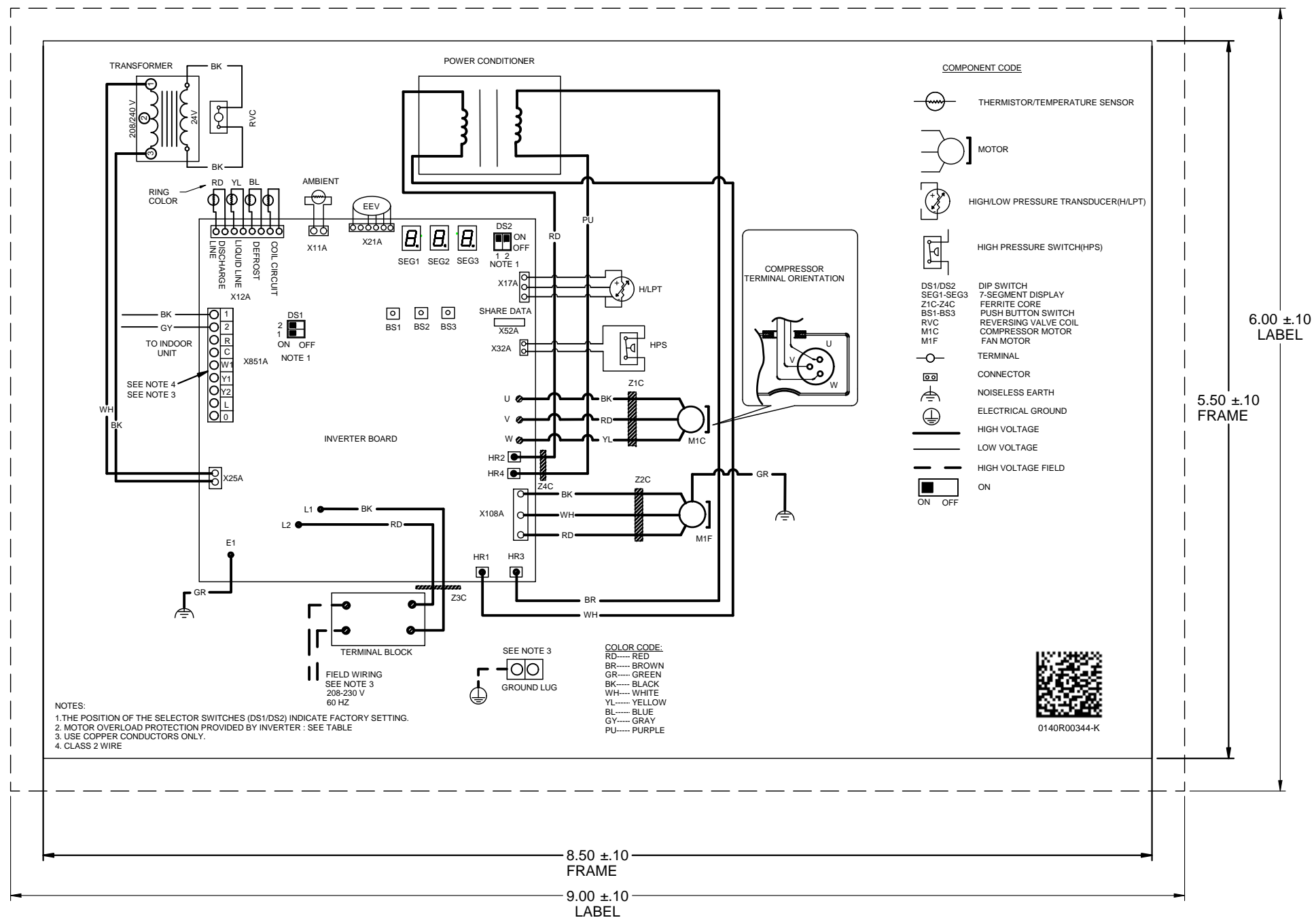


ECN	REV	ZONE	DESCRIPTION	CHK	DR	DATE
1409408	E	TAB	EC13006-1 WAS EC13006-3	SK	IS	08-29-14
1511222	F	TAB	ADDED AMANA MODELS UPDATED DRAWING FORMAT	SK	MFL	09-28-15
1714193	G	ALL	UPDATED FORMAT & NOTES TO REFLECT CURRENT STANDARDS B6 ALIGNED TEXT VERTICALLY B3 REMOVED "SEE NOTE 3" CALLOUT A9 REMOVED NOTE 1,2,3 & ADDED NOTE 4 D8 ADDED CALLOUT "SEE NOTE 3"	SK	HCL-BB	06-22-17
1919133	H	ALL	UPDATED SHEET FORMAT B4 0140R00344-H WAS 0140R00344-G B5 ADDED MODEL GVZC200241 E4,B9 ADDED .25 TYP	SK	RS	10-24-19
2020124	J		1. INVERTER MODEL 3P357336-4 (2T) WAS EC13006-1 (2T) (C6) 2.ON/OFF COMPONENT CODE ADDED (C5) 3. REMOVED .25 TYP (E4,B9)	SK	HCL-VN MFL	03-30-20
2020673	K		1. UPDATED DRAWING FORMAT 2. REMOVED TABLE (C5)		MFL RS	07-14-20



- NOTES:**
1. REMOVED.
 2. REMOVED.
 3. REMOVED.
 4. WIRING DIAGRAM LABELS MUST COMPLY WITH GOODMAN SPECIFICATION S4900149 - WIRING DIAGRAM LABEL SPECIFICATION.

SPECIAL CHARACTERISTICS: (REFER MSP 822-01 FOR DETAILS)

⊕ = CRITICAL CHARACTERISTIC REQUIRES AN INITIAL CPK OF 1.33 AND USE OF STATISTICAL PROCESS CONTROL.

⊕ = SIGNIFICANT CHARACTERISTIC REQUIRES AN INITIAL CPK OF 1.00 AND USE OF STATISTICAL PROCESS CONTROL. INABILITY TO MEET THE REQUIRED INITIAL CPK VALUE WILL REQUIRE 100% INSPECTION.

COMPONENTS AND MATERIALS SPECIFIED HEREIN WILL ALSO CONFORM TO THE APPLICABLE SECTION OF GOODMAN MSP 860-01 WORKMANSHIP STANDARD.

CONFIDENTIAL PROPERTY OF GOODMAN MANUFACTURING COMPANY, L.P. OR ITS AFFILIATES NOT TO BE DISCLOSED TO OTHERS, COPIED, OR USED FOR ANY PURPOSE EXCEPT AS AUTHORIZED IN WRITING. MUST BE RETURNED UPON DEMAND, ON COMPLETION OF ORDER, OR OTHER PURPOSE FOR WHICH IT WAS LENT.

GOODMAN MANUFACTURING COMPANY, L.P.

DRAWING TO BE INTERPRETED IN ACCORDANCE WITH ASME Y14.100

DIMENSIONS ARE IN INCHES UNLESS OTHERWISE NOTED

LABEL, WIRING DIAGRAM

TOLERANCES UNLESS OTHERWISE NOTED
 ANGLES ± 1.5°
 .X: ± .1
 .XX: ± .03
 .XXX: ± .015
 HOLE Ø: ± .005
 TUBE CUT LG: ± .063

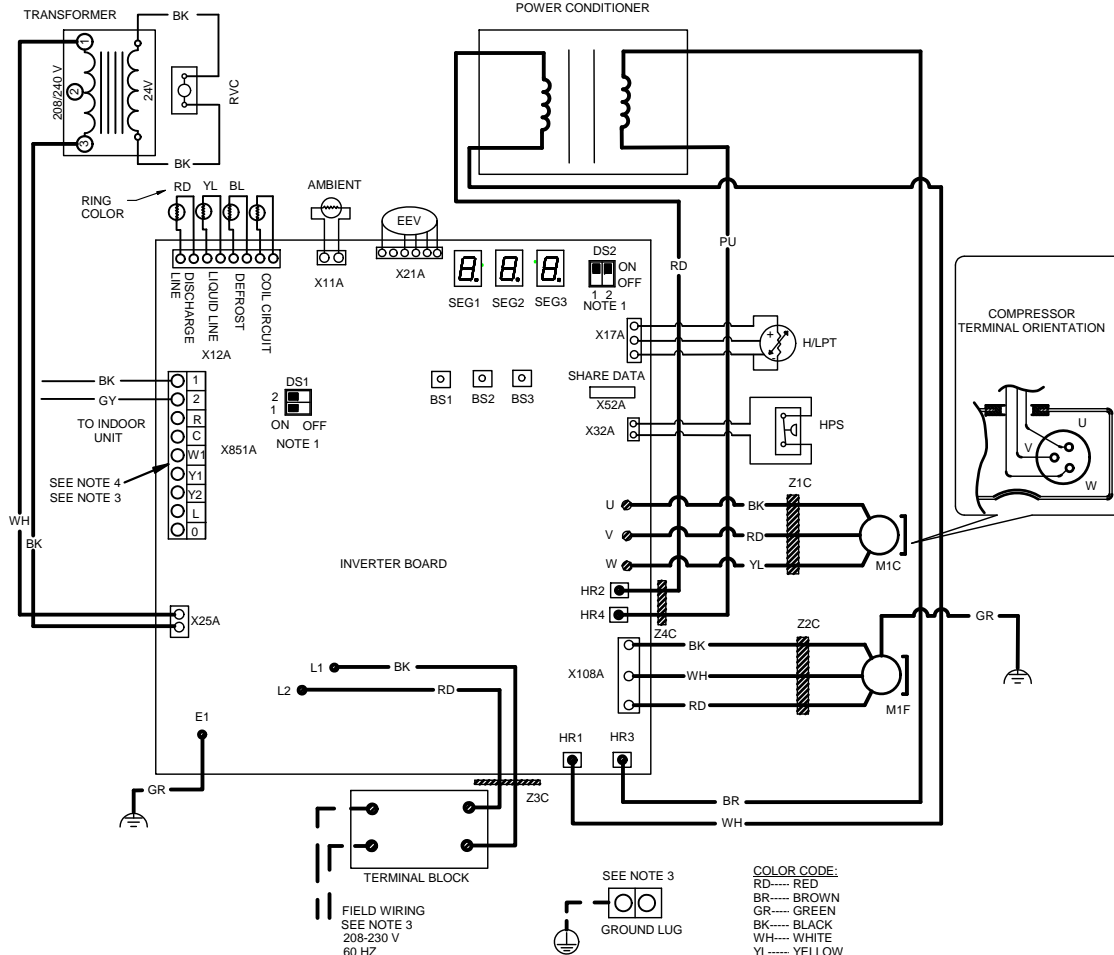
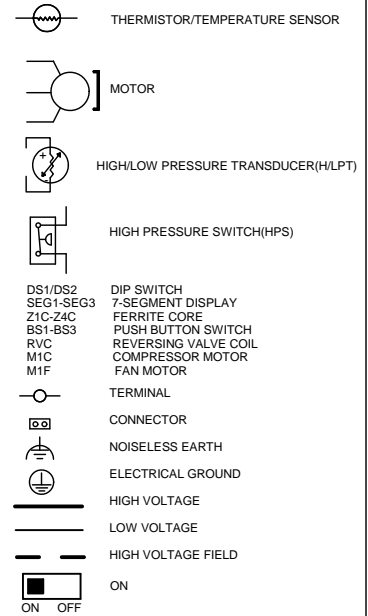
DWN BY: IS
 ENG: RM
 DO NOT SCALE DRAWING

CHK BY: SK
 DATE: 02-05-14
 SHT 1 OF 2

0140R00344

REV K

COMPONENT CODE



- NOTES:**
1. THE POSITION OF THE SELECTOR SWITCHES (DS1/DS2) INDICATE FACTORY SETTING.
 2. MOTOR OVERLOAD PROTECTION PROVIDED BY INVERTER : SEE TABLE
 3. USE COPPER CONDUCTORS ONLY.
 4. CLASS 2 WIRE

COLOR CODE:
 RD----- RED
 BR----- BROWN
 GR----- GREEN
 BK----- BLACK
 WH----- WHITE
 YL----- YELLOW
 BL----- BLUE
 GY----- GRAY
 PU----- PURPLE



0140R00344-K