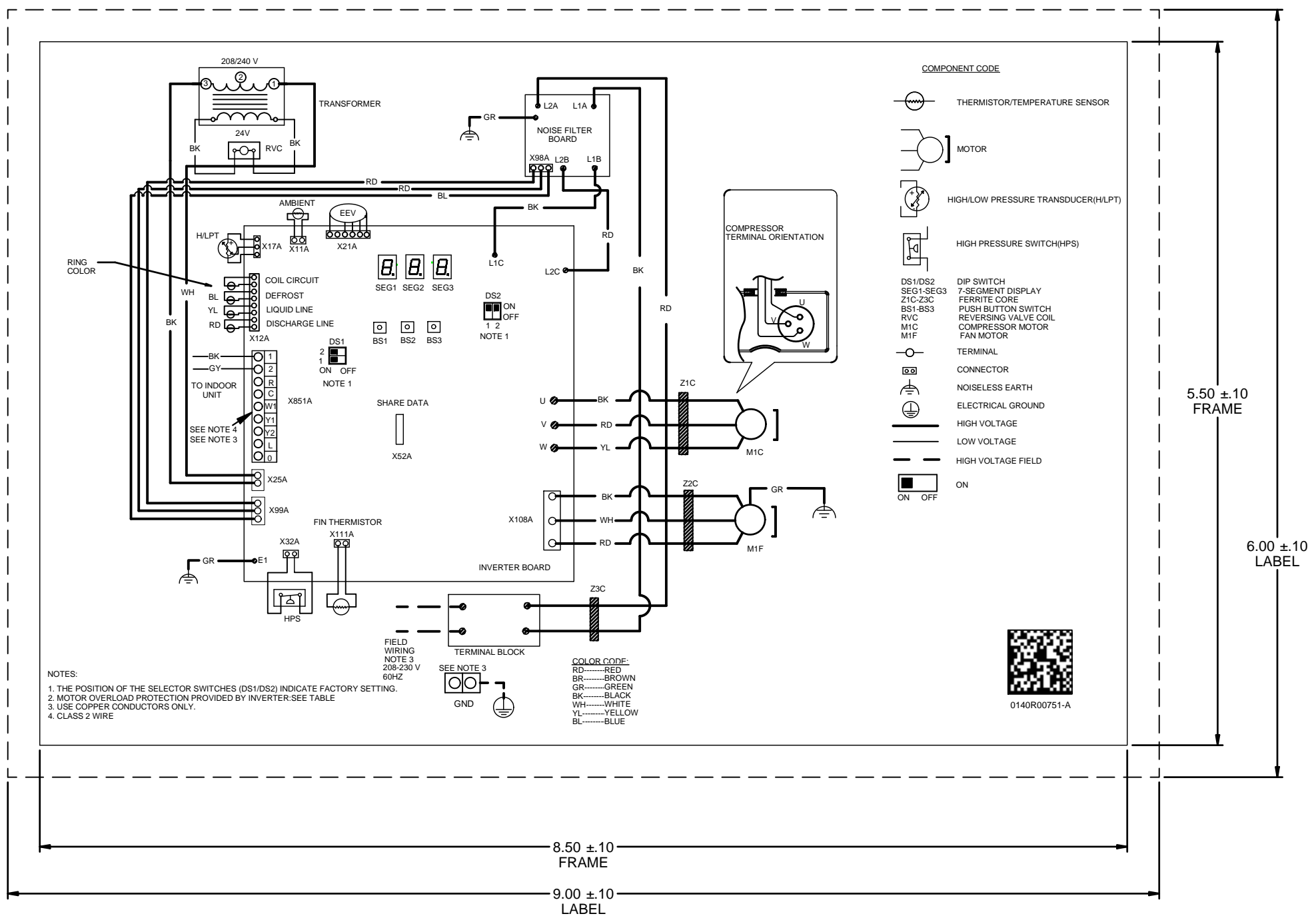


ECN	REV	ZONE	DESCRIPTION	CHK	DR	DATE
303187-303188	1		INITIAL RELEASE		MFL	08-06-20



- COMPONENT CODE**
- THERMISTOR/TEMPERATURE SENSOR
 - MOTOR
 - HIGH/LOW PRESSURE TRANSDUCER(HLPT)
 - HIGH PRESSURE SWITCH(HPS)
 - DS1/DS2 DIP SWITCH
 - SEG1-SEG3 7-SEGMENT DISPLAY
 - Z1C-Z3C FERRITE CORE
 - BS1-BS3 PUSH BUTTON SWITCH
 - RVC REVERSING VALVE COIL
 - M1C COMPRESSOR MOTOR
 - M1F FAN MOTOR
 - TERMINAL
 - CONNECTOR
 - ⊕ NOISELESS EARTH
 - ⊖ ELECTRICAL GROUND
 - HIGH VOLTAGE
 - LOW VOLTAGE
 - HIGH VOLTAGE FIELD
 - ON
 - OFF

- NOTES:**
1. THE POSITION OF THE SELECTOR SWITCHES (DS1/DS2) INDICATE FACTORY SETTING.
 2. MOTOR OVERLOAD PROTECTION PROVIDED BY INVERTER; SEE TABLE
 3. USE COPPER CONDUCTORS ONLY.
 4. CLASS 2 WIRE

- COLOR CODE:**
- RD-----RED
 - BR-----BROWN
 - GR-----GREEN
 - BK-----BLACK
 - WH-----WHITE
 - YL-----YELLOW
 - BL-----BLUE

GOODMAN MANUFACTURING COMPANY, L.P.

LABEL, WIRING DIAGRAM

DRAWING TO BE INTERPRETED IN ACCORDANCE WITH ASME Y14.100

DIMENSIONS ARE IN INCHES UNLESS OTHERWISE NOTED

TOLERANCES UNLESS OTHERWISE NOTED
 ANGLES ± 1.5°
 .X: ± .1
 .XX: ± .03
 .XXX: ± .015
 HOLE Ø: ± .005
 TUBE CUT LG: ± .063

DWN BY: MFL ENG: HH DO NOT SCALE DRAWING
 CHK BY: SK DATE: 08-06-20 SHT 1 OF 2

0140R00751

REV 1

NOTES:

1. WIRING DIAGRAM LABELS MUST COMPLY WITH GOODMAN SPECIFICATION S4900149 - WIRING DIAGRAM LABEL SPECIFICATION.

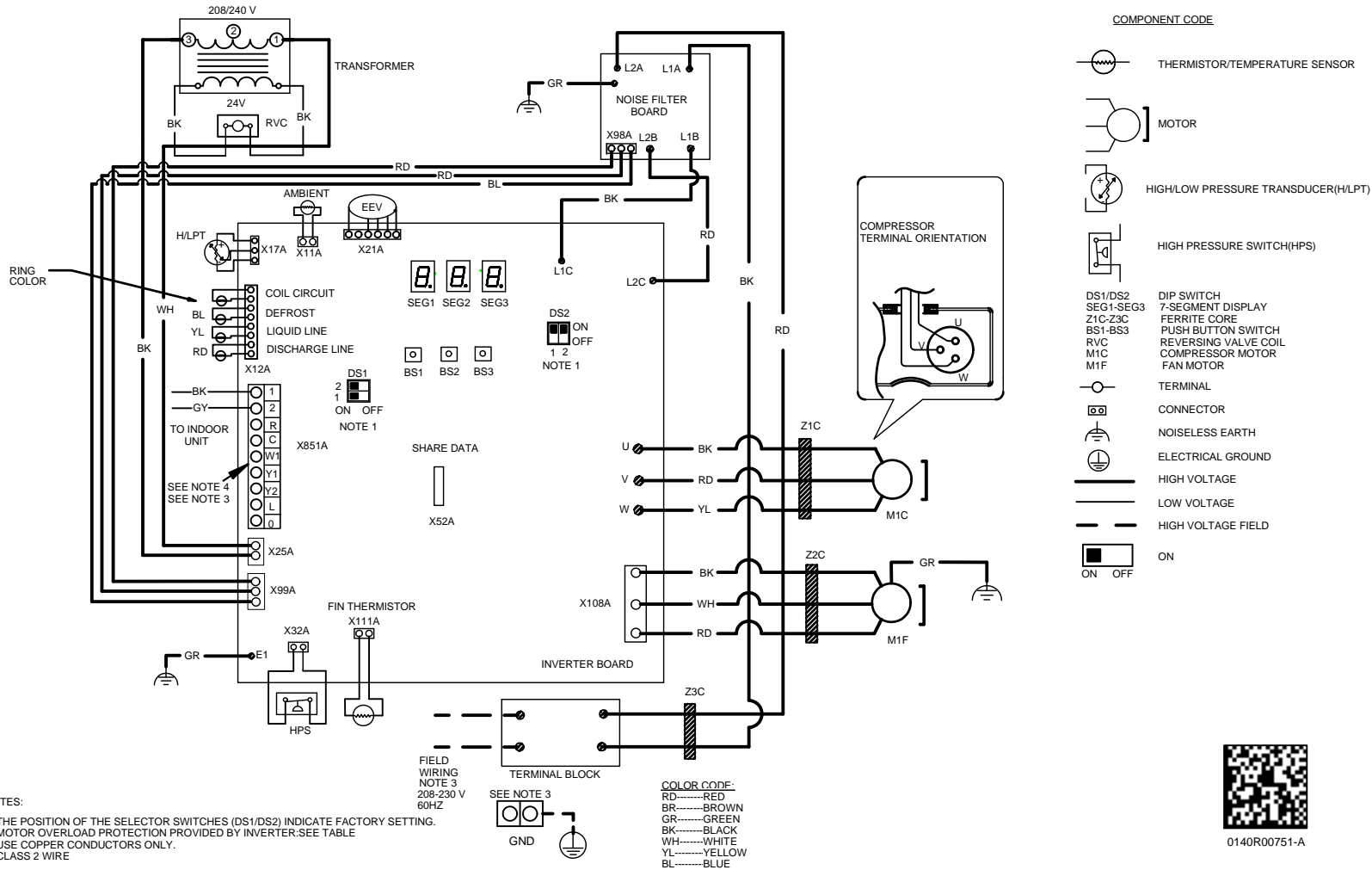
SPECIAL CHARACTERISTICS: (REFER MSP 822-01 FOR DETAILS)

⊕ = CRITICAL CHARACTERISTIC REQUIRES AN INITIAL CPK OF 1.33 AND USE OF STATISTICAL PROCESS CONTROL.

⊖ = SIGNIFICANT CHARACTERISTIC REQUIRES AN INITIAL CPK OF 1.00 AND USE OF STATISTICAL PROCESS CONTROL. INABILITY TO MEET THE REQUIRED INITIAL CPK VALUE WILL REQUIRE 100% INSPECTION.

COMPONENTS AND MATERIALS SPECIFIED HEREIN WILL ALSO CONFORM TO THE APPLICABLE SECTION OF GOODMAN MSP 860-01 WORKMANSHIP STANDARD.

CONFIDENTIAL PROPERTY OF GOODMAN MANUFACTURING COMPANY, L.P. OR ITS AFFILIATES NOT TO BE DISCLOSED TO OTHERS, COPIED, OR USED FOR ANY PURPOSE EXCEPT AS AUTHORIZED IN WRITING. MUST BE RETURNED UPON DEMAND, ON COMPLETION OF ORDER, OR OTHER PURPOSE FOR WHICH IT WAS LENT.



0140R00751-A